

787-807 DOHENY DRIVE
NORTHVILLE TWP, MICHIGAN

INDUSTRIAL FOR SALE OR LEASE
24,380-44,480 Square Feet Available

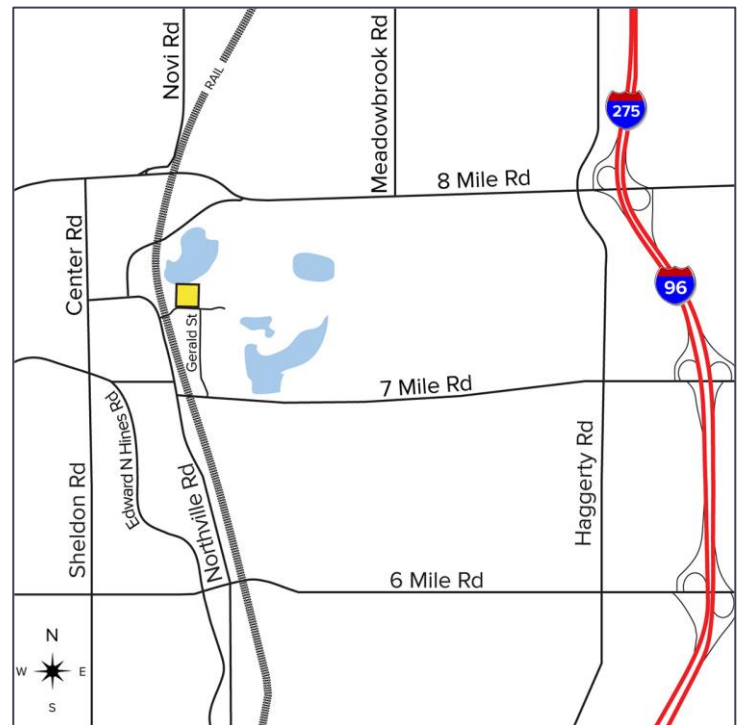


**SIGNATURE
ASSOCIATES**
KNOW SIGNATURE | KNOW RESULTS



PROPERTY FEATURES

- Total of 44,480 square feet
- 24,380 square feet available with 5,000 square feet of office
- 16' - 26' clear height
- (4) 12x14, 12x16 grade level doors
- (1) 20-ton, 13.2' under crane
- Zoned Consumer Industrial
- 1.99 acres
- Mezzanine and site fencing
- 44 parking spaces total
- 1200 amps, 480 volts, 3-phase power with air lines
- East unit leased to 2/1/24 with one option to renew for 36 or 60 months
- Lease Rate: \$5.95/sq. ft. NNN
- Sale Price: \$2,600,000 (\$58.45/sq. ft.)



For more information, please contact:

STEVE GORDON

(248) 948 0101

sgordon@signatureassociates.com

DAVE MILLER

(248) 948 4183

dmiller@signatureassociates.com

SIGNATURE ASSOCIATES

One Towne Square, Suite 1200

Southfield, MI 48076

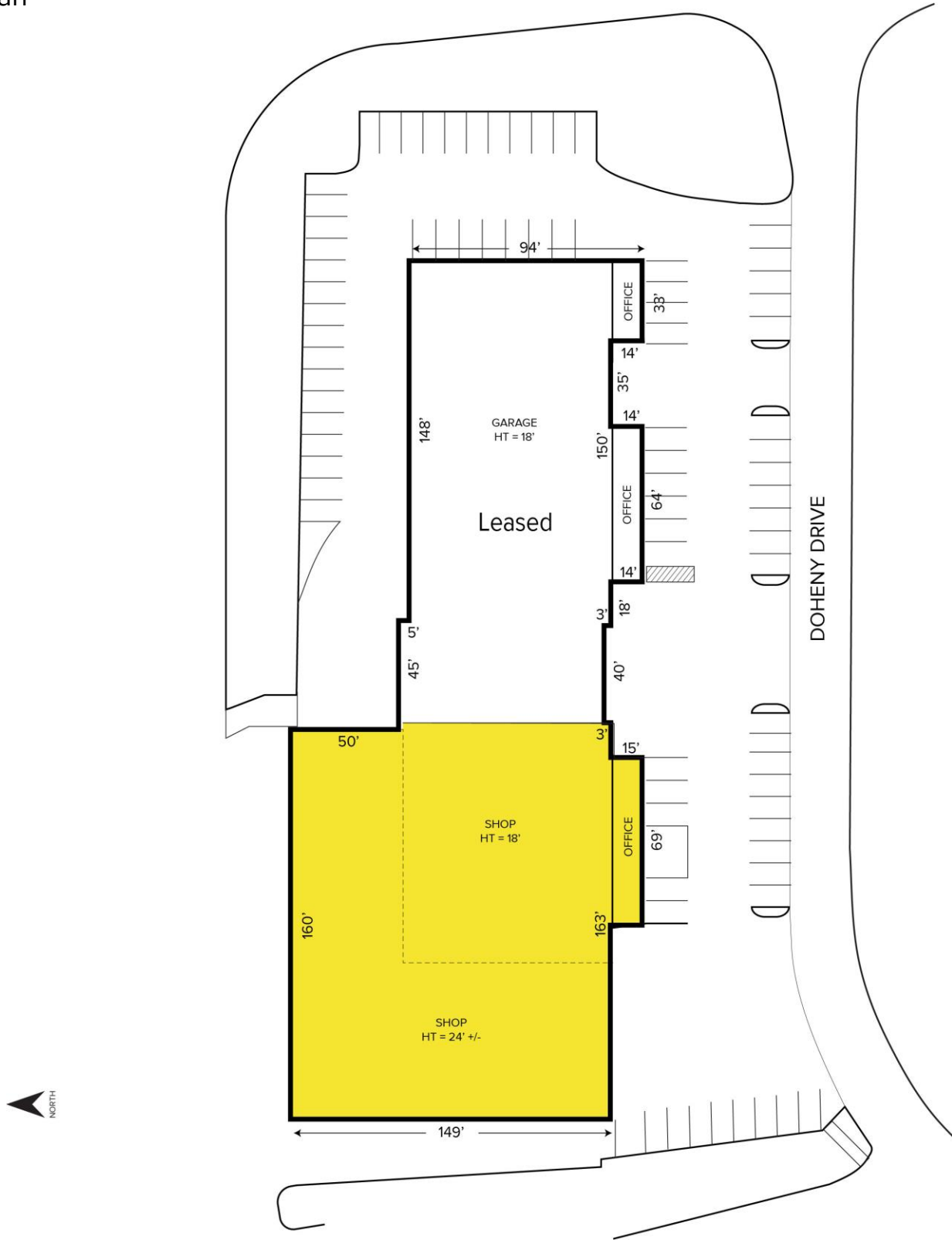
www.signatureassociates.com

787-807 Doheny Drive – Northville Twp, Michigan

Industrial For Sale or Lease

24,380-44,480
Square Feet
AVAILABLE

Site Plan



For more information, please contact:

STEVE GORDON
(248) 948 0101
sgordon@signatureassociates.com

DAVE MILLER
(248) 948 4183
dmiller@signatureassociates.com

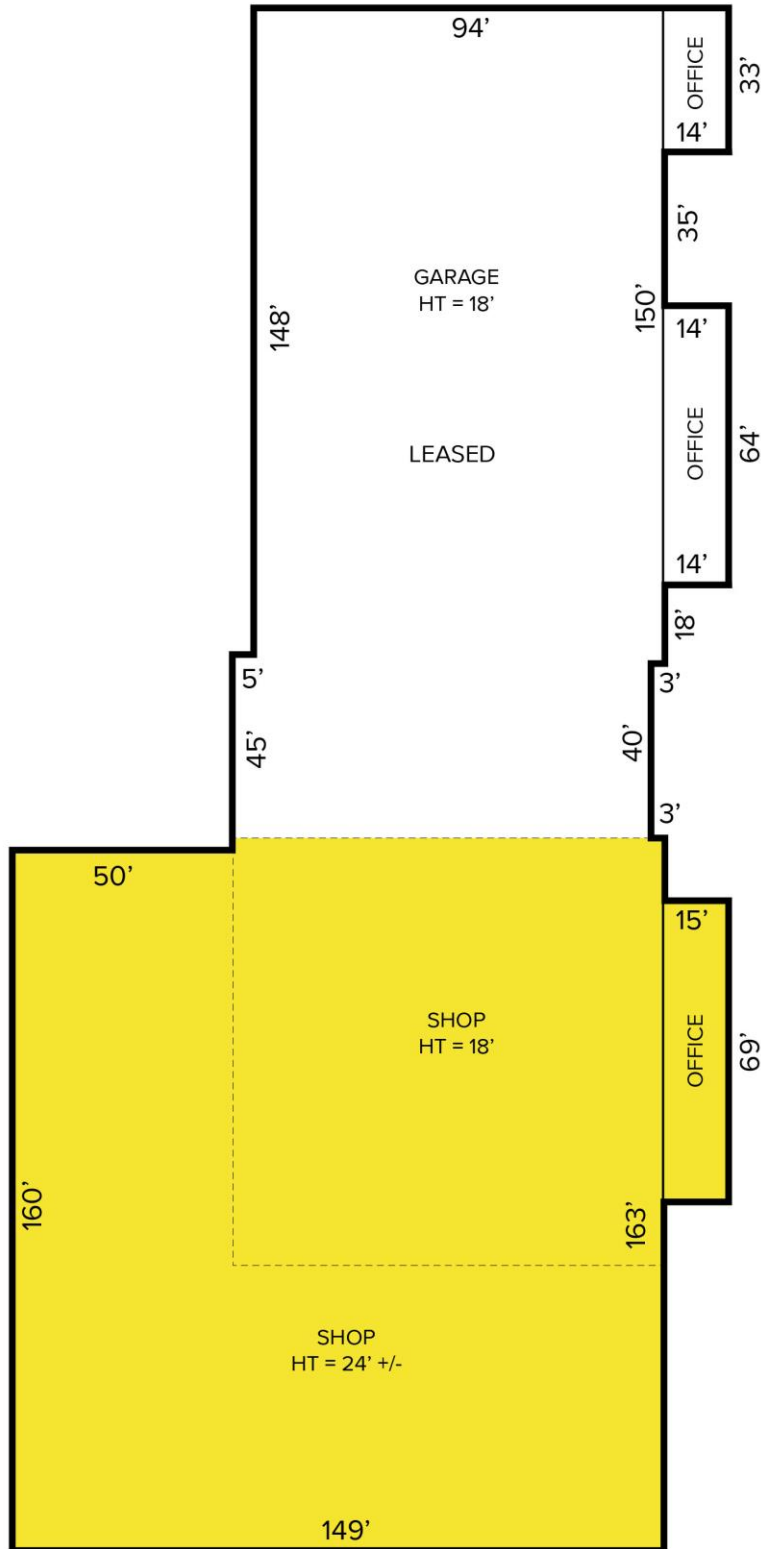
SIGNATURE ASSOCIATES
One Towne Square, Suite 1200
Southfield, MI 48076
www.signatureassociates.com

787-807 Doheny Drive – Northville Twp, Michigan

Industrial For Sale or Lease

24,380-44,480
Square Feet
AVAILABLE

Site Plan



For more information, please contact:

STEVE GORDON

(248) 948 0101

sgordon@signatureassociates.com

DAVE MILLER

(248) 948 4183

dmiller@signatureassociates.com

SIGNATURE ASSOCIATES

One Towne Square, Suite 1200

Southfield, MI 48076

www.signatureassociates.com

787-807 Doheny Drive – Northville Twp, Michigan

Industrial For Sale or Lease

24,380-44,480
Square Feet
AVAILABLE

Aerial Views



For more information, please contact:

STEVE GORDON

(248) 948 0101

sgordon@signatureassociates.com

DAVE MILLER

(248) 948 4183

dmiller@signatureassociates.com

SIGNATURE ASSOCIATES

One Towne Square, Suite 1200

Southfield, MI 48076

www.signatureassociates.com