

For Lease

5% SUMMER BONUS ON ALL DEALS SIGNED BY LABOR DAY



GLOBAL BUSINESS PARK A

8006 Cameron Road
Austin, Texas 78754

PROPERTY OVERVIEW

Space Available	Suite C – 4,500 SF
Rate	Negotiable
Operating Expenses	\$3.51 PSF Year EST.

Building features:

- Front Loading
- 24' Clear Height
- 40% Office; 60% Warehouse
- Sprinklered
- Available Now



FOR MORE INFORMATION

Ace Schlameus
512.225.2709

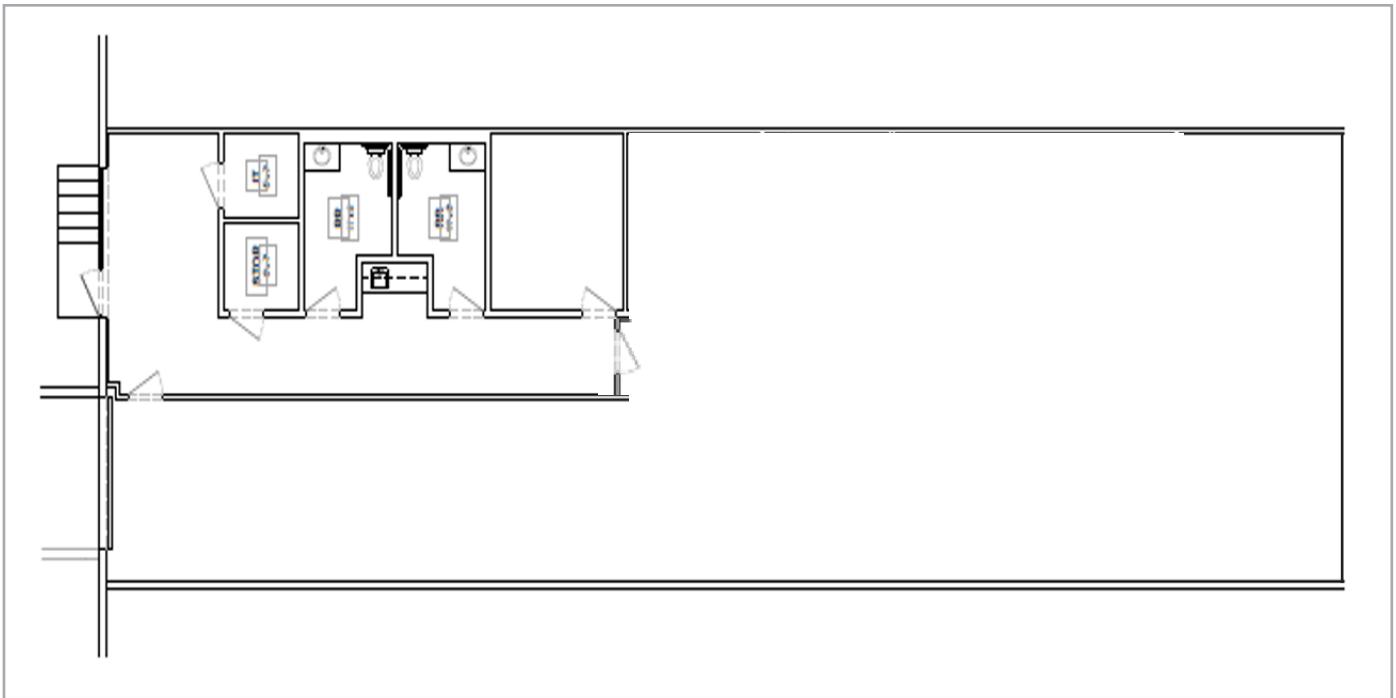
Ace.Schlameus@am.jll.com

Kyle McCulloch
512.225.2713

Kyle.McCulloch@am.jll.com

Dalfen
INDUSTRIAL

SUITE C | 4,500 SF
GLOBAL BUSINESS PARK A



 FOR MORE INFORMATION
Ace Schlameus 512.225.2709
Ace.Schlameus@am.jll.com

Kyle McCulloch 512.225.2713
Kyle.McCulloch@am.jll.com


INDUSTRIAL