

COMMERCIAL LAND FOR SALE

1036 SPRENKLE RD, SPRING GROVE, PA 17362 PROFILE #3765 COSTAR #15037260



OFFERING SUMMARY

Sale Price:	\$1,150,000
Lot Size:	10.73 Acres
Zoning:	Commercial
Price / SF:	\$2.46
APN:	33-000-GF-0062-C0
County:	York County
Township:	Jackson Township

PROPERTY OVERVIEW

10.73 acres of commercial land available for sale in Jackson Township, York County, PA. Excellent location in close proximity to Spring Forge Shopping Center & Spring Grove High School. Flexible zoning permits a wide variety of uses including office, warehouse, retail, hotels, car washes, banks and more.

PROPERTY HIGHLIGHTS

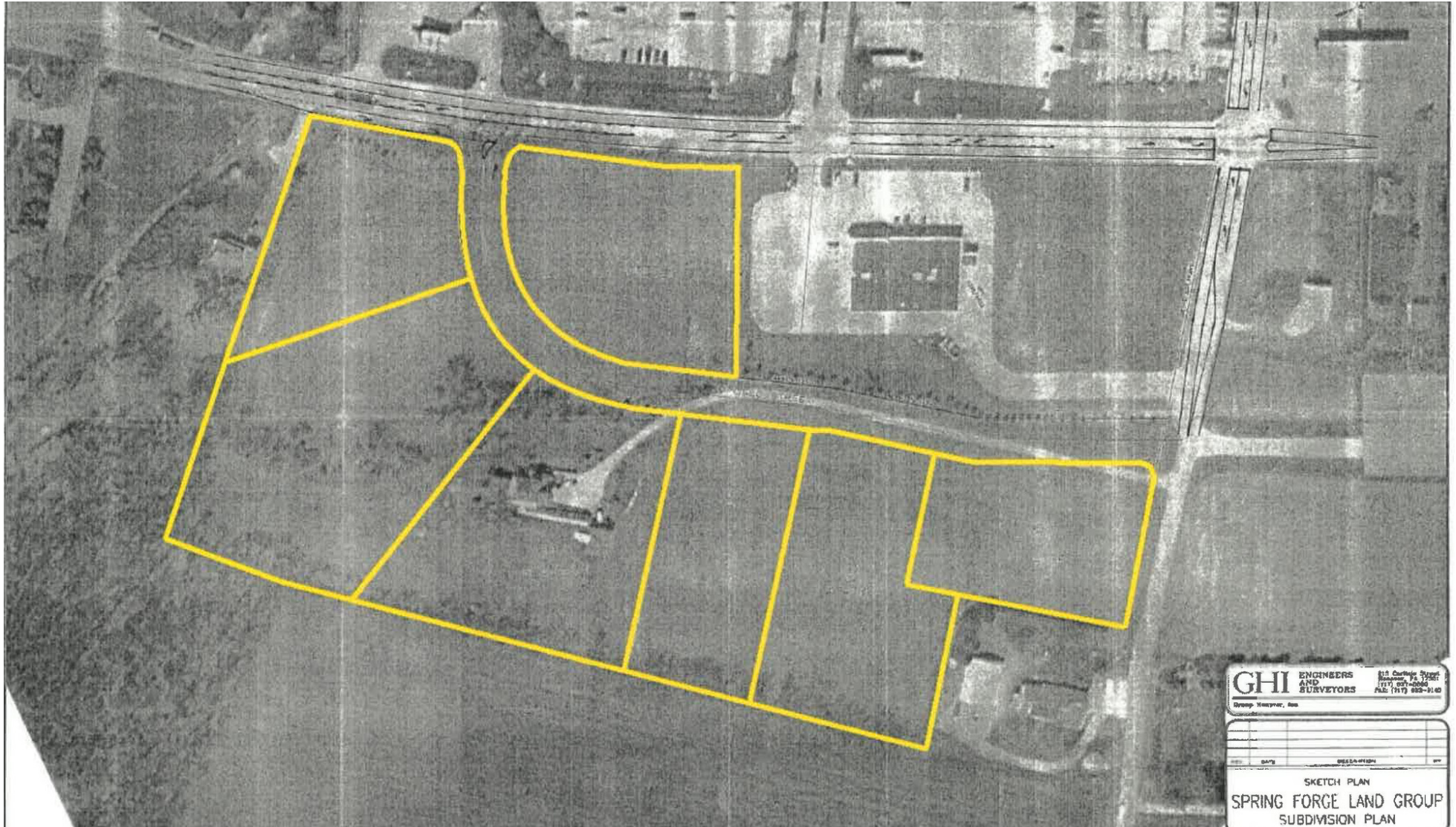
- 10.73 Acres for Sale
- Zoned Commercial
- Jackson Township address
- Water: Well
- Sewer: Septic
- Taxes: \$7,013.62

THOMAS T. POSAVEC, SIOR
Senior Vice President
717.731.1990 X3007
tposavec@landmarkcr.com

ROY H. BRENNER
Vice President Corporate Services Group
717.731.1990 X3016
rbrenner@landmarkcr.com

COMMERCIAL LAND FOR SALE

1036 SPRENKLE RD, SPRING GROVE, PA 17362



THOMAS T. POSAVEC, SIOR
Senior Vice President
717.731.1990 X3007
tposavec@landmarkcr.com

ROY H. BRENNER
Vice President Corporate Services Group
717.731.1990 X3016
rbrenner@landmarkcr.com

COMMERCIAL LAND FOR SALE

1036 SPRENKLE RD, SPRING GROVE, PA 17362



THOMAS T. POSAVEC, SIOR
Senior Vice President
717.731.1990 X3007
tposavec@landmarkcr.com

ROY H. BRENNER
Vice President Corporate Services Group
717.731.1990 X3016
rbrenner@landmarkcr.com

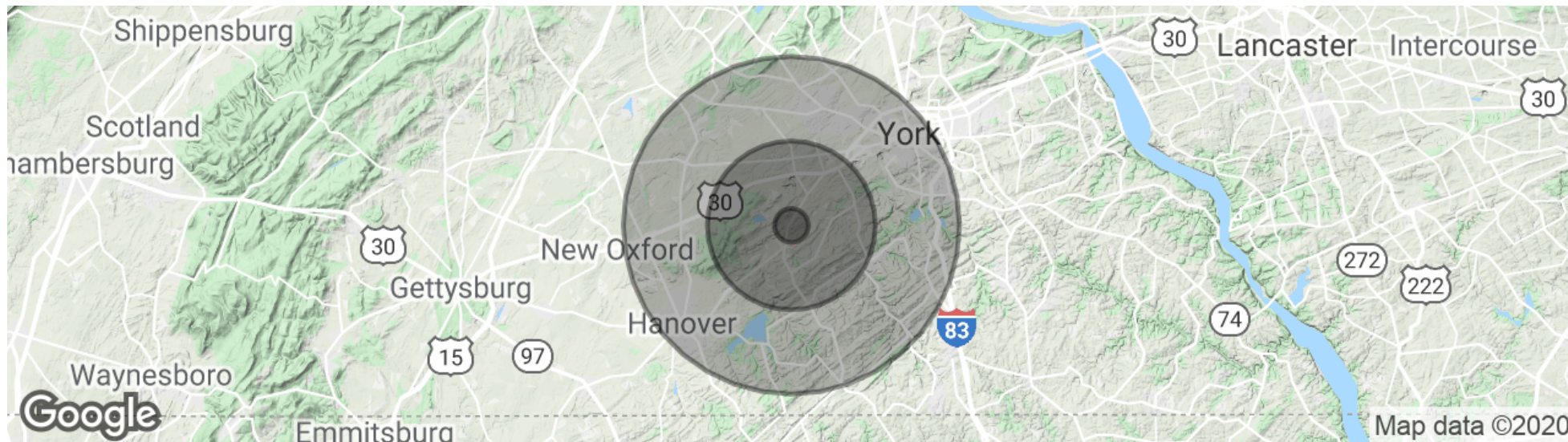


THOMAS T. POSAVEC, SIOR
Senior Vice President
717.731.1990 X3007
tposavec@landmarkcr.com

ROY H. BRENNER
Vice President Corporate Services Group
717.731.1990 X3016
rbrenner@landmarkcr.com

COMMERCIAL LAND FOR SALE

1036 SPRENKLE RD, SPRING GROVE, PA 17362



POPULATION

	1 MILE	5 MILES	10 MILES
Total population	1,957	25,520	160,373
Median age	38.1	40.0	40.3
Median age (Male)	35.5	39.5	39.7
Median age (Female)	40.3	40.5	41.2

HOUSEHOLDS & INCOME

	1 MILE	5 MILES	10 MILES
Total households	755	9,631	62,976
# of persons per HH	2.6	2.6	2.5
Average HH income	\$64,367	\$68,715	\$66,516
Average house value	\$160,321	\$155,687	\$190,019

* Demographic data derived from 2010 US Census

THOMAS T. POSAVEC, SIOR
Senior Vice President
717.731.1990 X3007
tposavec@landmarkcr.com

ROY H. BRENNER
Vice President Corporate Services Group
717.731.1990 X3016
rbrenner@landmarkcr.com