

+/- 1.35 Ac.—Hwy Business at Busy Crossroad.

EquityCP.com



PRICED TO SELL—\$250,000

1.35 Acres, part zoned Hwy Business, adjacent to one of the busiest rural interchanges in Iredell County...Kyles Crossroads, the intersection of Old Mountain Road, and Buffalo Shoals Road. Old Mountain is a connector road between I-77 and I-40 and heavily travelled. Just a few miles northwest of rapidly growing Troutman and Lake Norman. Great location for a free stranding retail, or service related business. 145' Frontage, 250' depth.

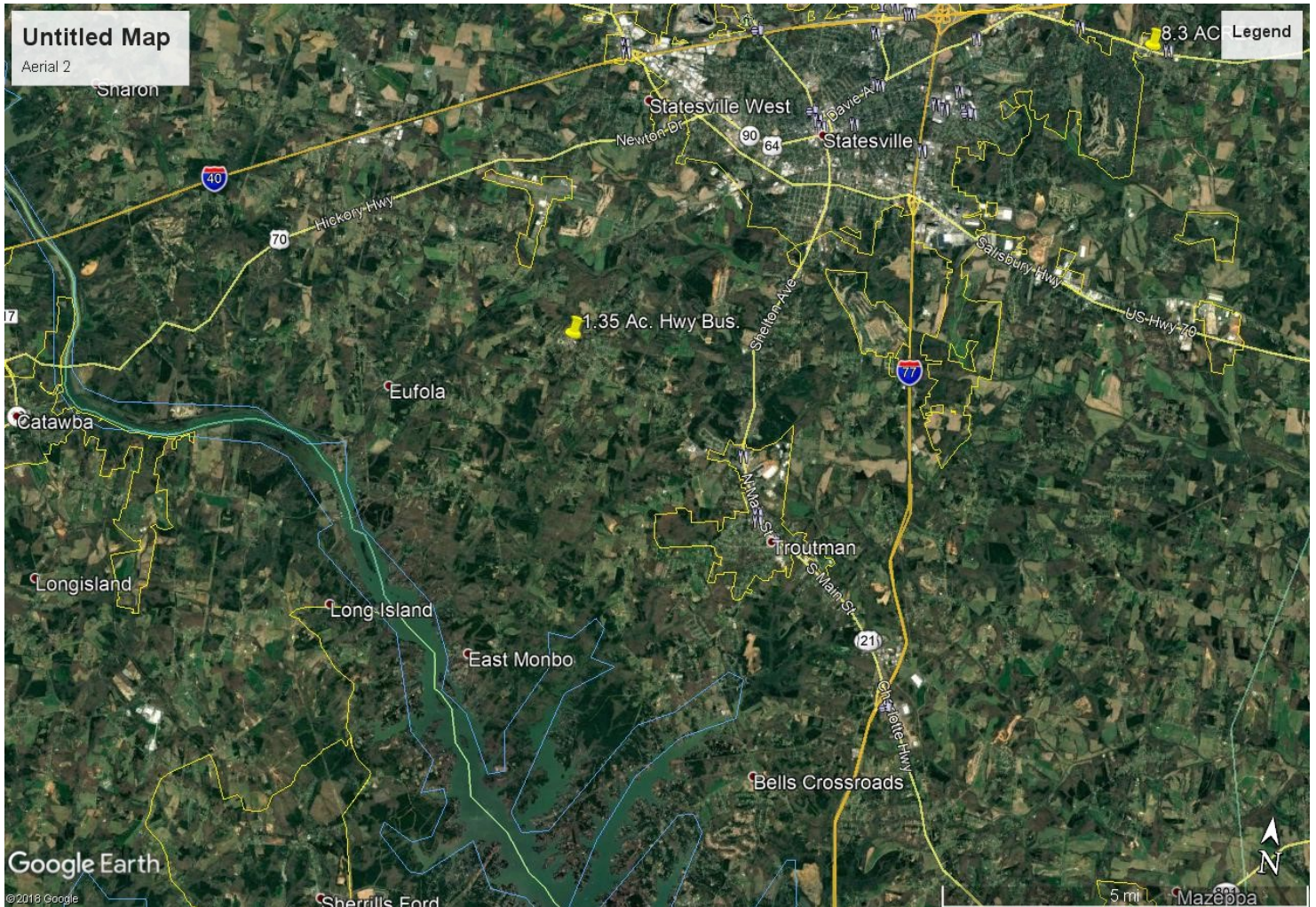
Frank Harmon 704-677-5320

E C P Equity Commercial Properties

114 Morlake Dr.
Suite 104
Mooresville, NC

Office 704-799-9202
EquityCP.com

Strategic Location Northwest of Rapidly Growing Troutman and Lake Norman, NC, between I-77 and I-40



Ideal for Free Standing Retail or Service Operation