

Developed Commercial Sites

Cobb Parkway at Kennesaw Due West Road | Kennesaw, Georgia 30152 | Cobb County



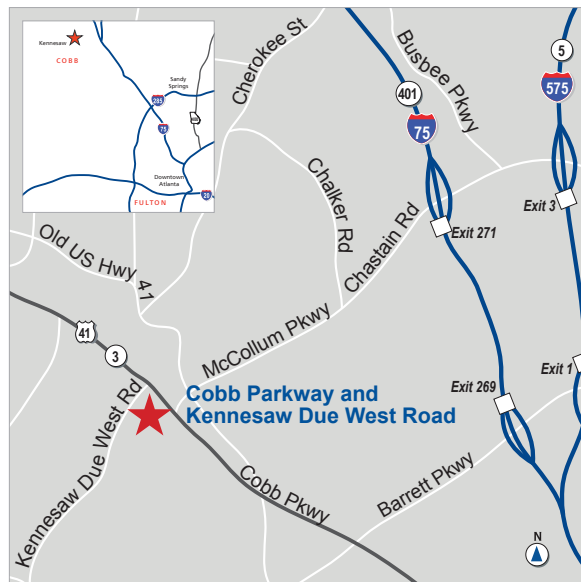
COMMERCIAL SITES FOR SALE

LAND AVAILABLE

- Parcel A - SOLD (Culver's / Dunkin Donuts)
- Parcel B - 1.1 acres (\$600,000)
- Parcel C - 1.28 acres (\$400,000)

HIGHLIGHTS

- Signalized traffic light at corner
 - Daily traffic count is 54,500±
 - Graded sites with utilities
 - Zoned CRC: Community Retail Commercial
 - Part of 27-acre, master-planned development
 - Adjacent to Servis 1st Bank branch
 - Demographics (2018):
- | | 1 mile | 3 miles | 5 miles |
|-------------------|----------|----------|-----------|
| Population | 6,457 | 72,103 | 168,079 |
| Households | 12,386 | 25,993 | 61,794 |
| Average HH Income | \$85,229 | \$98,165 | \$102,808 |



Ackerman & Co.

LARRY WOOD
770.913.3902
lwood@ackermanco.net

PIONEER
LAND GROUP

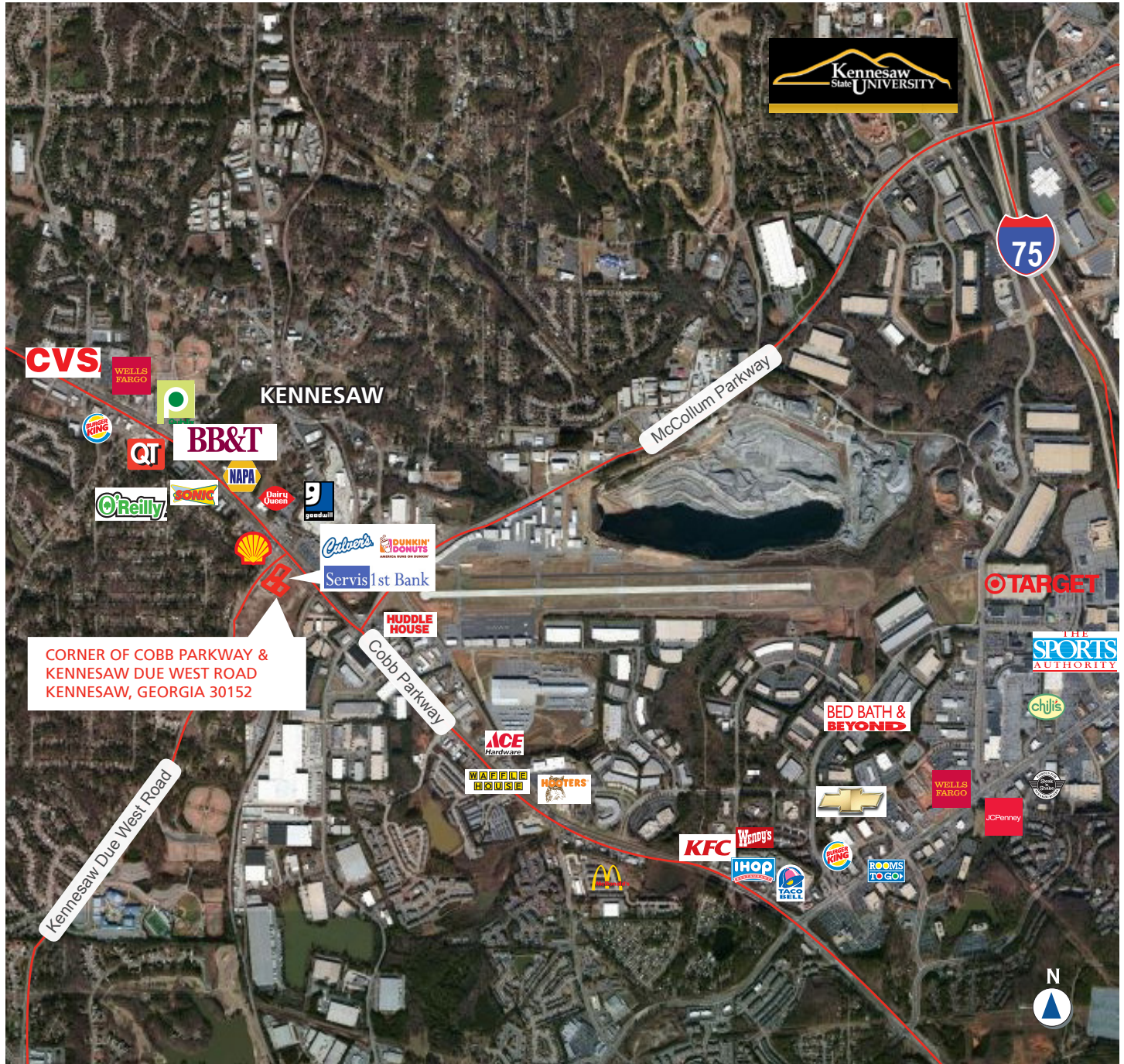
KYLE GABLE
404.867.3332
kgable@pioneerlandga.com

Developed Commercial Sites

Sites for Sale

Kennesaw, Georgia 30152
Cobb County

AERIAL SHOWING RETAIL



Ackerman & Co.

LARRY WOOD
770.913.3902
lwood@ackermanco.net

 **PIONEER**
LAND GROUP

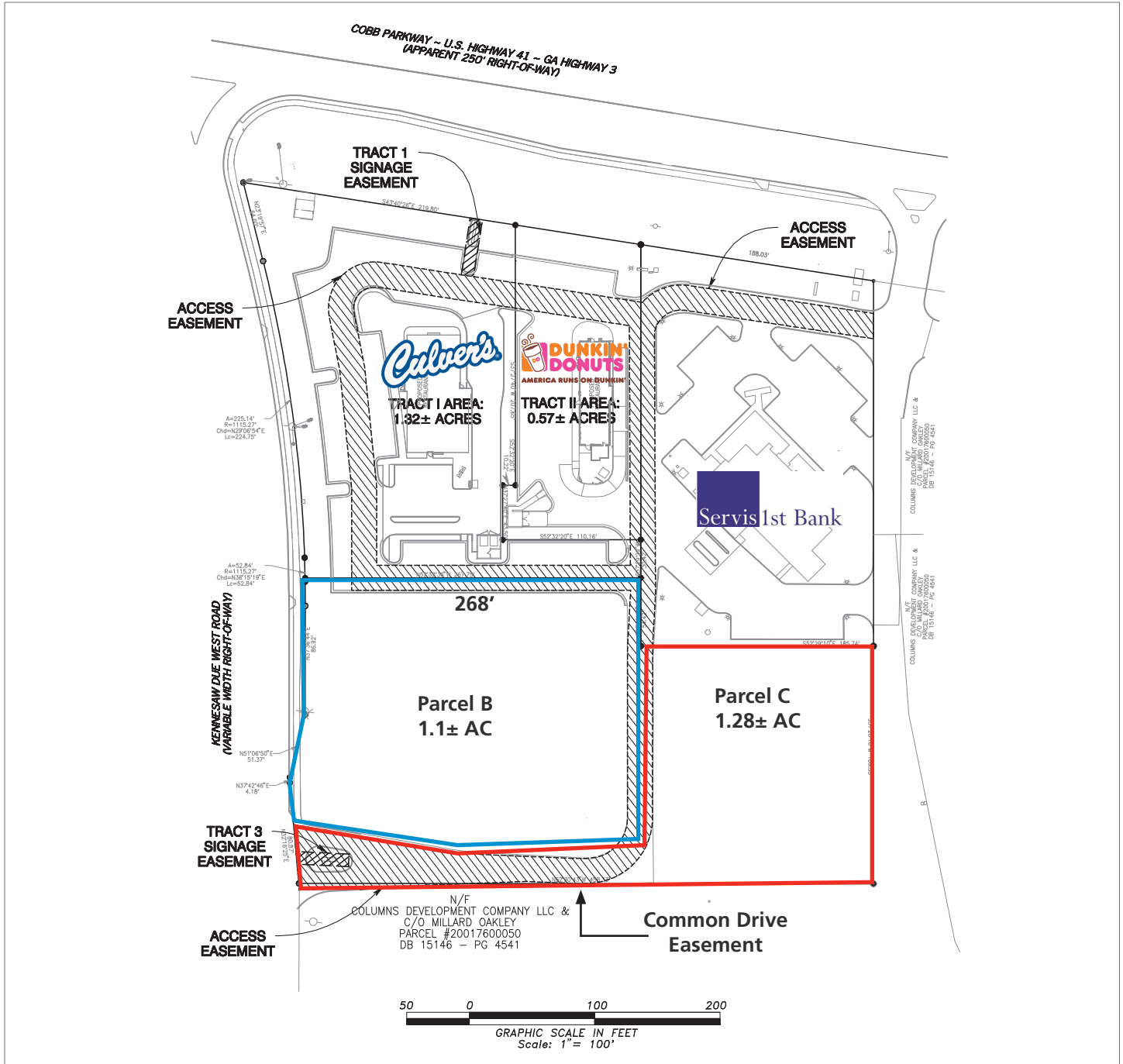
KYLE GABLE
404.867.3332
kgable@pioneerlandga.com

Developed Commercial Sites

Sites for Sale

Kennesaw, Georgia 30152
Cobb County

SITE MAP



Ackerman & Co.

LARRY WOOD
770.913.3902
lwood@ackermanco.net



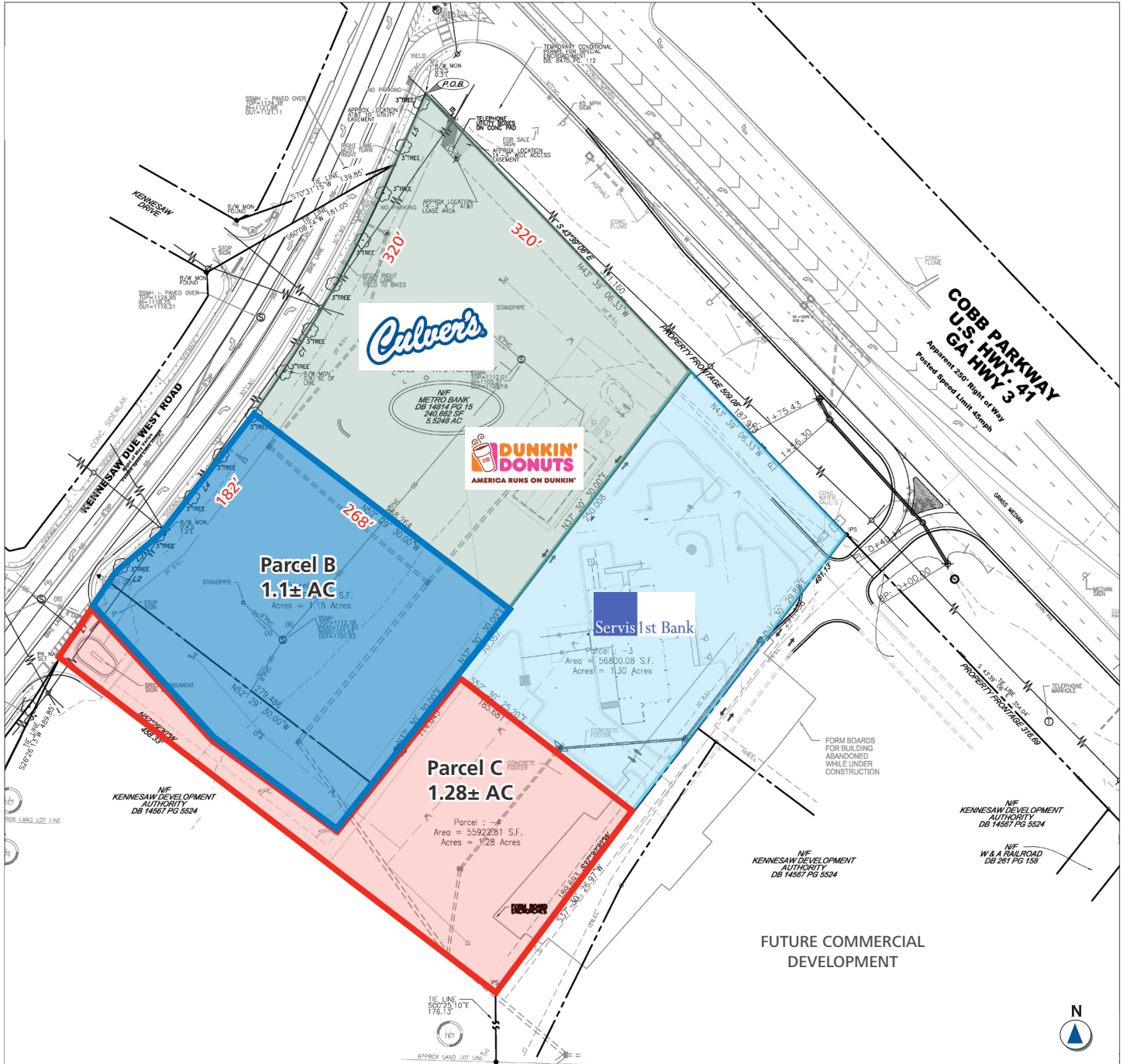
KYLE GABLE
404.867.3332
kgable@pioneerlandga.com

Developed Commercial Sites

Sites for Sale

Kennesaw, Georgia 30152
Cobb County

PARCELS



Ackerman & Co.

LARRY WOOD
770.913.3902
lwood@ackermanco.net



KYLE GABLE
404.867.3332
kgable@pioneerlandga.com