

32749 FRANKLIN ROAD
FRANKLIN, MICHIGAN

OFFICE / MEDICAL
INVESTMENT SALE
4,251 Square Feet



**SIGNATURE
ASSOCIATES**
KNOW SIGNATURE | KNOW RESULTS

RARE OPPORTUNITY



PROPERTY FEATURES

- 4,251 square foot building for sale
- Located in the heart of Franklin
- Rare opportunity to purchase
- Purchase price includes 1,131 sq. ft. 2-story barn which is fully leased
- This is a must-see property!
- Sale Price: \$1,200,000 (\$282.29/sq.ft.)



For more information, please contact:

JEFFREY TREPECK
(248) 359 0626

jtrepeck@signatureassociates.com

CHRIS MONSOUR
(248) 948 0107

cmonsour@signatureassociates.com

SIGNATURE ASSOCIATES
One Towne Square, Suite 1200
Southfield, MI 48076
www.signatureassociates.com

Interior Photos



For more information, please contact:

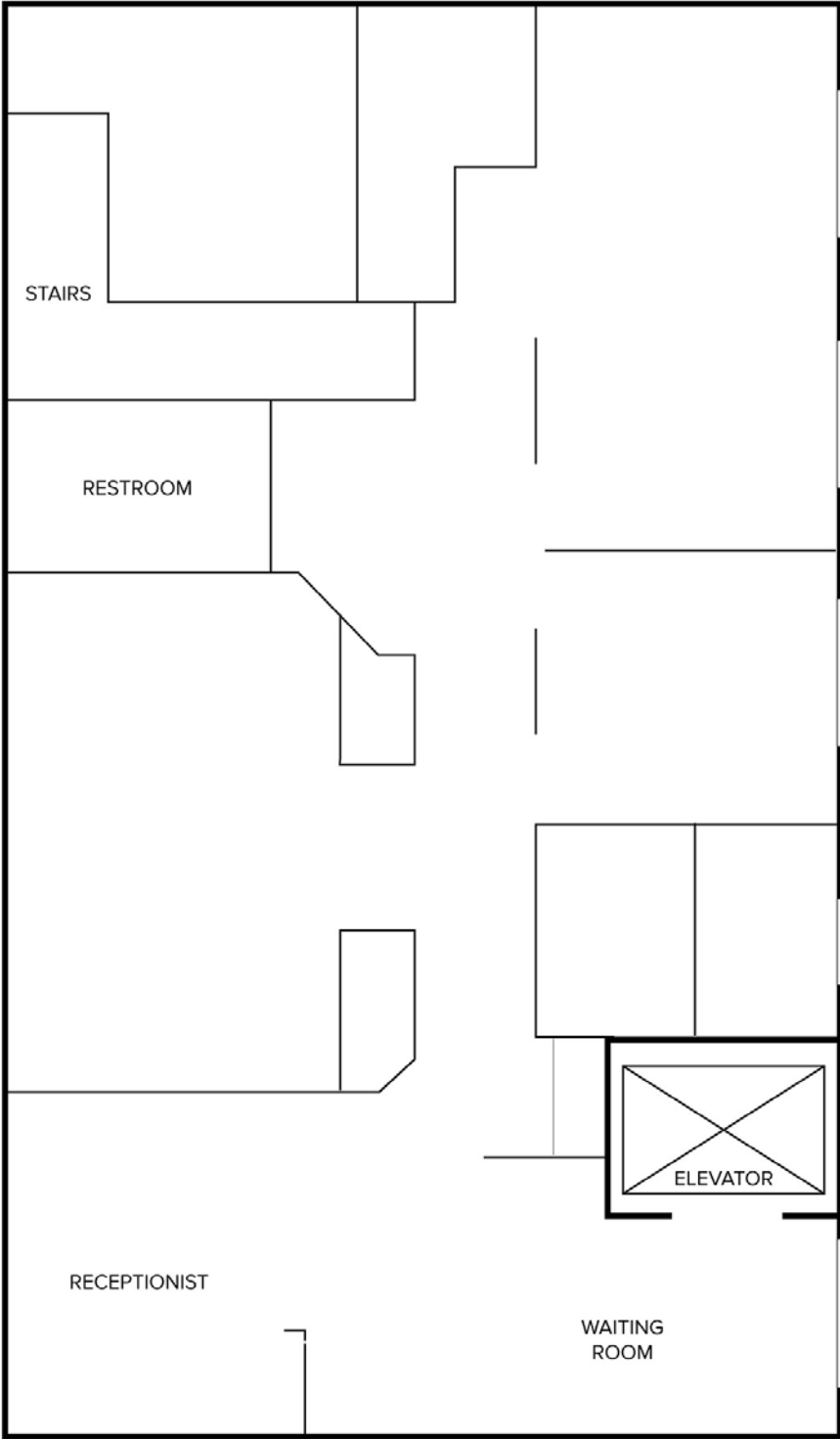
JEFFREY TREPECK
(248) 359 0626
jtrepeck@signatureassociates.com

CHRIS MONSOUR
(248) 948 0107
cmonsour@signatureassociates.com

SIGNATURE ASSOCIATES
One Towne Square, Suite 1200
Southfield, MI 48076
www.signatureassociates.com

Floor Plan

SECOND FLOOR



For more information, please contact:

JEFFREY TREPECK
(248) 359 0626
jtrepeck@signatureassociates.com

CHRIS MONSOUR
(248) 948 0107
cmonsour@signatureassociates.com

SIGNATURE ASSOCIATES
One Towne Square, Suite 1200
Southfield, MI 48076
www.signatureassociates.com