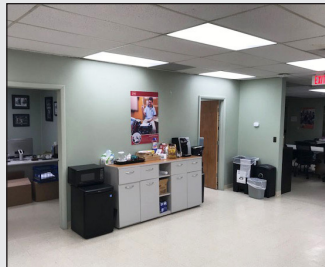


2 Office Spaces Available Immediately
465 Mola Boulevard, Elmwood Park, NJ 07407
\$16.95 PSF GROSS (plus heat & electric)

2,425 SF Office Space

Great Lease Space For A Professional Practice



- Six private offices
- Large meeting area
- Generous clerical pool area
- Common area kitchenette
- Well maintained common area men's and woman's rooms
- Common courtyard is main lobby entrance
- Ample parking

1,030 SF Office Space

Great Lease Space For A Yoga/Pilates Studio



- Open floor plan
- Primary entrance right next to parking
- Common area kitchenette
- Well maintained common area men's and women's rooms
- Has private entrance and courtyard access
- Ample parking



Common courtyard lobby to both spaces and main entrance to 2,425 SF space shown at left.

For More Information Contact:

Brian Scheuer

brian@chausrealty.com
201-232-1979 (Cell)

Jeff Chaus

jeff@chausrealty.com
201-723-9440 (Cell)

Richard Harris

America East Real Estate LLC
rj@americaeastcorp.com
201-888-1512 (Cell)

270 Terrace Avenue
Hasbrouck Heights, NJ 07604
P. 201-288-8818 F. 201-288-8815

CHAUS REALTY LLC

