



**2860-2890 Bluff Street**  
Boulder, CO

**Michael-Ryan McCarty**

mccarty@gibbonswhite.com  
(303) 586-5939

**Angela Topel**

angela@gibbonswhite.com  
(303) 586-5921

**Patrick Weeks**

patrick@gibbonswhite.com  
(303) 586-5935

**John Kelly**

**Boulder Valley Real Estate**  
john@bouldervalleyre.com  
(303) 591-1608

www.gibbonswhite.com



**Property Info & Gallery**



**View Map**

## Affordable Retail Flex Space For Lease

Available Space	2,310 sq. ft.
Lease Rate / sq. ft.	\$16.50 NNN
Expenses / sq. ft.	\$8.10*

\*Not Including Utilities

- Retail Space in the Heart of Boulder's Bustling 28th Street Corridor
- Located One Block East of 28th Street & One Block South of Valmont Rd
- Unit 2870 is a Spacious West-Facing Unit with Parking Directly in Front of the Entrance
- Affordable Introductory Lease Rates with 6% Annual Escalations

The information included has been obtained from sources believed reliable. While we do not doubt the accuracy of the information, it has not been verified and no guarantee, warranty, or representation is being made.

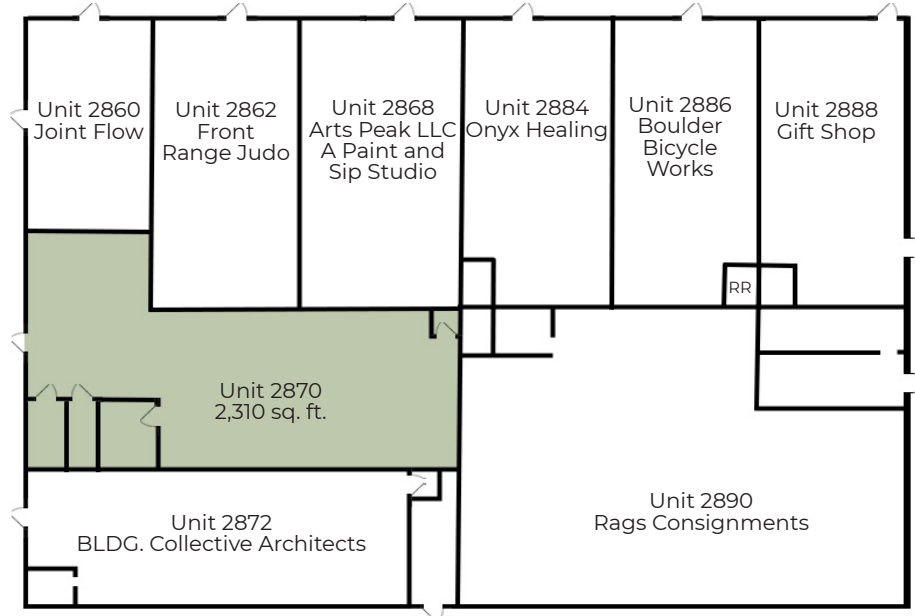


2305 Canyon Blvd, Suite 200, Boulder, CO 80302 - (303) 442-1040

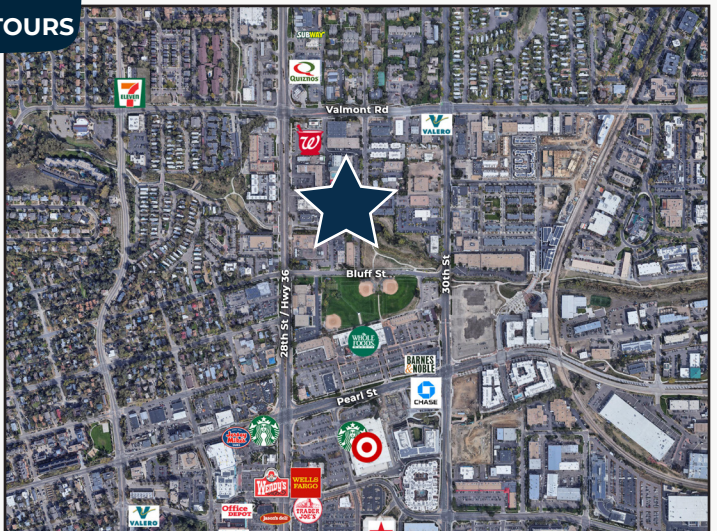
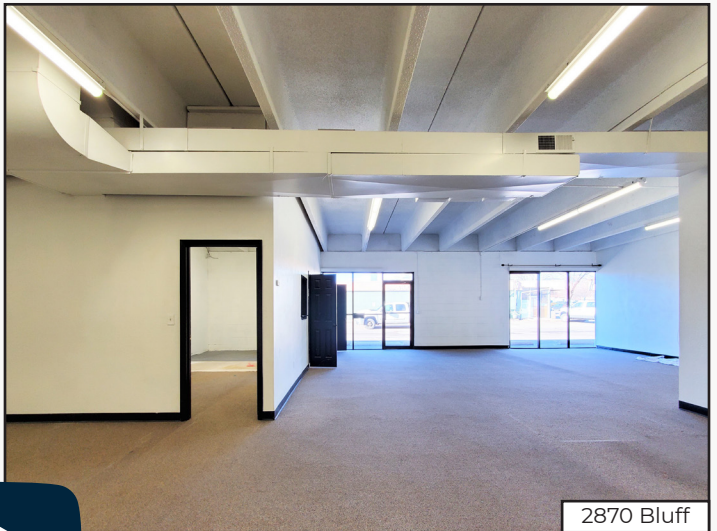
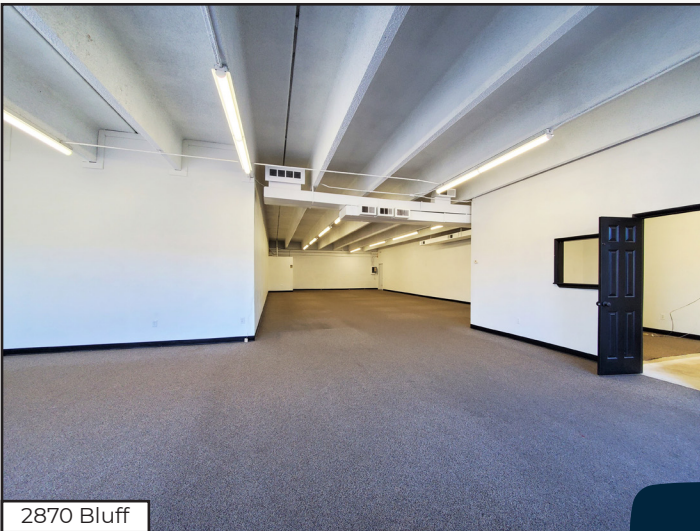
© 2022 Gibbons-White, Inc.

2860-2890 Bluff Street

2870 = 2,310 sq. ft. \$16.50 NNN  
\$4,736 /Mo. Gross\*



\* Based on Current Estimated Expenses Not Including Utilities, Subject to Change



The information included has been obtained from sources believed reliable. While we do not doubt the accuracy of the information, it has not been verified and no guarantee, warranty, or representation is being made.