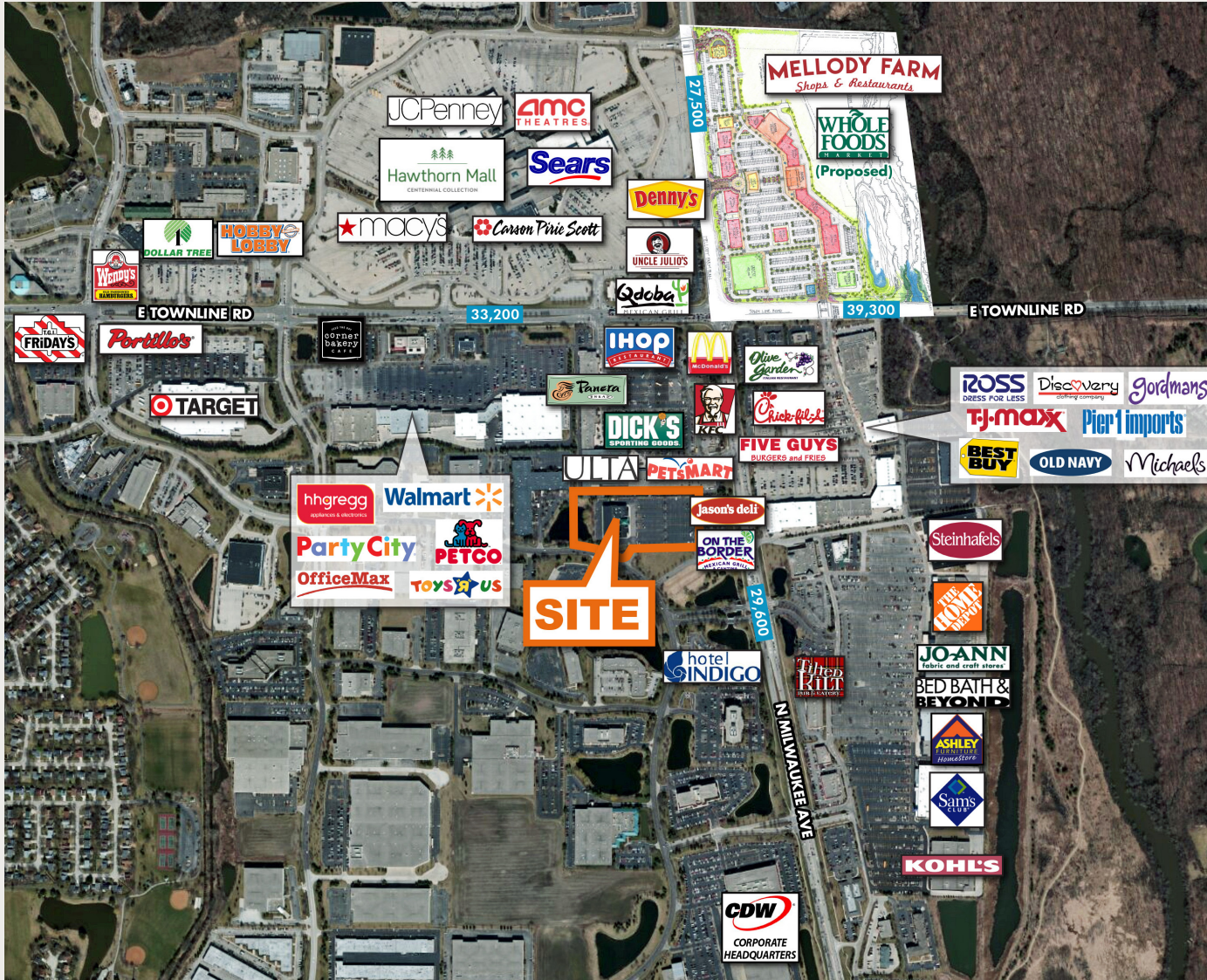
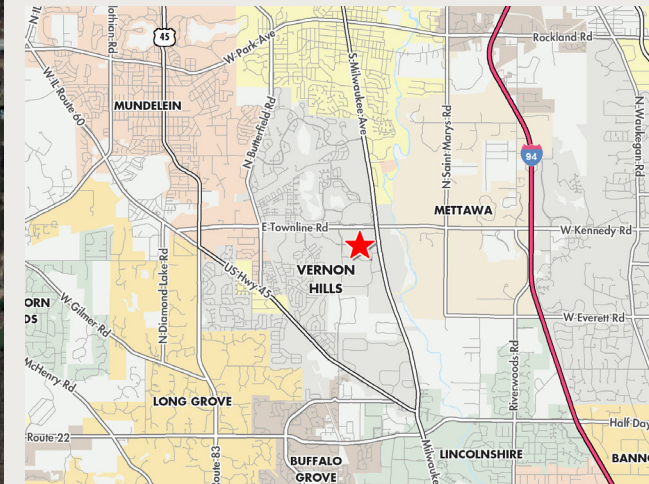


BUILDING AND LAND FOR SALE



555 LAKEVIEW PKWY VERNON HILLS, IL

**32,505 SF BUILDING
6.21 ACRES**



DEMOGRAPHICS

	1 Mile	3 Miles	5 Miles
• Population	2,757	53,201	129,112
• Average HH Income	\$128,754	\$133,520	\$148,222
• Daytime Population	16,517	61,257	134,964

FOR INFORMATION, CONTACT:

Patrick Owens
patrick.owens@transwestern.com
312-881-7031

Shannon Pope
shannon.pope@transwestern.com
312-881-7030

BUILDING AND LAND FOR SALE

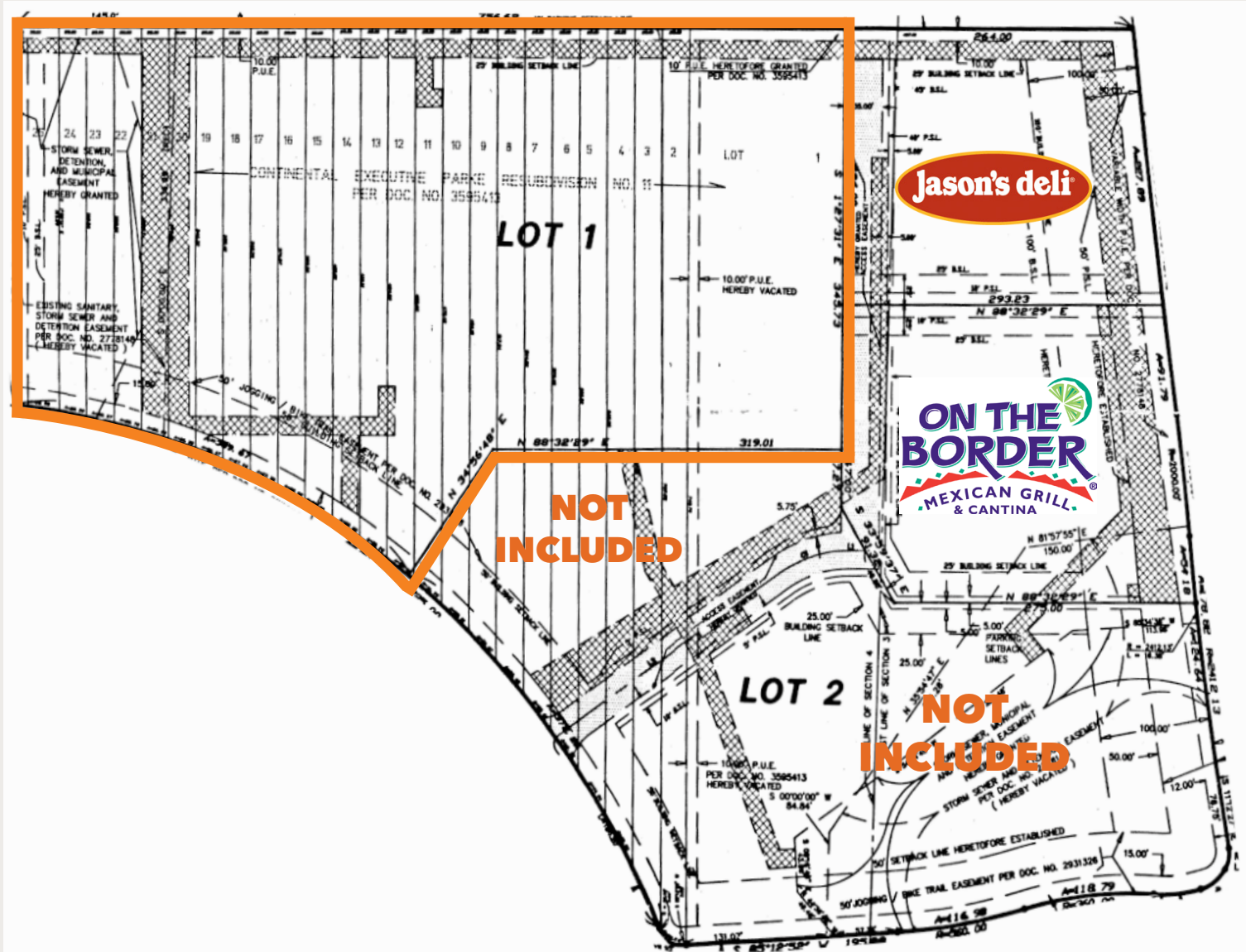
555 LAKEVIEW PKWY | VERNON HILLS, IL



BUILDING AND LAND FOR SALE

555 LAKEVIEW PKWY | VERNON HILLS, IL

SURVEY



BUILDING AND LAND FOR SALE

555 LAKEVIEW PKWY | VERNON HILLS, IL

BUILDING PLAN

PROPERTY INFORMATION

- Well situated in one of the premier retail trade areas in the Chicago MSA
- Located in the heart of Vernon Hills, S of SWC Milwaukee Rd. (Rt. 21) and Townline Rd. (Rt. 60)
- Exceptional demographics include: 129,112 people with an average household income of \$148,222 within 5 miles of the site
- Stoplight access to property
- Exposure to over 29,600 cars per day
- Potential re-development opportunities include retail, school, church, medical, or self storage

