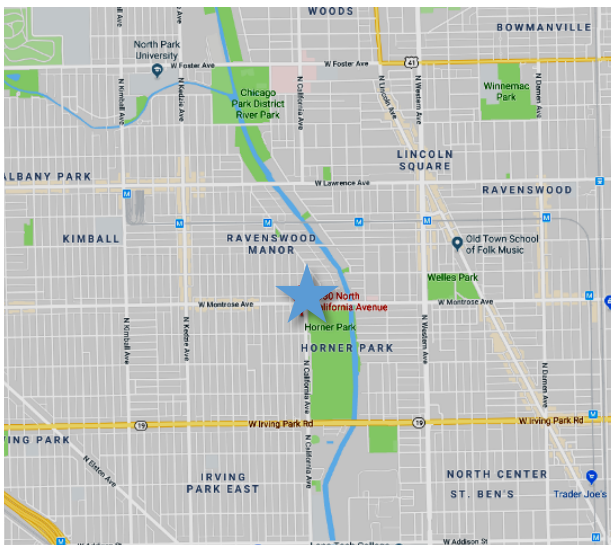




2,160 SF Commercial condo at the ground level of recently completed 4 story mixed use development. Condo can be split into 2 spaces - 1,160 SF and 1,000 SF. Each space has separate plumbing and HVAC. Located across from Horner Park. 0.5 miles south of CTA Francisco stop.



**Sale Price:**

\$249,000 or \$149,000 per space

**Parking Space:**

\$20K per parking space

**Zoning:**

C1-2

**Area:**

North Center

**HOA:**

\$4 PSF Approximately



**CRAIG WOLF**

847-989-9653

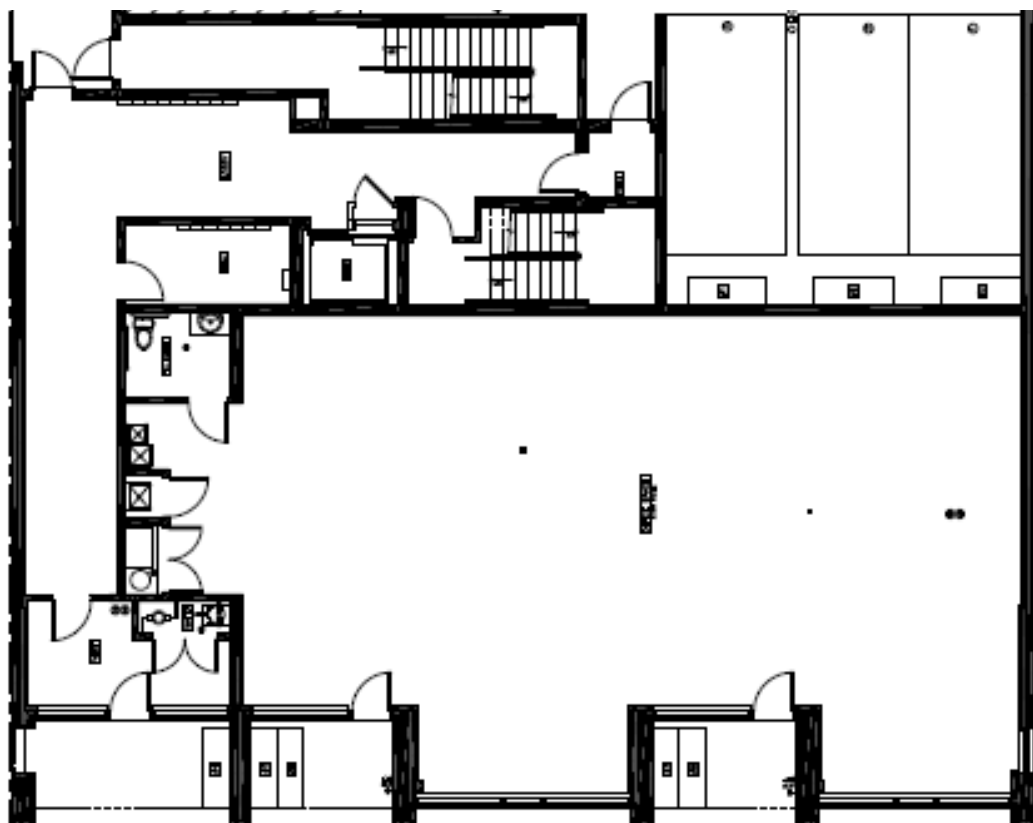
CRAIG@STRAUSSREALTY.COM

**STRAUSS REALTY, LTD.**  
4220 W. MONTROSE AVENUE  
CHICAGO, ILLINOIS 60641  
PHONE: 773-736-3600

## COMMERCIAL CONDOS FOR SALE



### FIRST FLOORPLAN



Parking  
in rear

N. California Avenue



**CRAIG WOLF**

847-989-9653

CRAIG@STRAUSSREALTY.COM

**STRAUSS REALTY, LTD.**  
4220 W. MONTROSE AVENUE  
CHICAGO, ILLINOIS 60641  
PHONE: 773-736-3600