



1505th

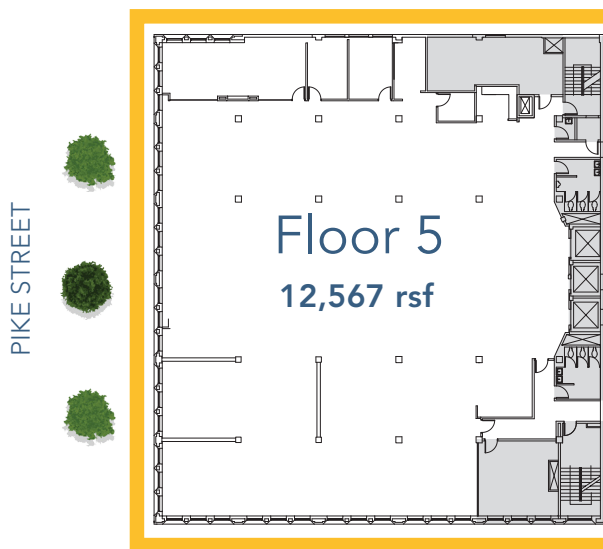
Located at the corner
of everything

1505Fifth.com



Building Features

- Creative office space located in the heart of Downtown Seattle's retail core
- Walk Score: 98 "Walker's Paradise"
- Transit score: 100 "Rider's Paradise"
- Major façade improvements including new exterior windows
- Lobby redesign and common area renovations including bike storage, shower/locker facilities and elevator cabs
- Steps from Westlake Center, Pacific Place, and unlimited amenities
- Minutes from local attractions such as the Seattle Great Wheel, The 5th Avenue Theatre, Seattle Public Library, and Seattle Art Museum
- Buses, lightrail, monorail, and zipcars all within a few blocks
- Nearby parks include Westlake Park, Freeway Park and Victor Steinbrueck Park
- Easy access to I-5, I-90 and Hwy 99
- Efficient floor plates and low building load factor
- Locally owned & managed



FIFTH AVENUE

— window line



FIFTH AVENUE

 150+

Retail destinations within 3 block radius

 135+

Restaurants within 3 block radius

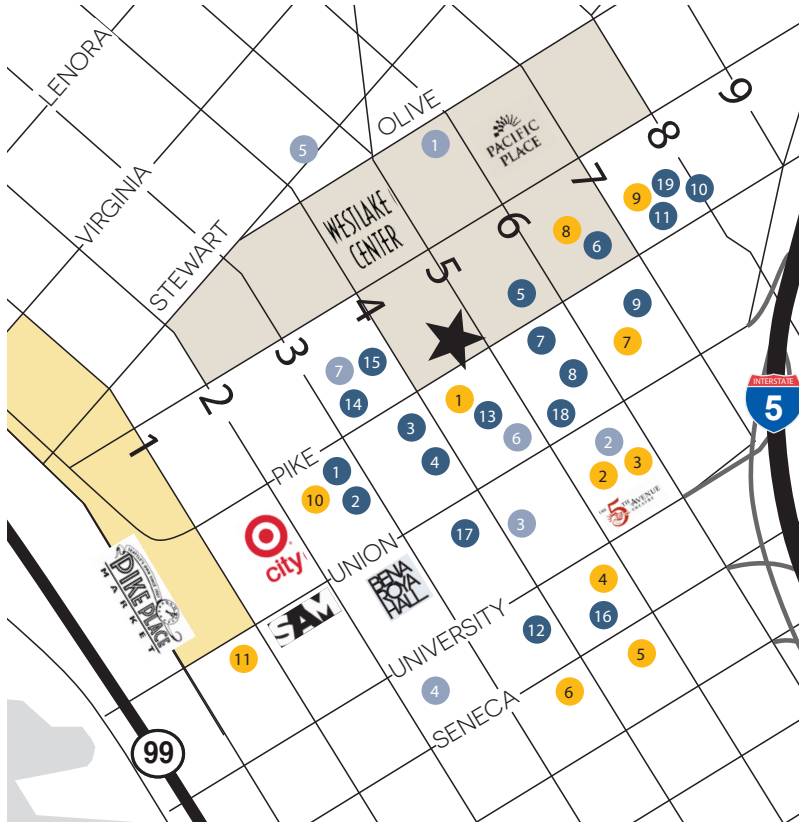
 22

Hotels within 3 block radius

 18

Parking garages/lots within 3 block radius

A neighborhood with everything at your front door



Retail Core
 Pike Place Market

Food

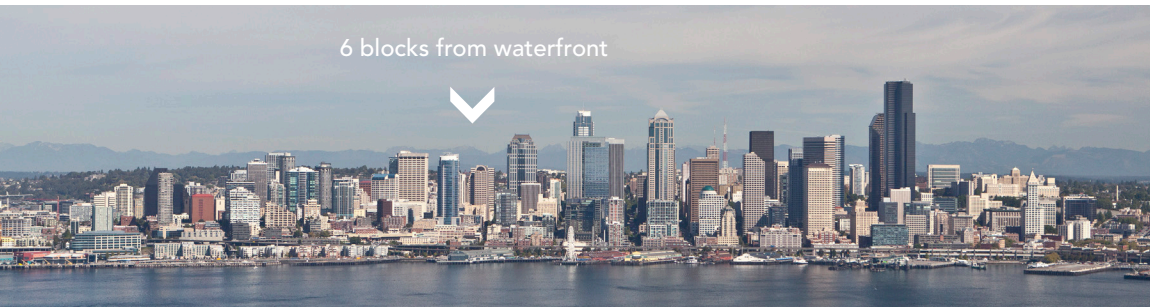
- | | |
|--------------------------------|----------------------------|
| 1 Qdoba | 10 Sullivans |
| 2 Wild Ginger | 11 Cheesecake Factory |
| 3 RN 74 | 12 Purple Cafe |
| 4 Potbelly Sandwiches | 13 Elephant & Castle |
| 5 Mortons Steakhouse | 14 Chipotle |
| 6 Taphouse | 15 Yardhouse |
| 7 Palomino | 16 The Georgian |
| 8 Jimmy Johns
Sushi Kudasai | 17 Capital Grille |
| 9 Daily Grill | 18 Specialty's |
| | 19 Ruth's Chris Steakhouse |

Hotels

- | | |
|------------------|-------------------|
| 1 Red Lion Hotel | 8 Roosevelt Hotel |
| 2 WAC | 9 Grand Hyatt |
| 3 Hilton | 10 Glen Hotel |
| 4 Fairmont | 11 Four Seasons |
| 5 W Seattle | 12 Westin |
| 6 Hotel Monaco | |
| 7 Sheraton | |

Health & Fitness

- 1 Seattle Executive Fitness
- 2 Washington Athletic Center
- 3 Gold's Gym
- 4 Core Fitness
- 5 Urban Yoga Spa
- 6 Downtown Bodyworks
- 7 Ummelina



6 blocks from waterfront

1505 5th

1505 5th Avenue,
Seattle, Washington 98101

1505Fifth.com

For leasing information contact:

Joe Gowan

+1 206 607 1738

joe.gowan@am.jll.com

Lloyd Low

+1 206 607 1796

lloyd.low@am.jll.com

