

**FOR
LEASE**

**6224 SILVER STAR ROAD
ORLANDO, FL 32808**

**RETAIL /AUTOMOTIVE
REDEVELOPMENT OPPORTUNITY**



PROPERTY HIGHLIGHTS

- 6,000 SF (8 Bay) Configuration (Great Retail Conversion)
- Building is 60' x 100', Lot is 175'+/- x 149'+/-
- 23,985 SF Corner Lot Zoned C-1 (corner of Powers and Silver Star Road with access on both roads)
- Large Pole & Building Signage with 2016 Building Improvements
- Near HW 50, John Young Parkway, Pine Hills Rd & Hiawassee
- Built to Suit for a Credit National Tenant
- Great QSR with Drive Thru Location
- Lease with the Option to Buy (see broker for details)
- Lease Rate: \$6,500/month, NNN
- Land Lease Option: 20 Year Minimum Term

CONTACT

Vincent F. Wolle, CCIM, SIOR
407.448.1823 *mobile*
CREManager@Gmail.com

Results Real Estate Partners, LLC
Licensed Commercial Real Estate Brokers
108 Commerce Street, Suite 200
Lake Mary, Florida 32746

407.647.0200 *main*
407.647.0205 *fax*

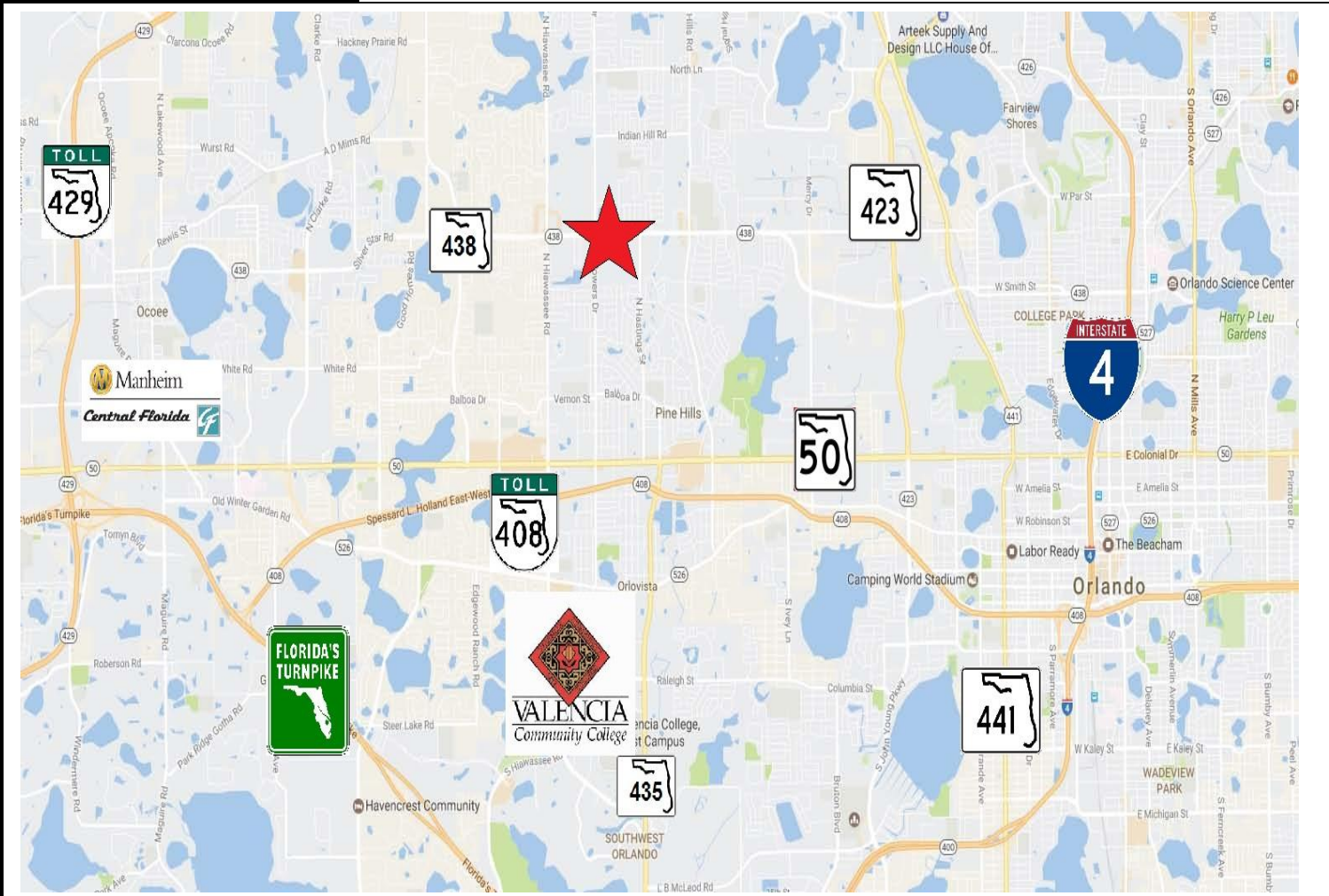
www.ResultsREPartners.com

This information is from sources we deem reliable and is subject to prior sale, lease, withdrawal without notice, or change in prices, rates, or conditions. No representation is made as to the accuracy of any information furnished.

**FOR
LEASE**

**6224 SILVER STAR ROAD
ORLANDO, FL 32808**

**RETAIL /AUTOMOTIVE
REDEVELOPMENT OPPORTUNITY**



CONTACT

Vincent F. Wolle, CCIM, SIOR
407.448.1823 mobile
CREManager@Gmail.com

Results Real Estate Partners, LLC
Licensed Commercial Real Estate Brokers
108 Commerce Street, Suite 200
Lake Mary, Florida 32746

407.647.0200 main
407.647.0205 fax

www.ResultsREPartners.com

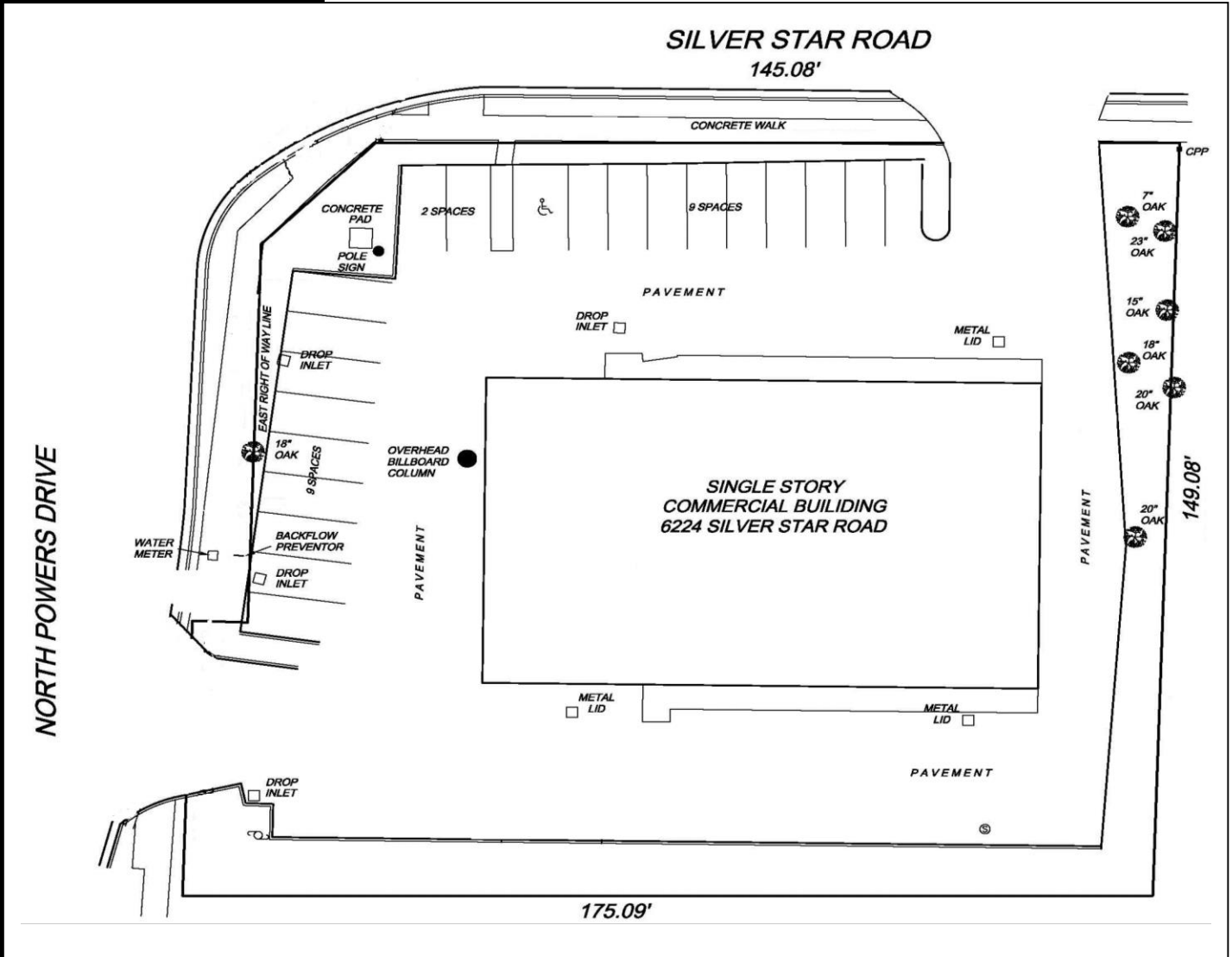


This information is from sources we deem reliable and is subject to prior sale, lease, withdrawal without notice, or change in prices, rates, or conditions. No representation is made as to the accuracy of any information furnished.

**FOR
LEASE**

**6224 SILVER STAR ROAD
ORLANDO, FL 32808**

**RETAIL /AUTOMOTIVE
REDEVELOPMENT OPPORTUNITY**



CONTACT

Vincent F. Wolle, CCIM, SIOR
407.448.1823 mobile
CREManager@Gmail.com

Results Real Estate Partners, LLC
Licensed Commercial Real Estate Brokers
108 Commerce Street, Suite 200
Lake Mary, Florida 32746

407.647.0200 main
407.647.0205 fax

www.ResultsREPartners.com

2016 Demographics:

	1 Mile	3 Mile	5 Mile
Population:	22,003	114,376	255,826
Median Household Income:	\$25-34K	\$50-74K	\$50-74K
Race & Ethnicity:	70% B	61% B	46% B
Average Age:	25-34	25-34	25-34

Traffic Counts:

Silver Star Road:	45,500 VPD
Powers Drive:	14,500 VPD

This information is from sources we deem reliable and is subject to prior sale, lease, withdrawal without notice, or change in prices, rates, or conditions. No representation is made as to the accuracy of any information furnished.