



2409 W. NORTH AVENUE

WICKER PARK | CHICAGO

AVAILABLE

AVAILABLE

China Station 駿華
773-252-1023

PROMINENT
HIGH-TRAFFICKED
CORNER AVAILABLE/
DIVISIBLE AT
NORTH & WESTERN

2401-09 W. NORTH AVENUE

Wicker Park | Chicago



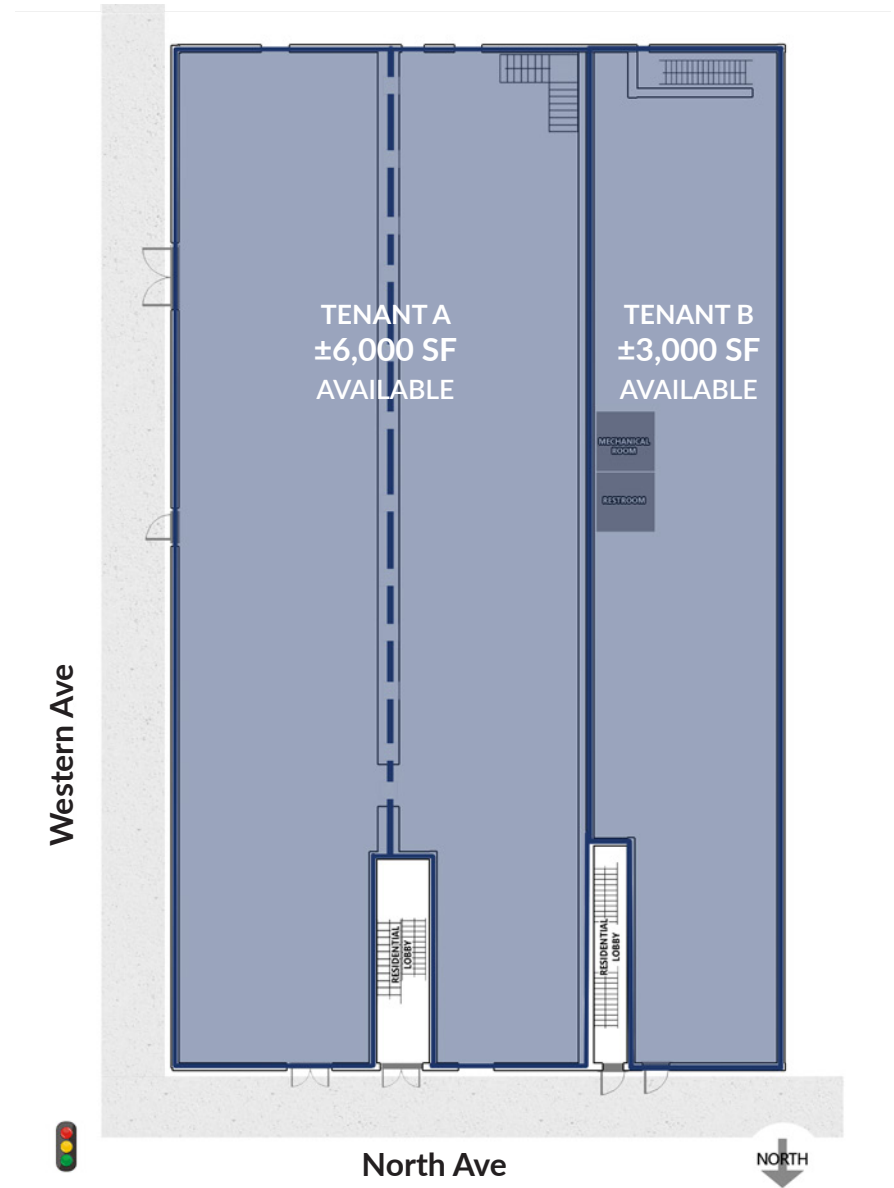
SPACE AVAILABLE

Tenant A: ±6,000 SF
 Tenant B: ±3,000 SF
 Total: ±9,000 SF

SITE SUMMARY

- Second Generation nail salon and spa
- Located in Wicker Park on North Avenue, west of the Damen / North / Milwaukee intersection
- Open floor plan with private office spaces
- High Visibility Signage with windows lining North Ave
- 24,100 cars daily at the intersection of North & Western Avenue
- Dense surrounding residential population
- This area is home to some of the hottest dining and retail destinations in Chicago, notably Piece Brewery, Big Star Taco, LoKaL, Furious Spoon, Small Cheval, Paradise Park, Shinola, Urban Outfitters, Akira, lululemon, and the recently opened boutique hotel, The Robey.

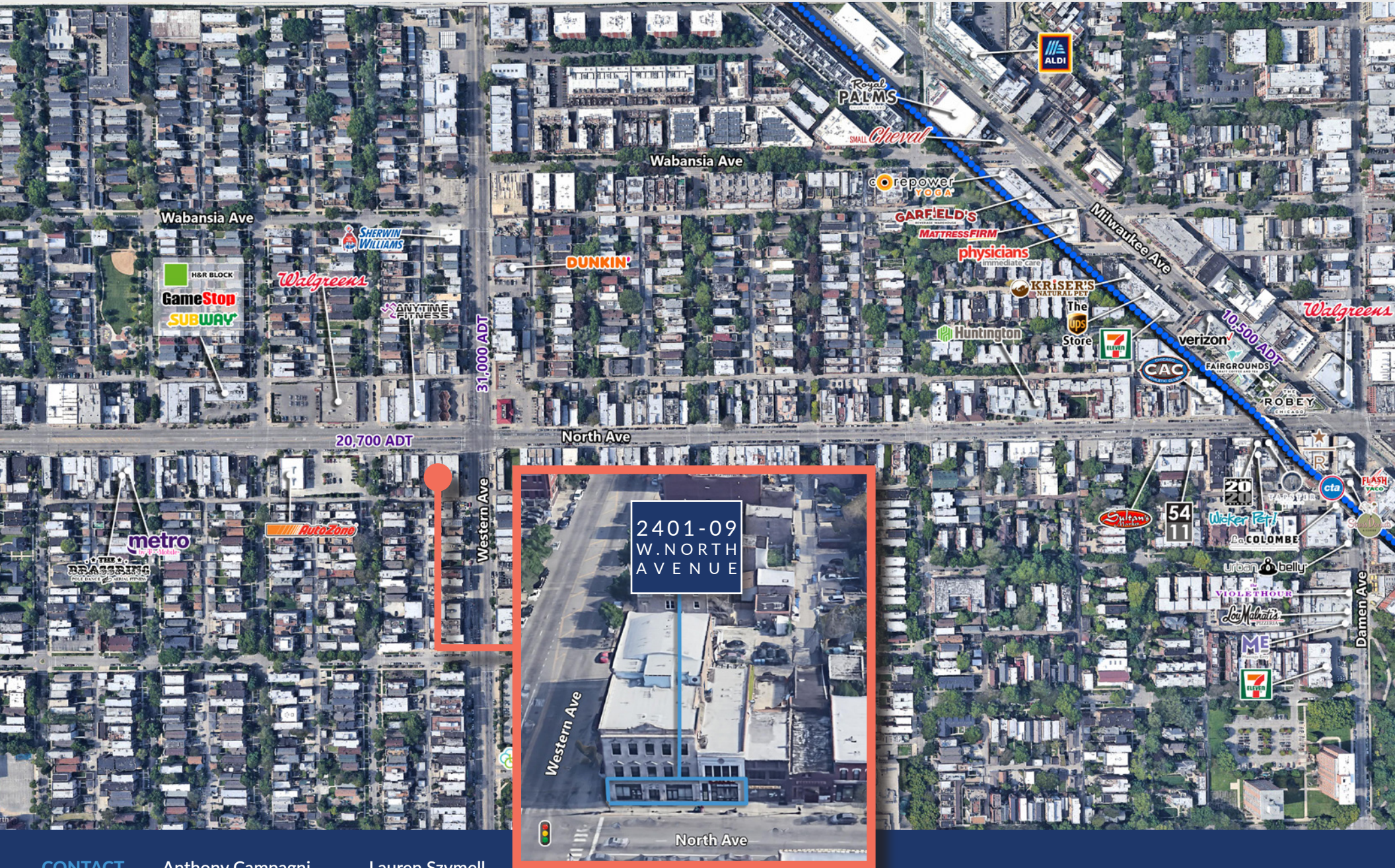
TOTAL POPULATION	19,548	½ Mile
	73,642	1 Mile
	235,603	2 Mile
AVERAGE HH INCOME	\$100,084	½ Mile
	\$92,061	1 Mile
	\$89,951	2 Mile
DAYTIME POPULATION	5,222	½ Mile
	19,047	1 Mile
	74,691	2 Mile



PROMINENT/HIGH-TRAFFICKED CORNER AVAILABLE/DIVISIBLE AT NORTH & WESTERN

2401-09 W. NORTH AVENUE

Wicker Park | Chicago



CONTACT

Anthony Campagni
ac@arcgrp.com
(630) 908-5695

Lauren Szymell
lszymell@arcgrp.com
(630) 908-5703

