

6235 Perimeter Dr.  
Dublin, OH 43017

For Lease



## MULTI-TENANT PROPERTY

Year Built: 2002

Available Space:  
Suite B- 3,800 SF

Lease Rate:  
\$22 PSF NNN

Estimated Operating  
Expenses: \$7.56 PSF

- Great location and visibility at the Northern entrance to the Giant Eagle Shopping Center on the corner of Muirfield and Avery and Perimeter Drive. High traffic count.
- Restaurants, banking and shopping all within walking distance.
- One Mile to I-270 and US 33.
- 25 Parking Spaces

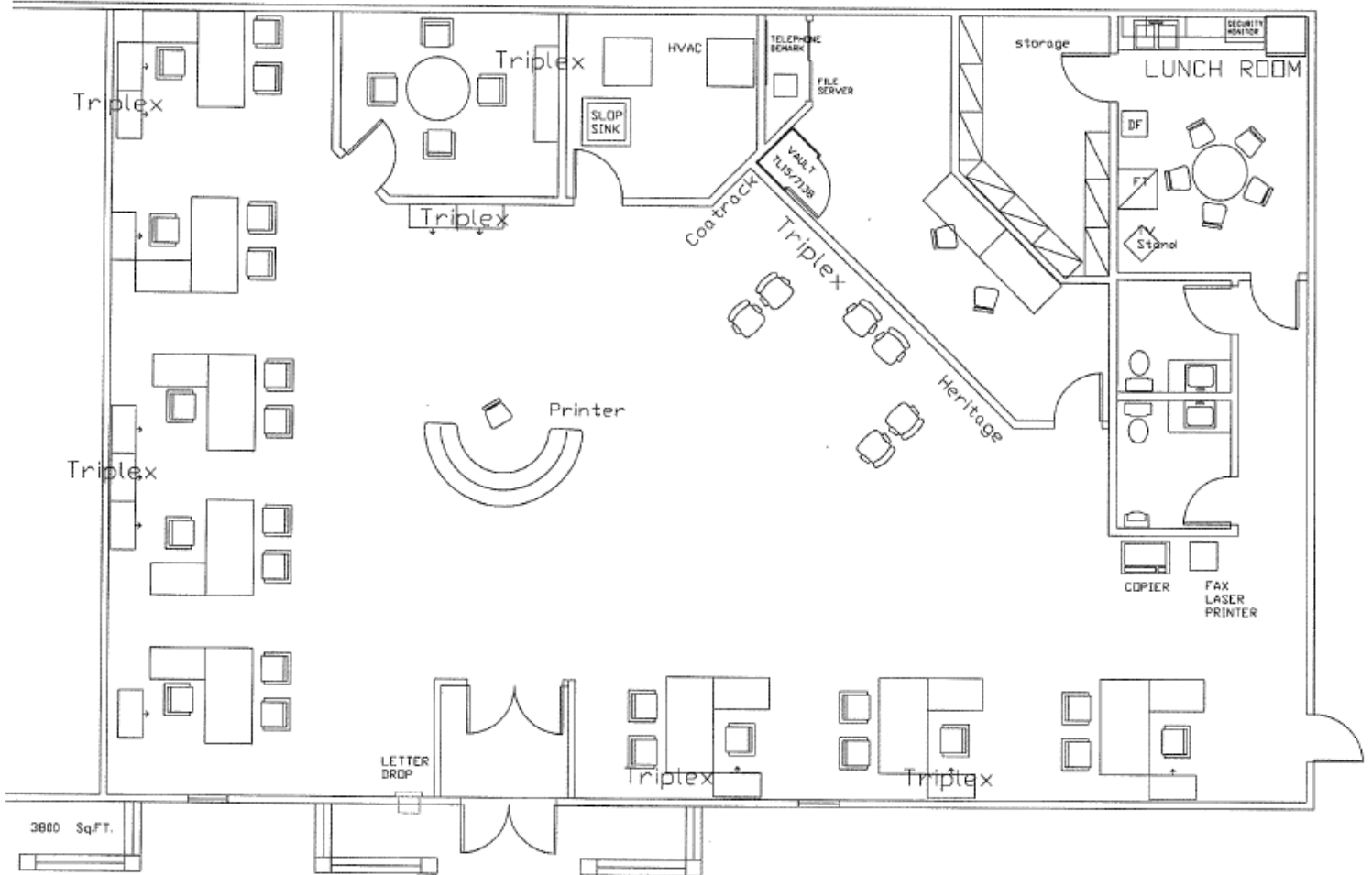


Rick Smith  
614.561.7417  
bkitchen@AlterraRE.com

Alterra Real Estate  
614.365.9000  
www.AltterraRE.com

6235 Perimeter Dr.  
Dublin, OH 43017

For Lease

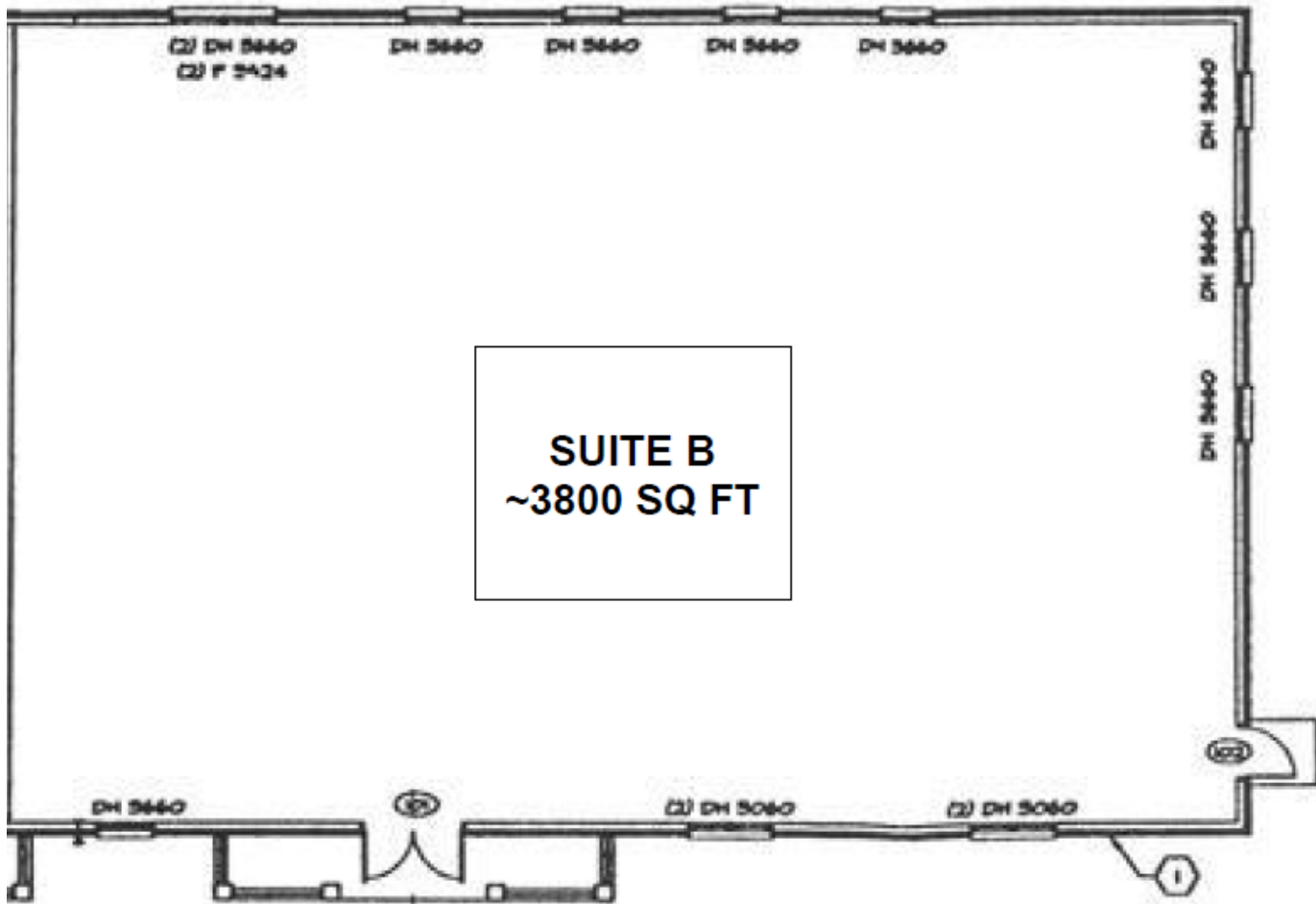


Rick Smith  
614.561.7417  
bkitchen@AlterraRE.com

Alterra Real Estate  
614.365.9000  
www.AltterraRE.com

6235 Perimeter Dr.  
Dublin, OH 43017

For Lease



**EXHIBIT A**  
**Site Plan**



Rick Smith  
614.561.7417  
bkitchen@AlterraRE.com

Alterra Real Estate  
614.365.9000  
www.AltterraRE.com

# 6235 Perimeter Dr. Dublin, OH 43017

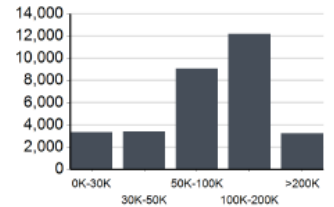
# For Lease

## Location Facts & Demographics

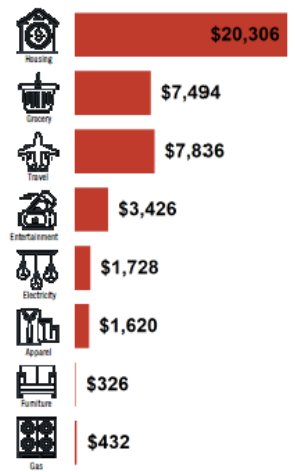
Demographics are determined by a 10 minute drive from 6235 Perimeter Dr, Columbus, OH 43017



### INCOME BY HOUSEHOLD



### HH SPENDING



### CITY, STATE

**Columbus, OH**

### POPULATION

**72,155**

### AVG. HH SIZE

**2.59**

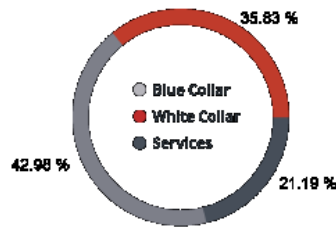
### MEDIAN HH INCOME

**\$91,461**

### HOME OWNERSHIP



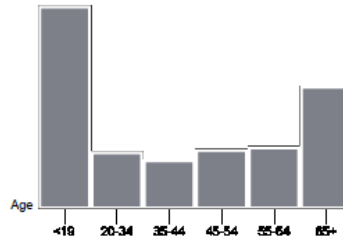
### EMPLOYMENT



**55.05 %** Employed  
**0.95 %** Unemployed

### GENDER & AGE

49.91 % 50.09 %



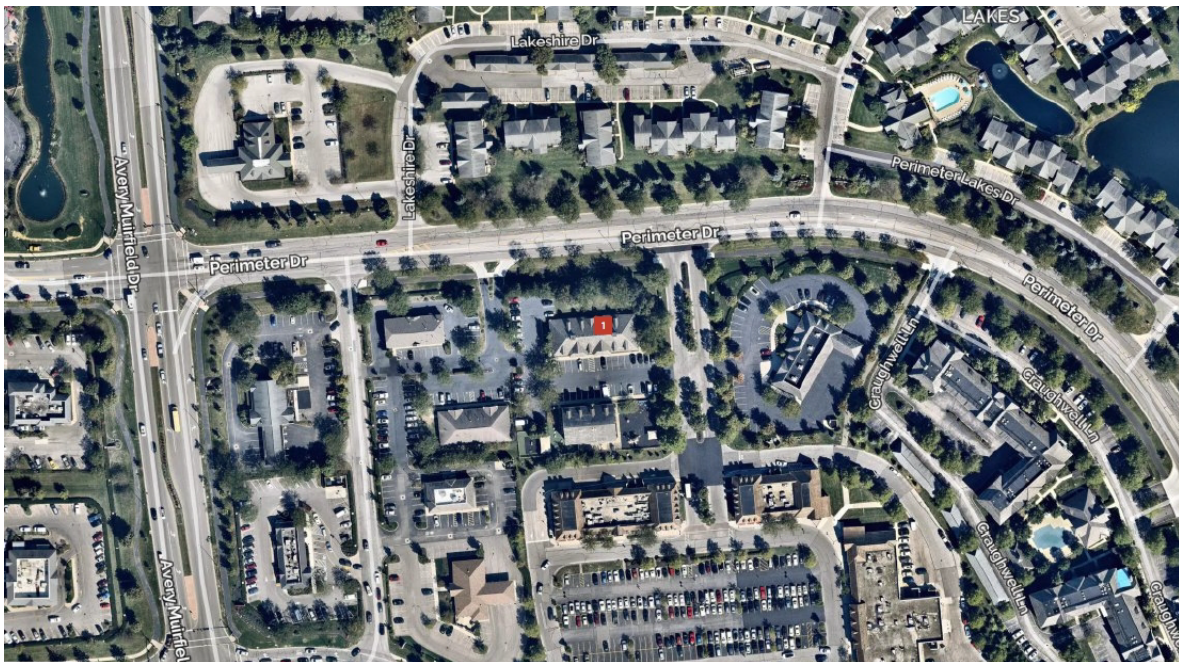
### RACE & ETHNICITY

White: 77.87 %  
Asian: 17.83 %  
Native American: 0.00 %  
Pacific Islanders: 0.02 %  
African-American: 0.65 %  
Hispanic: 1.93 %  
Two or More Races: 1.69 %

### EDUCATION

High School Grad: 16.61 %  
Some College: 17.38 %  
Associates: 5.91 %  
Bachelors: 63.73 %

This information supplied herein is from sources we deem reliable. It is provided without any representation, warranty or guarantee, expressed or implied as to its accuracy. Prospective Buyer or Tenant should conduct an independent investigation and verification of all matters deemed to be material, including, but not limited to, statements of income and expenses. Consult your attorney, accountant, or other professional advisor.



Rick Smith  
614.561.7417  
bkitchen@AlterraRE.com

Alterra Real Estate  
614.365.9000  
www.AltterraRE.com