

40 West 57th Street

AREA:

Entire 19th Floor: 25,000 RSF (divisions to 13,176 RSF (northern portion) and 11,824 RSF (southern portion) considered)

RENTAL RATE:

Call for Information

POSSESSION:

60-90 Days

TERM:

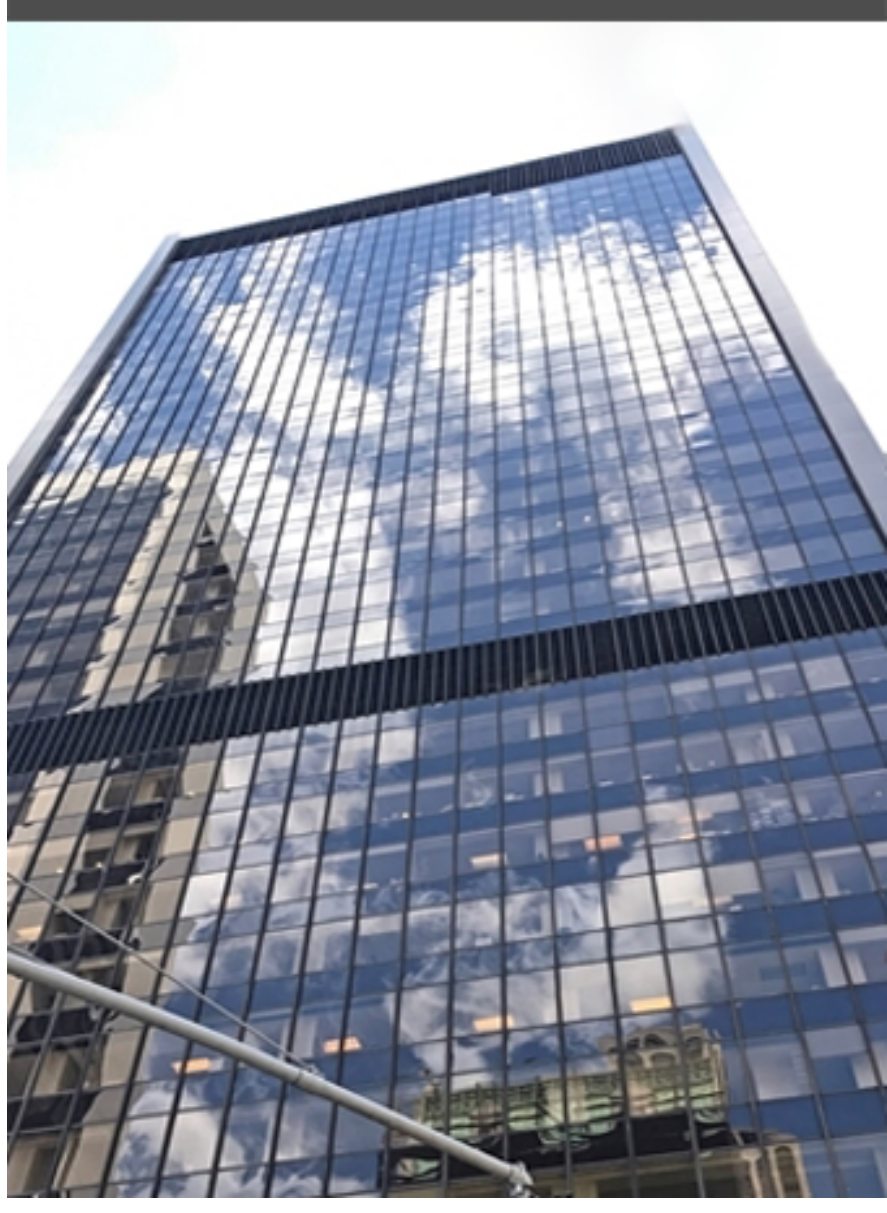
December 30, 2030

[Click to View Video Tour](#)

[Click to View Virtual Tour](#)

\$100 GIFT CARD

to every broker who tours space with a qualified tenant

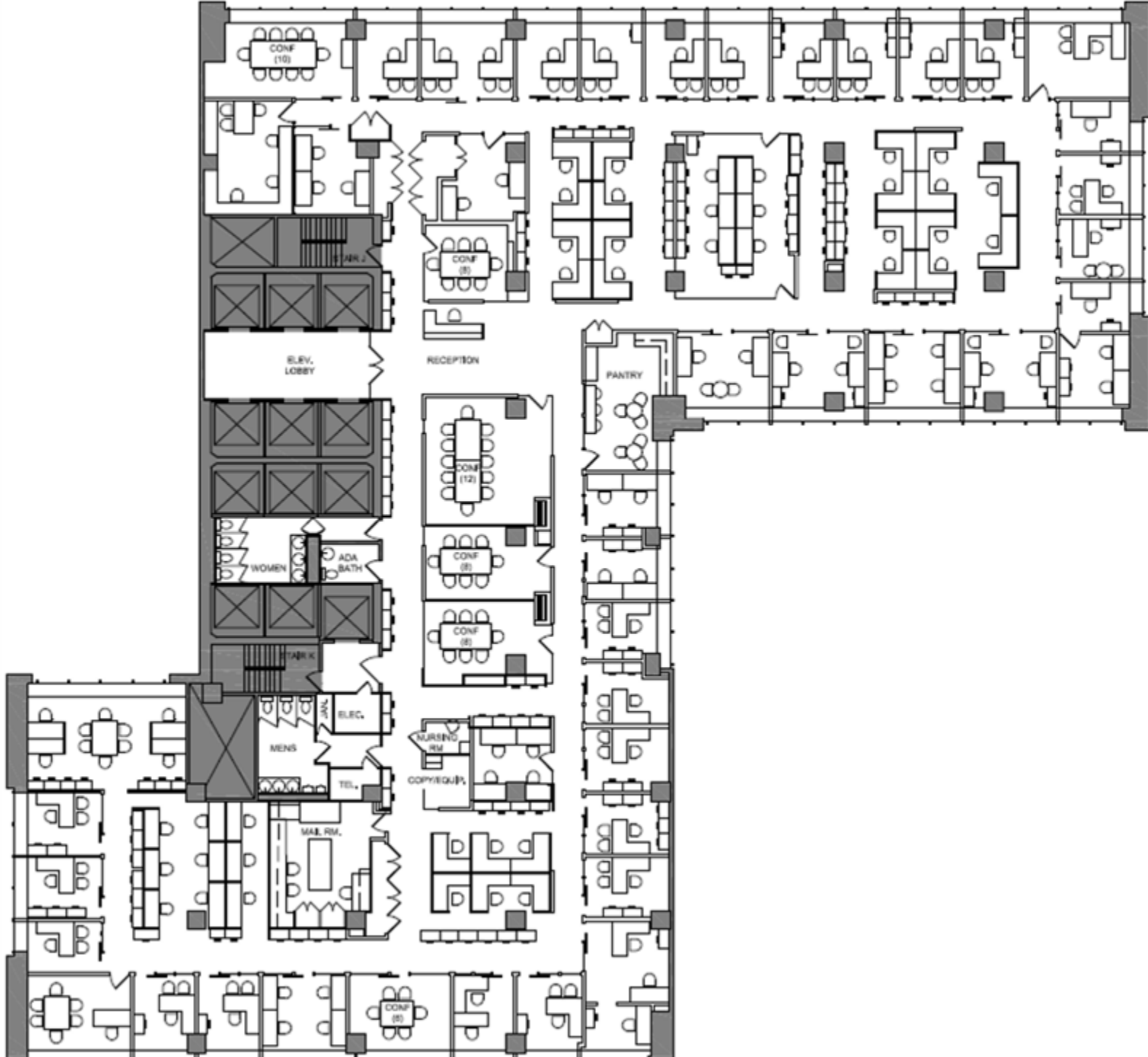


COMMENTS:

- Divisions of 13,176 RSF (northern portion) and 11,824 RSF (southern portion) considered
- Beautiful contemporary buildout
- Highly efficient installation
- Recently renovated
- Full height ceilings
- Glass entrance directly off elevators
- 42 windowed offices with glass fronts
- Furniture available
- 6 varied sized conference rooms providing seatings for 6 to 12 people
- Eat in full pantry
- Mail room, copy room & nursing room
- M's, W's and ADA lavatories



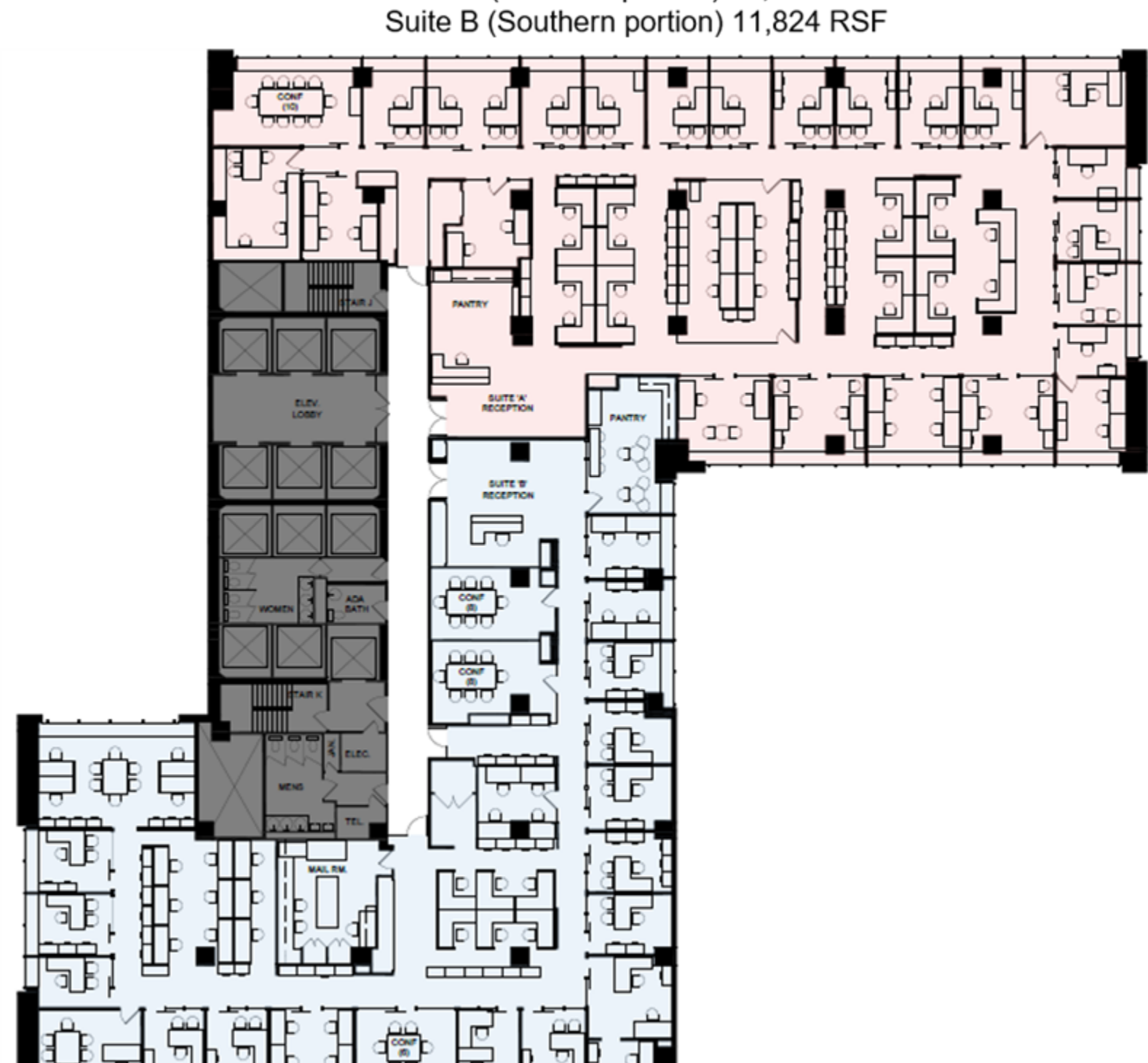
Existing Plan



Suggested Divided Plan

Suite A (Northern portion) 13,176 RSF

Suite B (Southern portion) 11,824 RSF



[DOWNLOAD BROCHURE](#)

FOR INFORMATION, PLEASE CONTACT:

James Saunders

Executive Managing Director
t 212-372-2350

james.saunders@nmrk.com

E.N. Cutler

Managing Director
t 212-372-2352

en.cutler@nmrk.com

125 Park Avenue
New York, NY 10017
t 212-372-2352

nmrk.com



125 Park Avenue, New York, NY 10017 t 212-372-2352

The information contained herein has been obtained from sources deemed reliable but has not been verified and no guarantee, warranty or representation, either express or implied, is made with respect to such information. Terms of sale or lease and availability are subject to change or withdrawal without notice.

©2022 Newmark. All Rights Reserved.