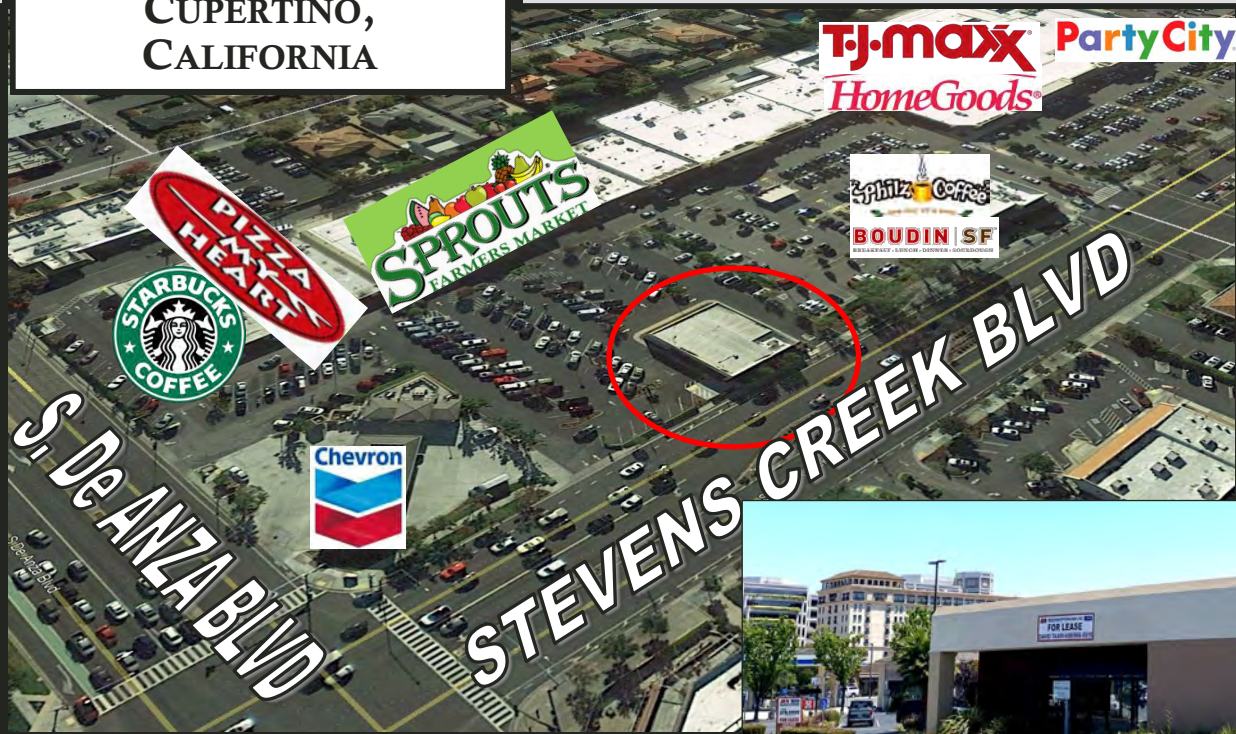


20510
 STEVENS CREEK BLVD
 CUPERTINO,
 CALIFORNIA

Rare Cupertino Pad Building FOR LEASE CUPERTINO CROSSROADS



- 4,200± SF Pad Building
- Adjacent Parking, Plus More Spaces Throughout Cupertino Crossroads Shopping Center
- Will Consider Restaurant Uses
- Corner of Stevens Creek and De Anza Blvd, with Over 73,000+ ADT Through This Intersection

- Center is Anchored by Sprouts, TJMaxx/HomeGoods and Party City, with Starbucks, Philz Coffee & Boudin SF Nearby

ESTIMATED DEMOGRAPHICS:

**Corner of
 Stevens Creek Blvd
 and
 De Anza Blvd**

	<u>1 MILE</u>	<u>3 MILE</u>	<u>5 MILES</u>
POPULATION:	25,076	199,282	474,741
AVG. HH INCOME	\$167,084	\$167,262	\$150,746

FOR INFORMATION CONTACT

David Taxin
 Lic. #00983163
dtaxin@moinc.net
 (408) 477-2508

Jeremy Awdisho
 Lic. #02064232
Jeremy@moinc.net
 (650) 814-4510

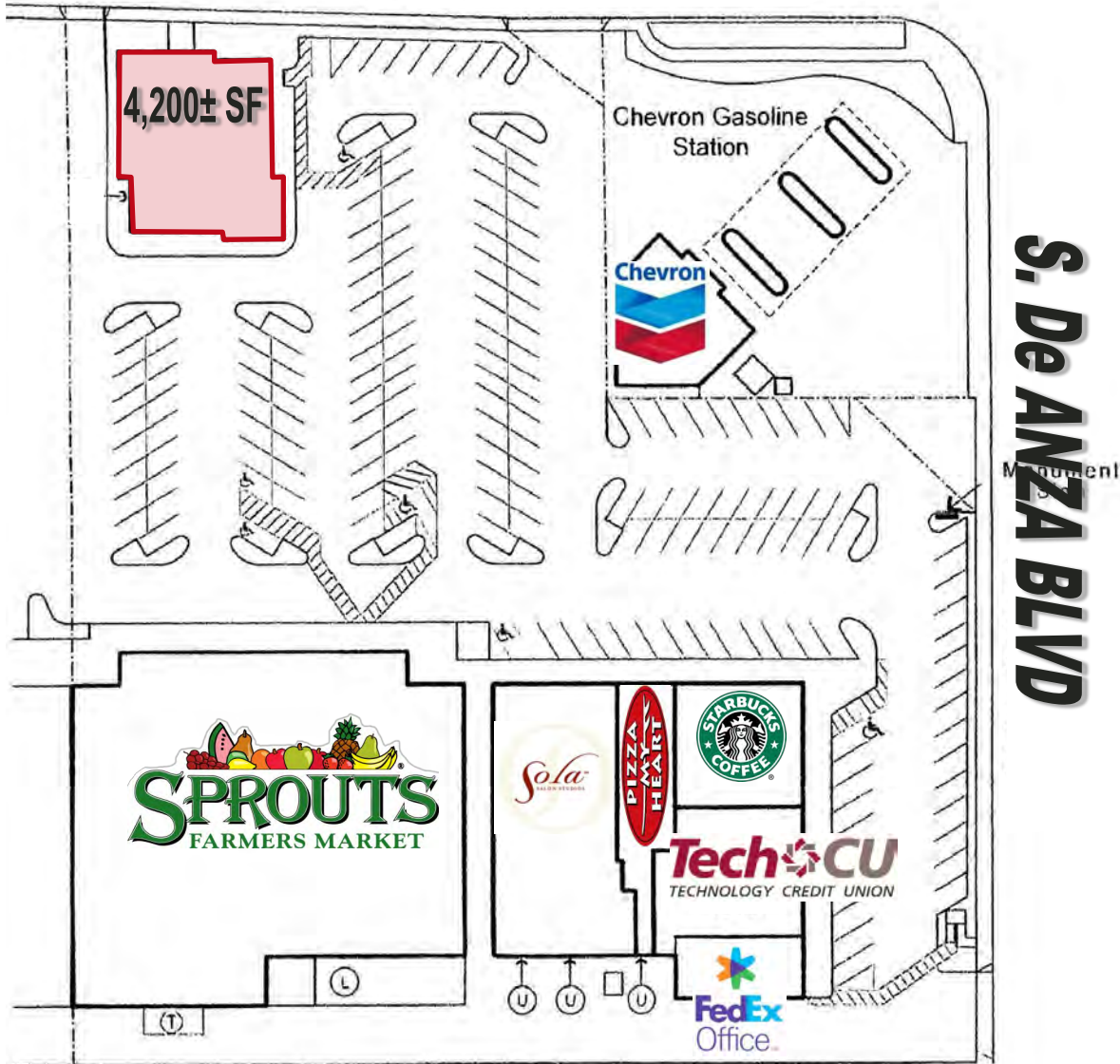


COMMERCIAL BROKERAGE | INVESTMENT SALES | PROPERTY MANAGEMENT

8 N. San Pedro Street, Suite 300 San Jose, California 95110
 Tel: 408.378.5900 www.moinc.net

20510 Stevens Creek Blvd. • Cupertino, California

STEVENS CREEK BLVD



S. De ANZA BLVD



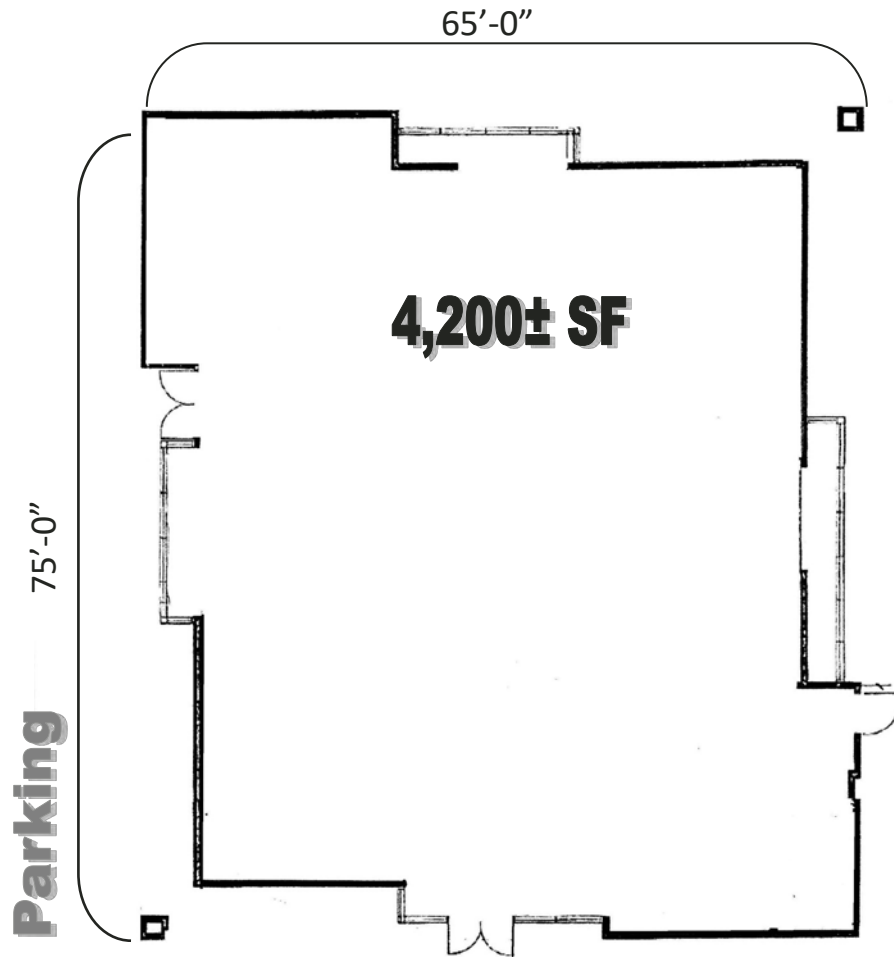
David Taxin
Lic. #00983163
dtaxin@moinc.net
(408) 477-2508

Jeremy Awdisho
Lic. #02064232
jeremy@moinc.net
(650) 814-4510

20510 Stevens Creek Blvd. • Cupertino, California

Parking

Floor Plan



David Taxin

Lic. #00983163

dtaxin@moinc.net

(408) 477-2508

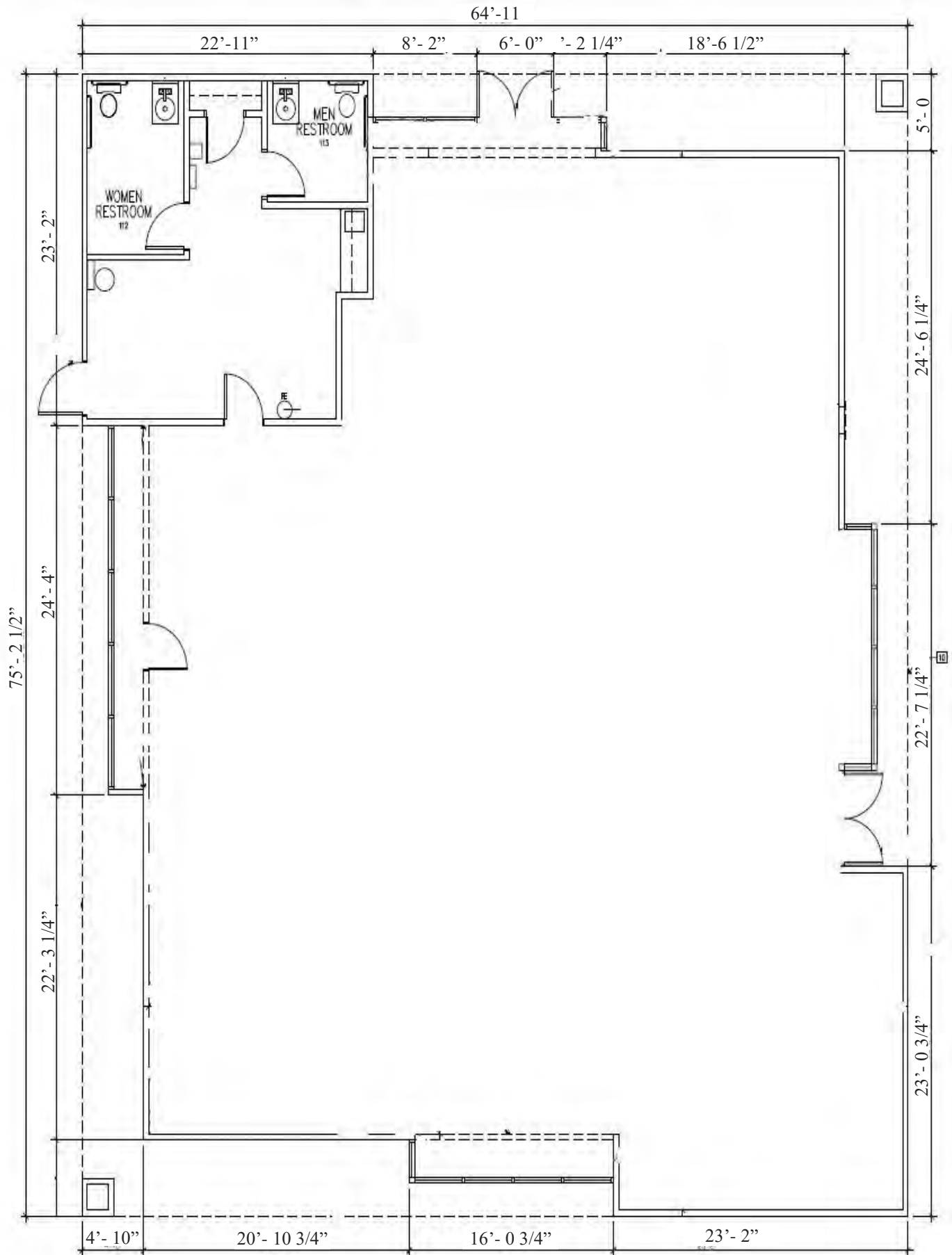
Jeremy Awdisho

Lic. #02064232

jeremy@moinc.net

(650) 814-4510

20510 Stevens Creek Blvd. • Cupertino, California



20510 Stevens Creek Blvd. • Cupertino, California



David Taxin
Lic. #00983163
dtaxin@moinc.net
(408) 477-2508

Jeremy Awdisho
Lic. #02064232
jeremy@moinc.net
(650) 814-4510