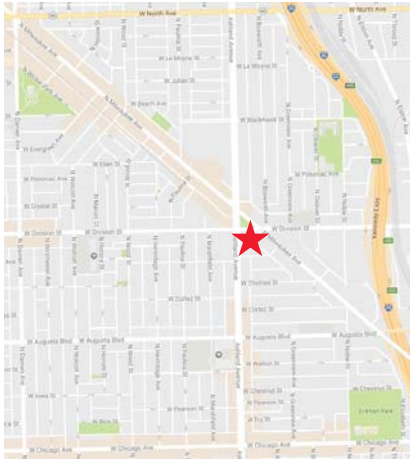


# 1555 WEST DIVISION

# COMMANDING CORNER PRESENCE IN THE UKRAINIAN VILLAGE



### PROPERTY

Rare corner vacancy along the highly trafficked Division & Ashland streets in one of Chicago's fastest growing and hippest neighborhoods. Located across the street from the bustling Division Blue Line stop, 1555 W. Division offers incomparable access to the Ukrainian Village and Bucktown residential population.

### AVAILABLE SPACE

- 3,890 sf

### RENT

Upon request.

### AREA RETAILERS AND ATTRACTIONS



### DEMOGRAPHICS

	½ MILE	1 MILE	2 MILE
<b>POPULATION</b>	18,548	51,147	227,331
<b>AVERAGE HH INCOME</b>	\$115,453	\$118,098	\$121,126
<b>DAYTIME POPULATION</b>	7,527	30,199	210,139

### TRAFFIC COUNTS

27,000 vehicles per day on Ashland Ave  
16,000 vehicles per day on Division Street  
12,000 vehicles per day on Milwaukee Ave

### CTA BLUE LINE - DIVISION STREET RIDERSHIP

Weekly: 12,761 riders (2015)  
Annual: 1,991,499 (2015)



**29'**

Division Street  
frontage



**3,890**

Square feet  
available



**\$115k**

Average HH  
Income within a  
half-mile radius



**25.5k**

Households  
within a one-  
mile radius



**51.1k**

Total  
population in  
one-mile radius

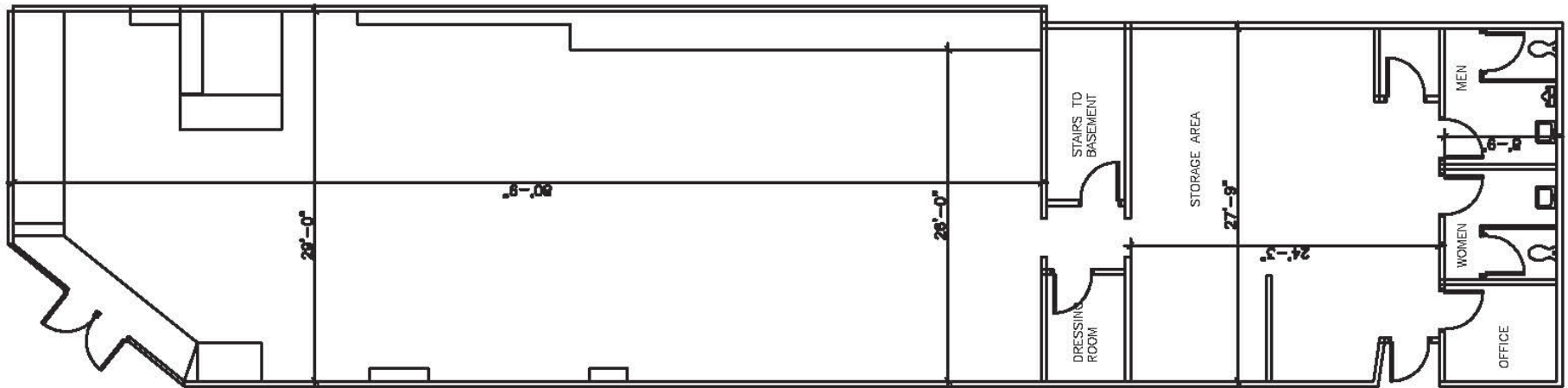
EXCLUSIVE AGENT William Winter ([wwinter@stonerealestate.com](mailto:wwinter@stonerealestate.com), 312/878-9445)

**STONE**  
REAL ESTATE

1555 WEST DIVISION

# COMMANDING CORNER PRESENCE IN THE UKRAINIAN VILLAGE

WEST DIVISION STREET



EXCLUSIVE AGENT William Winter ([wwinter@stonerealestate.com](mailto:wwinter@stonerealestate.com), 312/878-9445)

**STONE**  
REAL ESTATE