

18808 US-12 HIGHWAY CEMENT CITY, MICHIGAN

LAND FOR SALE
60.14 Acres Available



**SIGNATURE
ASSOCIATES**
KNOW SIGNATURE | KNOW RESULTS

DEVELOPMENT LAND



PROPERTY FEATURES

- 60.14 acres available
- Zoned AG-1; Master zoned commercial C1-C3
- Excellent corner with room to expand
- Large volume of commercial traffic from Jackson to Toledo
- Perfect corner for a truck stop or fueling station
- Land can be divided for the right user
- Net useable acreage is 47.67 acres
- Sale Price: \$2,000,000 (\$33,255.74/acre)



For more information, please contact:

PETER VANDERKAAY

(248) 359 3837

pvanderkaay@signatureassociates.com

PAUL SAAD

(248) 359 0652

psaad@signatureassociates.com

SIGNATURE ASSOCIATES

One Towne Square, Suite 1200

Southfield, MI 48076

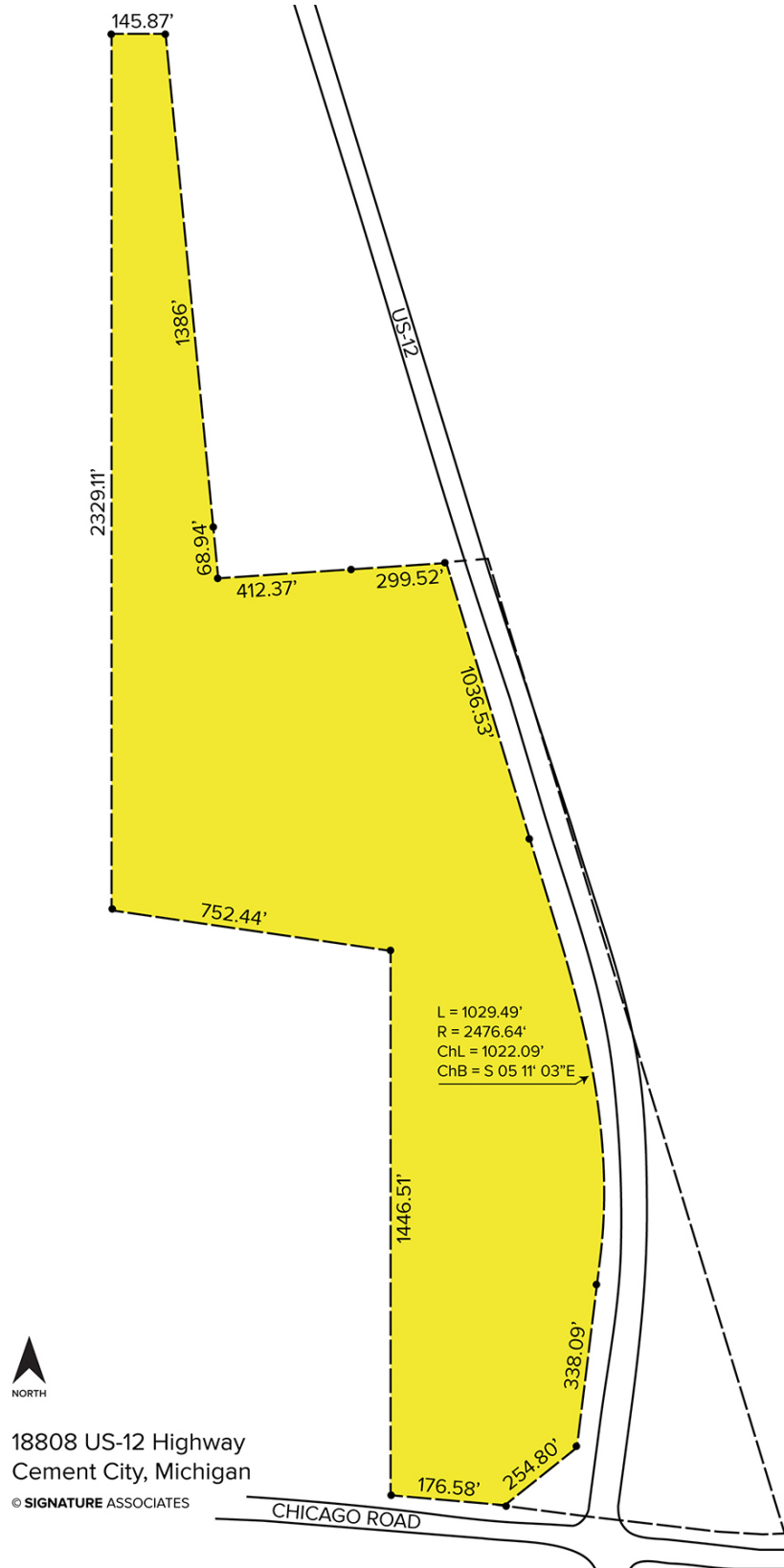
www.signatureassociates.com

18808 US-12 Highway – Cement City, Michigan

Land For Sale

60.14
Acres
AVAILABLE

Site Plan



For more information, please contact:

PETER VANDERKAAY

(248) 359 3837

pvanderkaay@signatureassociates.com

PAUL SAAD

(248) 359 0652

psaad@signatureassociates.com

SIGNATURE ASSOCIATES

One Towne Square, Suite 1200

Southfield, MI 48076

www.signatureassociates.com

18808 US-12 Highway – Cement City, Michigan

Land For Sale

60.14
Acres
AVAILABLE

Labeled Aerial



For more information, please contact:

PETER VANDERKAAY

(248) 359 3837

pvanderkaay@signatureassociates.com

PAUL SAAD

(248) 359 0652

psaad@signatureassociates.com

SIGNATURE ASSOCIATES

One Towne Square, Suite 1200

Southfield, MI 48076

www.signatureassociates.com