

28807 REILLY ROAD
LYON TWP., MICHIGAN

INDUSTRIAL FOR SALE
8,800 Square Feet Available



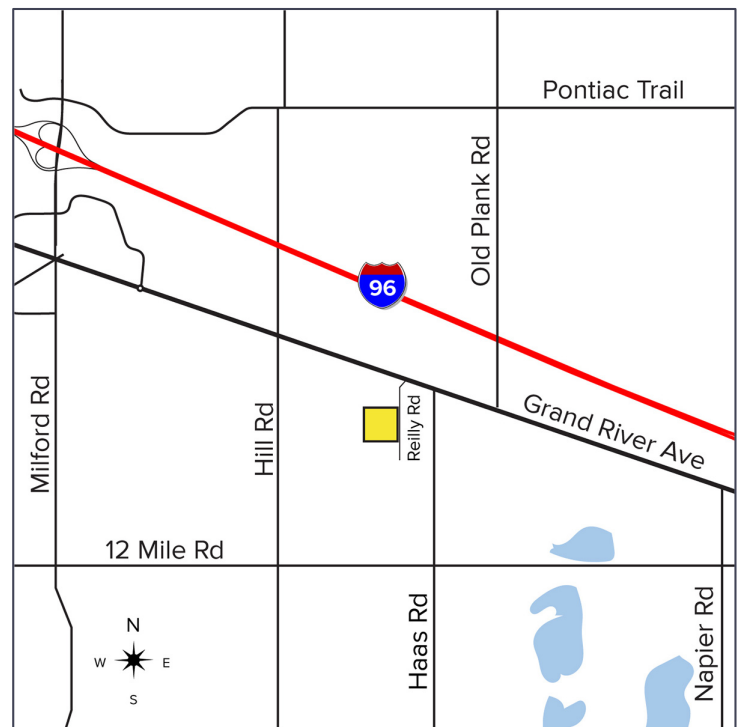
**SIGNATURE
ASSOCIATES**
KNOW SIGNATURE | KNOW RESULTS

RARE STAND ALONE BUILDING



PROPERTY FEATURES

- 8,800 square feet available
- 3,800 square feet of office
- 20' clear height
- (4) 12x14 grade level doors
- Zoned Heavy Industrial
- 2.33 acres
- 600 amps, 240 volts power
- 2 acres of fenced storage
- Beautiful offices – 2-story with elevator
- Load supporting mezzanine
- Sale Price: \$1,185,000 (\$134.66/sq.ft.)



For more information, please contact:

JIM MONTGOMERY
(248) 359 0614

jmontgomery@signatureassociates.com

CHRISTOPHER D'ANGELO
(248) 948 0109

cdangelo@signatureassociates.com

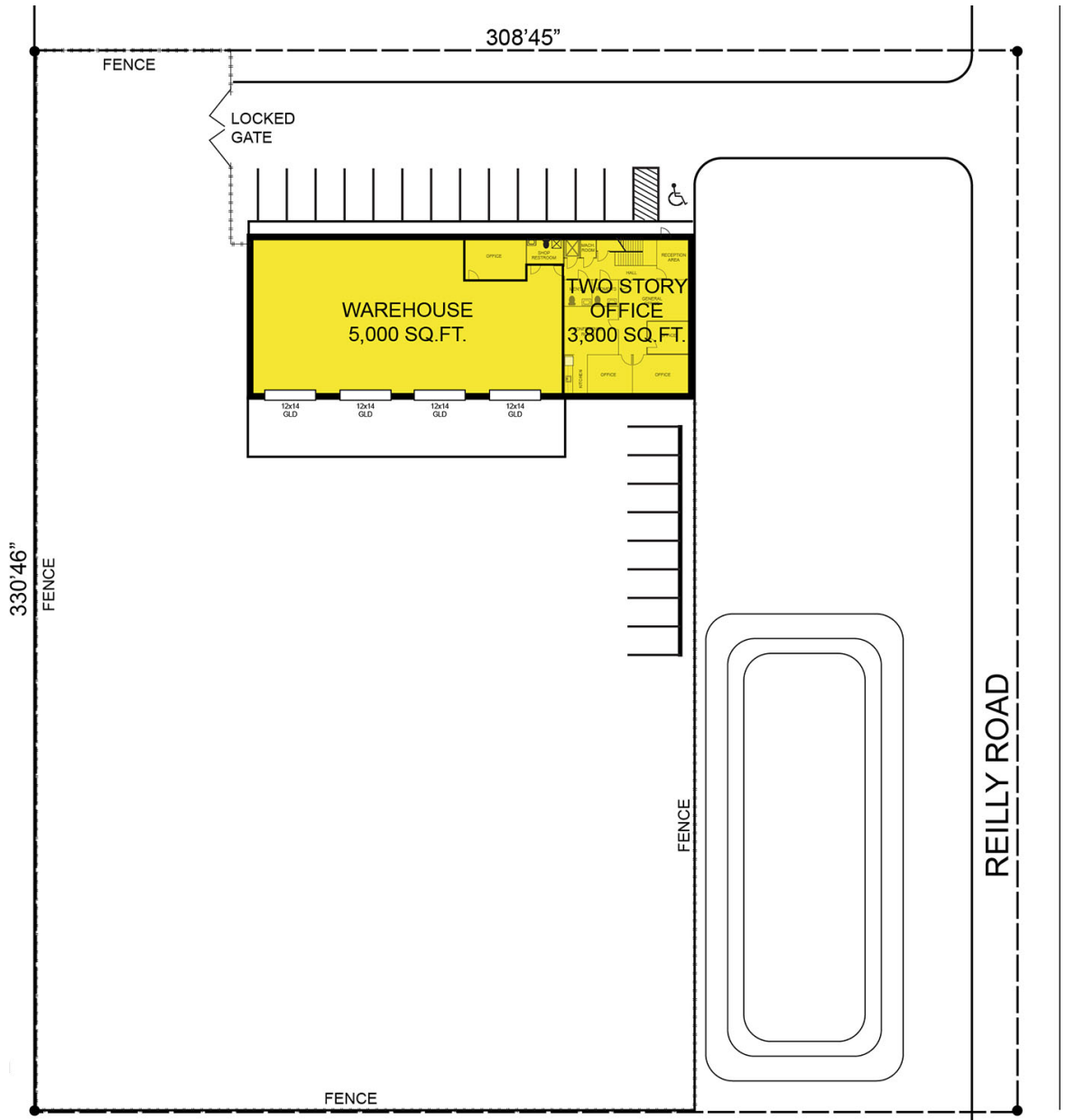
SIGNATURE ASSOCIATES
One Towne Square, Suite 1200
Southfield, MI 48076
www.signatureassociates.com

28807 Reilly Road – Lyon Twp., Michigan

Industrial For Sale

8,800
Square Feet
AVAILABLE

Site Plan



For more information, please contact:

JIM MONTGOMERY

(248) 359 0614

jmontgomery@signatureassociates.com

CHRISTOPHER D'ANGELO

(248) 948 0109

cdangelo@signatureassociates.com

SIGNATURE ASSOCIATES

One Towne Square, Suite 1200

Southfield, MI 48076

www.signatureassociates.com

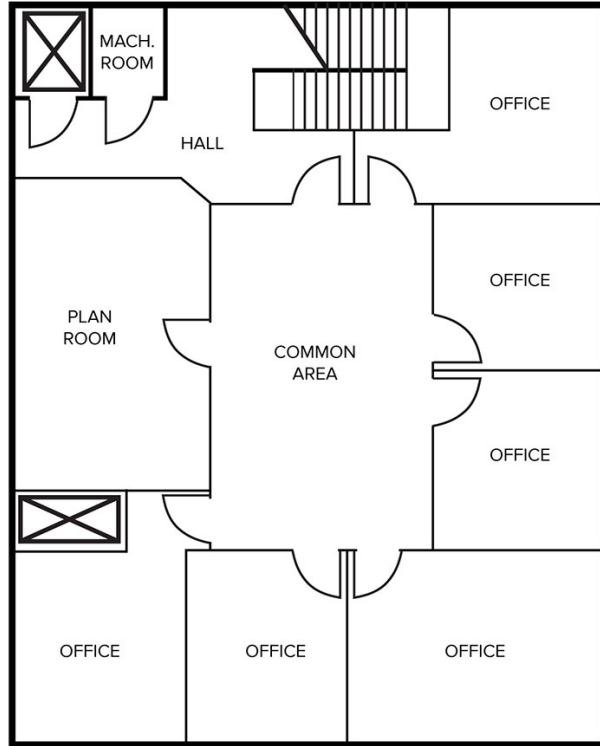
28807 Reilly Road – Lyon Twp., Michigan

Industrial For Sale

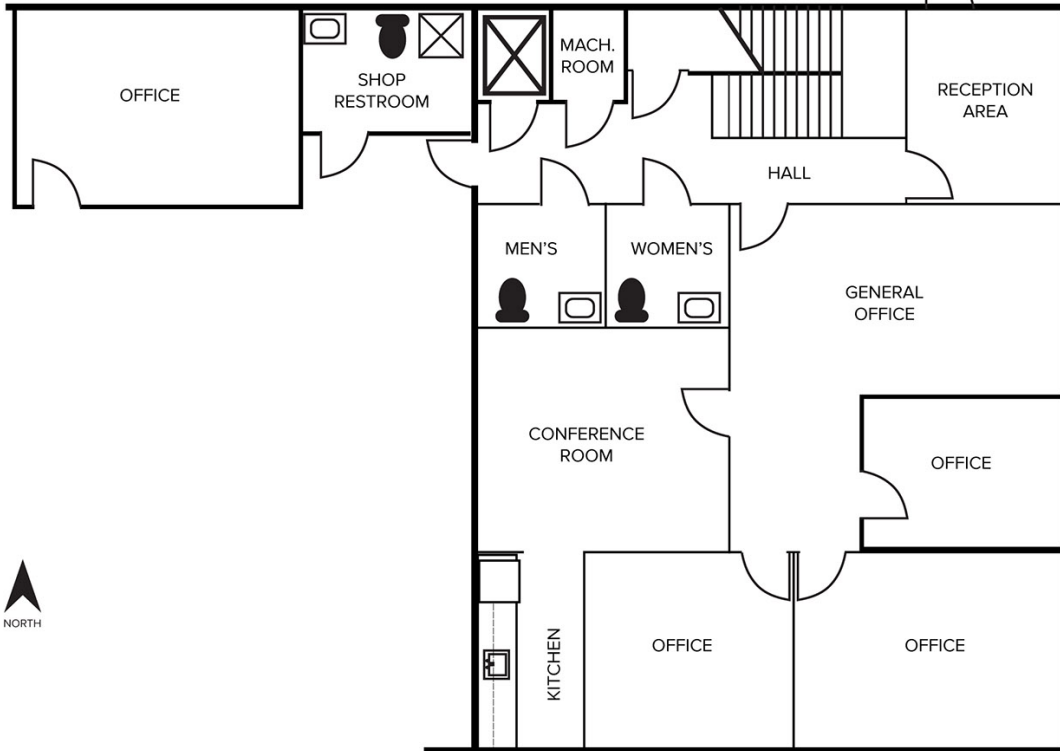
8,800
Square Feet
AVAILABLE

Floor Plan

UPPER LEVEL FLOOR PLAN



MAIN LEVEL FLOOR PLAN



For more information, please contact:

JIM MONTGOMERY

(248) 359 0614

jmontgomery@signatureassociates.com

CHRISTOPHER D'ANGELO

(248) 948 0109

cdangelo@signatureassociates.com

SIGNATURE ASSOCIATES

One Towne Square, Suite 1200

Southfield, MI 48076

www.signatureassociates.com