

LEASE SPACE / RESTAURANT, RETAIL OR OFFICE USE

2507 Stone Station Road

Roebuck, SC 29376

SITE ANALYSIS

COMMERCIAL SALES

DEVELOPMENT

SOON TO BE COMPLETED - RESERVE YOUR SPACE NOW



- 1,000+/- SF UP TO 2,250+/-SF
- New Construction
- Estimated Completion Date September 2017
- Restaurant, Retail or Office Use
- Building Condition: Warm Vanilla Shell
- High Volume Marcos Anticipated 400 Cars Per Week
- Near the Intersection of Highway 221 & 215
- Neighboring Businesses Include: Family Dollar, Food Lion, Marco's Pizza, State Farm & Hardees
- Neighboring Schools Within a 5 Mile Radius: Roebuck Elementary, Anderson Mill Elementary, Gable Middle School, Dawkins & Dorman High School

Lease Rate: \$19/SF Net, Net, Net
Estimated Pass-Through Expenses \$4.50/SF

Guy Harris, Principal

380 S. Pine Street
Spartanburg, SC 29302

Cell 864.316.1318

Office 864.583.1001

Fax 864.585.6188

guyharris@spencerhines.com

www.spencerhines.com



Guy Harris Jr., Agent

380 S. Pine Street
Spartanburg, SC 29302

Cell 864.415.9995

Office 864.583.1001

Fax 864.585.6188

harrisguyjr@spencerhines.com

www.spencerhines.com

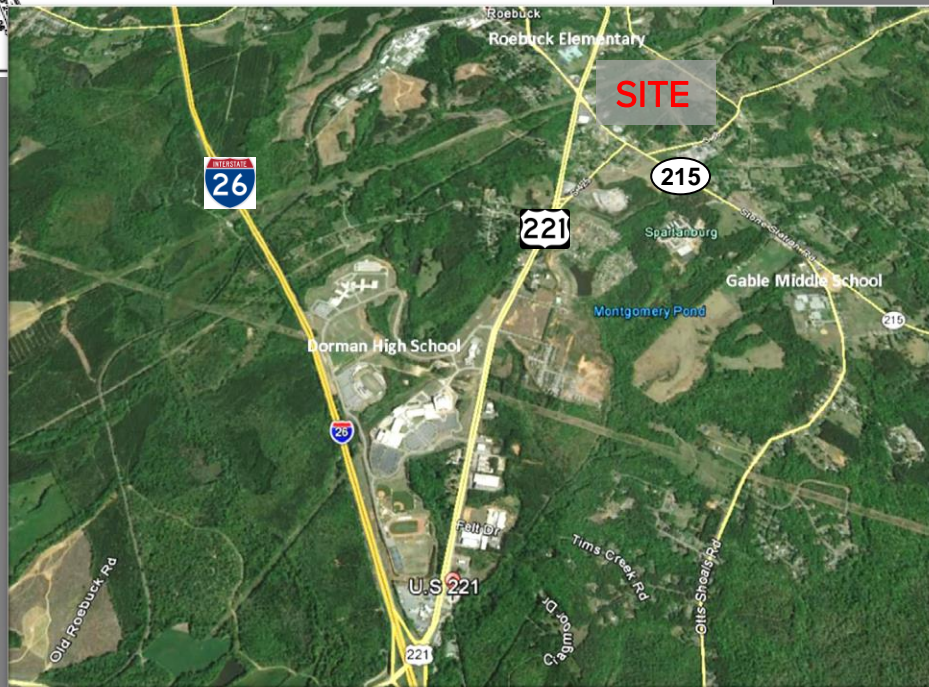
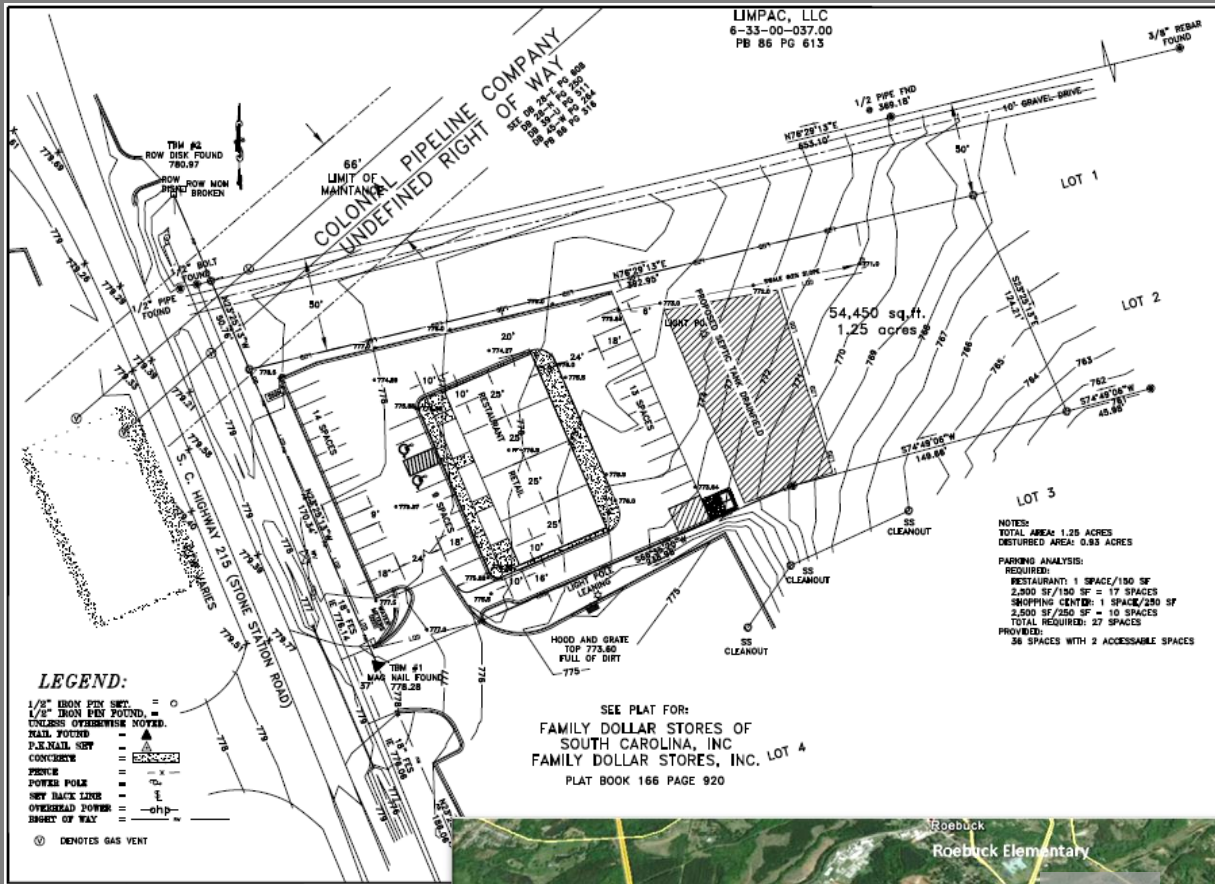
No warranty or representation, expressed or implied, is made to the accuracy of the information contained herein, and the same is submitted subject to errors, omissions, change of price, rental or other conditions, imposed by the principles.

LEASE SPACE / RESTAURANT, RETAIL OR OFFICE USE

2507 Stone Station Road

Roebuck, SC 29376

SITE ANALYSIS
COMMERCIAL SALES
DEVELOPMENT



No warranty or representation, expressed or implied, is made to the accuracy of the information contained herein, and the same is submitted subject to errors, omissions, change of price, rental or other conditions, imposed by the principles.