

PROFESSIONAL OFFICES & LIGHT MEDICAL SPACES AT NE MLK & RUSSELL STREET

RUSHMORE BUILDING - 333 NE Russell Street, Portland, Oregon 97212

FOR LEASE



Located on the corner of NE MLK and Russell Street, this mixed-use building offers prime visibility and accessibility. Above the street level retail spaces are high quality offices of varying sizes, with high ceilings and operable windows. Conveniently located along NE MLK, this property enjoys easy access to I-5, I-84, SE Portland and downtown, all within a few minutes.



northrimpx.com

Matt Schweitzer

matt@northrimpx.com | 503.381.3134

819 SE Morrison St., #110
Portland, OR 97214



Property Details

- Second-floor private offices with operable windows
- Furnished, common waiting area
- 24/7 Building access system with call-box
- On-site patrolled parking for tenants and guests
- Optional basement storage available
- Retail- and restaurant spaces on the ground floor

Location and Demographics

- Close-in location on corner of NE MLK and Russell
- Easy access to I-5 and I-84
- Neighbors include Wonder Ballroom, Nike Outlet Store, Bunk, Toro Bravo, Merkato Ethiopian Market, Bridges Café, and OX
- Average household income: \$65,082
- Population: 23,000
- Median home value: \$405,000

PROFESSIONAL OFFICES & LIGHT MEDICAL SPACES AT NE MLK & RUSSELL STREET

FOR LEASE

northrimpx.com

Matt Schweitzer
matt@northrimpx.com | 503.381.3134

819 SE Morrison St., #110
Portland, OR 97214



Office Suite #202



Furnished Common Area

PROFESSIONAL OFFICES & LIGHT MEDICAL SPACES AT NE MLK & RUSSELL STREET

FOR LEASE

northrimpx.com

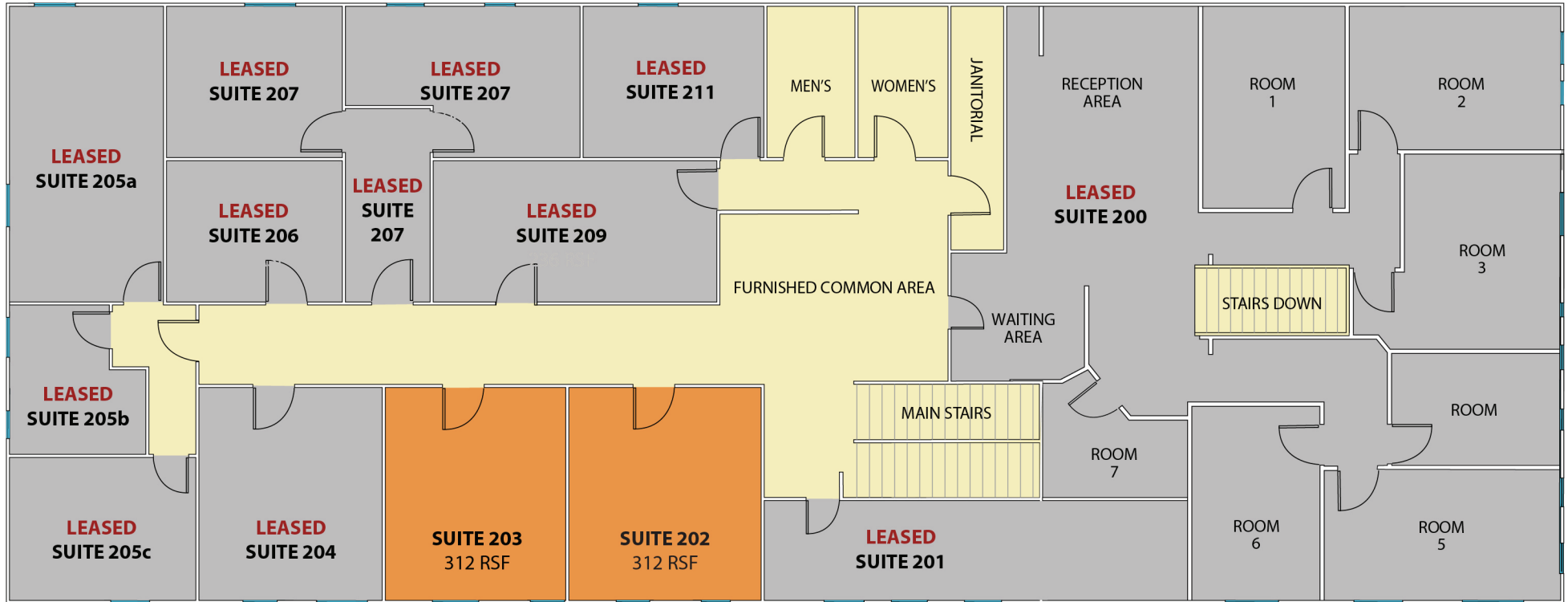
Matt Schweitzer
matt@northrimpx.com | 503.381.3134

819 SE Morrison St., #110
Portland, OR 97214

The information contained in this package has been obtained from sources we believe to be reliable. While we do not doubt its accuracy, we have not verified it and make no guarantee, warranty or representation about it. It is your sole responsibility to independently confirm its accuracy and completeness. Any projections, opinions, assumptions or estimates used are for example only and do not represent the current or future performance of the property. ©2019 North Rim Commercial Properties

7/17/2020

Floor Plan – Second Floor



PROFESSIONAL OFFICES & LIGHT MEDICAL SPACES AT NE MLK & RUSSELL STREET

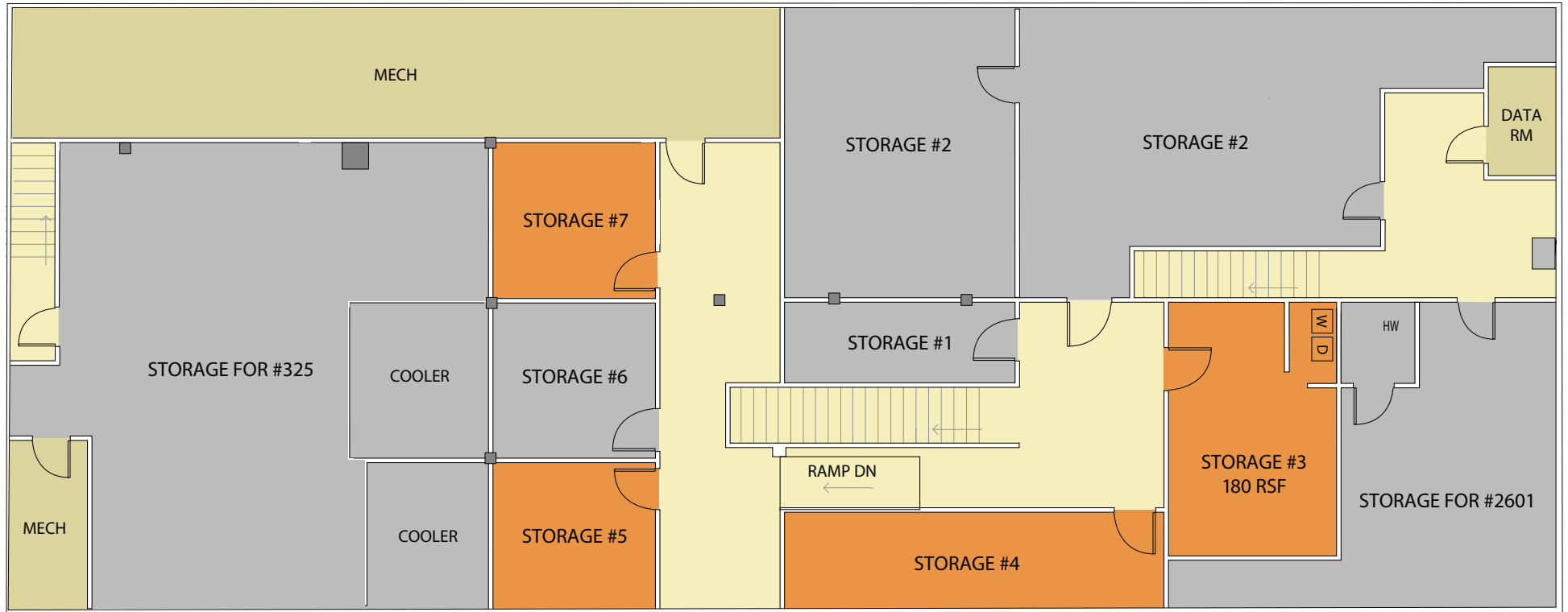
FOR LEASE

northrimpx.com

Matt Schweitzer
matt@northrimpx.com | 503.381.3134

819 SE Morrison St., #110
Portland, OR 97214

Floor Plan – Basement



PROFESSIONAL OFFICES & LIGHT MEDICAL SPACES AT NE MLK & RUSSELL STREET

FOR LEASE

northrimpx.com

Matt Schweitzer
matt@northrimpx.com | 503.381.3134

819 SE Morrison St., #110
Portland, OR 97214

