



**CUSHMAN &
WAKEFIELD**
Commerce

FOR LEASE

4548 South Atherton Dr
Taylorsville, Utah

ATHERTON TECH OFFICE BUILDING



ONE SUITE REMAINING!

Property Highlights

- Building Size: 39,776 SF
- Lease Rate: \$19/RSF, Full Service
- Ample parking
- Great visibility on 4500 South
- Quick access to I-15
- Beautiful two-story atrium
- Common area conference room and break room (free)
- Tenant improvements negotiable



Alison Beddard
Senior Director – Office & Investment
+1 801 303 5568
abeddard@comre.com

Peter Hanlon
Director
+1 801 303 5455
phanlon@comre.com

170 South Main Street
Suite 1600
Salt Lake City, UT 84101
Main +1 801 322 2000
Fax +1 801 322 2040
comre.com

Independently Owned and Operated / A Member of the Cushman & Wakefield Alliance

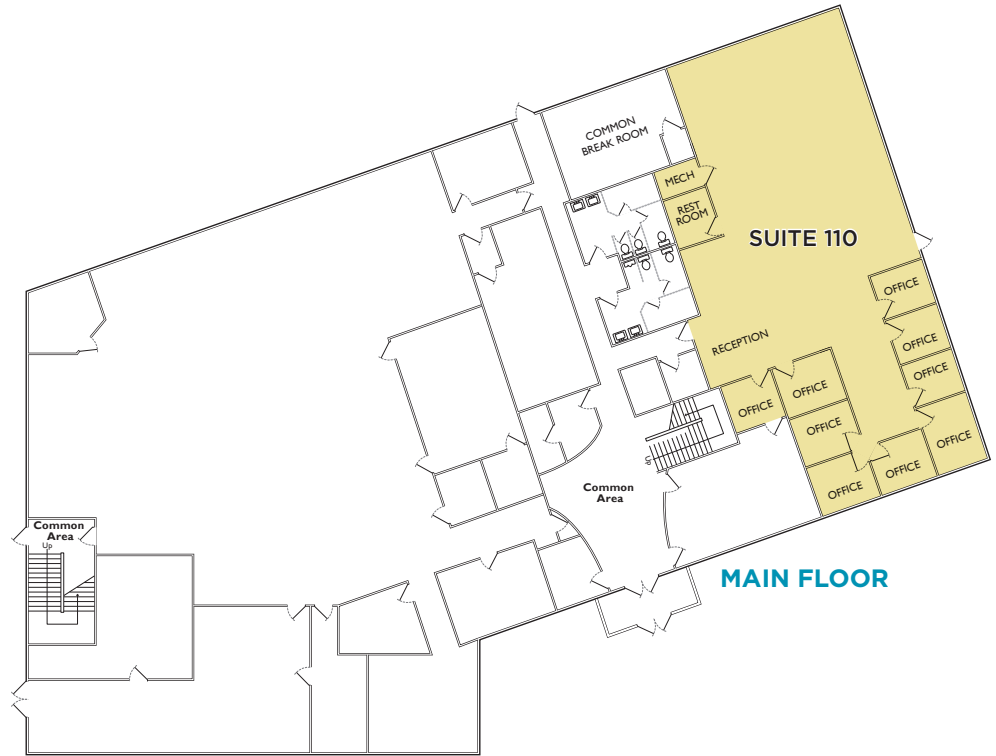
Cushman & Wakefield Copyright 2016. No warranty or representation, express or implied, is made to the accuracy or completeness of the information contained herein, and same is submitted subject to errors, omissions, change of price, rental or other conditions, withdrawal without notice, and to any special listing conditions imposed by the property owner(s). As applicable, we make no representation as to the condition of the property (or properties) in question.
(path: G:\1 - Projects\Hanlon, Peter\1 - Flyers\4548sAthertonDr)



**CUSHMAN &
WAKEFIELD**
Commerce

FOR LEASE

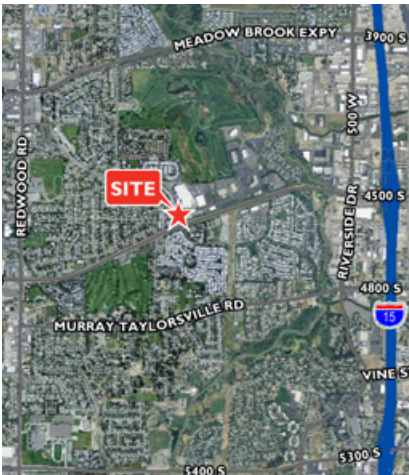
4548 South Atherton Dr
Taylorsville, Utah



Available Suites

110 5,322 RSF

SUITE 110 - READY FOR BUILD OUT!



Alison Beddard
Senior Director - Office & Investment
+1 801 303 5568
abeddard@comre.com

Peter Hanlon
Director
+1 801 303 5455
phanlon@comre.com

170 South Main Street
Suite 1600
Salt Lake City, UT 84101
Main +1 801 322 2000
Fax +1 801 322 2040
comre.com

Independently Owned and Operated / A Member of the Cushman & Wakefield Alliance

Cushman & Wakefield Copyright 2016. No warranty or representation, express or implied, is made to the accuracy or completeness of the information contained herein, and same is submitted subject to errors, omissions, change of price, rental or other conditions, withdrawal without notice, and to any special listing conditions imposed by the property owner(s). As applicable, we make no representation as to the condition of the property (or properties) in question.
(path: G:\1 - Projects\Hanlon, Peter\1 - Flyers\4548sAthertonDr)