

2760 Aurora Avenue, Naperville
Waterside Center II

± 3,000 SF FOR LEASE



SPECIFICATIONS

SIZE: 3,000 SF

ZONING: C

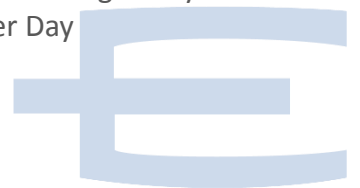
YEAR BUILT: 2006

- 3 Star Retail Community Center
- Menard's Anchored Location Generating 1.5 Million Customers Per Year, 4,100 Per Day
- Excellent Storefront Visibility with Monument Signage
- Daytime Employment of Over 70,000 within 3 Mile Radius
- Center Retailers Include Menard's, Michaels Arts and Craft, and Massage Envy
- 21,854 Vehicles Per Day

Contact:

Ron Weissenhofer
630-712-2573
rweissenhofer@entreccommercial.com

Tim Donohue
847-942-2706
tdonohue@entreccommercial.com



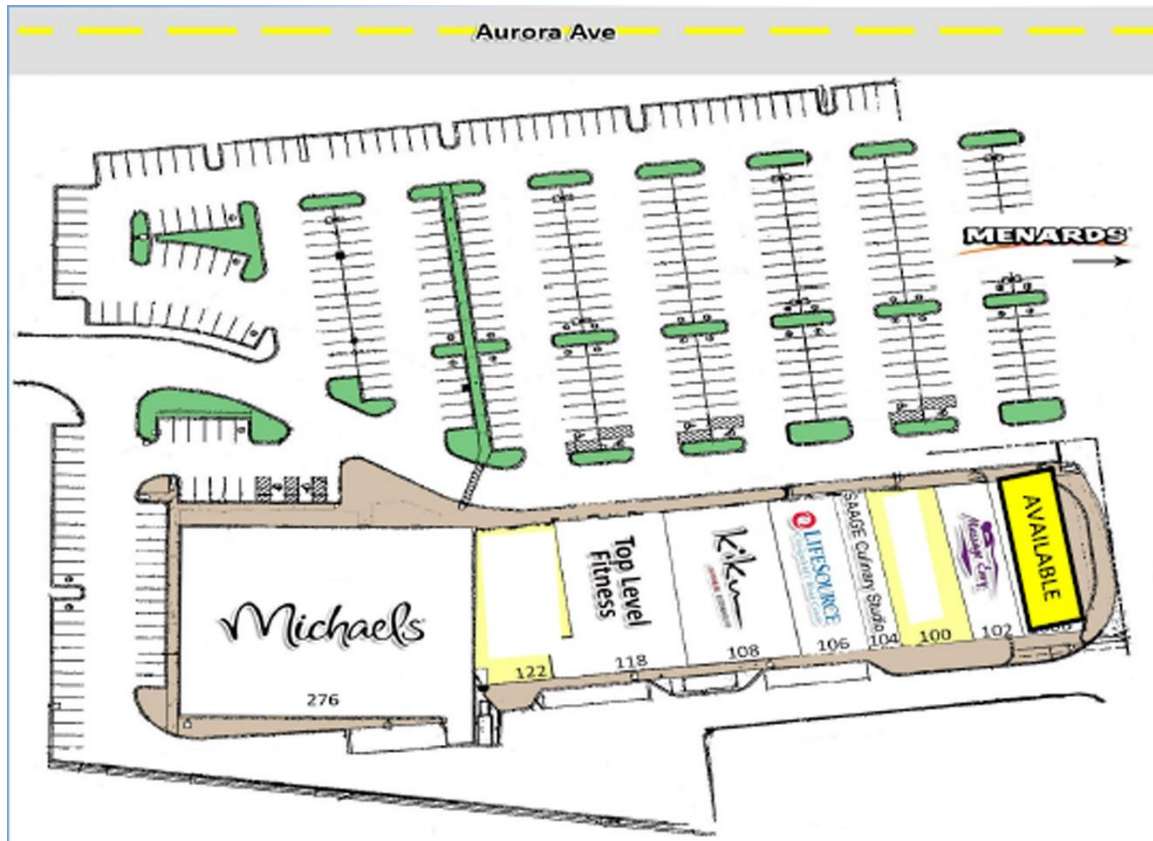
www.entreccommercial.com

3550 Salt Creek Lane, Suite 104, Arlington Heights, IL. 60005

ENTRE
Commercial Realty LLC

2760 Aurora Avenue, Naperville
Waterside Center II

± 3,000 SF FOR LEASE



Contact:

Ron Weissenhofer
630-712-2573
rweissenhofer@entrecmercial.com

Tim Donohue
847-942-2706
tdonohue@entrecmercial.com

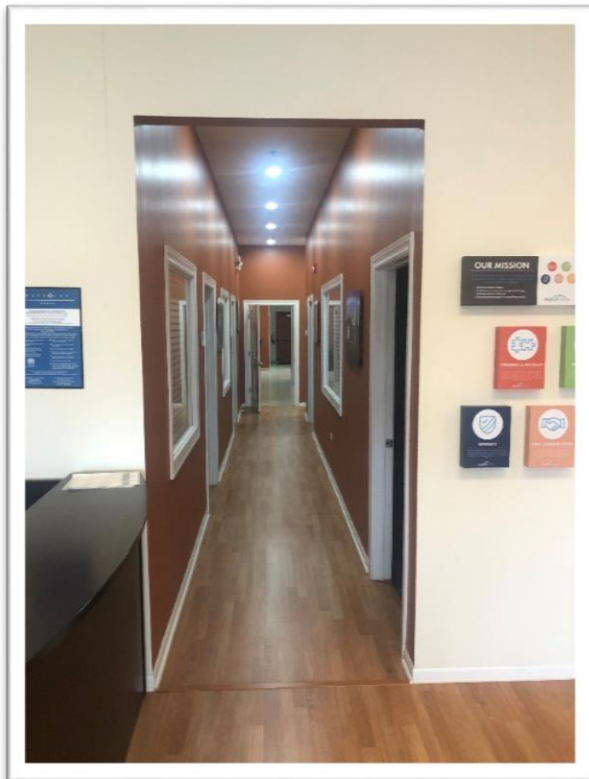
www.entrecmercial.com

3550 Salt Creek Lane, Suite 104, Arlington Heights, IL. 60005

ENTRE
Commercial Realty LLC

2760 Aurora Avenue, Naperville Waterside Center II

± 3,000 SF FOR LEASE



Contact:



Ron Weissenhofer
630-712-2573
rweissenhofer@entrecmercial.com

Tim Donohue
847-942-2706
tdonohue@entrecmercial.com

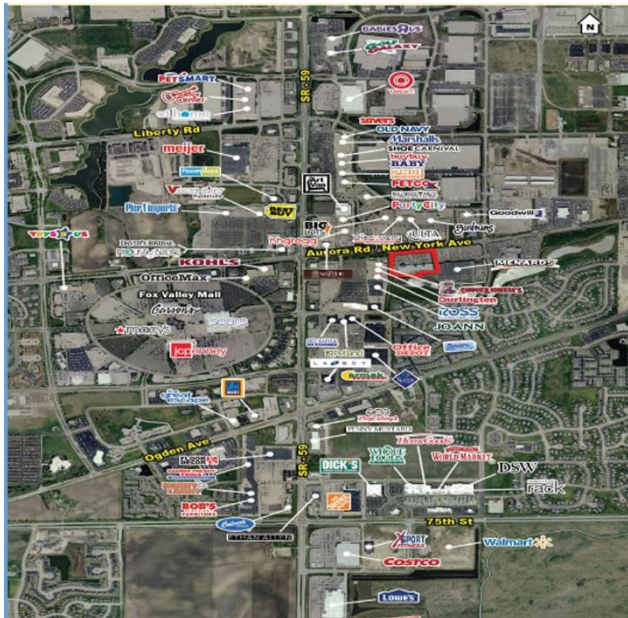
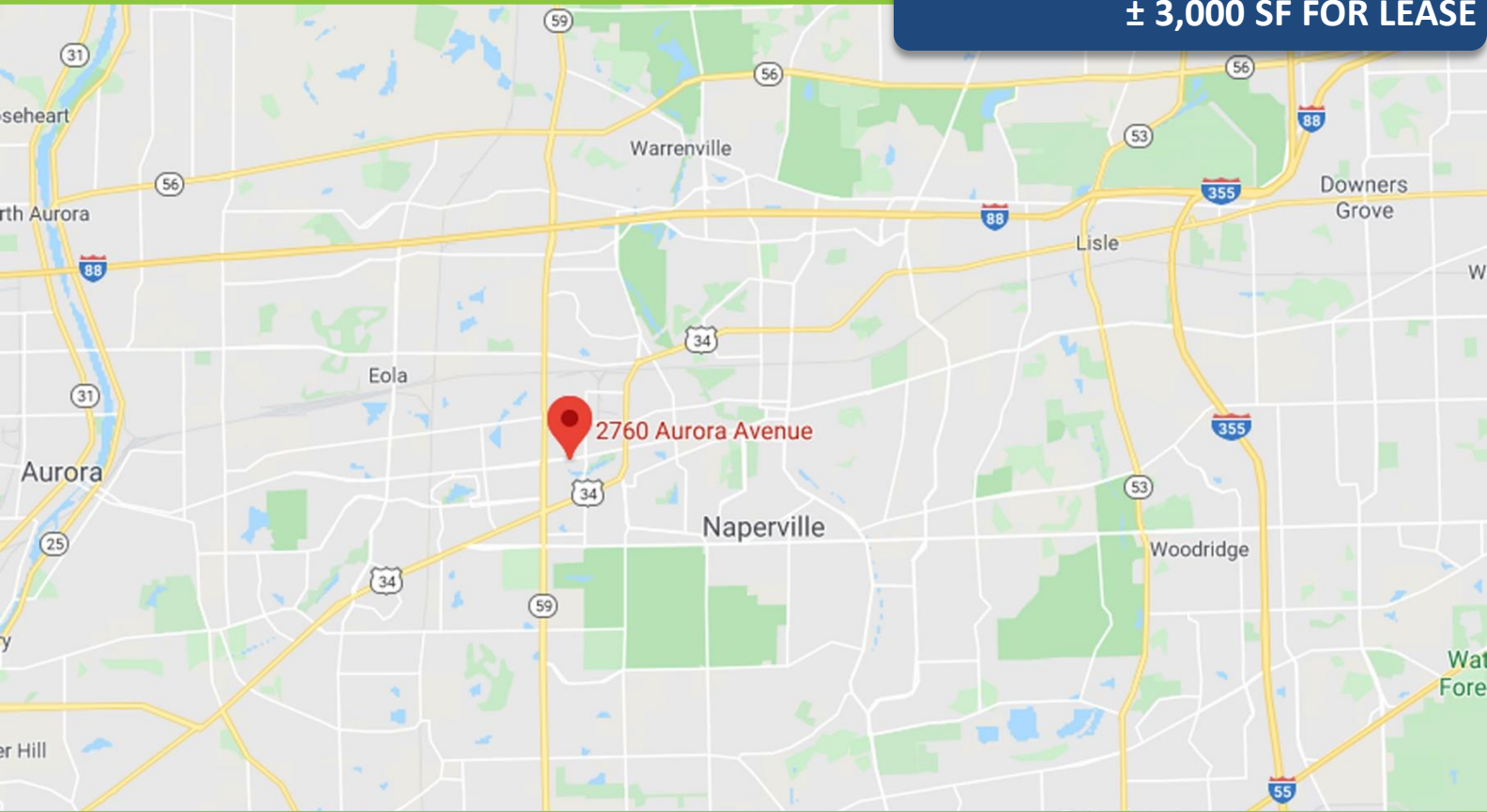
www.entrecmercial.com

3550 Salt Creek Lane, Suite 104, Arlington Heights, IL. 60005

ENTRE
Commercial Realty LLC

2760 Aurora Avenue, Naperville Waterside Center II

± 3,000 SF FOR LEASE



Contact:

Ron Weissenhofer
 630-712-2573
 rweissenhofer@entrecommercial.com

Tim Donohue
 847-942-2706
 tdonohue@entrecommercial.com

www.entrecommercial.com

3550 Salt Creek Lane, Suite 104, Arlington Heights, IL. 60005

