

23 WEST 20TH STREET



CONCEPTUAL RENDERING

SPACE DETAILS

LOCATION

North block between Sixth and Fifth Avenues

APPROXIMATE SIZE

Ground Floor	5,534 SF*
Mezzanine	1,600 SF
Lower Level	5,322 SF**
Total	12,456 SF

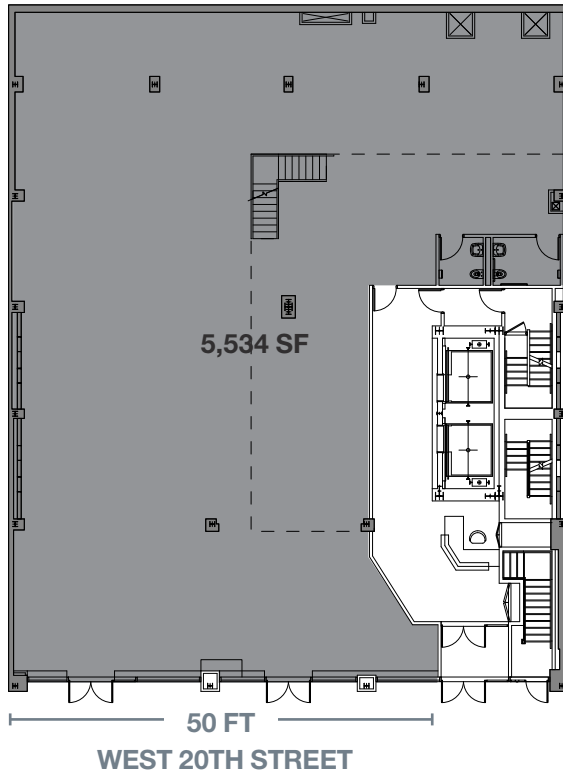
*Divisible

**Separate entrance

CEILING HEIGHT

Ground Floor	19 FT 4 IN
Mezzanine	9 FT 5 IN
Lower Level	8 FT 10 IN

GROUND FLOOR



POSSESSION

Q2 2020

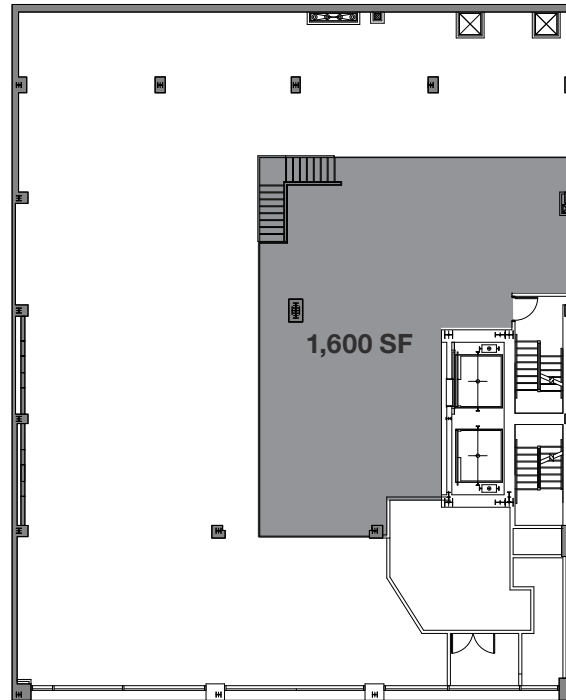
FRONTAGE

50 FT on West 20th Street

SITE STATUS

New Development

MEZZANINE



NEIGHBORS

Gotan, Stretch*d, Pottery Barn, Outdoor Voices, Shadowbox, Nike, The Fitting Room, Burger & Lobster, Limelight Fitness, Flywheel, Alo Yoga and DreamDry

COMMENTS

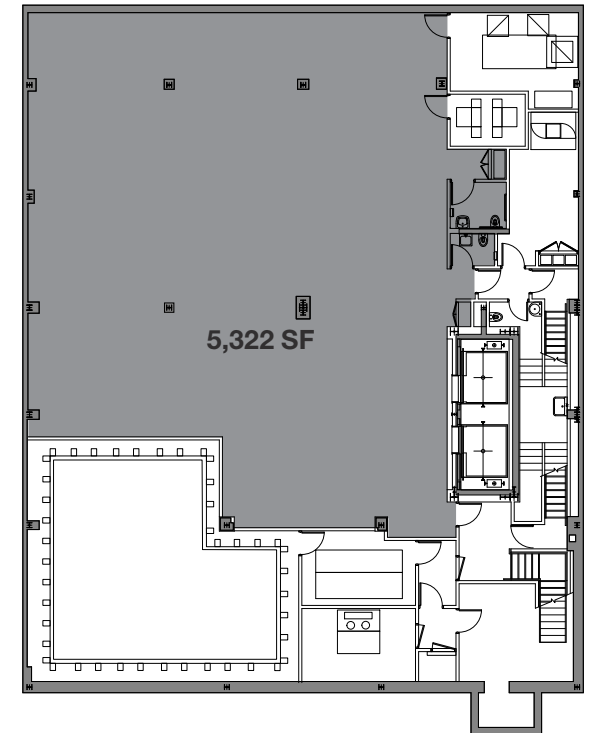
New storefront, bathrooms and HVAC to be delivered

Newly developed retail space in the heart of the Flatiron District

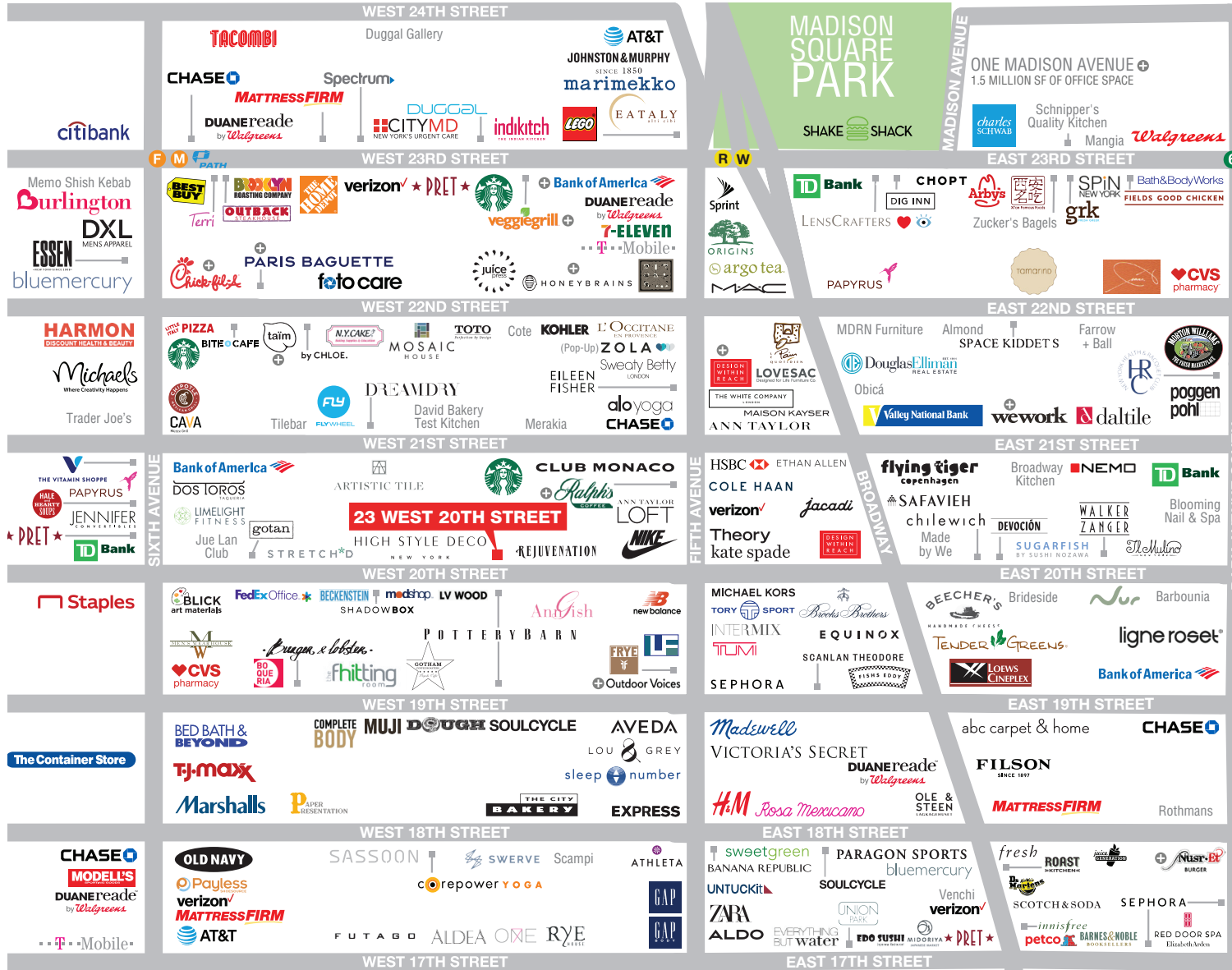
The Lower Level is zoned for retail use and can be leased separately from the Ground Floor with a private entrance at the far east side of the building

Ownership to install two sets of entry doors for flexible Ground Floor divisions

LOWER LEVEL



AREA RETAIL



➔ COMING SOON

CONTACT EXCLUSIVE AGENTS

BENJAMIN BIRNBAUM
212.850.5474
bbirnbaum@ngkf.com

ALEXANDRA TENNENBAUM
212.850.5437
atennenbaum@ngkf.com

ANDREW TAUB
212.372.2011
andrew.taub@ngkf.com



NGKF.COM

© 2019 NEWMARK KNIGHT FRANK RETAIL. The information contained herein has been obtained from sources deemed reliable but has not been verified and no guarantee, warranty or representation, either express or implied, is made with respect to such information. Terms of sale or lease and availability are subject to change or withdrawal without notice.