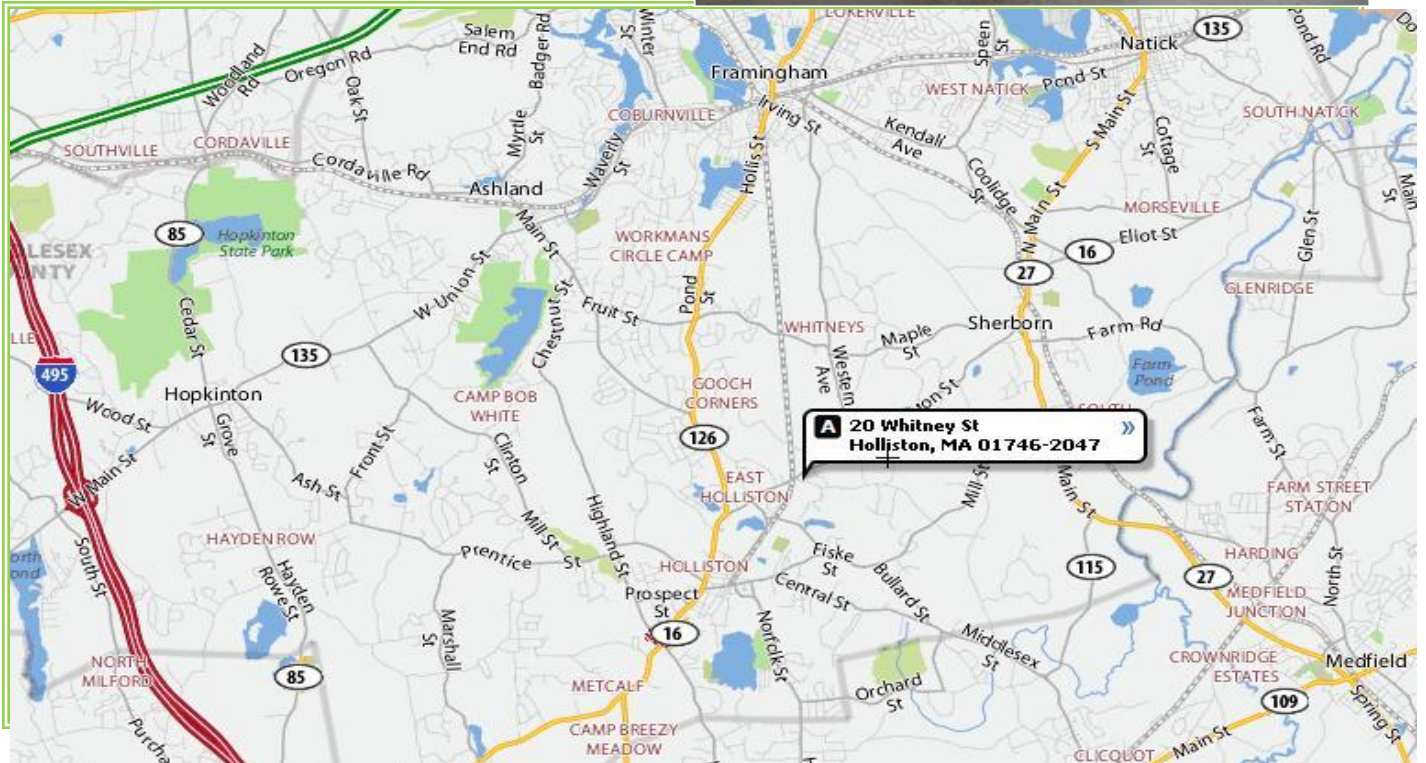




# METROWEST COMMERCIAL R.E.

## 20 WHITNEY ST., UNIT 3 HOLLISTON, MA INDUSTRIAL CONDO FOR LEASE



**Listing Broker: ERIC BRÖSLER**

508-370-0003 – office ~ 508-272-3318 – cell

[eric@metrowestcre.com](mailto:eric@metrowestcre.com) ~ [www.metrowestcre.com](http://www.metrowestcre.com)

**20 WHITNEY ST.  
HOLLISTON,MA**

**Building Specifications:**

**Size:** 60' W x 110' L  
**Type:** Metal Building with Block Veneer  
**Electrical Service:** 110/220  
**Sewer/ Water:** Private Sewer, Public Water  
**Drive-Ins:** 1  
**Floor Slab:** 5"  
**Floor Load:** 500 lbs/SF  
**Height Clearance:** 18'  
**Zoning:** INDUSTRIAL

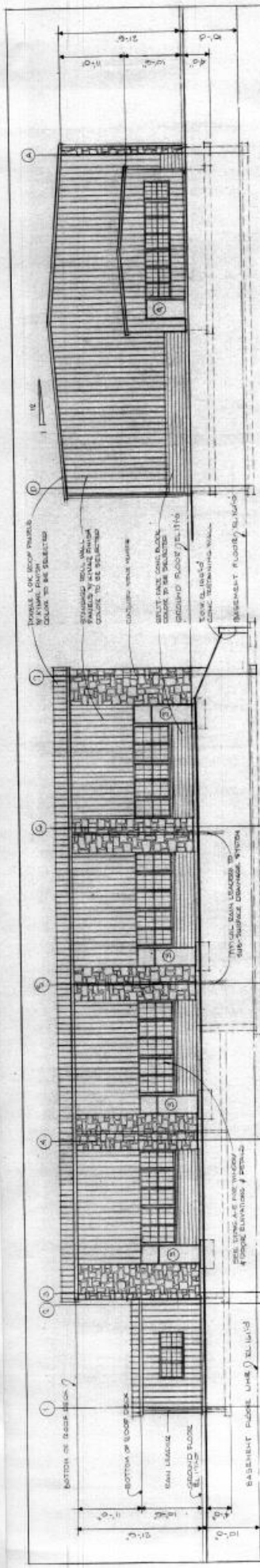
**INDIVIDUAL UNIT SPECS:**

**Available:** 1,560 s.f.  
**Heat:** Ceiling mounted FHA Gas Heater in shop;  
Electric baseboard in office  
**Door Size:** Drive-In: 12' W x 14' H (Chain Rollup)  
**Electrical Service:** 100 AMP; (Separately metered)  
**Office Finish:** 10' W x 12' L  
**Sprinkler System:** Wet  
**Bathrooms:** 2  
**Parking:** 5/ bay  
**Available:** 1/1/2019 or sooner

**LEASE ONLY      \$2,200/month plus utilities**

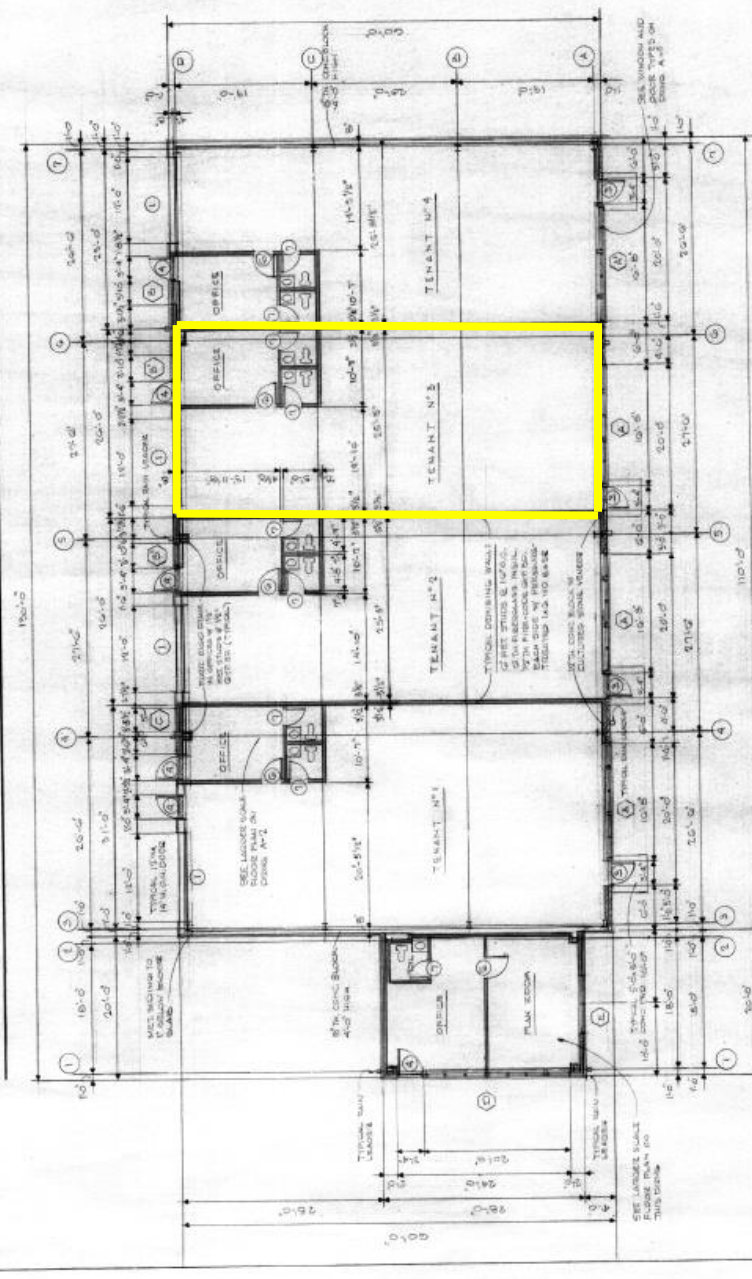
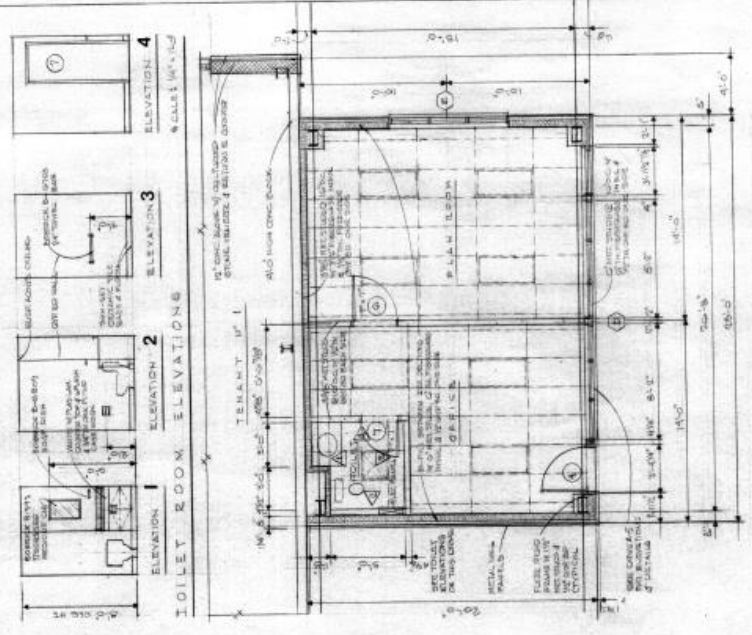
**Listing Broker: ERIC BROSLER**  
**508-370-0003 – office ~ 508-272-3318 – cell**  
**[eric@metrowestcre.com](mailto:eric@metrowestcre.com) ~ [www.metrowestcre.com](http://www.metrowestcre.com)**

*The above information is from sources deemed reliable but cannot be guaranteed to be completely accurate. Prospective Lessees are advised to verify information. MWC RE represents the Lessor. MWC RE does not co-broke with Principals nor recognize representation after the first showing.*



WEST ELEVATION SCALE: 1/8" = 1'-0"

SOUTH ELEVATION FACING WHITNEY ST. SCALE: 1/8" = 1'-0"



SEPARATE OFFICE FLOOR PLAN SCALE: 1/8" = 1'-0"

GROUND FLOOR PLAN SCALE: 1/8" = 1'-0"

SEPARATE OFFICE FLOOR PLAN SCALE: 1/8" = 1'-0"

SEPARATE OFFICE FLOOR PLAN SCALE: 1/8" = 1'-0"