

FOR LEASE | FULLY IMPROVED OFFICE SPACE

1640 Lead Hill Blvd., Roseville, CA 95661



CAROLINE LAFLER, VP

Dir: 916.677.8115

Cell: 916.847.3101

clafler@tricommercial.com

CalDRE #00717367

TRI Commercial Real Estate Services 532 Gibson Drive, Suite 200, Roseville, CA 95678



FOR LEASE FULLY IMPROVED OFFICE

PROPERTY SUMMARY

1640 Lead Hill Blvd.
Roseville, CA



PROPERTY HIGHLIGHTS

- High visibility office building
- Fully Improved Suite
- Building signage available for qualified tenants
- Center of Roseville business district
- Minutes from Interstate 80 and Highway 65
- Walking distance to restaurants and shopping
- Quality construction

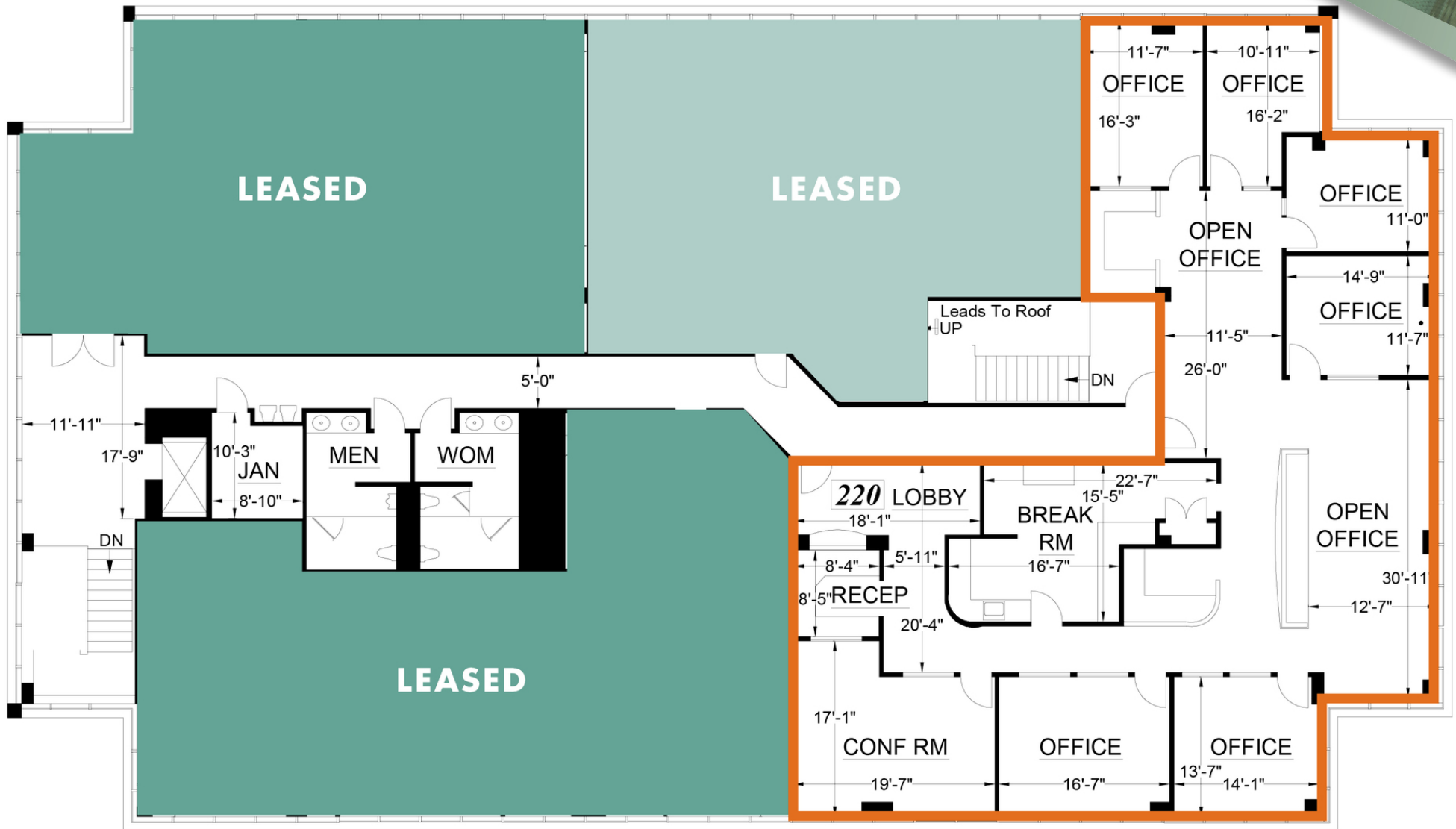
OFFERING SUMMARY

Available RSF:	Suite 220 ±3,946 RSF
Lease Rate:	\$2.15 RSF/month
Lease Type:	Full Service
Free Rent:	One Month Free with every Year of Lease Term

FOR LEASE FULLY IMPROVED OFFICE

2ND FLOOR PLAN

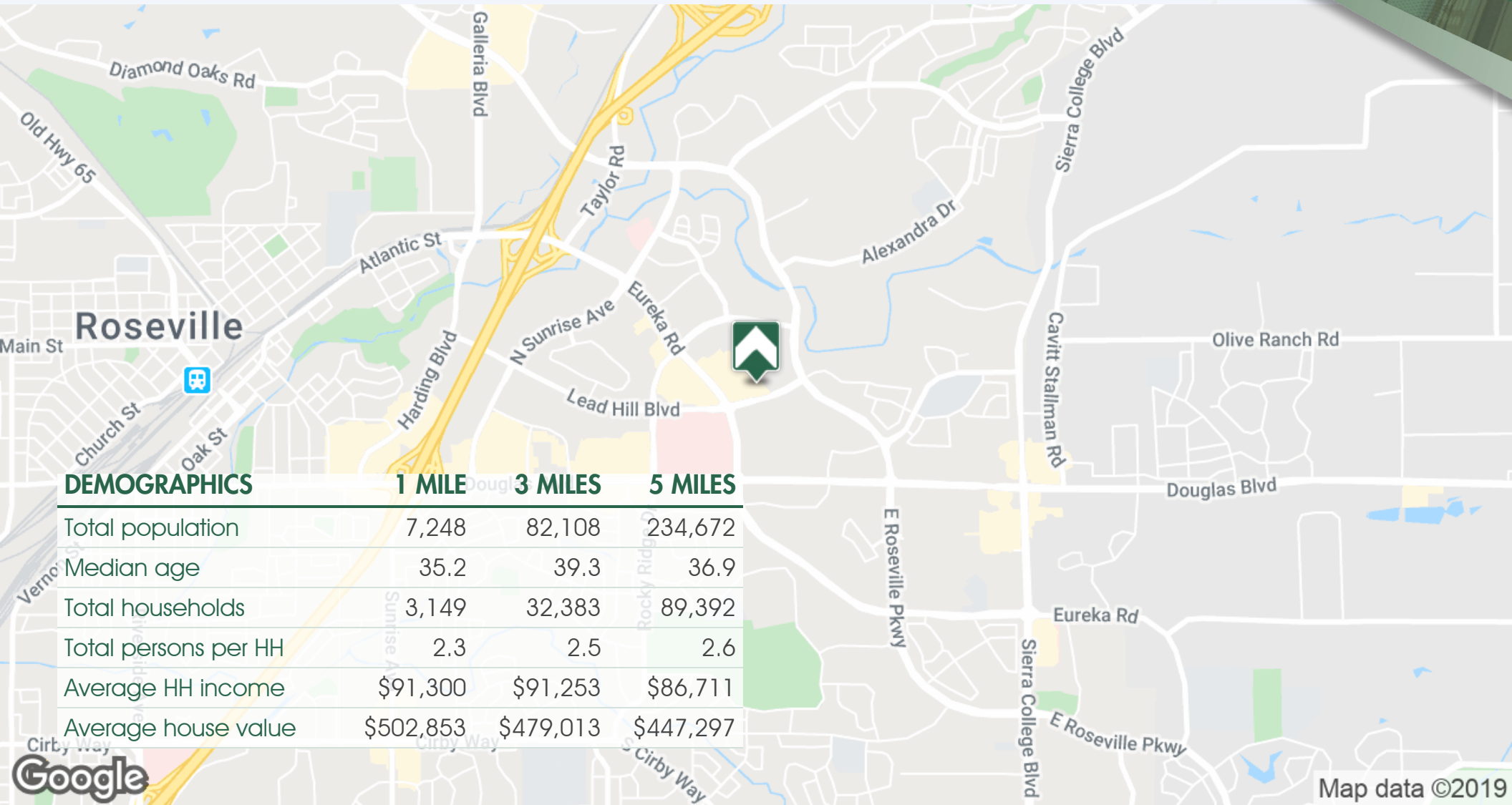
1640 Lead Hill Blvd.
Roseville, CA



FOR LEASE FULLY IMPROVED OFFICE

LOCATION MAPS

1640 Lead Hill Blvd.
Roseville, CA



Map data ©2019