

AMADOR RANCH

**PRICE
REDUCTION!**

FOR SALE

AMADOR
RANCH

Amador County

±506 Acres

PRICE: ~~\$2,200,000~~

PRICE REDUCED!

\$2,000,000

Working cattle ranch with wells and improvements. Commanding views of the Sierra Nevada Mountains. Over 1/2 mile of Rancheria Creek runs through this property. Approximately 100 acres of land could be developed as potential vineyard.



TRI *Outdoor Properties*

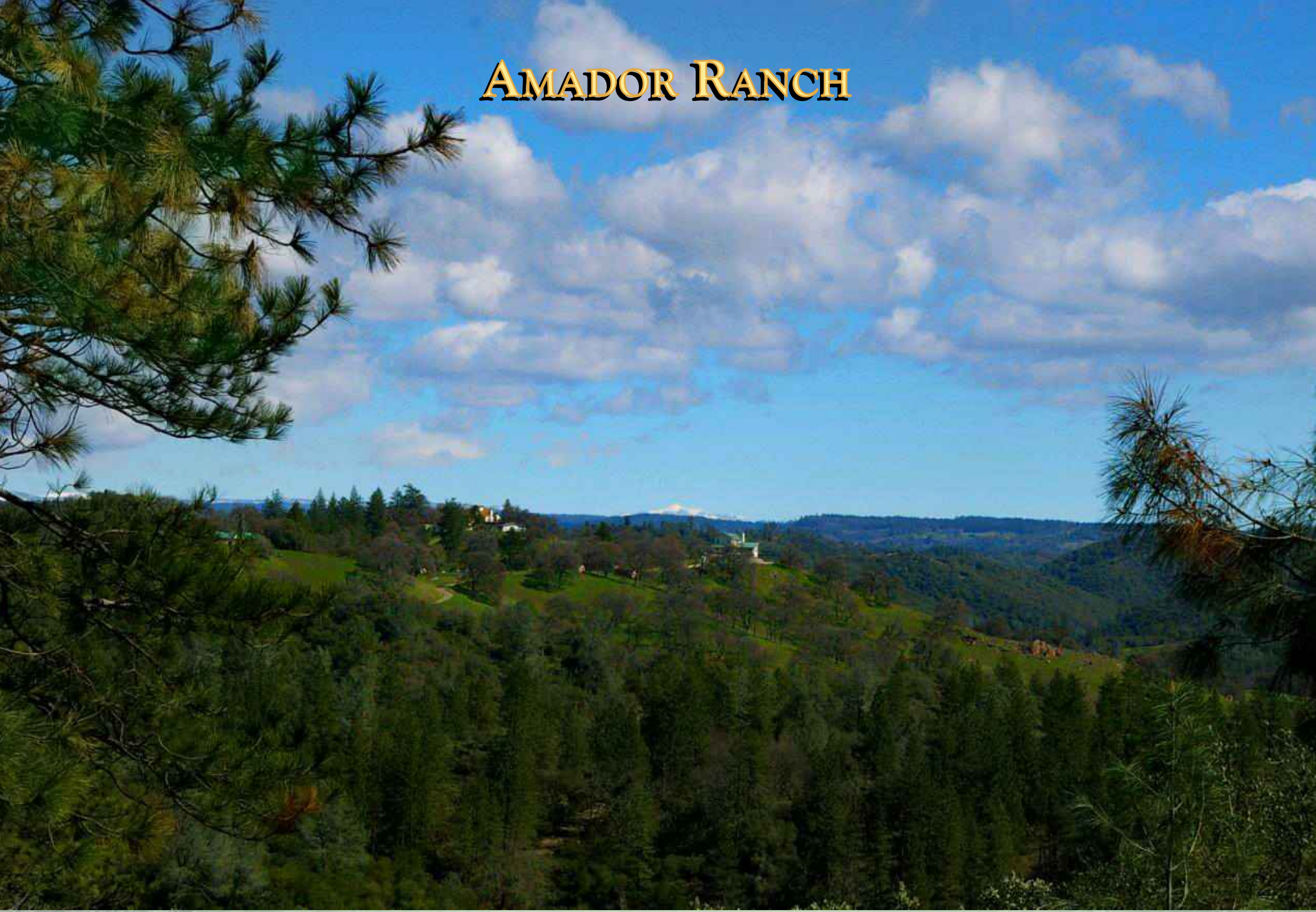
Building Great Relationships Between People and the Outdoors

Participating with

Cabela's TROPHY PROPERTIES™

www.CabelasTrophyProperties.com

AMADOR RANCH



TRI *Outdoor Properties*

Building Great Relationships Between People and the Outdoors

Participating with

Cabela's TROPHY PROPERTIES™

www.CabelasTrophyProperties.com

AMADOR RANCH

Buy the entire +/- 506 acre parcel or
one or more of three parcels of +/- 40
acres each as part of the whole.

TRI *Outdoor Properties*

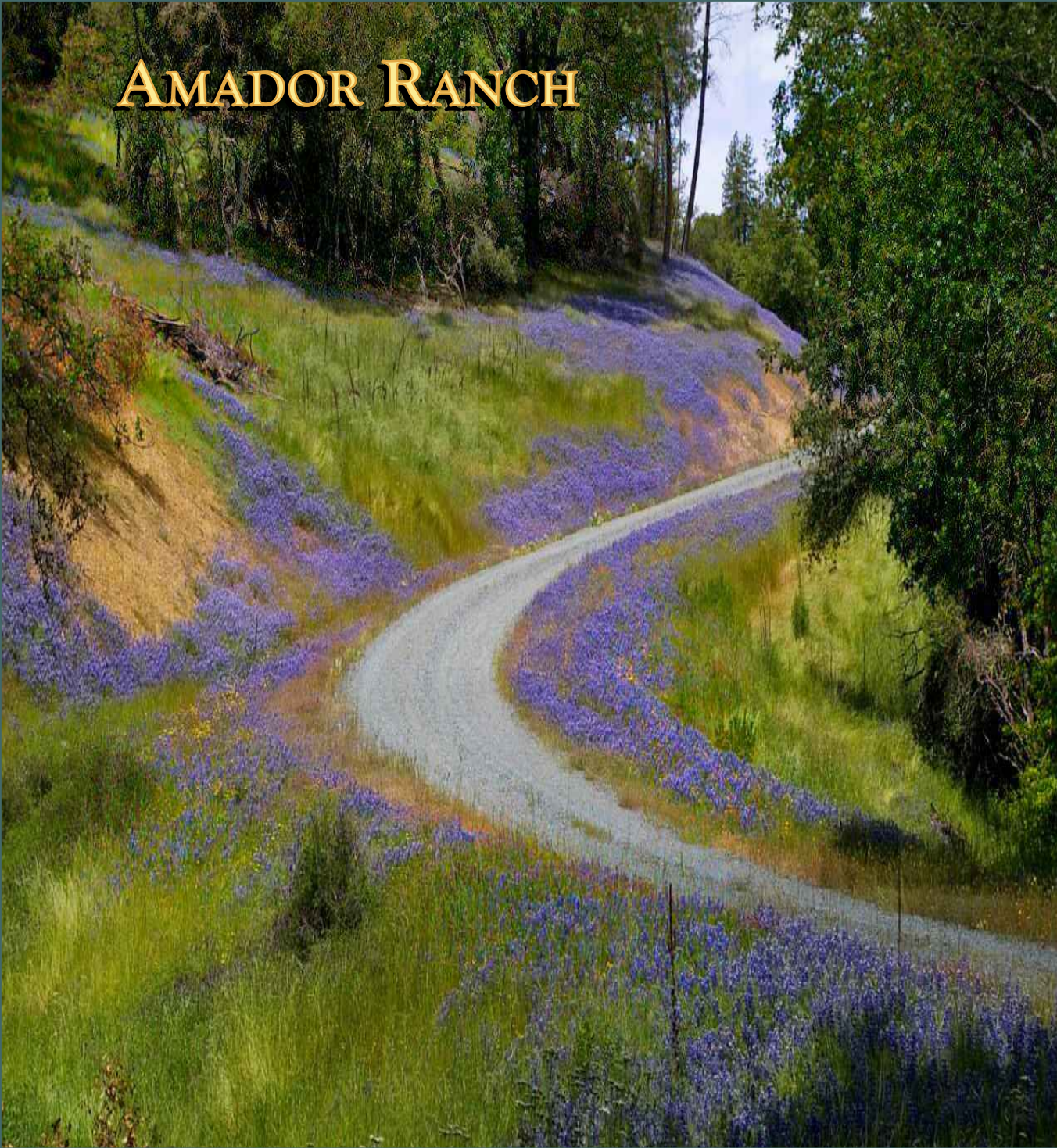
Building Great Relationships Between People and the Outdoors

Participating with

Cabela's TROPHY PROPERTIES™

www.CabelasTrophyProperties.com

AMADOR RANCH



TRI *Outdoor Properties*

Building Great Relationships Between People and the Outdoors

Participating with
Cabela's TROPHY PROPERTIES™
www.CabelasTrophyProperties.com

AMADOR RANCH



TRI *Outdoor Properties*

Building Great Relationships Between People and the Outdoors

Participating with
Cabela's TROPHY PROPERTIES™
www.CabelasTrophyProperties.com

AMADOR RANCH

Scenic Amador County Lots for Sale:

40 acre estate lots located 4 miles east of Drytown in historic Amador County.

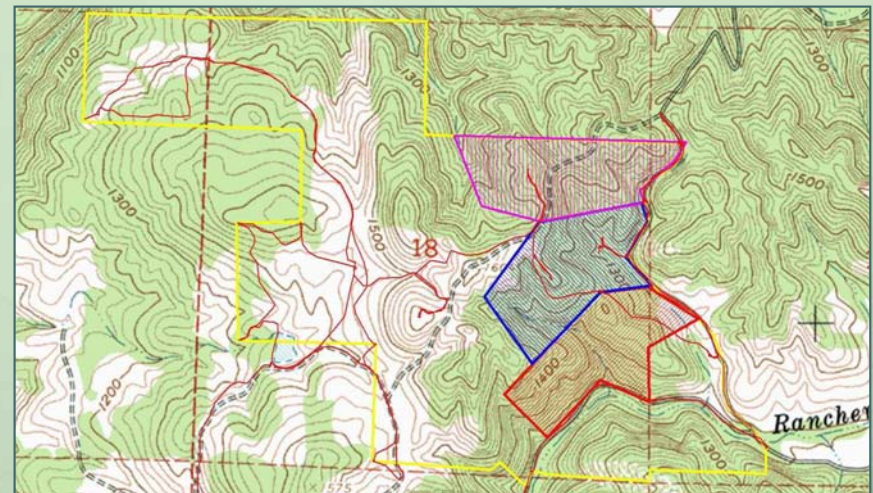
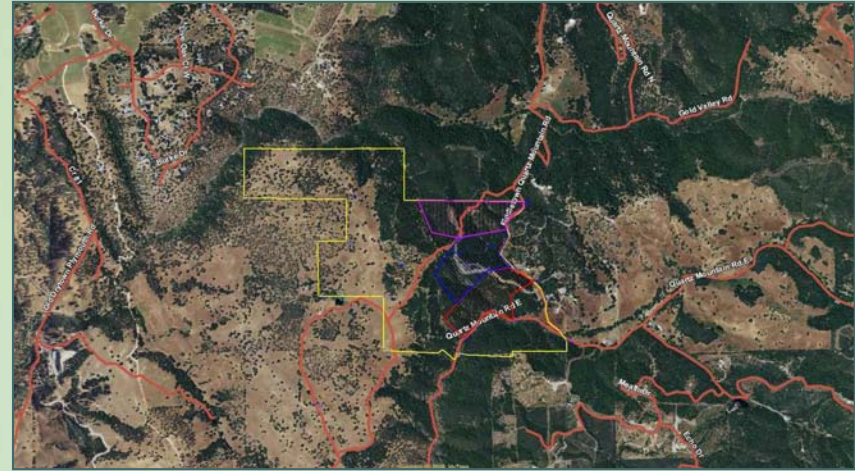
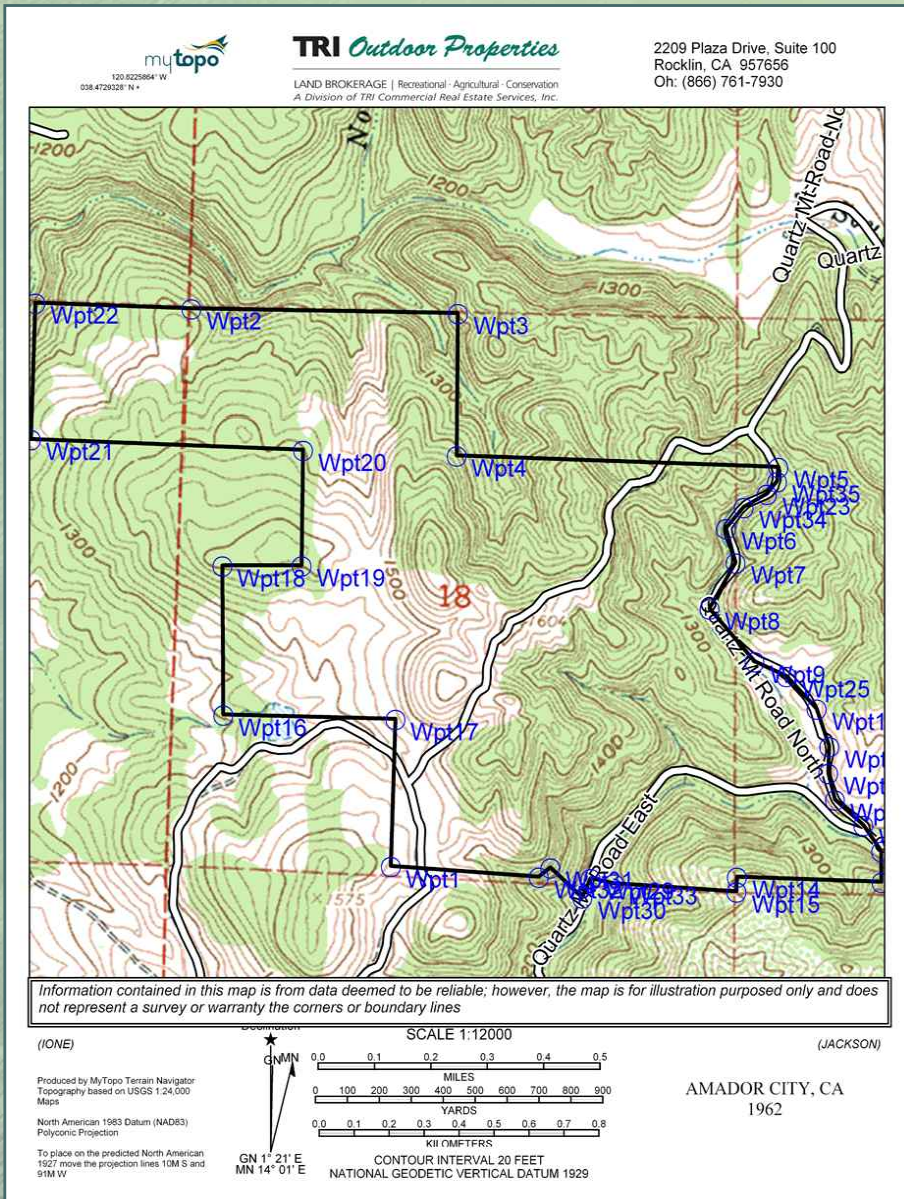
3 lots now available; your choice.

Mountain top 360 degree views of the Sierras and Valley.

Located close to normal amenities yet rural in setting.

Above the fog and below the snowline.

These lots offer an endless supply of recreational enjoyment.



TRI Outdoor Properties

Building Great Relationships Between People and the Outdoors

Participating with

Cabela's TROPHY PROPERTIES™

www.CabelasTrophyProperties.com

AMADOR RANCH

TRI Outdoor Properties

LAND BROKERAGE | Recreational · Agricultural · Conservation
A Division of TRI Commercial Real Estate Services, Inc.

Contact:

Mike Kuppenbender, SIOR, CCIM, ALC
DRE: 00811112

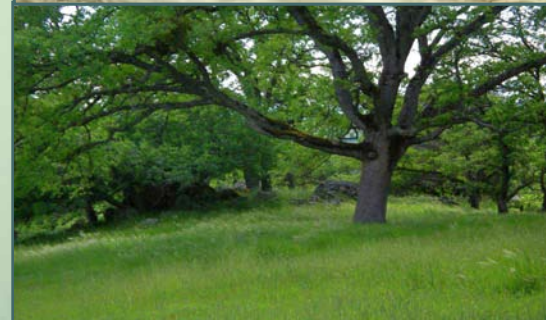
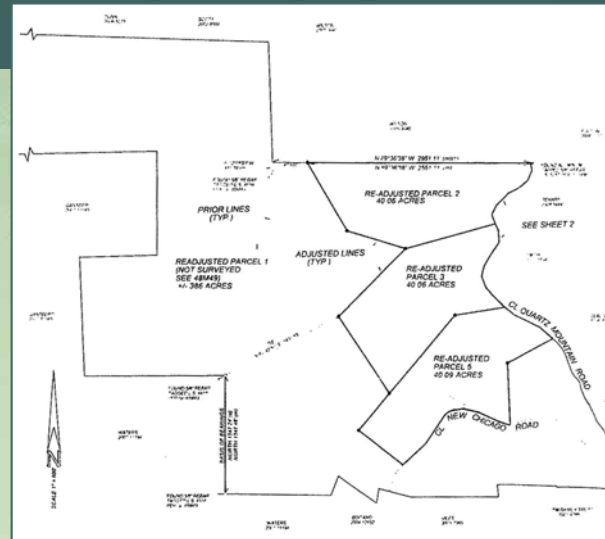
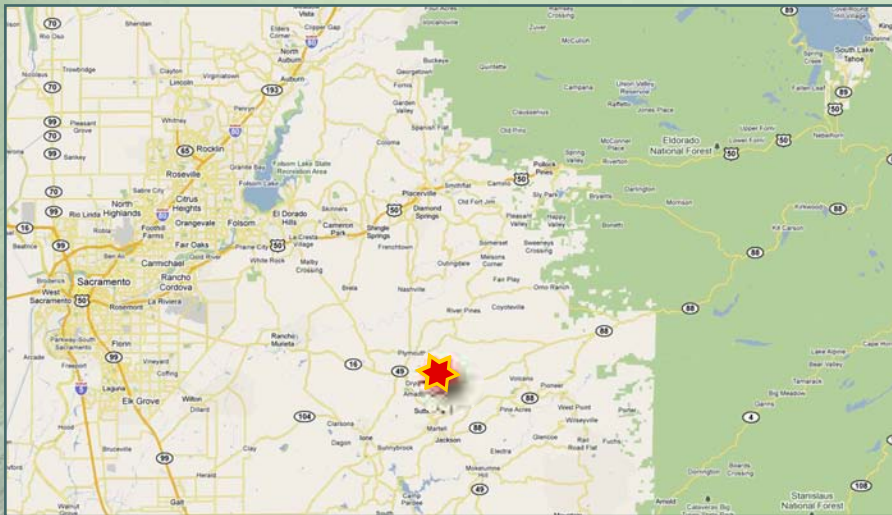
Olen Zirkle
DRE: 01190000

Tel ^ 866.761.7930

Fax ^ 916.960.5799

2209 Plaza Drive, Suite 100
Rocklin, CA 95765

www.trioutdoorproperties.com



TRI Outdoor Properties

Building Great Relationships Between People and the Outdoors

The information in this document was obtained from sources we deem reliable; however, no warranty or representation, expressed or implied, is made as to the accuracy of the information contained herein. All information should be verified by the recipient prior to purchase or execution of legal documents.

Participating with

Cabela's TROPHY PROPERTIES™

www.CabelasTrophyProperties.com