

FOR LEASE



VISIT OUR WEBSITE

IAC COMMERCE CENTER-SEATAC

20529 24th AVE SOUTH
SEATAC, WA 98198

341,938 SF AVAILABLE

State of the Art
Industrial Building



BUILDING FACTS & SITE PLAN



Building size: 457,211 SF
Available: 111,971 - 341,938 SF
Flexible Space Configurations



Build-to-suit office



36' Clear height



130'-185' Truck courts



68 Dock high doors
2 Drive-in doors



40 Trailer parking stalls



205 Car parking stalls



ESFR Sprinkler system



Power 3,000 amps



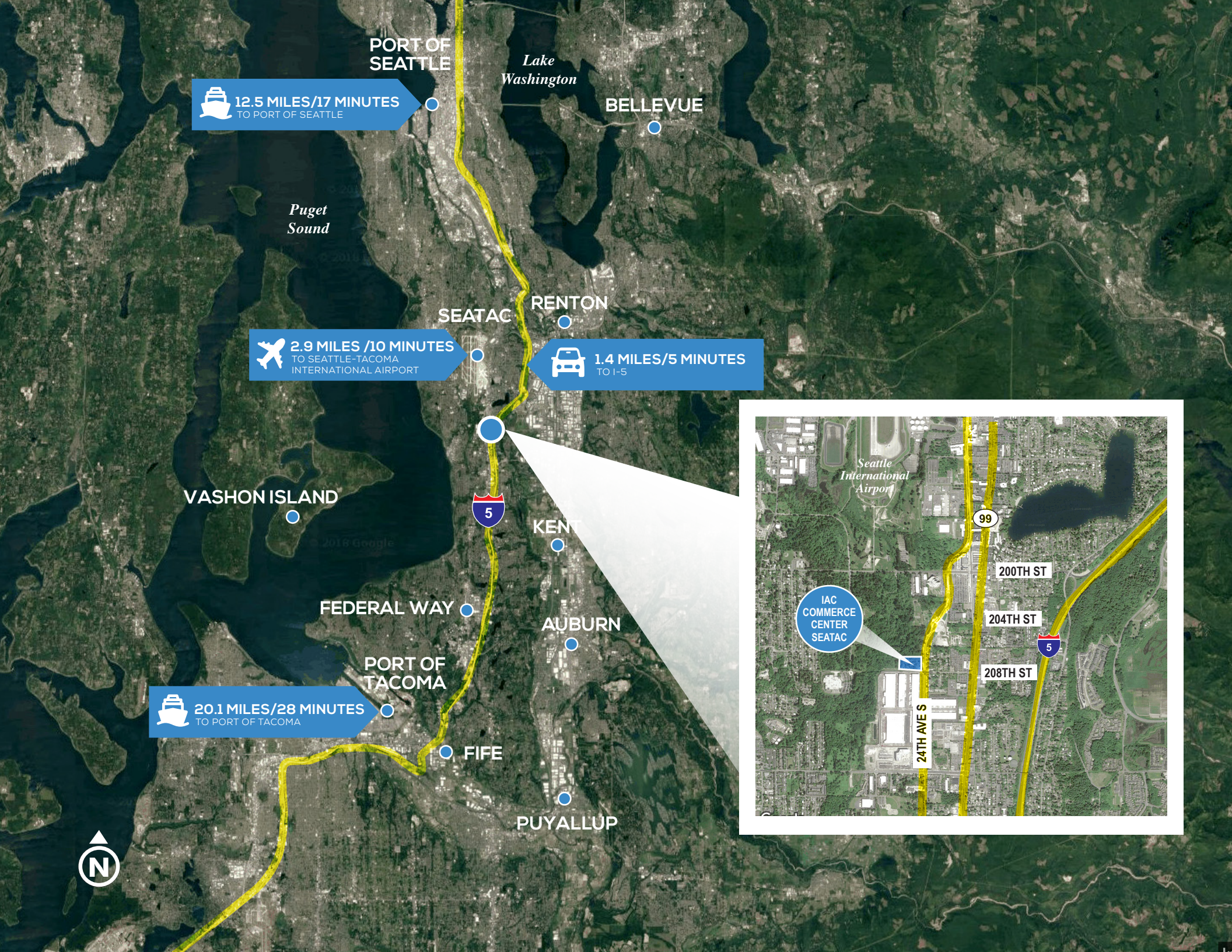
Reinforced 7" Slab



Lighting to suit



Lease rates: subject to offer



PORT OF SEATTLE

Lake Washington

BELLEVUE



12.5 MILES/17 MINUTES
TO PORT OF SEATTLE

Puget Sound

SEATAC

RENTON



2.9 MILES /10 MINUTES
TO SEATTLE-TACOMA
INTERNATIONAL AIRPORT



1.4 MILES/5 MINUTES
TO I-5

VASHON ISLAND



KENT

FEDERAL WAY

AUBURN



20.1 MILES/28 MINUTES
TO PORT OF TACOMA

PORT OF TACOMA

FIFE

PUYALLUP



IAC
COMMERCE
CENTER
SEATAC



IAC COMMERCE CENTER-SEATAC

SEATAC, WA

FOR MORE INFORMATION PLEASE CONTACT:

ANDREW STARK

Senior Vice President
+1 206 442 2746
andrew.stark@cbre.com



VISIT OUR WEBSITE

ANDREW HITCHCOCK

Senior Vice President
+1 206 442 2719
andrew.hitchcock@cbre.com

ZAC SNEDEKER

Vice President
+1 206 442 2709
zac.snedeker@cbre.com

CBRE, INC.

1420 Fifth Avenue, 17th Floor
Seattle, WA 98101
cbre.us/seattle

© 2019 CBRE, Inc. All rights reserved. This information has been obtained from sources believed reliable, but has not been verified for accuracy or completeness.

Any projections, opinions, or estimates are subject to uncertainty. The information may not represent the current or future performance of the property. You and your advisors should conduct a careful, independent investigation of the property and verify all information. Any reliance on this information is solely at your own risk. CBRE and the CBRE logo are service marks of CBRE, Inc. and/or its affiliated or related companies in the United States and other countries. All other marks displayed on this document are the property of their respective owners.

Photos herein are the property of their respective owners and use of these images without the express written consent of the owner is prohibited. PMStudio_November 2019

