



BRIDGEPOINTE
OFFICE PARK

1500-1510 FASHION ISLAND BLVD. SAN MATEO



JON MACKEY
Senior Managing Director
408.987.4129
jmackey@newmarkccarey.com
CA RE License #01362376

GRAHAM WOODALL
Managing Director
650.358.5274
gwoodall@newmarkccarey.com
CA RE License #01396445

JOHN KRAFT
Managing Director
650.358.5277
jkraft@newmarkccarey.com
CA RE License #01787698

PROJECT HIGHLIGHTS

AVAILABILITIES

1500 FASHION ISLAND BOULEVARD	
SUITE #	SF AVAILABLE
100	±10,558 SF
103	±1,988 SF
201	±10,140 SF
1510 FASHION ISLAND BOULEVARD	
SUITE #	SF AVAILABLE
104	±3,572 SF
250	±2,202 SF
260	±2,915 SF
300	±7,628 SF
350	±5,281 SF

Bridgepointe Office Park is a ±130,000 square foot office park located adjacent to Bridgepointe Shopping Center in San Mateo. The park lies in the heart of the 92/101 Corridor which provides immediate freeway access to San Francisco, Silicon Valley and the East Bay via the San Mateo Bridge. This convenient mid-Peninsula location enables tenants to attract top tier personnel throughout the Bay Area.



**GREAT
VISIBILITY**



**WALKING DISTANCE
TO CALTRAIN SHUTTLE**



**RESTAURANTS
NEARBY**



**SHOWERS
ON-SITE**



**WIFI AVAILABLE
IN COMMON AREAS**




**MOVE IN READY
SUITES**






BRIDGEPOINTE
OFFICE PARK



 MARKET READY SPACES



BRIDGEPOINTE
OFFICE PARK



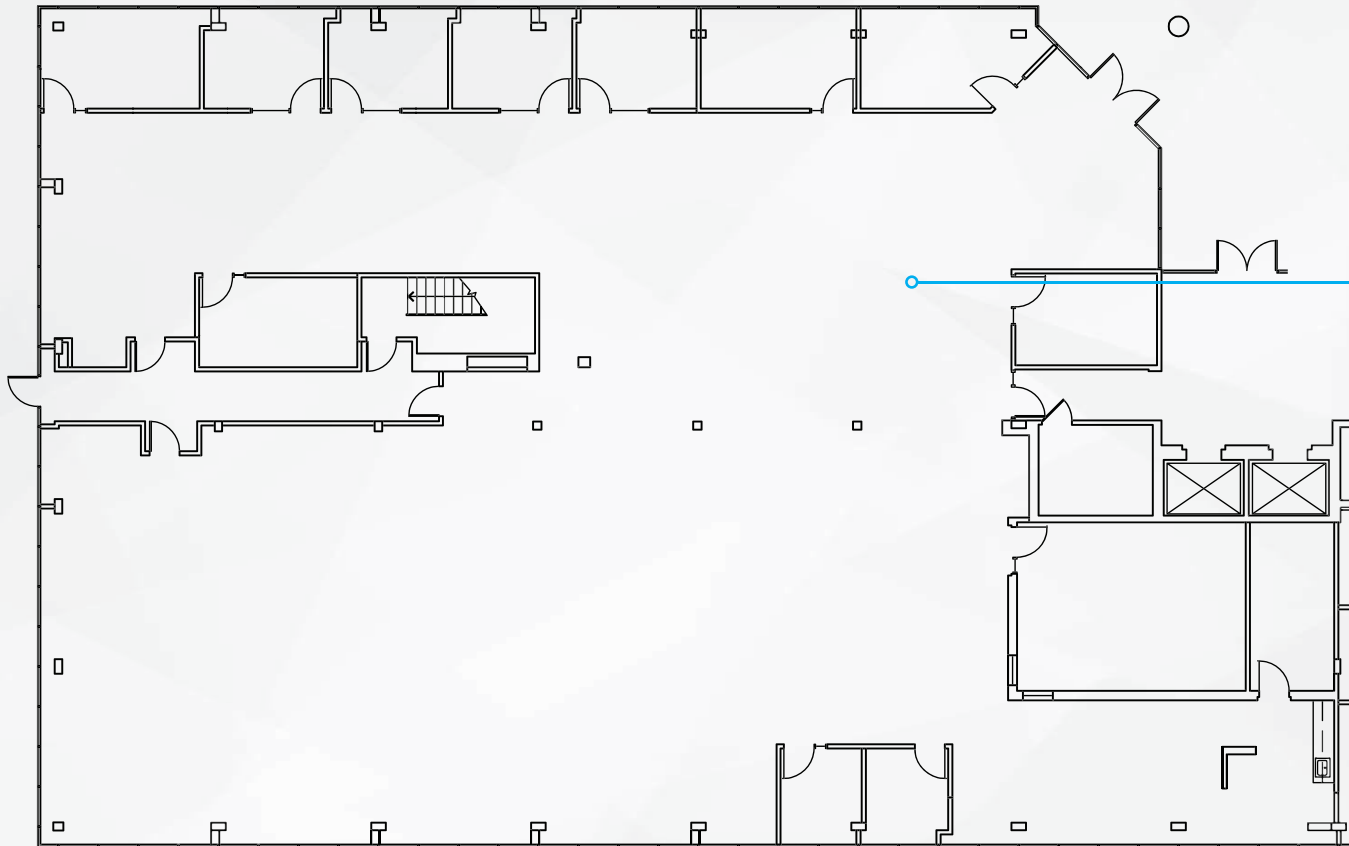
 **OUTDOOR SEATING**



BRIDGEPOINTE
OFFICE PARK



 **OUTDOOR COMMON AREA**

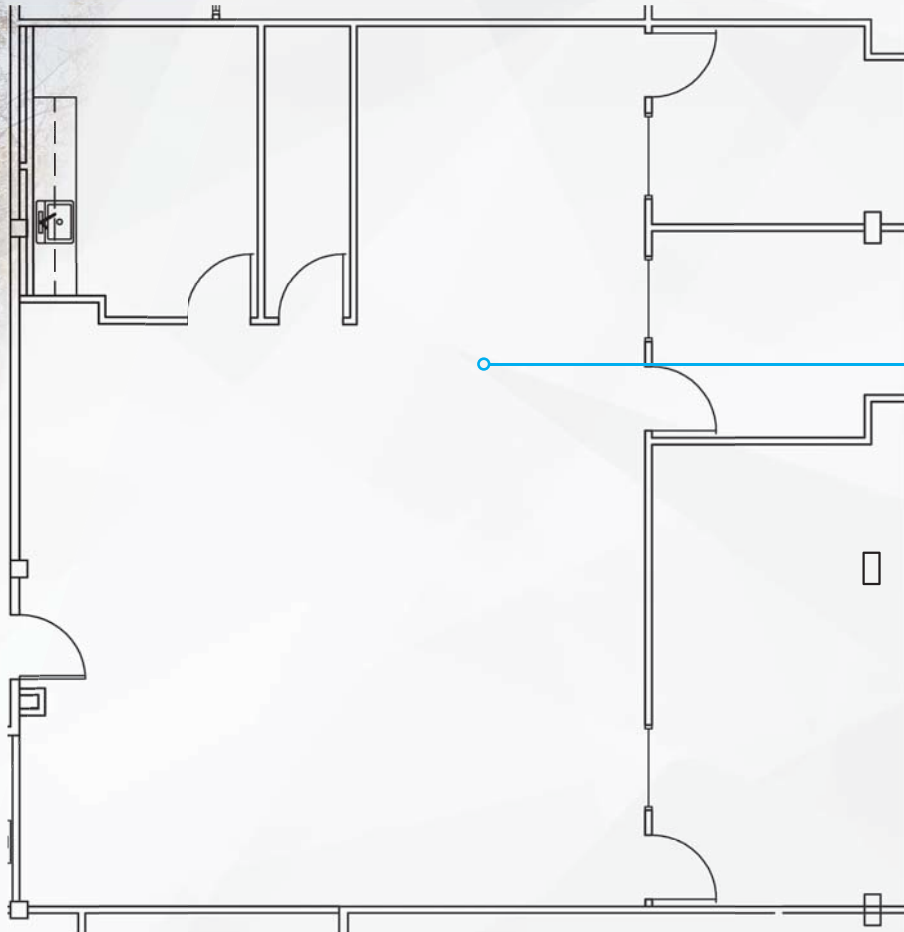


1500
FASHION ISLAND BOULEVARD

SUITE 100
±10,558 Square Feet

Can be made available with 30 days notice

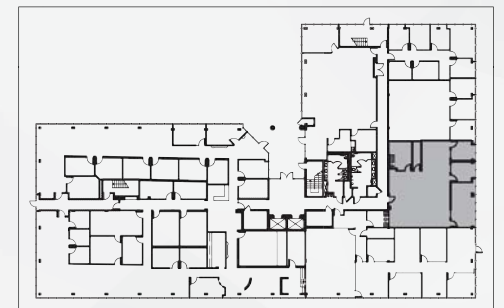


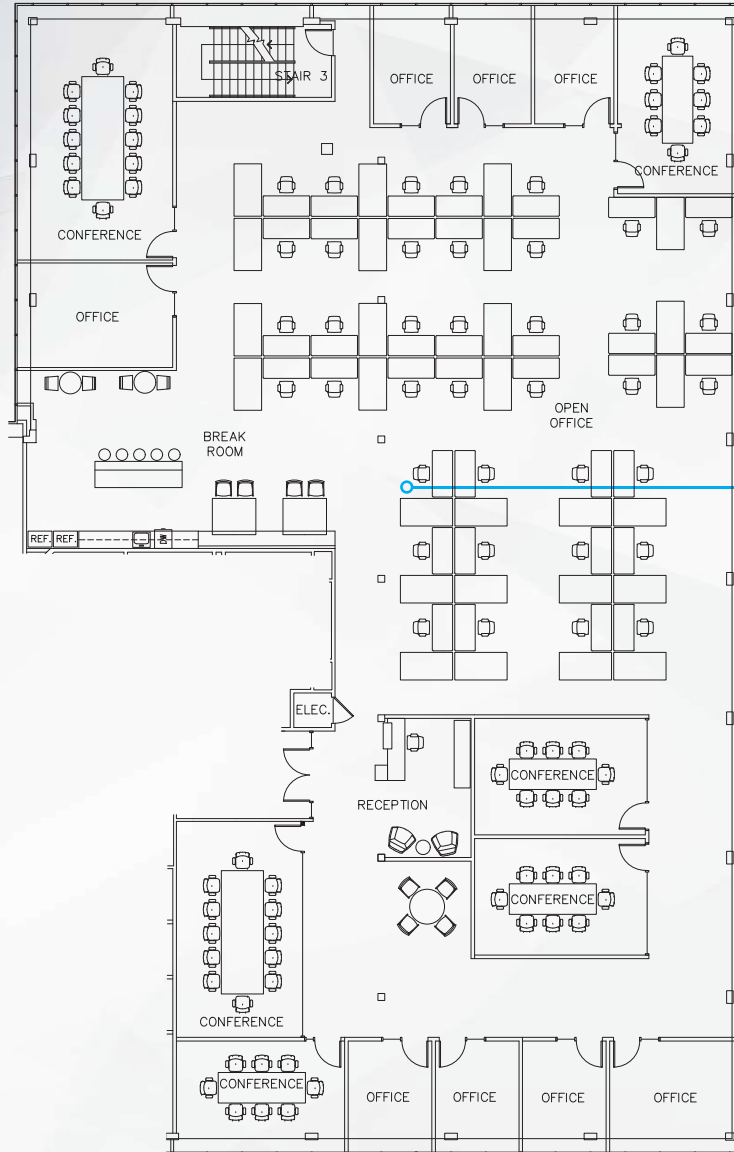


1500
FASHION ISLAND BOULEVARD

SUITE 103
±1,988 Square Feet

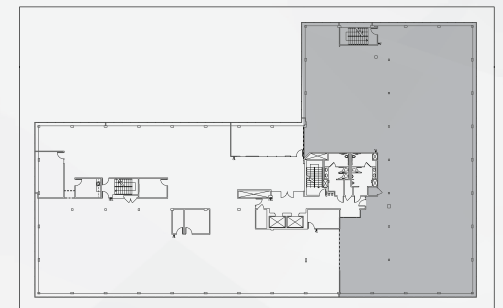
New Market Ready Improvements

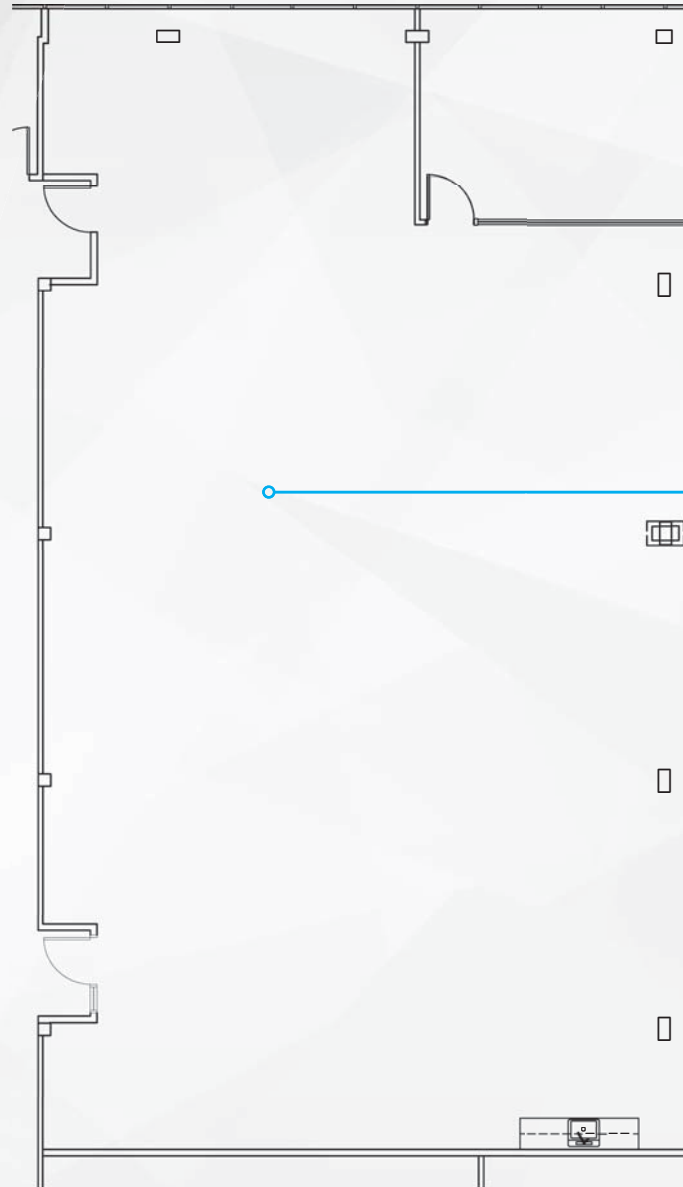




1500
FASHION ISLAND BOULEVARD

SUITE 201
±10,140 Square Feet



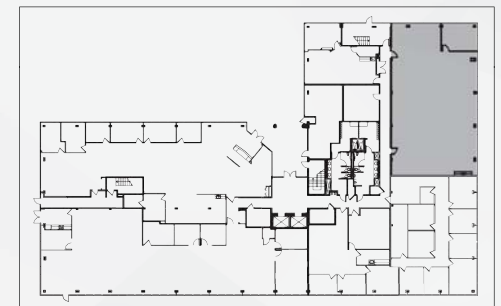


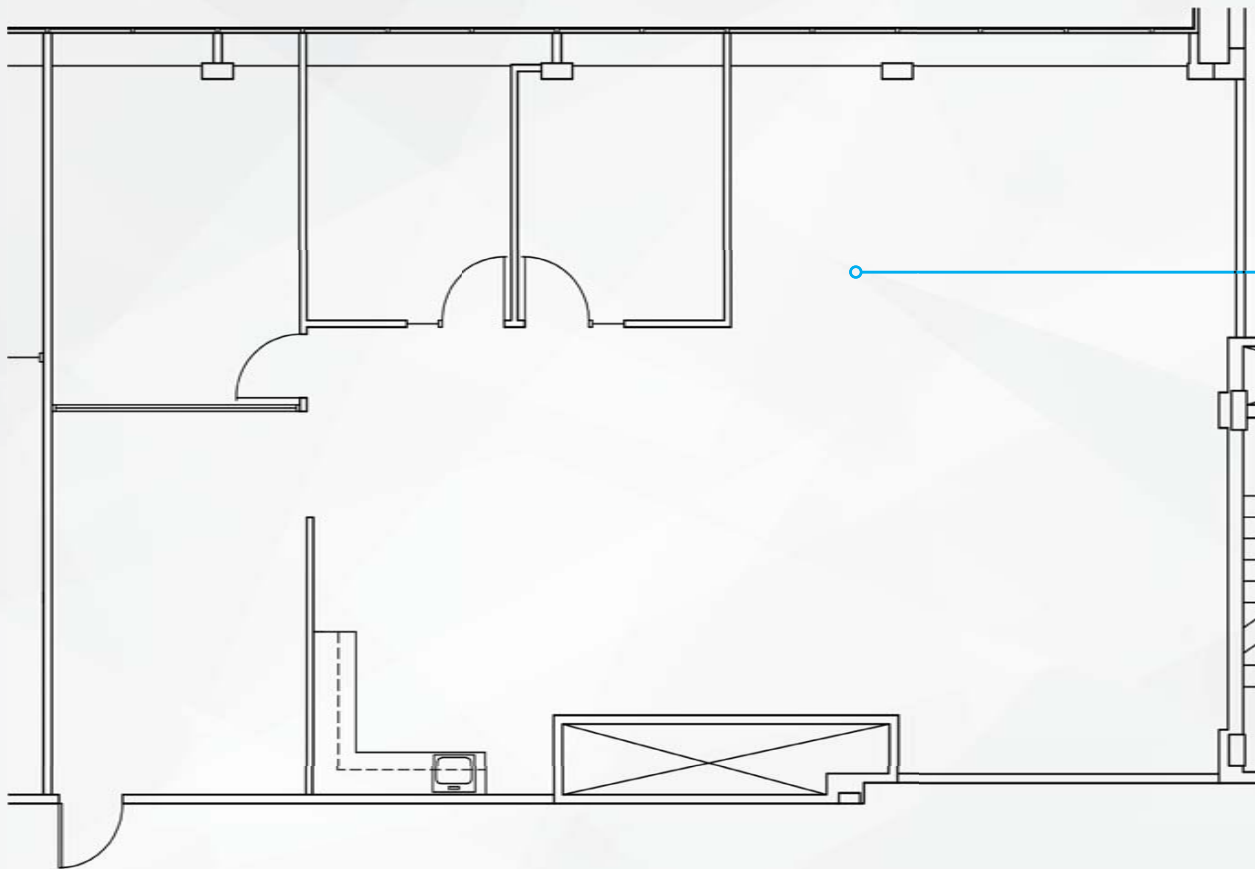
1510

FASHION ISLAND BOULEVARD

SUITE 104
±3,572 Square Feet

New Market Ready Improvements



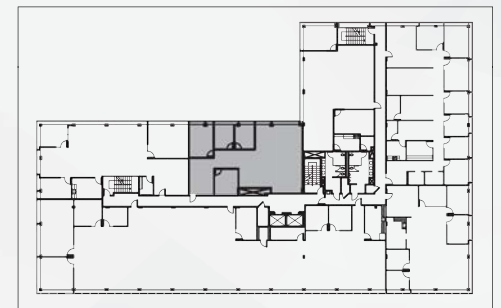


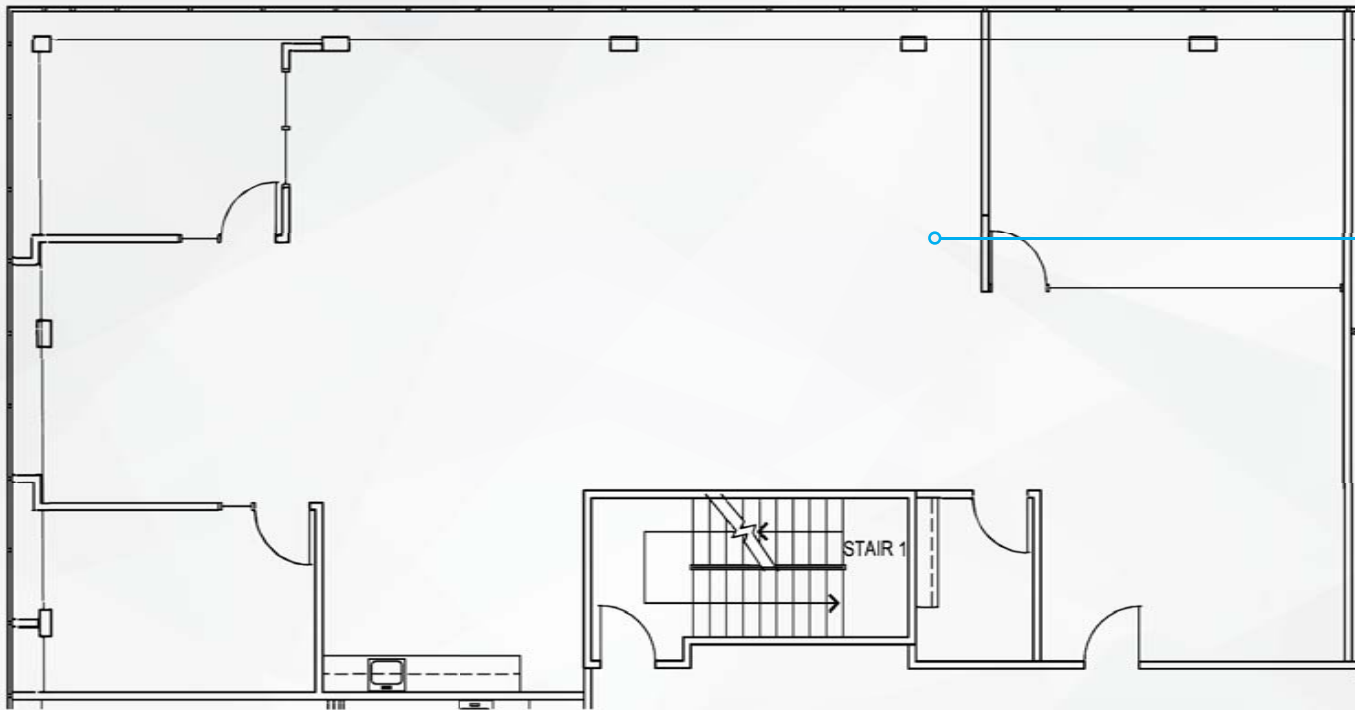
1510

FASHION ISLAND BOULEVARD

SUITE 250
±2,202 Square Feet

New Market Ready Improvements



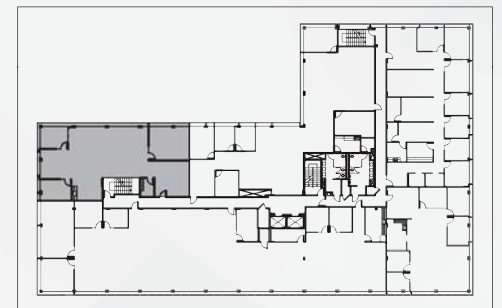


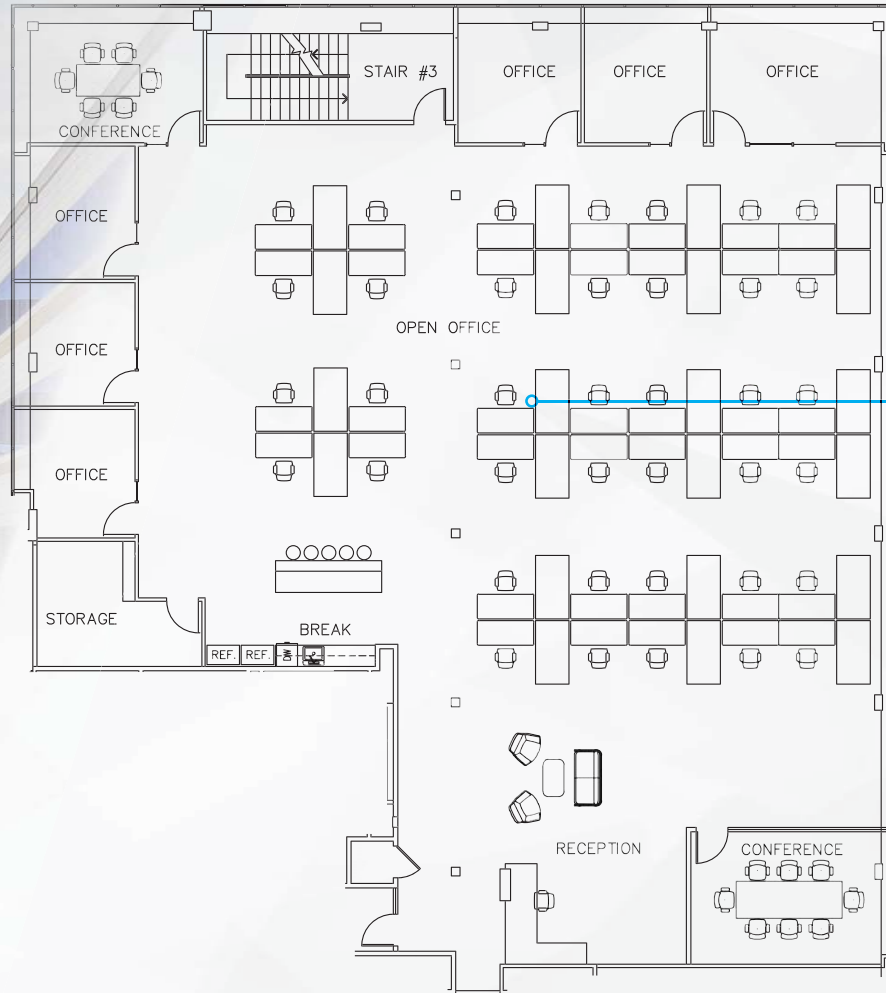
1510

FASHION ISLAND BOULEVARD

SUITE 260
±2,915 Square Feet

New Market Ready Improvements

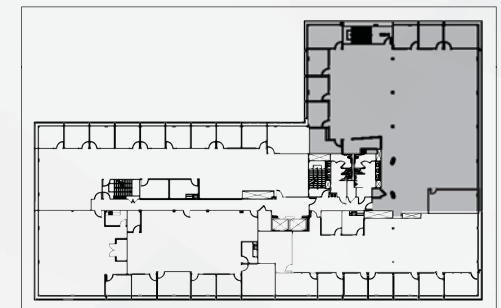


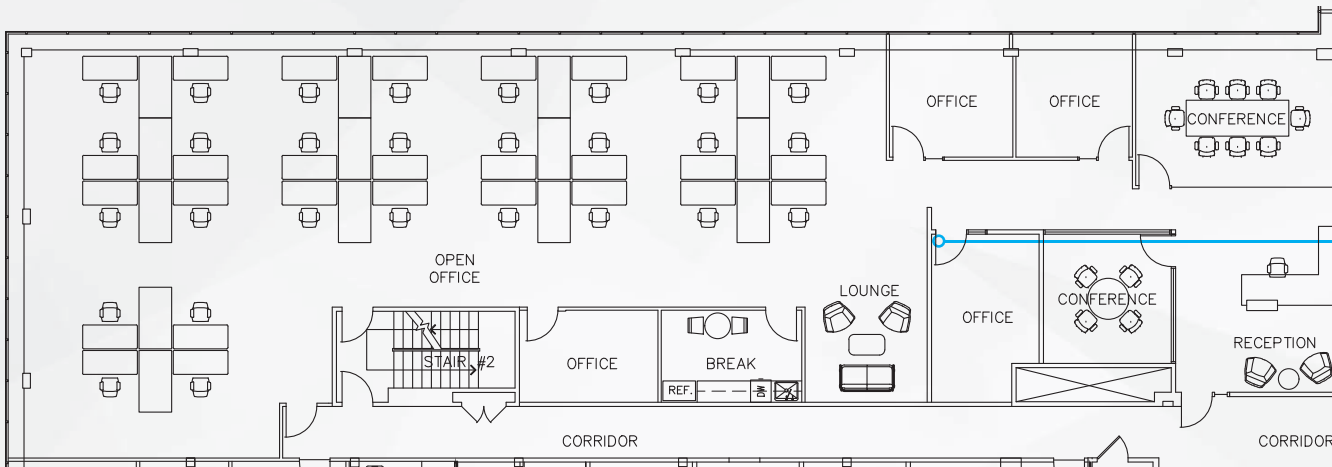


1510 FASHION ISLAND BOULEVARD

SUITE 300
±7,628 Square Feet

*Hypothetical Furniture Layout
New Market Ready Improvements



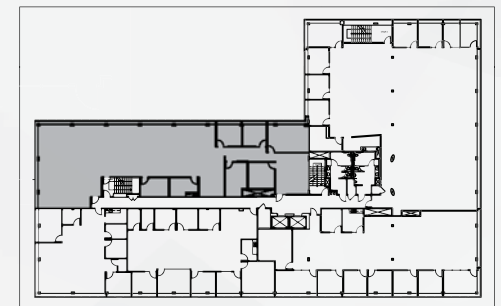


1510

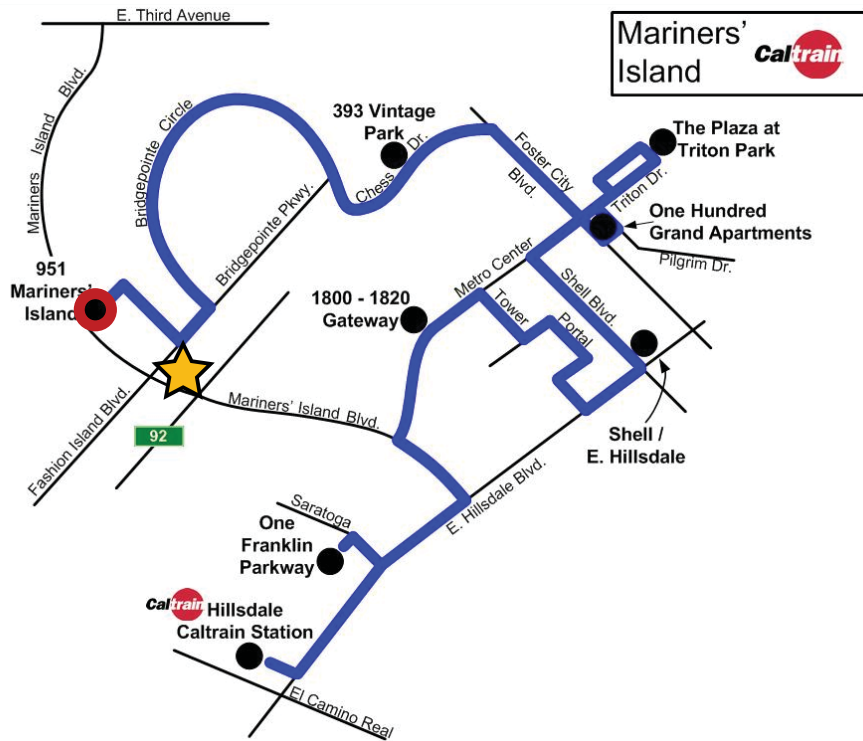
FASHION ISLAND BOULEVARD

SUITE 350
±5,281 Square Feet

*Hypothetical Furniture Layout
New Market Ready Improvements



STATION: HILLSDALE CALTRAIN



This shuttle runs between the Hillsdale Caltrain Station to the businesses in the San Mateo and Foster City border areas during commute hours, Monday through Friday.

Bridgepointe Office Park is located across the street from the 951 Mariner's Island Boulevard shuttle stop. This shuttle is free to riders.

AM

Northbound Caltrain No.	207	215	323	231
Arrives Hillsdale Station	6:54	7:34	8:23	9:09
Southbound Caltrain No.	208	216	324	232
Arrives Hillsdale Station	6:54	7:35	8:24	9:13
AM SHUTTLE				
Departs Hillsdale Station	7:00	7:43	8:29	9:18
951 Mariner's Island	7:32	8:15	9:01	9:50

PM

951 Mariner's Island	3:43	4:27	5:11	5:54
Arrives Hillsdale Station	3:57	4:41	5:25	6:08
Northbound Caltrain No.	159	263	273	277
Departs Hillsdale Station	4:08	4:51	5:47	6:14
Southbound Caltrain No.	258	262	370	274
Departs Hillsdale Station	4:04	4:50	5:43	6:15



BRIDGEPOINTE
OFFICE PARK

1500-1510 FASHION ISLAND BLVD. SAN MATEO

1500

JON MACKEY Senior Managing Director
408.987.4129
jmackey@newmarkccarey.com
CA RE License #01362376

GRAHAM WOODALL Managing Director
650.358.5274
gwoodall@newmarkccarey.com
CA RE License #01396445

JOHN KRAFT Managing Director
650.358.5277
jkraft@newmarkccarey.com
CA RE License #01787698

2950 SOUTH DELAWARE STREET, SUITE 125, SAN MATEO, CA 94403



The information contained herein has been obtained from sources deemed reliable but has not been verified and no guarantee, warranty or representation, either express or implied, is made with respect to such information. Terms of sale or lease and availability are subject to change or withdrawal without notice.

18-0094.04/18