

FOR LEASE > OFFICE BUILDING

400 Corporate Center Drive

CHERRINGTON CORPORATE CENTER, BUILDING 400, MOON TOWNSHIP, PA 15108



Property Information

- > Full building available | Up to 63,182 SF
- > Planned full building renovations in 2015
- > Building signage opportunity
- > Easy access to transportation corridors and excellent visibility in a premier suburban office park
- > Property management on-site
- > Institutional grade ownership

Building 400 > Amenities

- > Park like setting
- > Abundant free parking
- > Embassy Suites & Marriott Courtyard within walking distance

LEASE > RATE

Please contact one of our exclusive leasing professionals to discuss lease terms



**Equity
Commonwealth**



Future renovation 2015

PAUL HORAN
FOUNDING PRINCIPAL | PITTSBURGH
OFFICE BROKERAGE
412 321 4200 | EXT. 205
paul.horan@colliers.com

EDWARD LAWRENCE - MBA
PRINCIPAL | PITTSBURGH
OFFICE BROKERAGE
412 321 4200 | EXT. 213
ed.lawrence@colliers.com

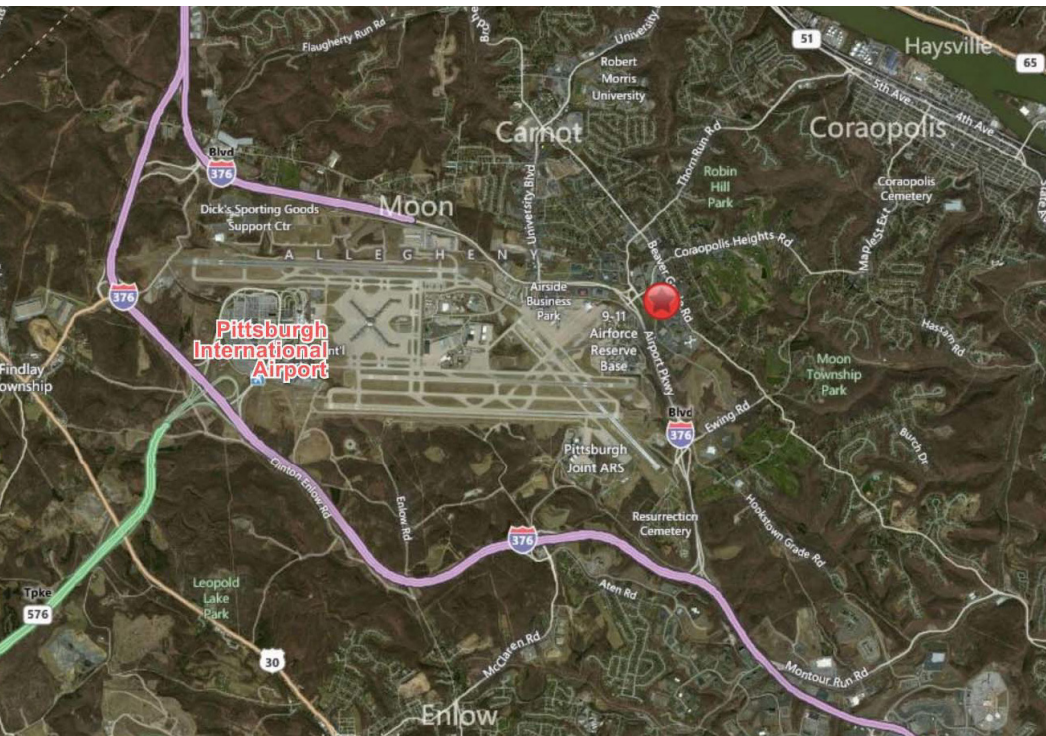
ALEXIS WILKERSON
ASSOCIATE | PITTSBURGH
OFFICE BROKERAGE
412 321 4200 | EXT. 225
alexis.wilkerson@colliers.com



4th Floor "As-Built" | 19,400 SF

Location > Access

Situated along the Parkway West Corridor, Cherrington Corporate Center | Building 400 is accessible via two interchanges from Route 60 (Ewing Road and Thorn Run Road), located in close proximity to the Pittsburgh International Airport and just 20 minutes to downtown Pittsburgh.



Contact Us

PAUL HORAN
FOUNDING PRINCIPAL | PITTSBURGH
OFFICE BROKERAGE
412 321 4200 | EXT. 205
paul.horan@colliers.com

EDWARD LAWRENCE MBA
PRINCIPAL | PITTSBURGH
OFFICE BROKERAGE
412 321 4200 | EXT. 213
ed.lawrence@colliers.com

ALEXIS WILKERSON
ASSOCIATE | PITTSBURGH
OFFICE BROKERAGE
412 321 4200 | EXT. 225
alexis.wilkerson@colliers.com

COLLIERS INTERNATIONAL | PITTSBURGH
Two Gateway Center, Suite 125
603 Stanwix Street
Pittsburgh, PA 15222
www.colliers.com/pittsburgh

The information contained herein has been given to us by the owner of the property or other sources deemed reliable. We have no reason to doubt its accuracy, but we do not guarantee it. All information should be verified prior to purchase or lease.

