



**CUSHMAN &
WAKEFIELD**
Commerce

FOR LEASE

Dunkley Office Property

3103 Harrison Boulevard / Ogden, Utah



**Lease Rate: \$750 per month, MG.
Lower level office space for lease.**

Property Highlights

- Size: Approximately 1,000 SF
- Excellent location on Harrison Boulevard
- Ample parking

Joseph Florence, CCIM
Senior Director
+1 801 784 5312
jflorence@comre.com

April Hartzell
Office Manager
+1 801 784 5319
ahartzell@comre.com

Julie Brown
Associate
+1 801 784 5317
jbrown@comre.com

372 24th Street, Suite 320
Ogden, Utah 84401
Main +1 801 525 3000
Fax +1 801 525 9596
comre.com

Independently Owned and Operated / A Member of the Cushman & Wakefield Alliance

Cushman & Wakefield Copyright 2016. No warranty or representation, express or implied, is made to the accuracy or completeness of the information contained herein, and same is submitted subject to errors, omissions, change of price, rental or other conditions, withdrawal without notice, and to any special listing conditions imposed by the property owner(s). As applicable, we make no representation as to the condition of the property (or properties) in question. (path: G:\1 - Projects\Ogden\Florence, J\1 - Flyers\3103HarrisonBlvd)

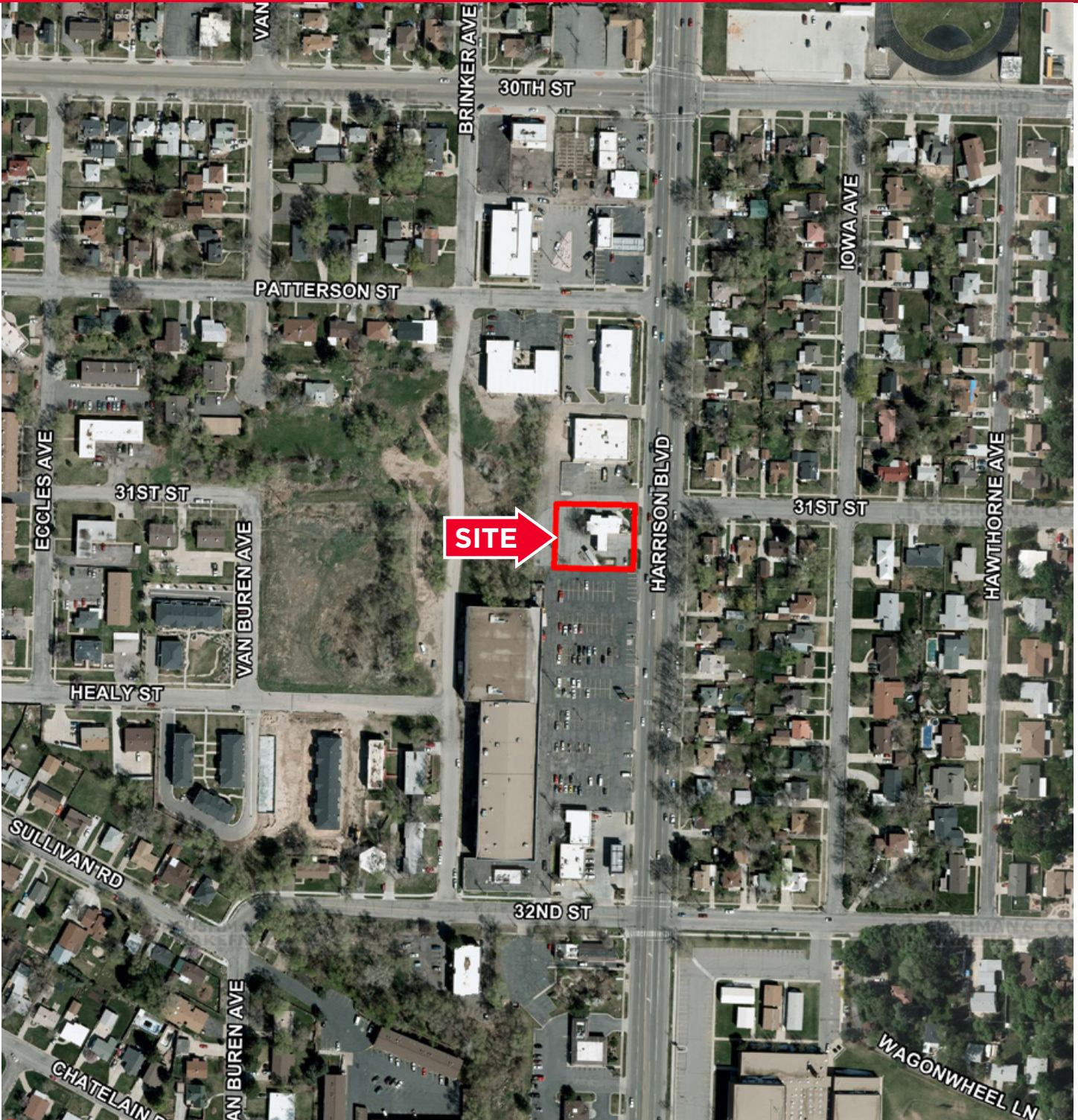


**CUSHMAN &
WAKEFIELD**
Commerce

FOR LEASE

Dunkley Office Property

3103 Harrison Boulevard / Ogden, Utah



Joseph Florence, CCIM
Senior Director
+1 801 784 5312
jflorence@comre.com

April Hartzell
Office Manager
+1 801 784 5319
ahartzell@comre.com

Julie Brown
Associate
+1 801 784 5317
jbrown@comre.com

372 24th Street, Suite 320
Ogden, Utah 84401
Main +1 801 525 3000
Fax +1 801 525 9596
comre.com

Independently Owned and Operated / A Member of the Cushman & Wakefield Alliance

Cushman & Wakefield Copyright 2016. No warranty or representation, express or implied, is made to the accuracy or completeness of the information contained herein, and same is submitted subject to errors, omissions, change of price, rental or other conditions, withdrawal without notice, and to any special listing conditions imposed by the property owner(s). As applicable, we make no representation as to the condition of the property (or properties) in question. (path: G:\1 - Projects\Ogden\Florence, J\1 - Flyers\3103HarrisonBlvd)