



One Newark Center

420,000 sq. ft.

Class A office in
the heart of
Newark's Central
Business District

onenewarkcenter.com

1085 RAYMOND BOULEVARD | NEWARK, NEW JERSEY

CBRE

BUILDING HIGHLIGHTS

- One block from Newark Penn Station with access to Amtrak, NJTransit and PATH train services
- Large sixth floor full-service café with outdoor patio seating, featuring views of New York City
- 24/7 manned and electronic security service
- 2N redundant power, fed by four 26.2 kva network circuits (street network grid)
- Redundant fiber optic circuits with two POEs
- Dedicated, secured, covered parking garage
- 13'6" slab-to-slab
- 9' finished ceiling height



Extensive capital improvement plan underway

PANORAMIC VIEWS



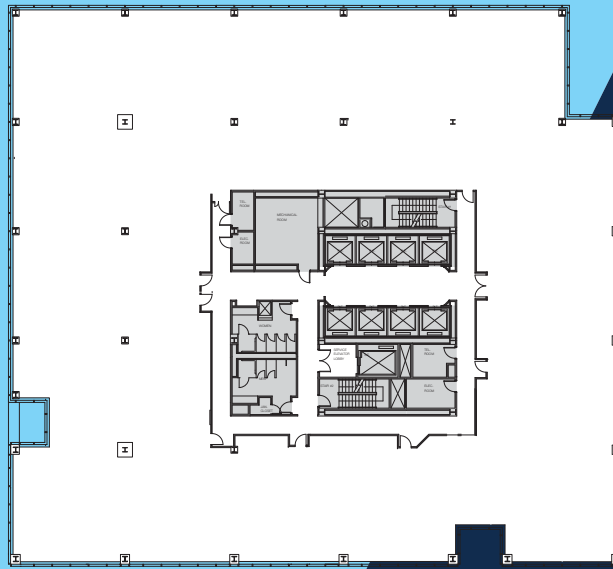
Connected parking deck with **945 spaces**



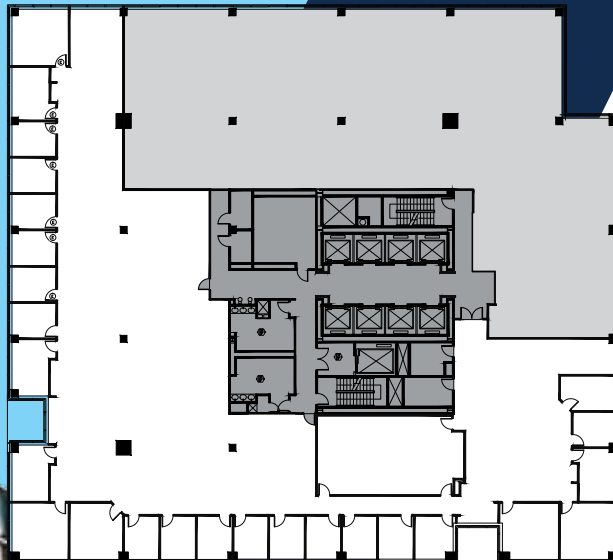
AVAILABLE SPACE

 VIEW TOUR	21st floor	3,284 sq. ft.	exterior private patio
	18th floor	5,000-15,796 sq. ft.	
 VIEW TOUR	17th floor	4,496 sq. ft.	
	16th floor	26,074 sq. ft.	
	12th floor	26,074 sq. ft.	
	9th floor	7,229 sq. ft.	
	7th floor	24,369 sq. ft.	

TYPICAL FULL FLOOR



18th floor | 5,000-15,796 sq. ft.





IN THE CENTER OF NEWARK

WALKING DISTANCE to Prudential Center, Newark Penn Station, New Jersey Performing Arts Center and more



JONATHAN MEISEL
Senior Vice President
+1 732 509 2843
jonathan.meisel@cbre.com



CHARLES LAGINESTRA
Senior Vice President
+1 201 712 5611
charles.laginestra@cbre.com



ERIN WENZLER
Senior Associate
+1 201 712 5893
erin.wenzler@cbre.com

onenewarkcenter.com

© 2020 CBRE, Inc. All rights reserved. This information has been obtained from sources believed reliable, but has not been verified for accuracy or completeness. You should conduct a careful, independent investigation of the property and verify all information. Any reliance on this information is solely at your own risk. CBRE and the CBRE logo are service marks of CBRE, Inc. All other marks displayed on this document are the property of their respective owners, and the use of such logos does not imply any affiliation with or endorsement of CBRE.

CBRE