

271 CHURCH STREET AKA 90 FRANKLIN STREET

TRIBECA

NEW YORK
NY



SPACE DETAILS

LOCATION

Northeast corner of Franklin Street

APPROXIMATE SIZE

Space A

Ground Floor	1,130 SF
Mezzanine	250 SF

Space B

Ground Floor	1,268 SF
Mezzanine	500 SF

Total 3,198 SF

POSSESSION

Immediate

TERM

Negotiable

FRONTAGE

Space A

42 FT on Church Street
30 FT on Franklin Street

Space B

12 FT on Church Street
30 FT on Franklin Street

CEILING HEIGHT

Ground Floor 18 FT

SITE STATUS

Space A Formerly Sweaty Betty

Space B Formerly Quick Cryo

NEIGHBORS

Jason Scott, Tracy Anderson, Rag and Bone, James Cohan Gallery, R & Company, James Perse, Two Hands Restaurant, Thom Browne, La Colombe and Aire Ancient Baths

COMMENTS

Spaces can be combined

Plans going before Landmarks Preservation Committee to create a dedicated entrance on Franklin Street for Space B

Shared entrance with Tracy Anderson, a celebrity fitness tenant with more than 300 members

Space B has access to the buildings freight loading area

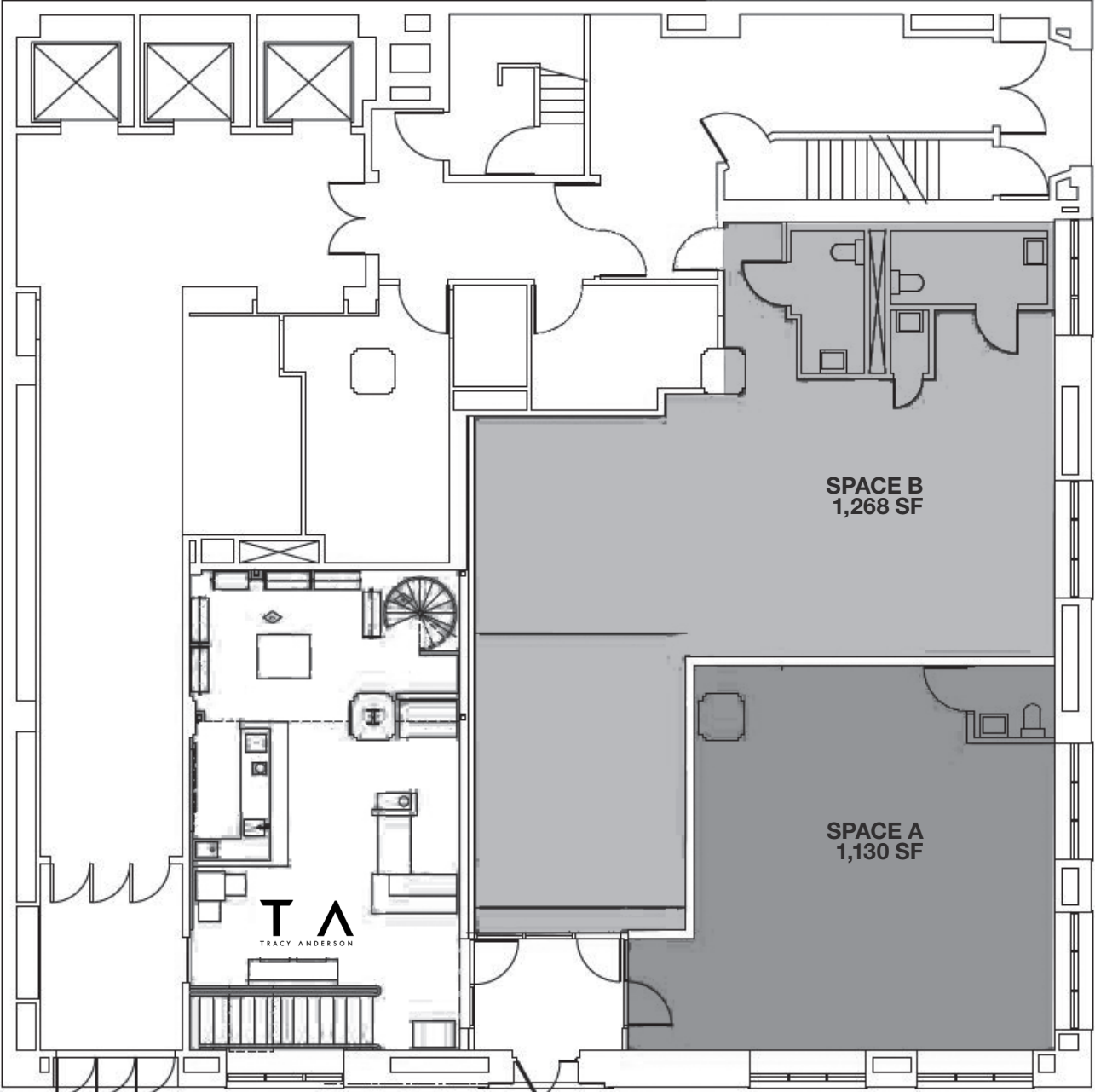
Church Street is Tribeca's hottest new street and Franklin Street is its most established retail street

Across the street from the four-star Roxy Hotel and nearby 56 Leonard Street, the tallest residential building in Tribeca with an Anish Kapoor stainless steel sculpture at the base

Strong mix of TAMI office tenants and high-end residential in the immediate vicinity

FLOOR PLAN

GROUND FLOOR



30 FT
FRANKLIN STREET
30 FT

12 FT 42 FT
CHURCH STREET

AREA RETAIL



CONTACT EXCLUSIVE AGENTS

BRANDON MILLER

212.916.2931

brandonalden.miller@ngkf.com

ANDREW STERN

212.351.9353

andrew.stern@ngkf.com



NGKF.COM

© 2019 NEWMARK KNIGHT FRANK RETAIL. The information contained herein has been obtained from sources deemed reliable but has not been verified and no guarantee, warranty or representation, either express or implied, is made with respect to such information. Terms of sale or lease and availability are subject to change or withdrawal without notice.