

STRATFORD SQUARE

411 BARNUM AVENUE CUTOFF | STRATFORD, CT 06614

AVAILABLE 19,374SF

ANCHORED BY



MEDICAL DEVELOPMENT OPPORTUNITY



PROPERTY INFORMATION

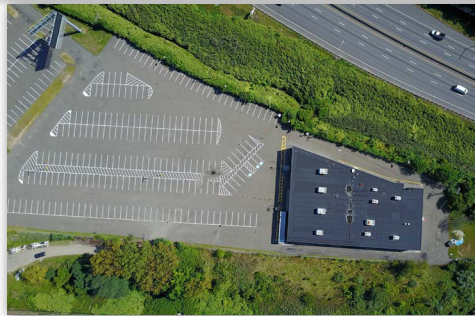
- Prime commercial location situated in a concentrated retail market
- Easy access on and off of I-95
- High visibility center
- Traffic Count:
I-95: 121,498 vpd
Barnum Ave Cutoff: 8,950 vpd

SPACE DETAILS

- Available 19,374sf

AREA DEMOGRAPHICS

2019 DEMOGRAPHICS	3 MILE	5 MILE	7 MILE
POPULATION	98,684	223,784	324,843
MEDIAN HH INC	\$68,155	\$66,048	\$75,651
AVERAGE HH INC	\$78,409	\$78,437	\$91,721



FOR MORE INFORMATION CONTACT:

CRAIG GAMBARDELLA | 203.683.1564 | craig@chartweb.com



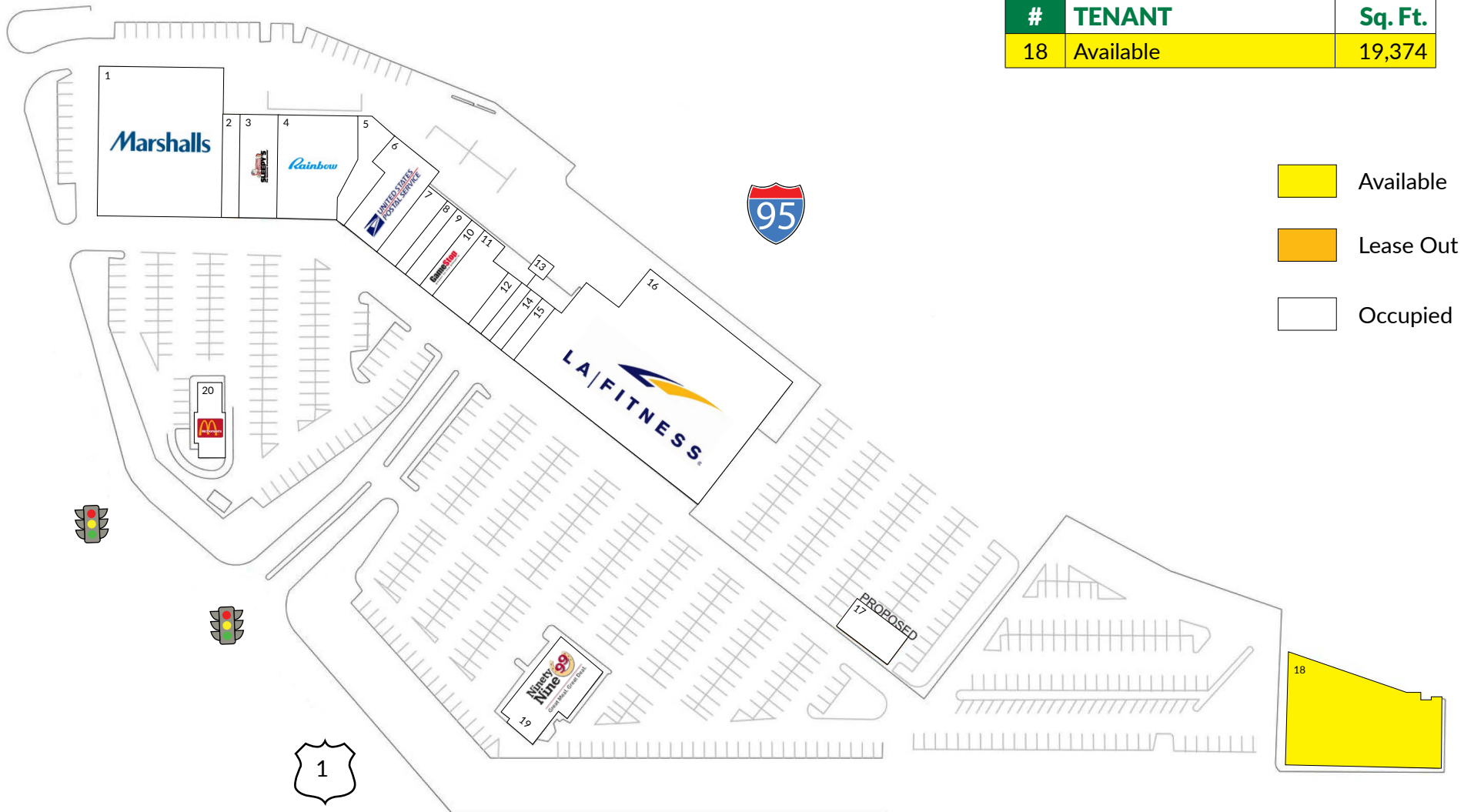
www.chartweb.com

STRATFORD SQUARE

411 BARNUM AVENUE CUTOFF | STRATFORD, CT 06614

TENANTS / AVAILABILITY

#	TENANT	Sq. Ft.
18	Available	19,374



STRATFORD SQUARE

411 BARNUM AVENUE CUTOFF | STRATFORD, CT 06614

