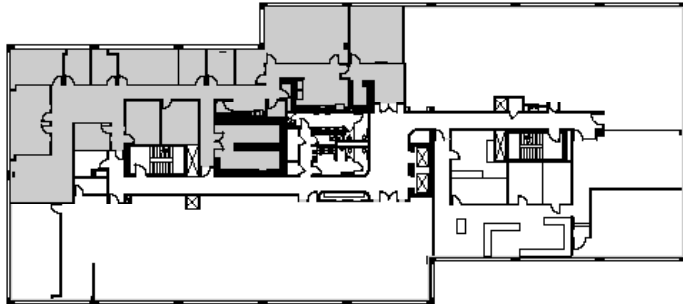


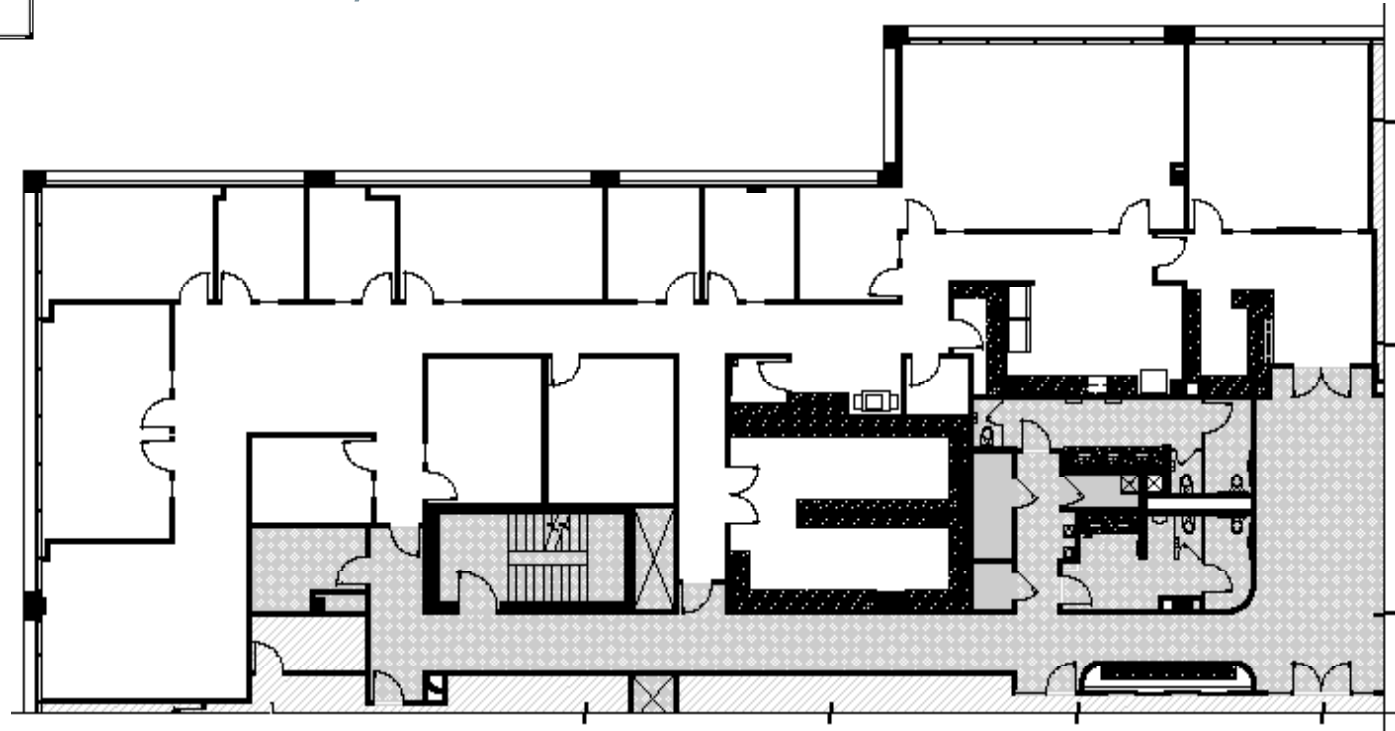
# AURORA CORPORATE PLAZA

12100 E Iliff Ave | Aurora, CO



**Key Plan**  
Not to Scale

## BUILDING A SUITE 350 6,529 SF



**JOHN MILLER**  
Vice President  
+1 720 528 6511  
[john.d.miller@cbre.com](mailto:john.d.miller@cbre.com)

**JOHN MAROLD**  
Senior Vice President  
+1 720 528 6355  
[john.marold@cbre.com](mailto:john.marold@cbre.com)



**CBRE**