

# COTTONWOOD

CORPORATE  CENTER



Hines



CUSHMAN &  
WAKEFIELD

# 9

## COTTONWOOD CORPORATE CENTER

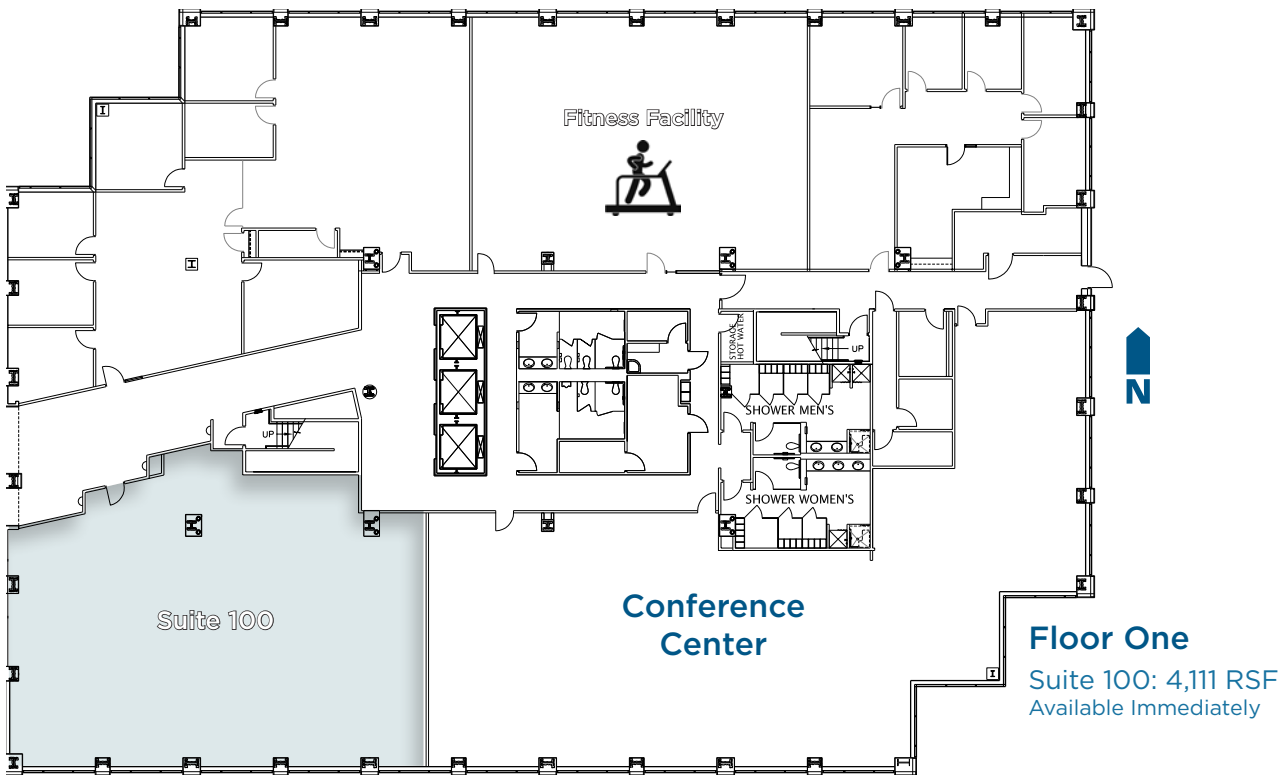
2795 East Cottonwood Parkway  
Salt Lake City, UT

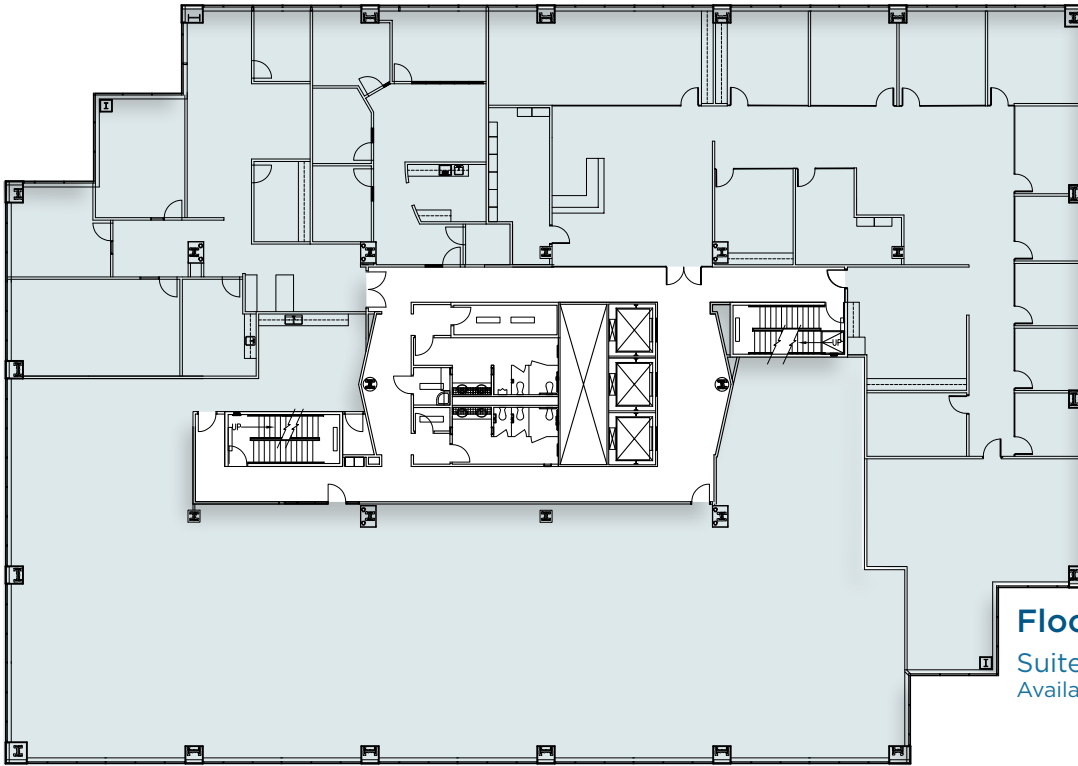
**Cottonwood Corporate Center** is one of Salt Lake City's most prestigious locations. Nestled at the foot of the Wasatch Mountains, the project overlooks nearly the entire Salt Lake Valley. Easy access to I-215 freeway and just 20 minutes away from downtown Salt Lake City, Park City and the Salt Lake International Airport. Four ski resorts are also just minutes away, and nearby are several premier hotels, many popular restaurants and Old Mill Golf Course.

- \$32.00 - \$34.00/RSF, full service
- 4:1,000 Parking: 50% Covered
- Bike/Ski Lockers
- Coming Soon: Tenant Lounge, Conference Center and Patio
- Covered and Reserved Parking available
- Crown and Monument Signage Available
- On-site Property Management and Engineering
- New Fully-Equipped Fitness Center with New Lockers and Showers
- Electric Vehicle Charging Stations



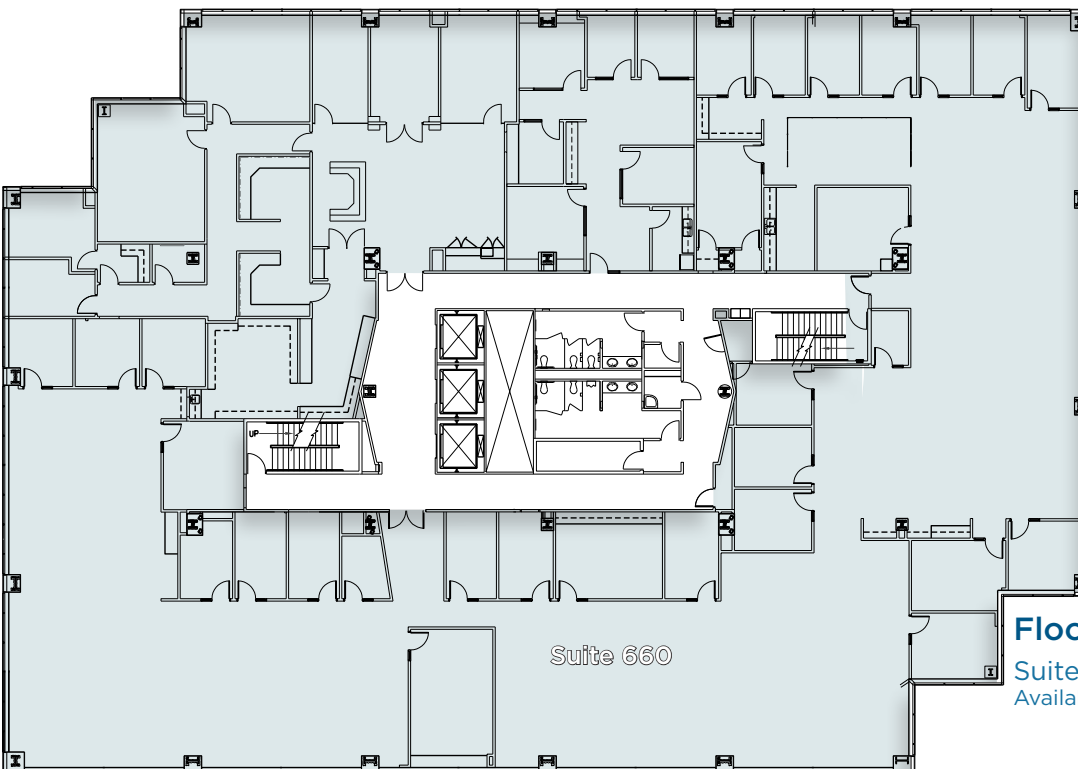
**LEED Existing Building Certified**





**Floor Five**

Suite 500: 23,105 RSF  
Available August 1, 2020



**Floor Six**

Suite 660  
Suite 600: 23,476 RSF  
Available August 1, 2020

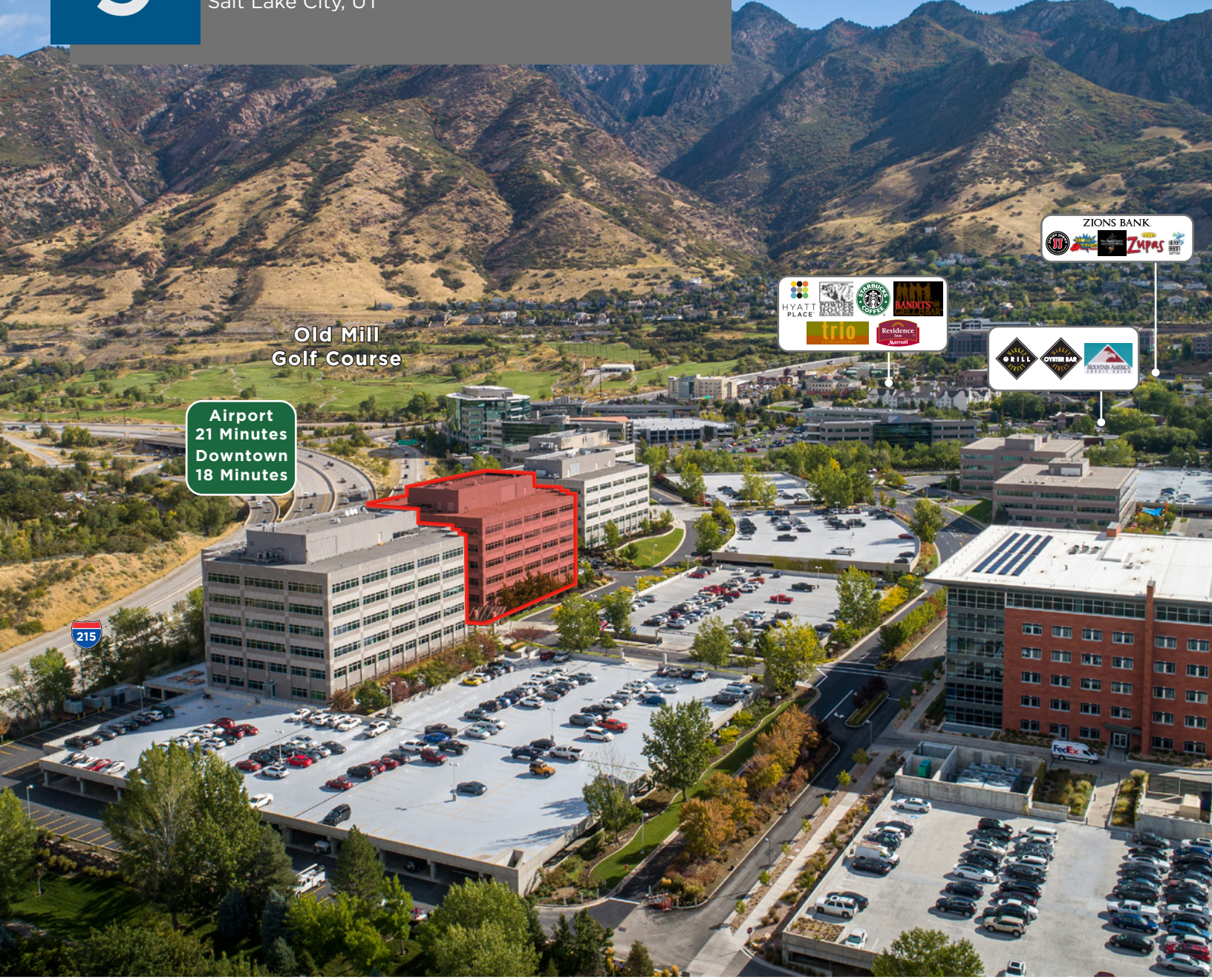




# 9

## COTTONWOOD CORPORATE CENTER

2795 East Cottonwood Parkway  
Salt Lake City, UT



Old Mill  
Golf Course

Airport  
21 Minutes  
Downtown  
18 Minutes



FOR LEASING INFORMATION, PLEASE CONTACT -

**Mike Richmond**  
+1 801 303 5434  
mike.richmond@cushwake.com

**Dana Baird, CCIM**  
+1 801 303 5526  
dana.baird@cushwake.com

**Amanda Lawson**  
+1 801 303 5492  
amanda.lawson@cushwake.com

# Hines



## CUSHMAN & WAKEFIELD

170 South Main Street  
Suite 1600  
Salt Lake City, UT 84101  
Main +1 801 322 2000  
cushmanwakefield.com

Cushman & Wakefield Copyright 2018. No warranty or representation, express or implied, is made to the accuracy or completeness of the information contained herein, and same is submitted subject to errors, omissions, change of price, rental or other conditions, withdrawal without notice, and to any special listing conditions imposed by the property owner(s). As applicable, we make no representation as to the condition of the property (or properties) in question. (path)Path: G:\1 - Projects\Richmond, Mike\1 - Flyers\Cottonwood Corporate Center\Flyers