

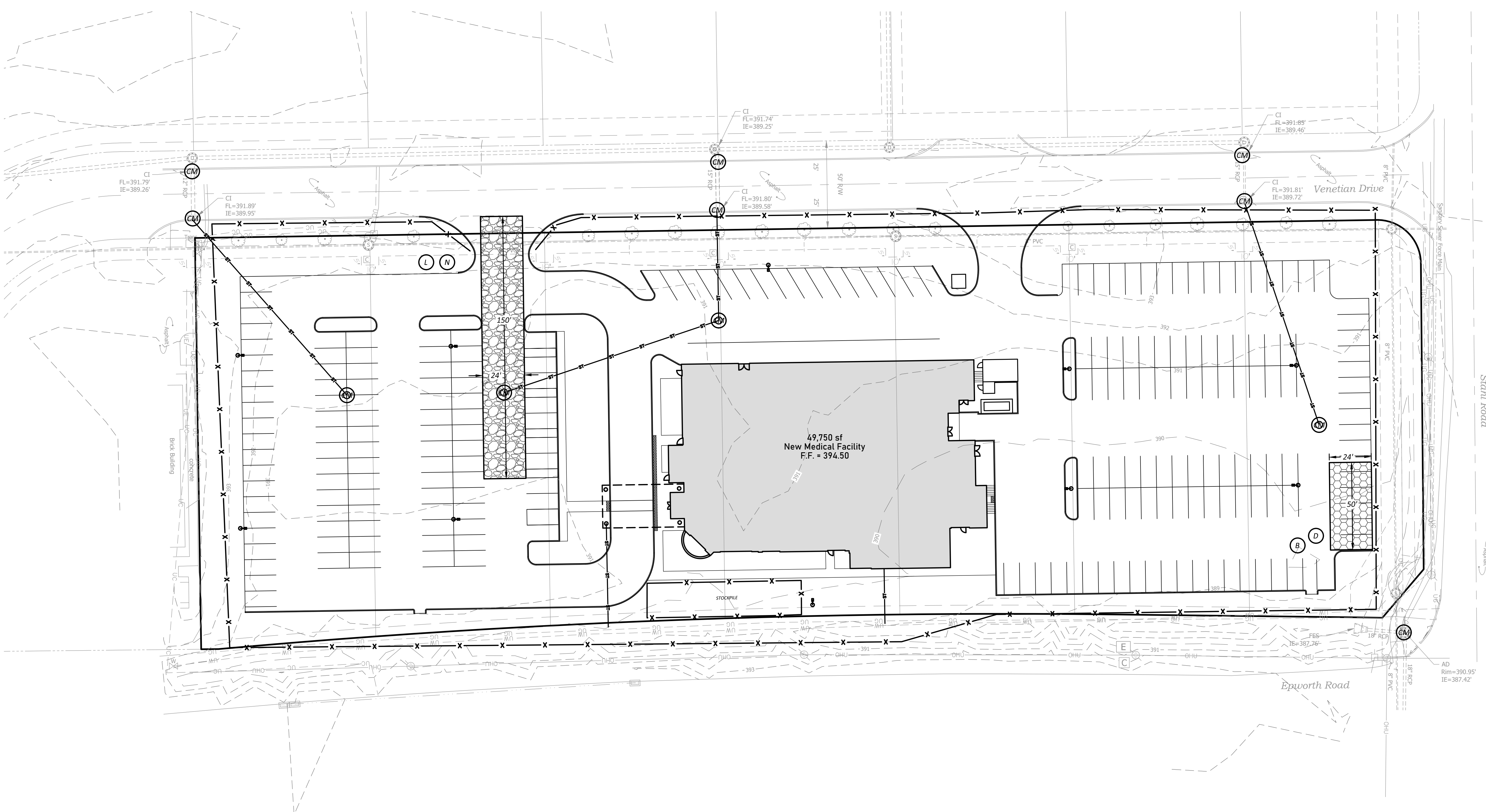
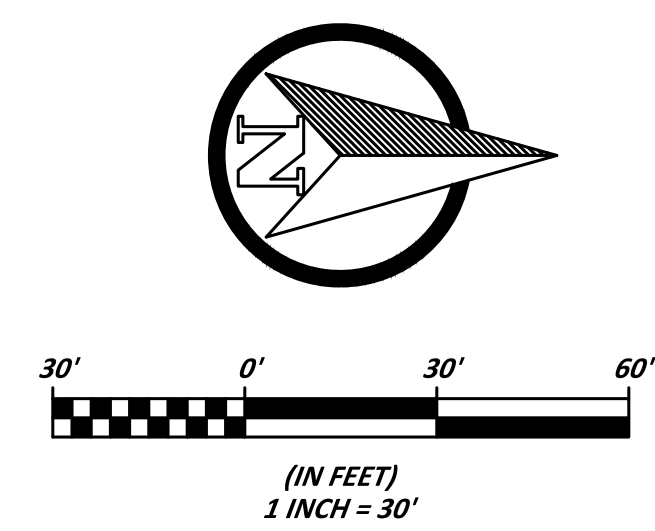
EXISTING LEGEND

	Center Line	(C)	Calculated Dimension
	Easement Line	Cd.	Card
	Property Boundary Line	D.R.	Deed Record
	Right-of-way Line	Doc.	Document
	Underground Communication	Dr.	Drawer
	Underground Electric	E	East
	Underground Gas	(Fnd)	Found
	Underground Water	Inst.	Instrument
	Zoning	(M)	Measured Dimension
	5/8" Rebar with cap stamped "Morley ID#0023" (Set)	N	North
	Mag Nail with Washer stamped "Morley ID#0023" (Set)	Pg.	Page
		R	Range
		(R)	Record Dimension
		S	South
		T	Township
		W	West

PROPOSED LEGEND

	Temporary Construction Entrance/Exit
	Heavy Equipment Parking/Maintenance/Refueling Area
	Silt Fence/Construction Limits
	Soil Stock Pile - Suggested Location
	Coir Mat Protection
	Construction Dumpster - Suggested Location
<p>EROSION NOTES:</p>	

1. Details and standards for all erosion control measures are shown in the most current edition of the Indiana Storm Water Quality Manual. Contractor may obtain a copy at www.in.gov/idem/stormwater or directly from IDEM. Please reference this manual for all erosion control details.
2. Temporary construction entrance must be installed prior to any construction activities.
3. Seed and straw all disturbed areas upon completion of final grading. All seeding shall be placed in accordance with the specifications set forth in the Indiana Storm Water Quality Manual unless otherwise indicated by the owner.
4. Protect all inlets with Coir Mat fabric protection to be inspected and replaced in accordance with the Indiana Storm Water Quality Manual.
5. It is the contractor's sole responsibility to keep any and/or all sediment off of public roads and out of storm water collection pipes. Contractor shall clean sediment off public roads daily after the cessation of construction activities for that day.
6. The below plan is meant for initial guidance only. It is the contractor's responsibility to add additional measures as required during the construction process.
7. All stockpiles are to be temporarily surrounded by silt fence maintained until completion.
8. All areas disturbed during construction shall have temporary vegetation/stabilization installed if work ceases within the area for 15 days.



Client

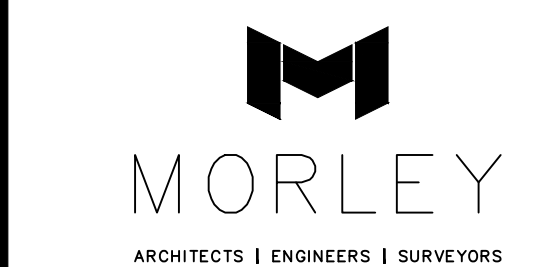
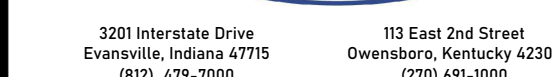


SUMMIT LAND DEVELOPMENT NEW SURGERY CENTER & MOB
 3800 Venetian Way
 Newburgh, IN 47630

Architect



Associated Engineers & Surveyor



Professional Certification

06-18-2020

Copyright Protection

All drawings, specifications, and other documents ("documents" hereafter) are protected under 17 U.S.C. § 102. The design professional responsible for the preparation of the documents retains all statutory rights, common law rights, and intellectual property rights. The documents shall not be released, duplicated, copied or used by any person or entity without the express written consent of the design professional. Authorized use of electronic documents does not guarantee the information contained in the electronic documents is current, complete or accurate. It is the responsibility of all document users to verify with the design professional the documents (print or electronic) in question are the most current, complete and accurate documents available. All documents are for exclusive use on the referenced project only.

Applicability Disclaimer

This is a comprehensive set of working drawings and specifications. Some drawings and/or specifications may not be applicable to this specific project. It is the responsibility of every Contractor, Sub-Contractor, Vendor, and Supplier to review all drawings and/or specifications to determine their applicability to this specific project. Present the Architect with all applicability questions prior to bidding. Failure to comply with this requirement will be the basis for rejecting associated change order requests.

If a specified product is no longer available it shall be the Contractor's, Sub-Contractor, Vendor or Supplier's responsibility to provide an equal substitution. The Architect reserves the sole right to determine the suitability of proffered substitutions.

Sheet Content

Civil
Storm Water Pollution Prevention Plan

Sheet Revisions

No.	Brief Description Of Revision	Date

Drawing Information

Project No.	Drawing Sheet No.
3315-20	
Original Print Date	
2020 06-18	
Revision Print Date	

C6.1