



211 PERIMETER  
CENTER

AVENUE FOR  
ADVANCEMENT

# JOIN A PROGRESSIVE COMMUNITY

211 Perimeter Center is an 11 story, Class A destination offering the energy and convenience of city life. Surrounded by nearly two dozen Fortune 500 companies with 1,400 - 20,000 RSF available, discover space suited for full floor headquarters and smaller footprint firms alike. More than just a place to work, 211 Perimeter Center is an avenue for advancement.



ELEVATED SENSE OF ARRIVAL



CAFE 211

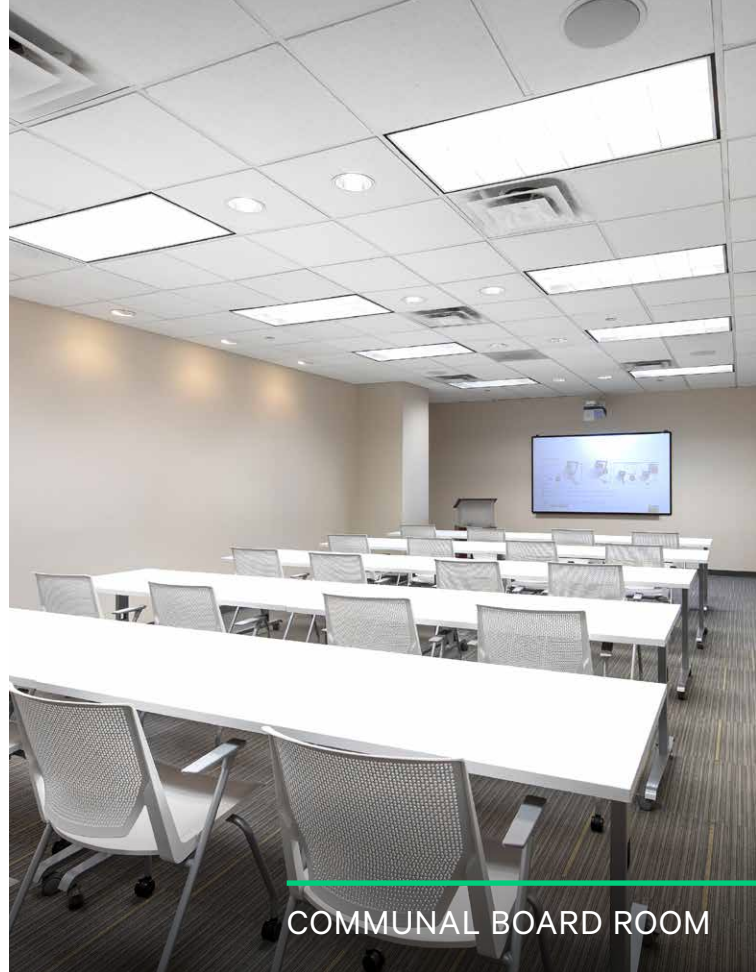


ACTIVATED GREEN SPACE





ON-SITE LOBBY SECURITY



COMMUNAL BOARD ROOM



FITNESS CENTER ACCESS

## ACTIVATING A STRONG AMENITY BASE

DISCOVER A GROWING ON-SITE AMENITY BASE THAT MAKES WORK-LIFE EASY AT 211 PERIMETER CENTER.



Renovated tenant patio for outdoor collaboration



Grab breakfast or lunch at Cafe 211



Arrange formal presentations in the communal conference facility



Make workouts a priority with complimentary fitness center access



Enjoy consistent peace of mind thanks to on-site property management and security


# ADVANCING CONNECTIVITY

Here your morning americano, evening cocktail and everything in-between is within a short, enjoyable walk. A place where rising talent wants to be, a day to night experience that you can access on foot — discover a change of pace at 211 Perimeter Center.



\*Within ~1 Mile Radius

 **30+**  
RESTAURANTS

 **10+**  
HOTELS

 **15+**  
ESSENTIALS

**Joey D's**  
OAK ROOM

**Seasons**  
FRESH GRILL

**Del Frisco's**  
DOUBLE EAGLE STEAK HOUSE

**PERIMETER MALL**

**Chuy's**

**SHAKE SHACK**

**CROWNE PLAZA**  
HOTELS & RESORTS

**Marriott**

**HYATT PLACE**

**Le MERIDIEN**

**WESTIN**  
HOTELS & RESORTS

**HOMWOOD SUITES**  
Hilton

**TARGET**

**COSTCO**  
WHOLESALE

**DICK'S**  
SPORTING GOODS.

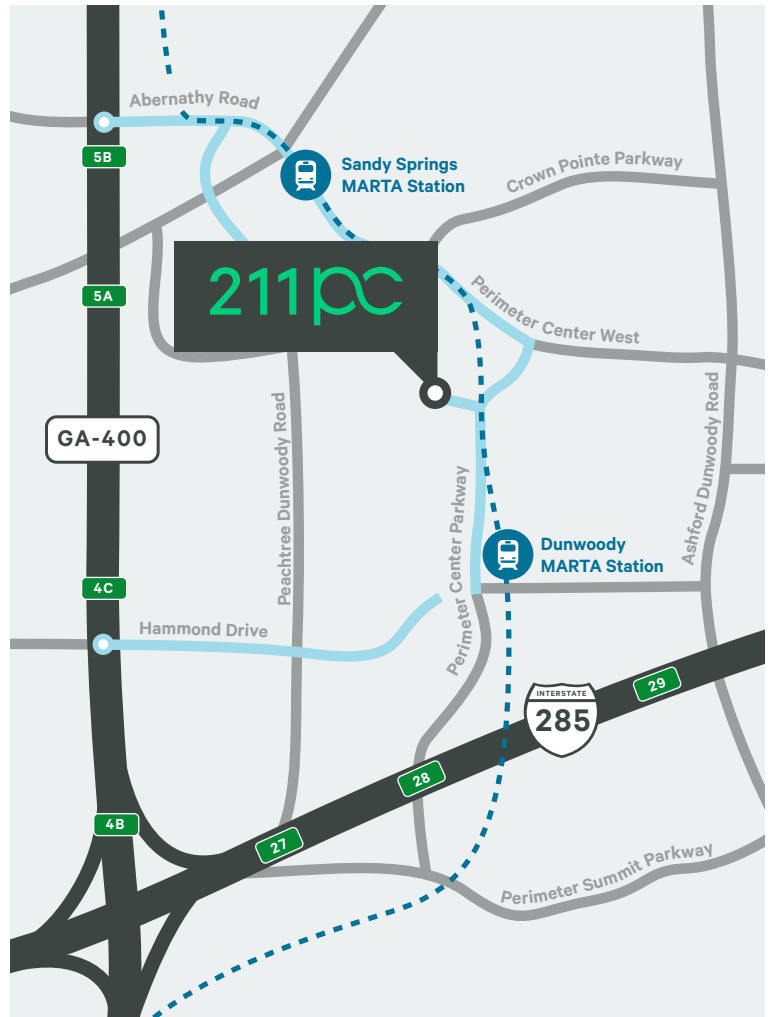
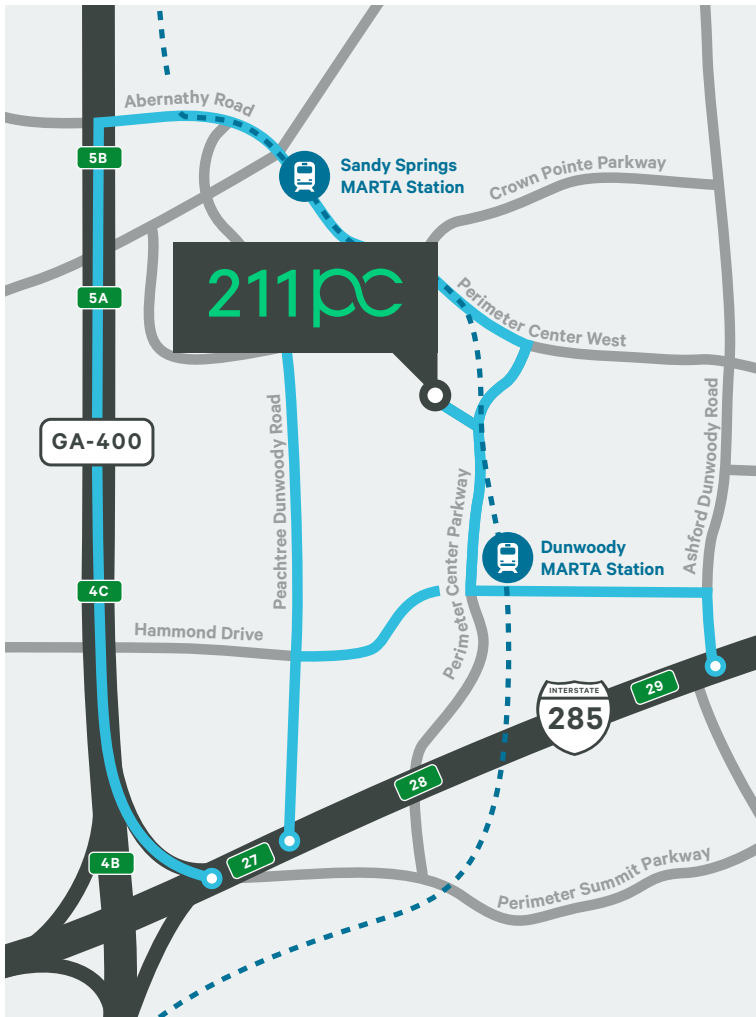
**Kroger**

**FedEx**

**Publix**

# ADVANCING ACCESSIBILITY

Convenient to I-285 and GA-400, enjoy easy commutes to Roswell and Marietta, as well as Buckhead, Midtown, Downtown and Hartsfield-Jackson International Airport.



## CONVENIENT ACCESS ROUTES TO/FROM I-285

- Via Abernathy Road
- Via Peachtree Dunwoody Road
- Via Hammond Drive and Ashford Dunwoody Road

## CONVENIENT ACCESS ROUTES TO/FROM GA-400

- Via Abernathy Road
- Via Hammond Drive

A SIX MINUTE  
WALK TO

**marta**





# 211pc

*For leasing information, please contact:*

**JEFF BELLAMY**

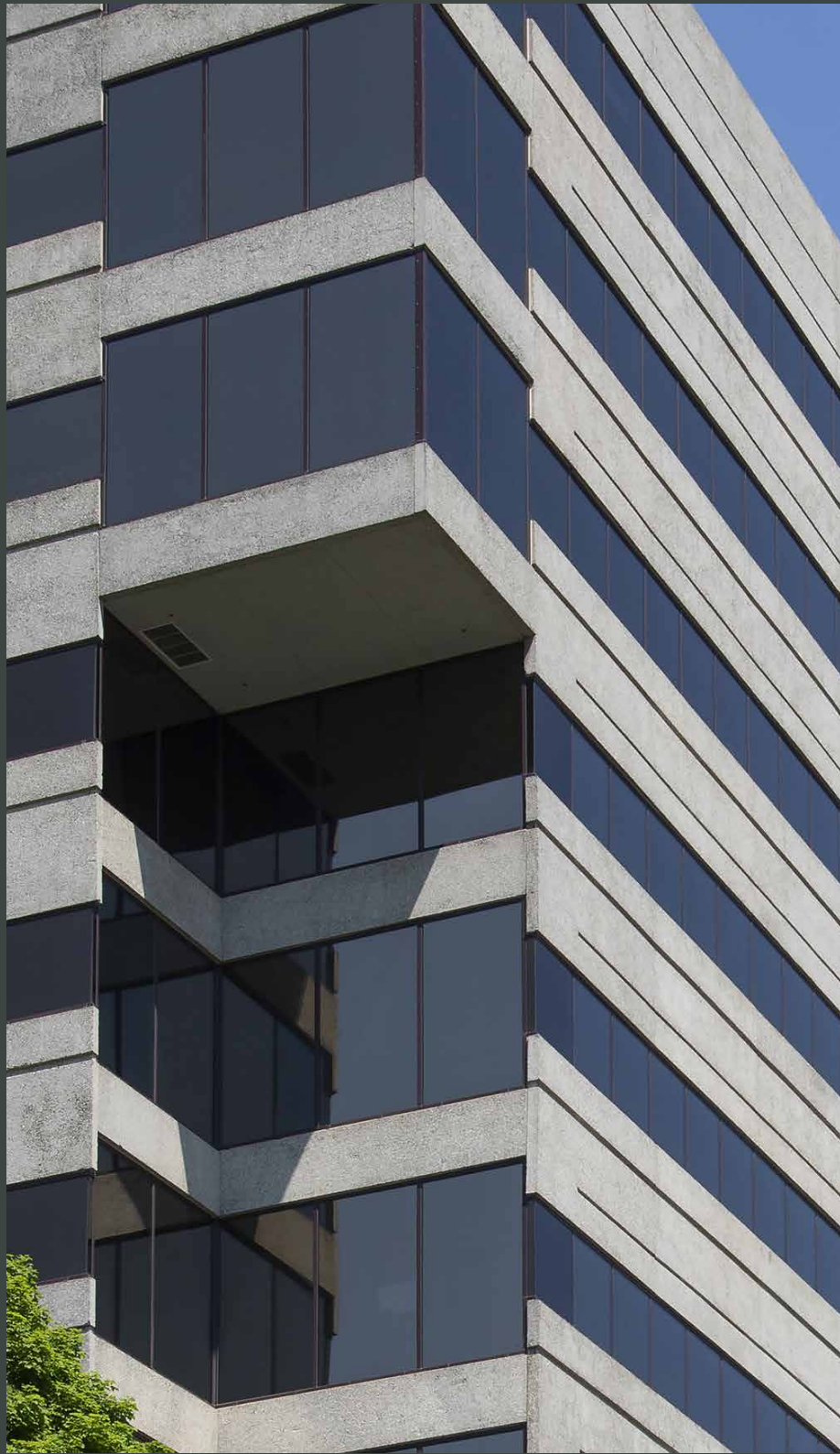
404.995.2221

[jeff.bellamy@am.jll.com](mailto:jeff.bellamy@am.jll.com)

**CLAIRE ROSS**

404.995.2473

[claire.ross@am.jll.com](mailto:claire.ross@am.jll.com)



©2019, Jones Lang LaSalle IP, Inc.

All rights reserved. All information contained herein is from sources deemed reliable; however, no representation or warranty is made to the accuracy thereof.