

Office Space for Lease

10918 Vance Jackson, San Antonio, Texas 78230
Near Corner of Vance Jackson and Wurzbach



LOCATION

GREAT NORTH CENTRAL OFFICE
LOCATION JUST NORTH OF WURZBACH PKWY
CLOSE TO LOOP 410 & 281 AND IH-10

AMENITIES

- CONVENIENT TO MAJOR ARTERIAL ROADS
- CLOSE PROXIMITY TO ABUNDANT EATING ESTABLISHMENTS AND SHOPPING DESTINATIONS
- MINUTES FROM SAN ANTONIO INTERNATIONAL AIRPORT & DOWNTOWN
- PROFESSIONAL MANAGED AND LEASED BY PROPERTY MANAGEMENT BELMARES PROPERTIES

PRICE

\$20.00/ SF/YEAR OR \$950.00/ MONTH

AVAILABLE

Suite 103, 569 Square feet

Belmares Properties

210 877-0815

Sal Belmares

210 889-7022

Sal@belmaresproperties.com

Belmares

P R O P E R T I E S

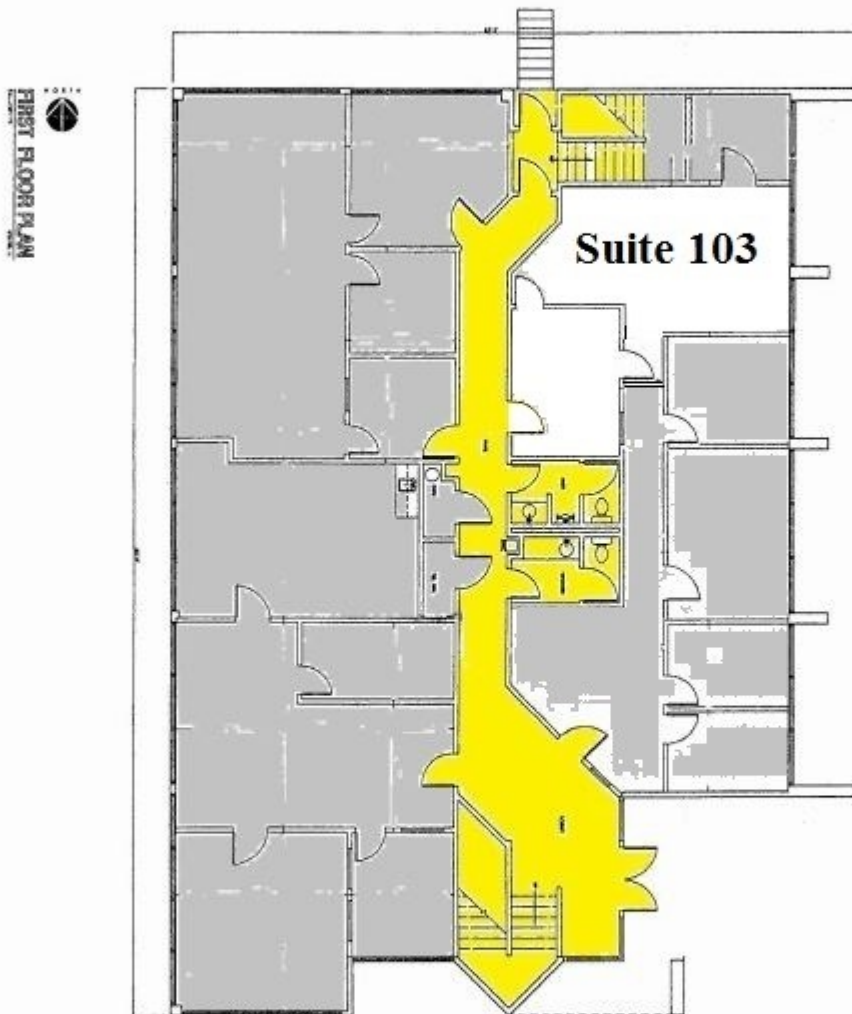
www.belmaresproperties.com

Office Space for Lease

10918 Vance Jackson, San Antonio, Texas 78230
Near Corner of Vance Jackson and Wurzbach

First Floor

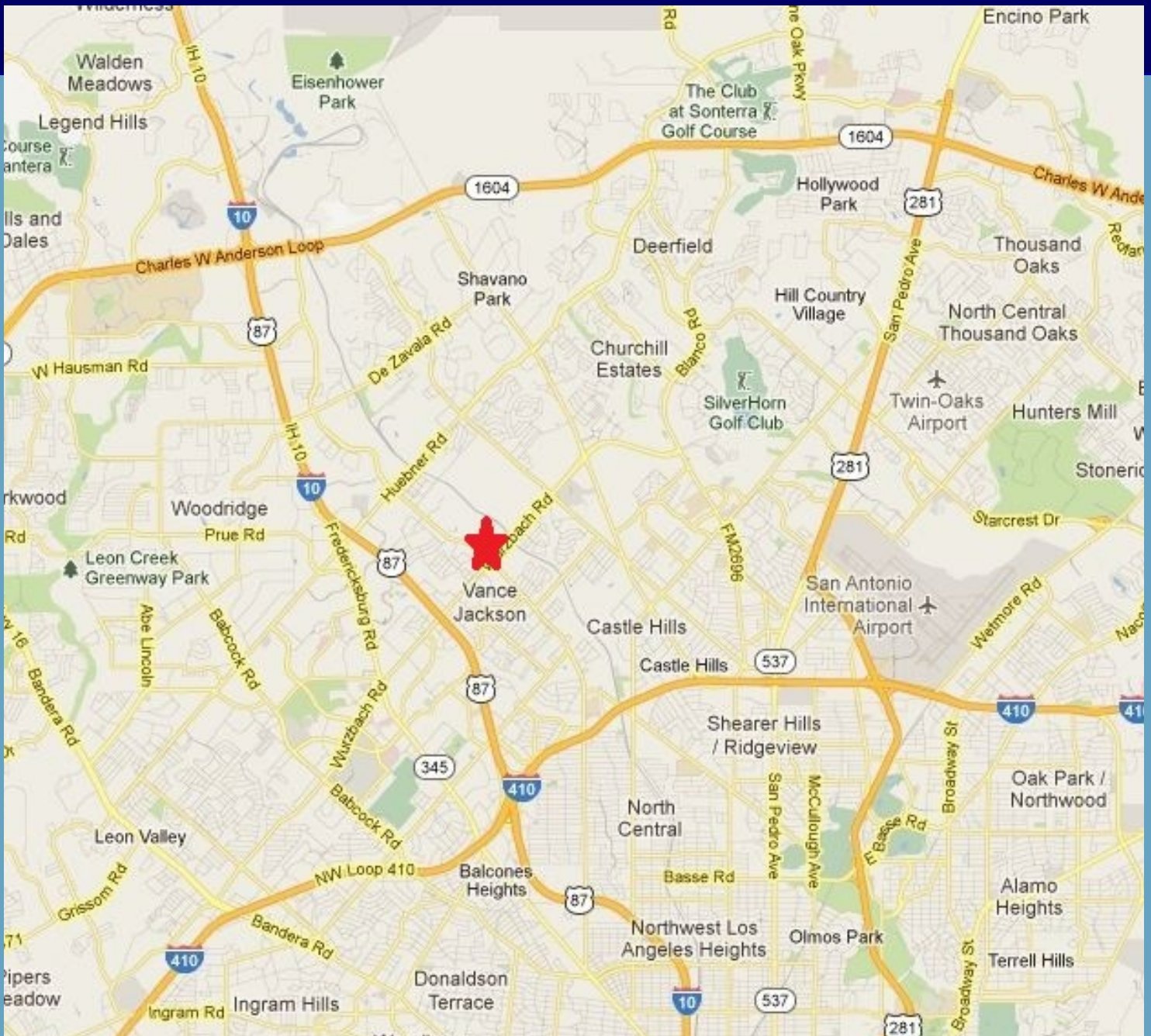
Suite 103, 569 SF
\$950.00 Monthly



www.belmaresproperties.com

Office Space for Lease

10918 Vance Jackson, San Antonio, Texas 78230
Near Corner of Vance Jackson and Wurzbach



Belmares
PROPERTIES

www.belmaresproperties.com

Belmares Properties

210 877-0815

Sal Belmares

210 889-7022

Sal@belmaresproperties.com