



### Property Details

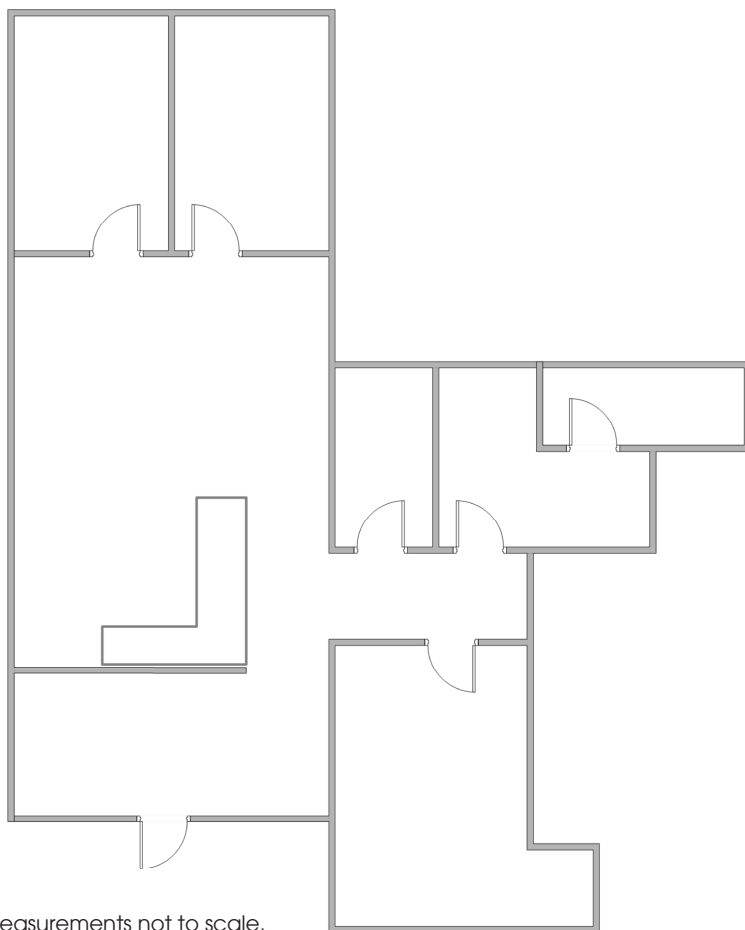
- S-R Zoning, City of Scottsdale
- Suite J-108, ±1,195 SF - Suite Available
- Located on the NEC of Shea Blvd & Hayden Rd
- Floor Plan Attached
- Very Competitive Rates at \$22.75 Full Service

**Craig Trbovich**  
D: 480.522.2799  
M: 602.549.4676  
ctrbovich@cpiaz.com

**Ron Schooler**  
D: 480.522.2770  
M: 602.469.3750  
rschooler@cpiaz.com

 **COMMERCIAL PROPERTIES INC.**  
Locally Owned. Globally Connected. 

TEMPE: 2323 W. University Drive, Tempe, AZ 85281 | 480.966.2301  
SCOTTSDALE: 8777 N. Gainey Center Dr., Suite 245, Scottsdale, AZ 85258 | www.cpiaz.com



Suite J-108,  $\pm 1,195$  SF - Suite Available  
Consisting of Reception, 4 Private Offices,  
Open Bullpen, and Storage.

Note: Approximate measurements not to scale.

**Craig Trbovich**  
D: 480.522.2799  
M: 602.549.4676  
ctrbovich@cpiaz.com

**Ron Schooler**  
D: 480.522.2770  
M: 602.469.3750  
rschooler@cpiaz.com



**COMMERCIAL PROPERTIES INC.**

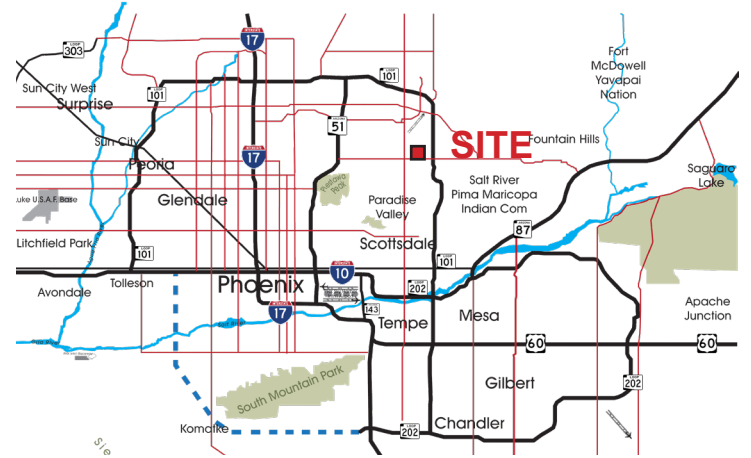
Locally Owned. Globally Connected. CFP/FAE International

TEMPE: 2323 W. University Drive, Tempe, AZ 85281 | 480.966.2301  
SCOTTSDALE: 8777 N. Gainey Center Dr., Suite 245, Scottsdale, AZ 85258 | www.cpiaz.com



Hayden Park  
10613 N Hayden Rd Scottsdale, AZ 85260

Office Suite For Lease \$22.75 F/S



Craig Trbovich  
D: 480.522.2799  
M: 602.549.4676  
ctrbovich@cpiaz.com

Ron Schooler  
D: 480.522.2770  
M: 602.469.3750  
rschooler@cpiaz.com



**COMMERCIAL PROPERTIES INC.**

Locally Owned. Globally Connected. CFR/FAC International

TEMPE: 2323 W. University Drive, Tempe, AZ 85281 | 480.966.2301  
SCOTTSDALE: 8777 N. Gainey Center Dr., Suite 245, Scottsdale, AZ 85258 | www.cpiaz.com

The information contained herein has been obtained from various sources. We have no reason to doubt its accuracy; however, J & J Commercial Properties, Inc. has not verified such information and makes no guarantee, warranty or representation about such information. The prospective buyer or lessee should independently verify all dimensions, specifications, floor plans, and all information prior to the lease or purchase of the property. All offerings are subject to price change, prior sale, lease, or withdrawal from the market without prior notice. Effective Date: 11 05 20