



FINANCIAL CENTER

1215 Fourth Avenue
Seattle, Washington 98101

For further information,
please contact:

Damon McCartney

(206) 838-7633

mccartney@broderickgroup.com

David Greenwood

(206) 838-7635

greenwood@broderickgroup.com



Broderick Group, Inc.
10500 NE 8th Street, Suite 900
Bellevue, WA 98004
main: (206) 838-5775

broderickgroup.com

The information contained herein has been given to us by the owner or sources which we deem reliable. We have no reason to doubt its accuracy, but we do not guarantee it. Prospective tenants should carefully verify all information contained herein.

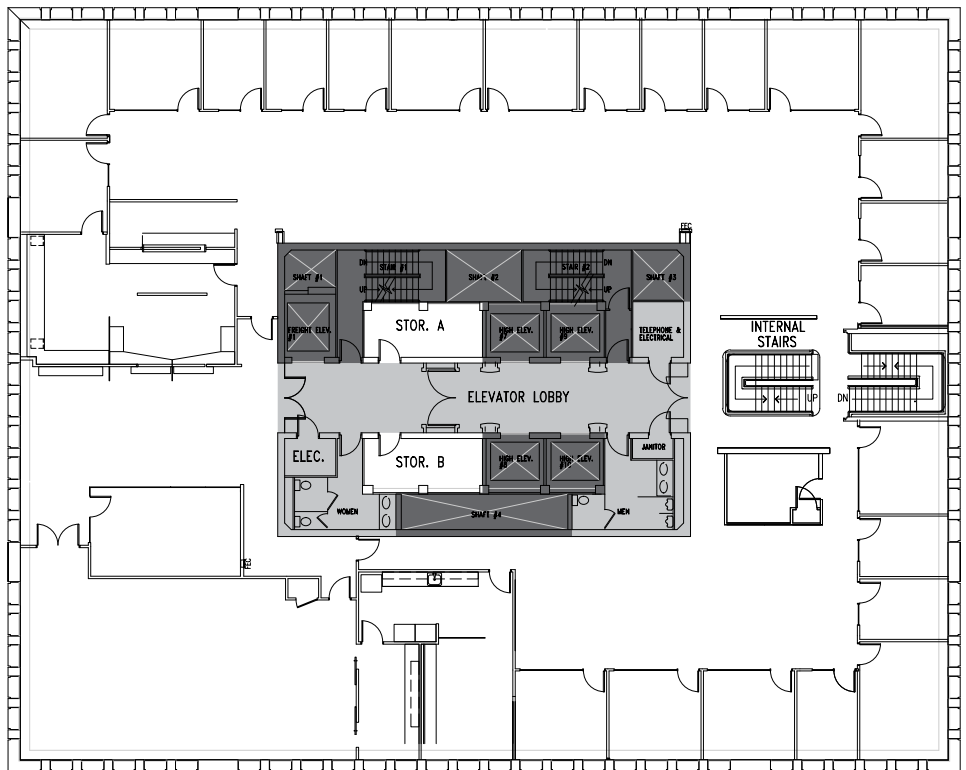


For virtual tour, visit:

bit.ly/398MwOd

SUITE 2600

14,967 RSF



SPACE FEATURES

- » Available now!
- » West facing views
- » Large breakout room located on the Southeast section of the building
- » Contiguous with floors 25 & 27 (44,901 RSF combined)
- » Interstitial staircase connecting floors 25 - 27



METROTRACT
SEATTLE