



Restaurant End Cap Coming Available

I-29 & NW Barry Road (SEQ)

6141-6151 NW Barry Road, Kansas City, MO



LEASE RATE: \$35/SF NNN | 4,378 SF - 5,500 SF

DEMOGRAPHICS

	1 mile	3 miles	5 miles
Estimated Population	9,897	51,042	113,526
Avg. Household Income	\$80,959	\$88,663	\$89,700

- Located on Barry Road Corridor
- All restaurant infrastructure in place
- Former Panera Bread space
- Excellent visibility and signage to Barry Road
- Immediate access to I-29
- Heavy traffic counts



CLICK HERE TO VIEW MORE LISTING INFORMATION

For More Information Contact:

Exclusive Agents

PHIL PECK, CCIM | 816.412.7364 | ppeck@blockandco.com

JODY MINDER | 816.916.4039 | jminder@blockandco.com

DAVID BLOCK | 816.412.7400 | dblock@blockandco.com





Restaurant End Cap Coming Available

I-29 & NW Barry Road (SEQ)
6141-6151 NW Barry Road, Kansas City, MO

4,378 SF - 5,500 SF
AVAILABLE FOR LEASE

AERIAL





Restaurant End Cap Coming Available

I-29 & NW Barry Road (SEQ)
6141-6151 NW Barry Road, Kansas City, MO

4,378 SF - 5,500 SF
AVAILABLE FOR LEASE

AERIAL



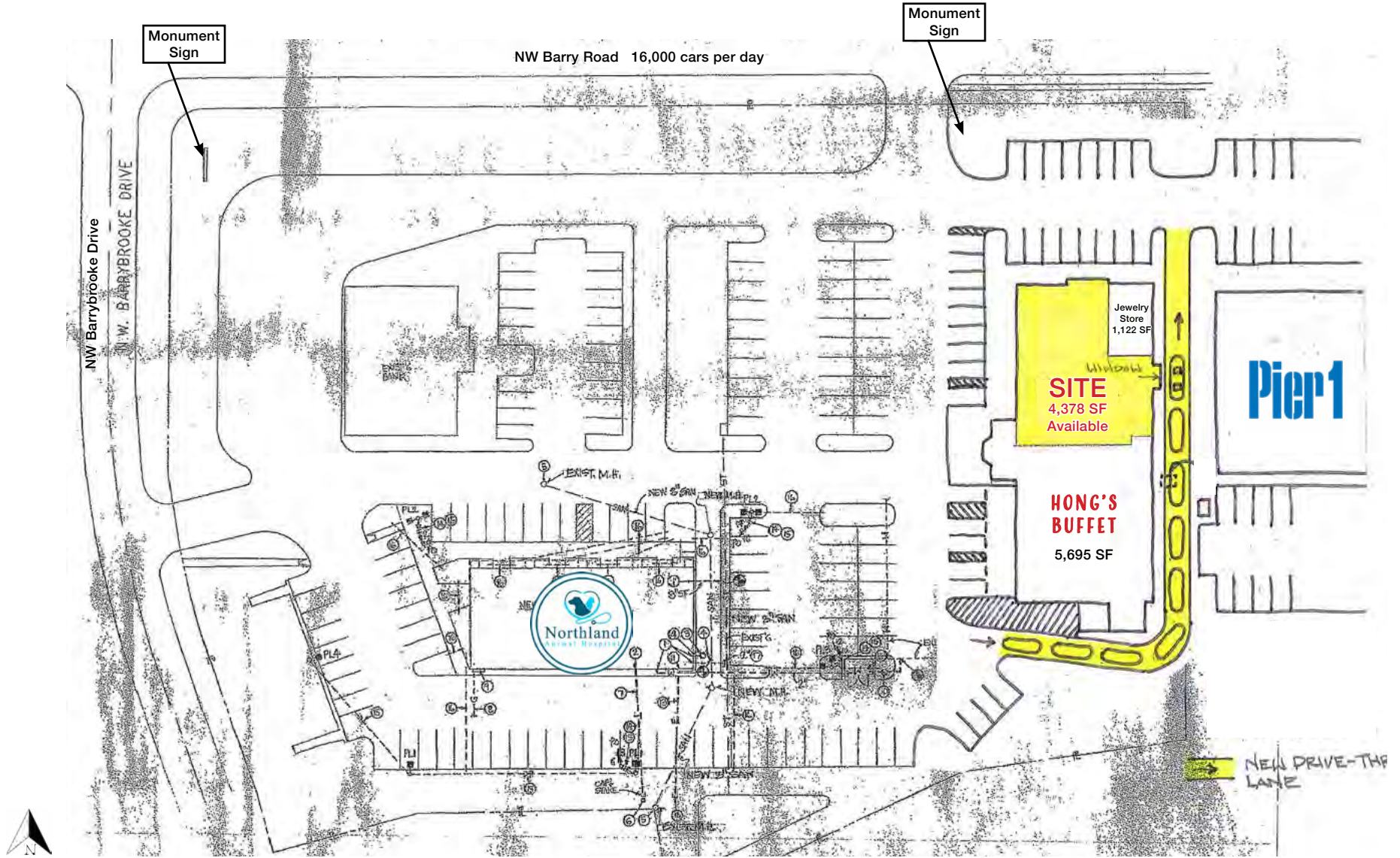


Restaurant End Cap Coming Available

I-29 & NW Barry Road (SEQ)
6141-6151 NW Barry Road, Kansas City, MO

4,378 SF - 5,500 SF
**AVAILABLE
FOR LEASE**

CONCEPTUAL DRIVE-THRU PLAN



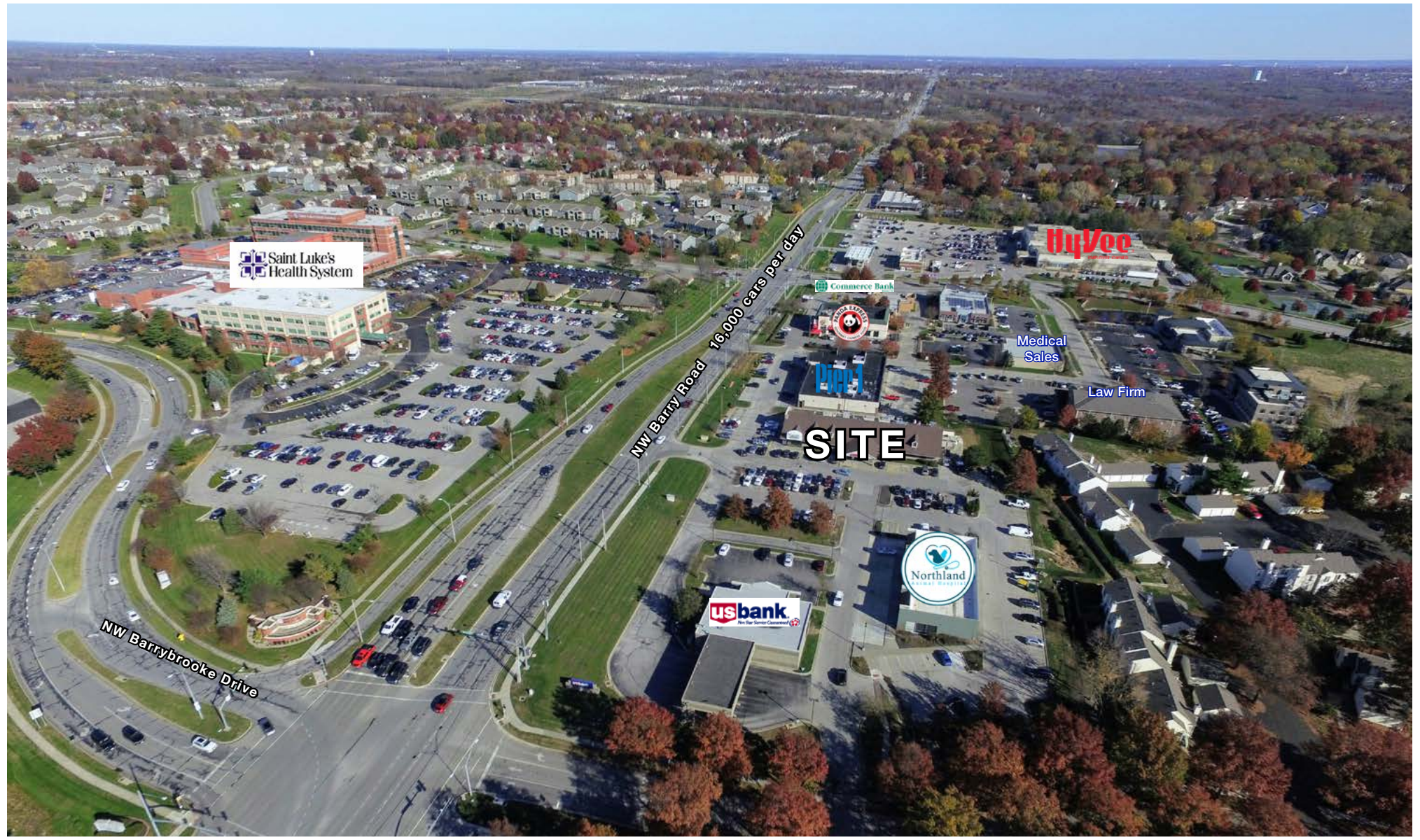


Restaurant End Cap Coming Available

I-29 & NW Barry Road (SEQ)
6141-6151 NW Barry Road, Kansas City, MO

4,378 SF - 5,500 SF
**AVAILABLE
FOR LEASE**

DRONE AERIAL

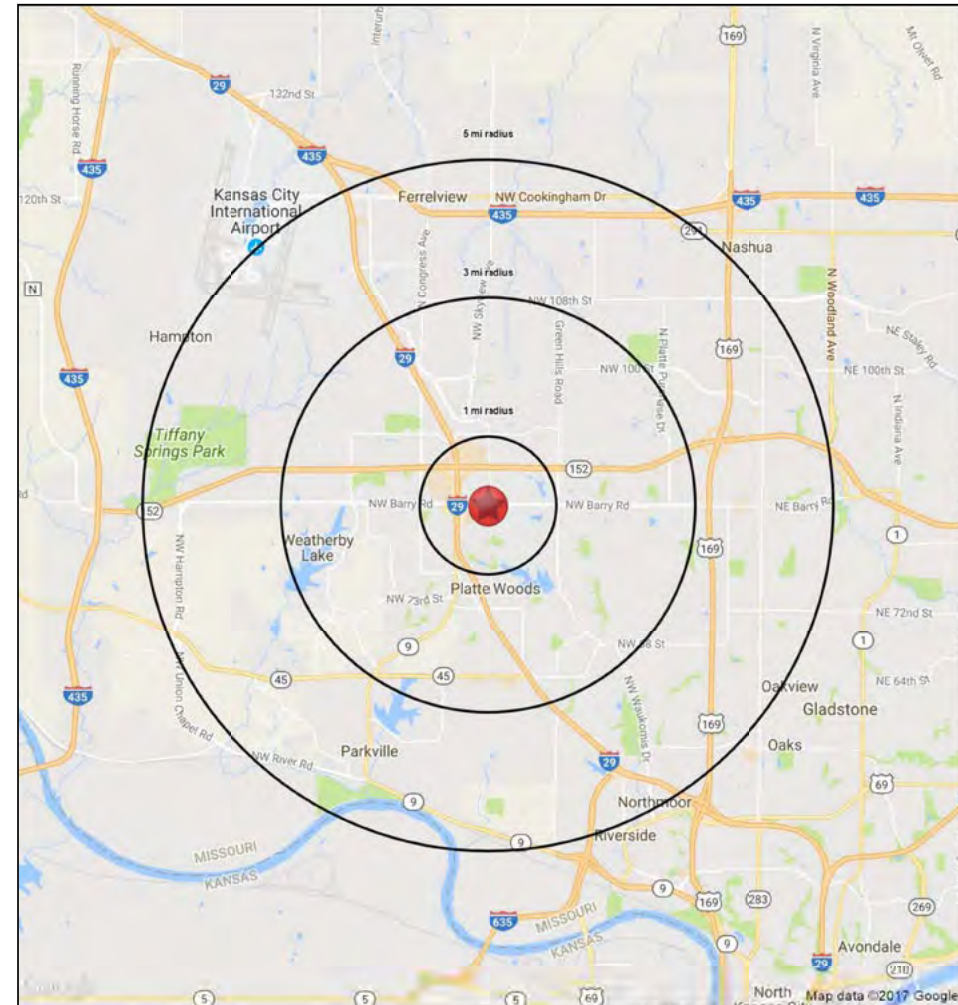
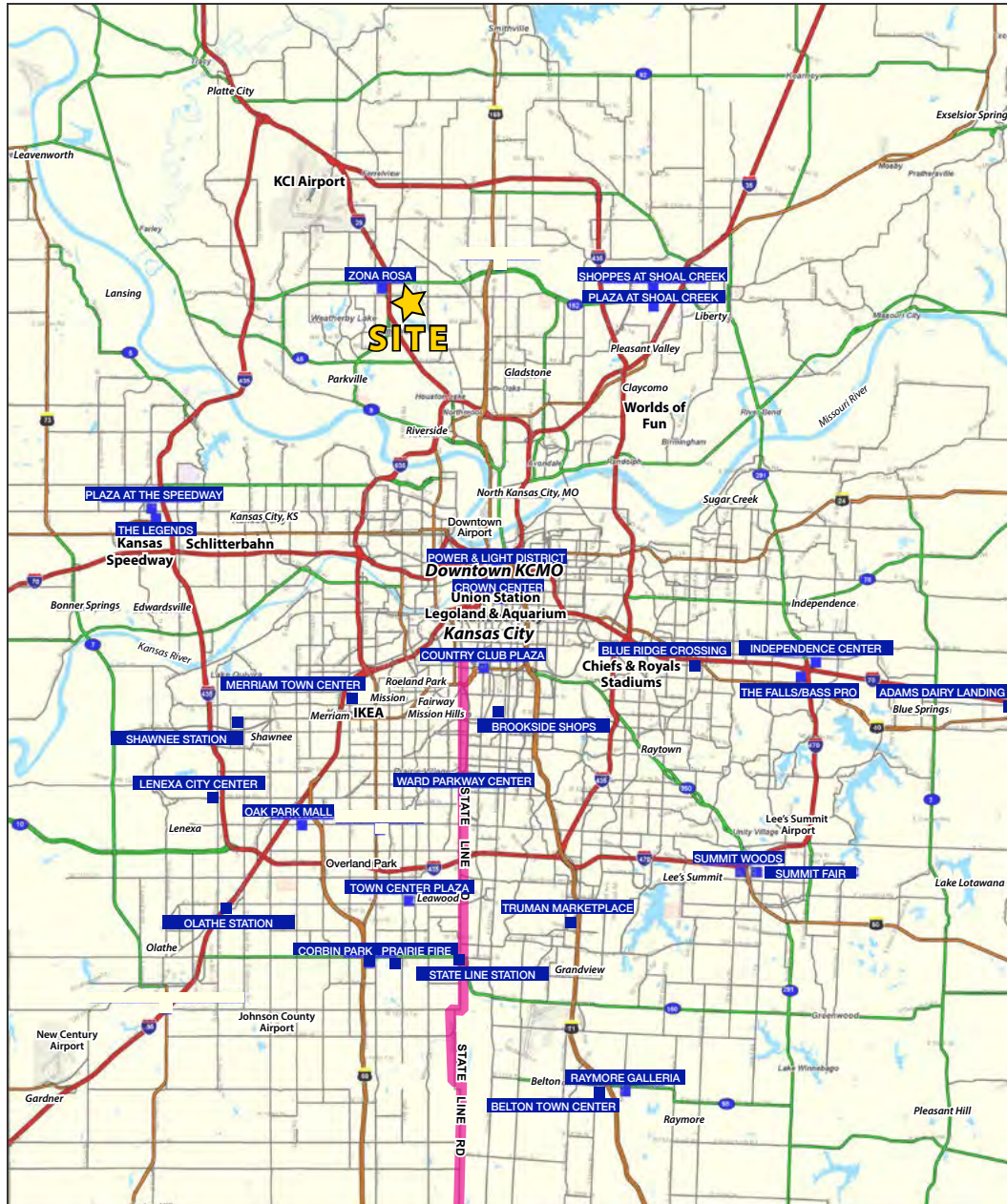




Restaurant End Cap Coming Available

I-29 & NW Barry Road (SEQ)
6141-6151 NW Barry Road, Kansas City, MO

**4,378 SF - 5,500 SF
AVAILABLE
FOR LEASE**





Restaurant End Cap Coming Available

I-29 & NW Barry Road (SEQ)

6141-6151 NW Barry Road, Kansas City, MO

6141-6151 NW Barry Road

Kansas City, MO 64151

1 mi radius 3 mi radius 5 mi radius

		1 mi radius	3 mi radius	5 mi radius
POPULATION	2018 Estimated Population	9,897	51,042	113,526
	2023 Projected Population	11,191	57,426	126,088
	2010 Census Population	9,273	44,944	100,981
	2000 Census Population	7,785	35,814	86,781
	Projected Annual Growth 2018 to 2023	2.6%	2.5%	2.2%
	Historical Annual Growth 2000 to 2018	1.5%	2.4%	1.7%
	2018 Median Age	37.3	36.9	37.1
HOUSEHOLDS	2018 Estimated Households	4,381	21,922	46,939
	2023 Projected Households	4,657	23,196	49,476
	2010 Census Households	4,101	19,347	41,658
	2000 Census Households	3,504	15,014	35,178
	Projected Annual Growth 2018 to 2023	1.3%	1.2%	1.1%
	Historical Annual Growth 2000 to 2018	1.4%	2.6%	1.9%
RACE AND ETHNICITY	2018 Estimated White	75.7%	79.8%	80.4%
	2018 Estimated Black or African American	13.1%	10.4%	9.7%
	2018 Estimated Asian or Pacific Islander	4.6%	4.2%	3.8%
	2018 Estimated American Indian or Native Alaskan	0.5%	0.5%	0.5%
	2018 Estimated Other Races	6.1%	5.1%	5.7%
	2018 Estimated Hispanic	7.9%	7.5%	7.8%
INCOME	2018 Estimated Average Household Income	\$80,959	\$88,663	\$89,700
	2018 Estimated Median Household Income	\$63,841	\$75,221	\$74,102
	2018 Estimated Per Capita Income	\$35,836	\$38,097	\$37,123
EDUCATION (AGE 25+)	2018 Estimated Elementary (Grade Level 0 to 8)	2.1%	1.2%	1.6%
	2018 Estimated Some High School (Grade Level 9 to 11)	1.5%	2.7%	4.0%
	2018 Estimated High School Graduate	22.0%	20.2%	22.5%
	2018 Estimated Some College	22.5%	23.7%	23.6%
	2018 Estimated Associates Degree Only	10.3%	9.0%	8.5%
	2018 Estimated Bachelors Degree Only	26.4%	27.3%	25.6%
	2018 Estimated Graduate Degree	15.2%	15.9%	14.2%
BUSINESS	2018 Estimated Total Businesses	782	1,632	3,809
	2018 Estimated Total Employees	9,746	19,150	42,725
	2018 Estimated Employee Population per Business	12.5	11.7	11.2
	2018 Estimated Residential Population per Business	12.7	31.3	29.8

