

# FOR LEASE

RIVER VIEW PLAZA SHOPPING CENTER  
240-320 W GENESEE  
SAGINAW, MI 48602



## PROPERTY FEATURES:

- For Lease: 1,600 SF - 18,400 SF of contiguous space available
- Join national tenants Aaron's, H&R Block, Citi Trends, Rent-A-Center, & Advance America
- Located in close proximity to downtown Saginaw
- Easy access to I-675
- Ample parking available
- Asking lease rate: Negotiable



FOR MORE INFORMATION PLEASE CONTACT:

**JOEL KESTENBERG**

joel.kestenberg@freg.com

**ALAN STERN**

alan.stern@freg.com

**248.324.2000**

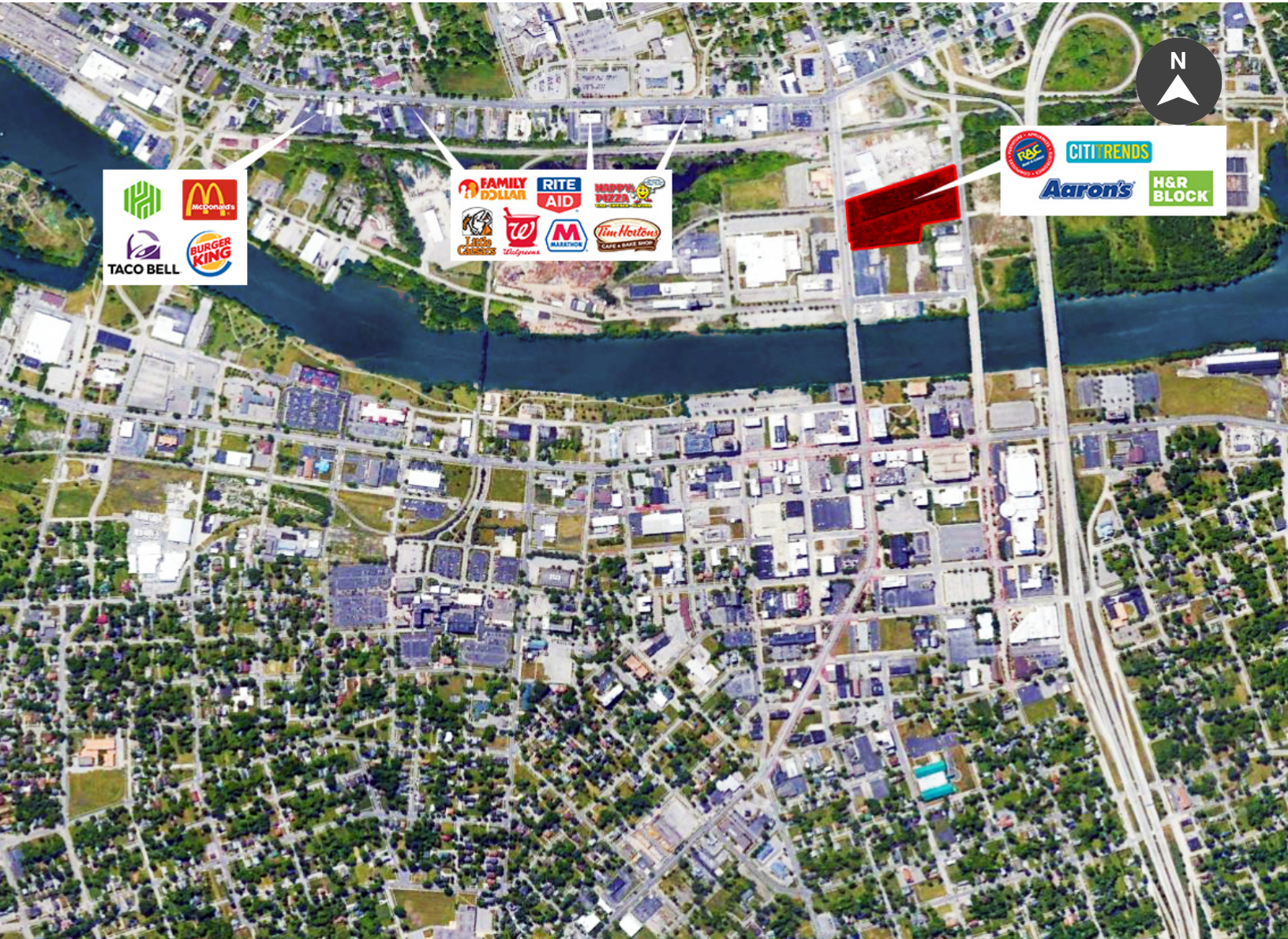
**eCODE 185**

The information provided herein along with any attachment(s) was obtained from sources believed to be reliable, however, Friedman Real Estate makes no guarantees, warranties, or representations as to the completeness or accuracy of such information and legal counsel is advised. All information provided is subject to verification and no liability for reliance on such information or errors or omissions is assumed. The presentation of this property is submitted subject to errors, omissions, change of price or conditions, prior sale or lease, or withdrawal without notice. Copyright © 2018 Friedman Real Estate. All rights reserved.



# FOR LEASE

RIVER VIEW PLAZA SHOPPING CENTER  
240-320 W GENESEE  
SAGINAW, MI 48602



## TRAFFIC COUNTS

INTERSECTION	CARS PER DAY
Davenport & W Michigan Ave	13,000
S Washington St & E Remington St	15,000
Rust Avenue & Fordney St	16,000

## DEMOGRAPHICS

	1 MILE	3 MILES	5 MILES
Total Households	2,720	27,481	49,278
Total Population	7,499	73,016	126,970
Average HH Income	\$35,590	\$37,910	\$44,325

FOR MORE INFORMATION PLEASE CONTACT:

**JOEL KESTENBERG** joel.kestenberg@freg.com

**ALAN STERN** alan.stern@freg.com

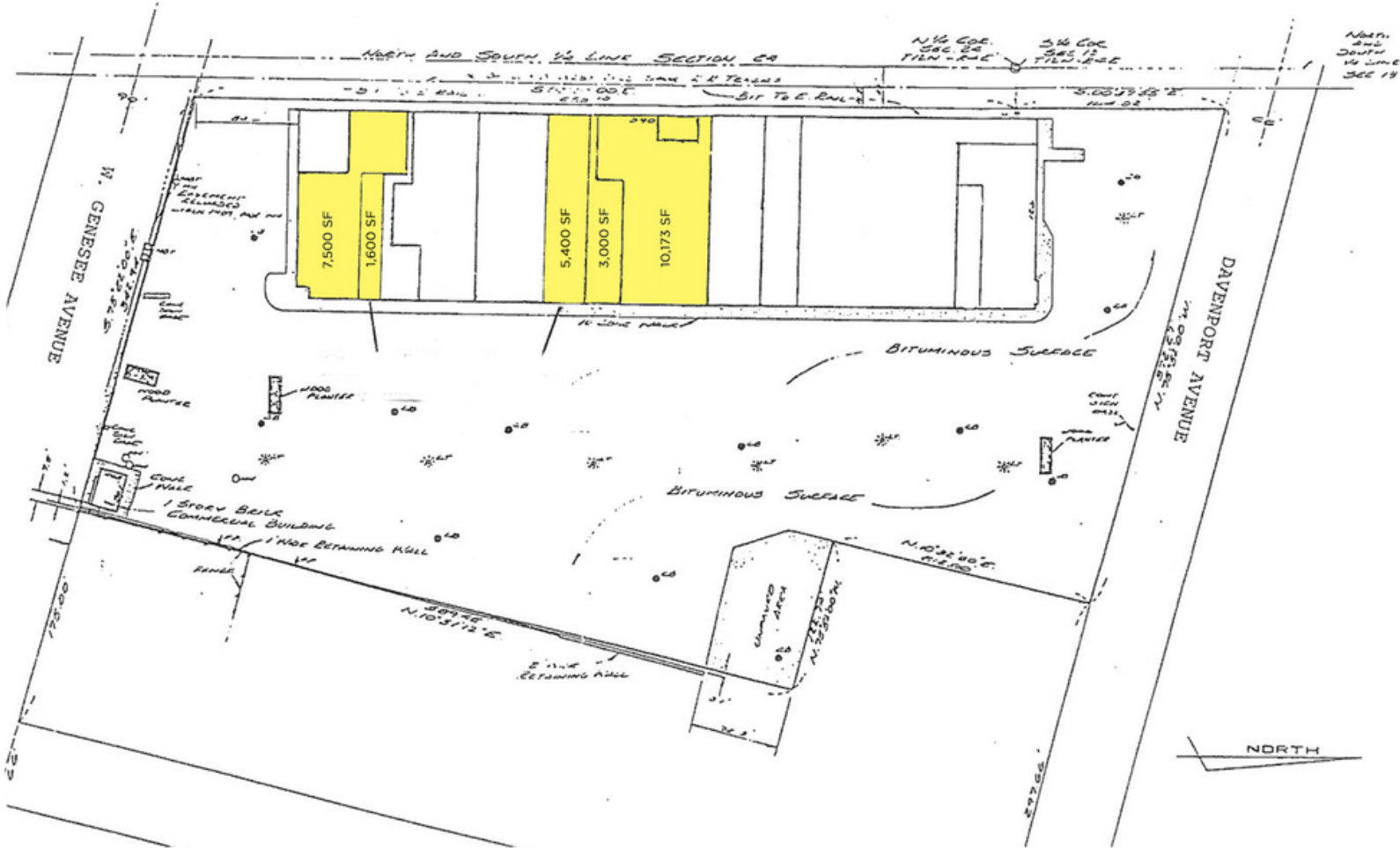
**248.324.2000**

**eCODE 185**



# FOR LEASE

RIVER VIEW PLAZA SHOPPING CENTER  
240-320 W GENESEE  
SAGINAW, MI 48602



LEGEND

○	MANHOLE
●	CATCH BASIN
⊙	LIGHT POLE
⊕	UTILITY POLE
—	FENCE
▭	CONCRETE

FOR MORE INFORMATION PLEASE CONTACT:

**JOEL KESTENBERG** joel.kestenberg@freg.com

**ALAN STERN** alan.stern@freg.com

**248.324.2000**

**eCODE 185**