

FOR SALE

**1762- 1774
ROUTE 209 & RT 715
BRODHEADSVILLE, PA 18322**

COMMERCIAL DEVELOPMENT SITE



- | | |
|--|--------|
| A. 1762 ROUTE 209 BRODHEADSVILLE, PA 18322 | .99 AC |
| B. 1772 ROUTE 209 BRODHEADSVILLE, PA 18322 | 3.2 AC |
| C. ROUTE 209 BRODHEADSVILLE, PA 18322 | .32 AC |
| D. 1774 ROUTE 209 BRODHEADSVILLE, PA 18322 | .54 AC |



+/- 5 ACRE PRIME COMMERCIAL DEVELOPMENT SITE

**Traffic Counts
18,000 VPD**

Fabulous development opportunity at the signalized intersection of Rt. 209 and Rt. 715 in Brodheadsville, PA. Site is located within Chestnuthill Township. Property is zoned VC- Village Commercial. Directly across from St. Lukes Family Practice- Brodheadsville and diagonal to Wawa convenience store. This is the best commercial development parcel in the market area!

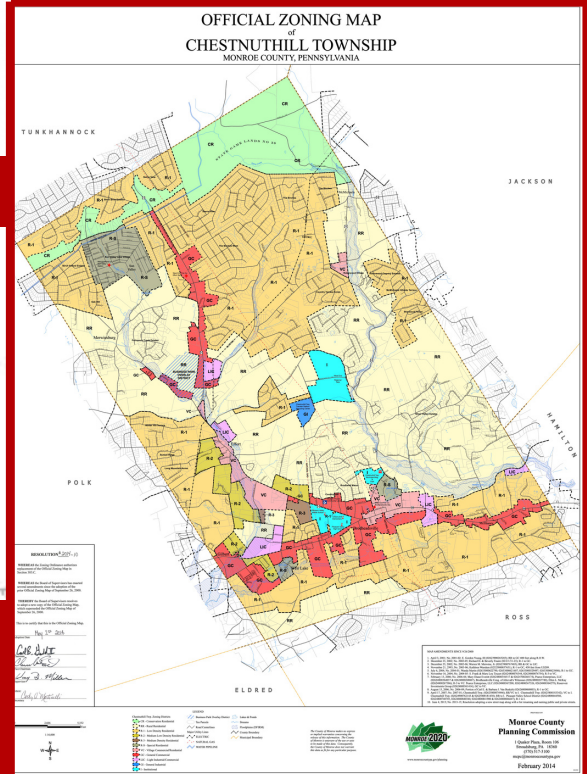
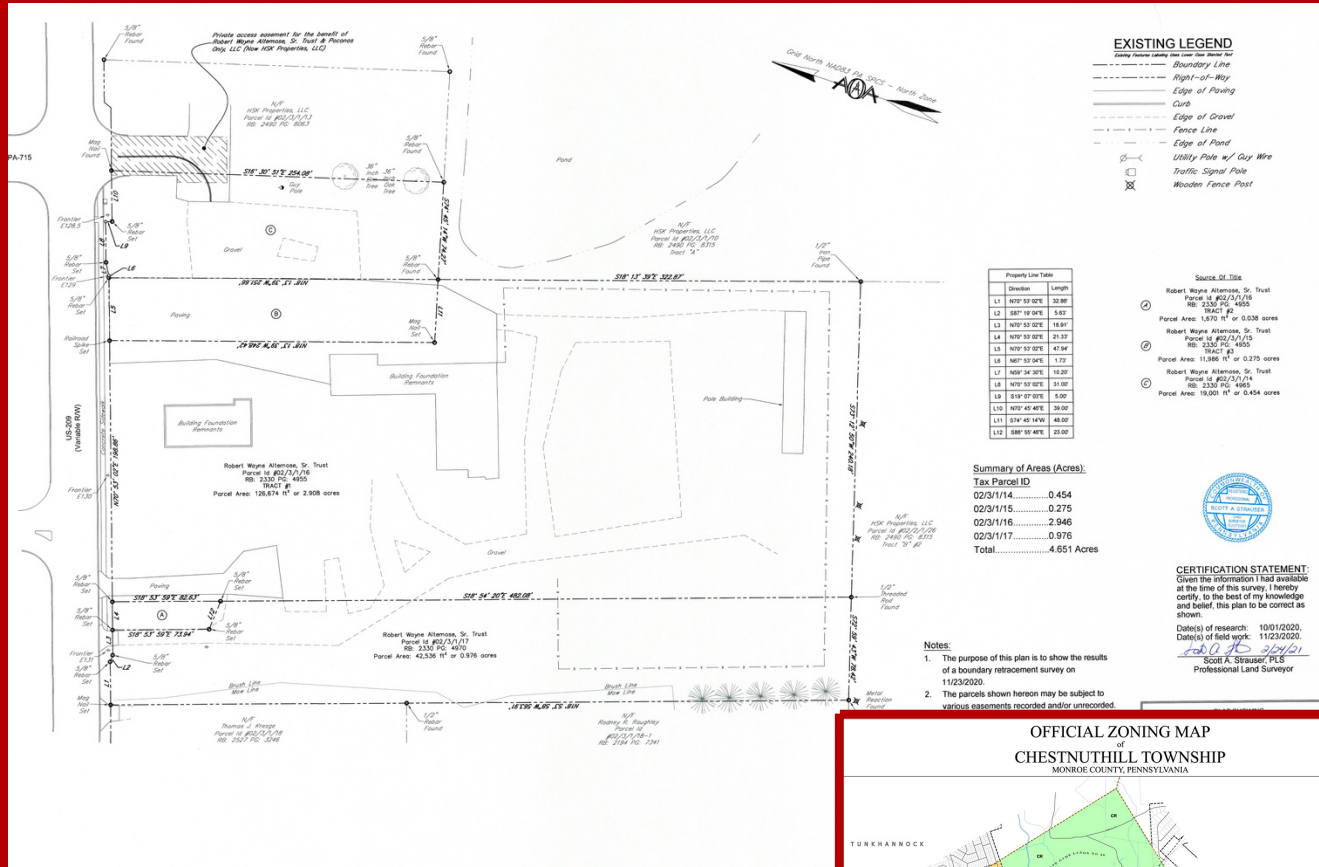
kw
KELLERWILLIAMS
REAL ESTATE
Each office is individually owned and operated

James Balliet
President
O 610-435-1800
C 610-972-6808
James@JBPropertyGroup.com
JBPropertyGroup.com

THE James Balliet
PROPERTY GROUP



Property is +/- 5 Acres and is situated at
 signaled intersection of Rt. 209 and Rt. 715.
 Traffic counts in excess of 18,000 VPD.



kw
KELLERWILLIAMS
 REAL ESTATE
 Each office is individually owned and operated

James Balliet
 President
 O 610-435-1800
 C 610-972-6808
 James@JBPropertyGroup.com
 JBPropertyGroup.com

THE James Balliet
 PROPERTY GROUP