

## Northlake Building

8330 Maltby Road  
Woodinville, WA

Great manufacturing building  
with paved yard

Available October 2011

19,630 SF with 3,630 SF office

34,585 SF with 4,630 SF office

6 dock high doors

3 oversized grade level doors

Concrete tilt-up construction

Built in 1985

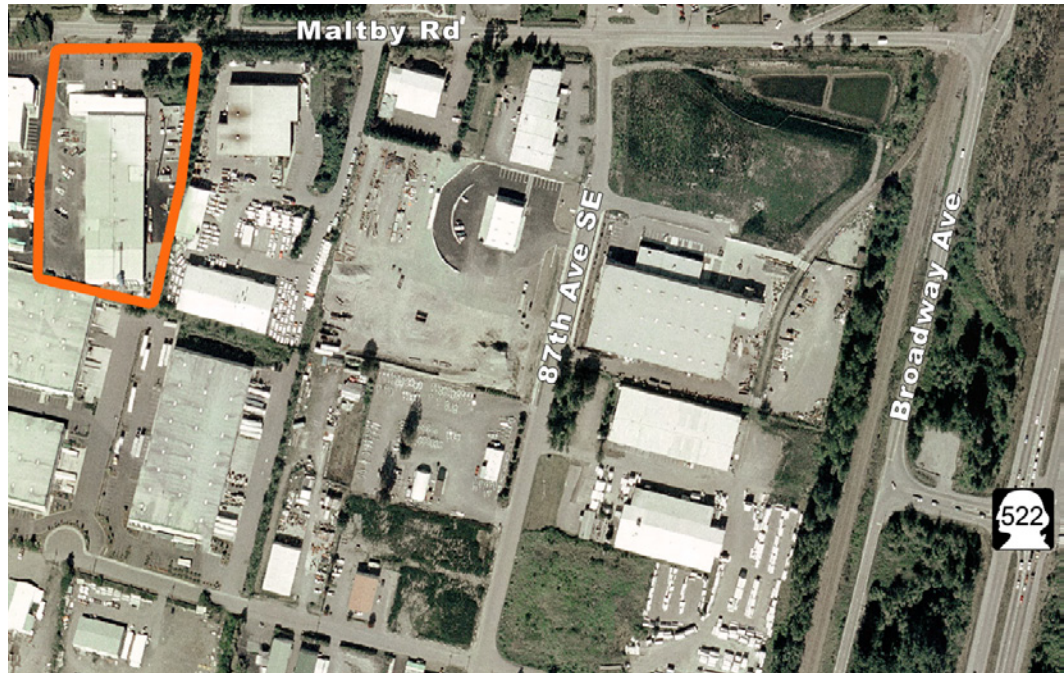
18' to 20' ceilings

Heavy power

Paved, fenced yard area

Great location on SR-524

Aggressive rates with low triple  
net charges



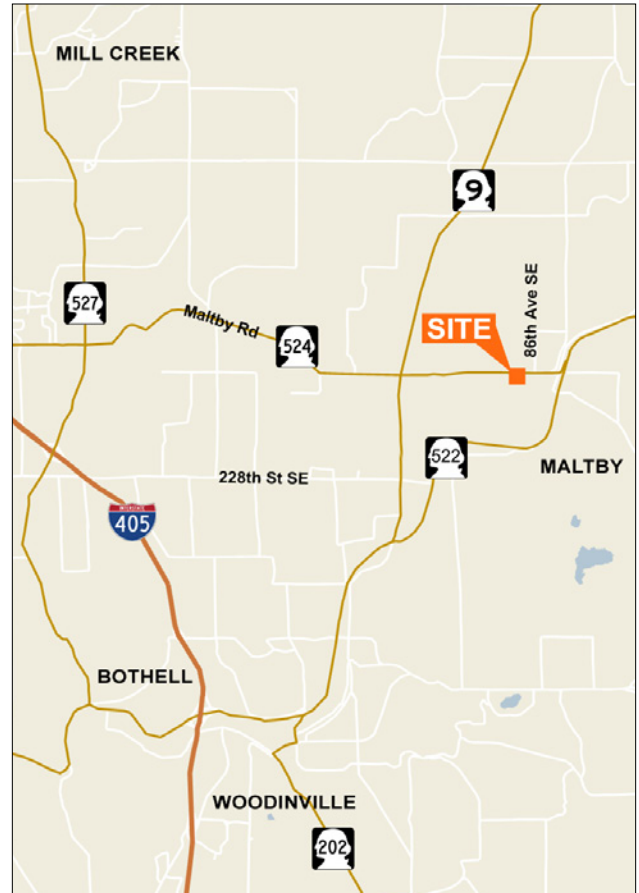
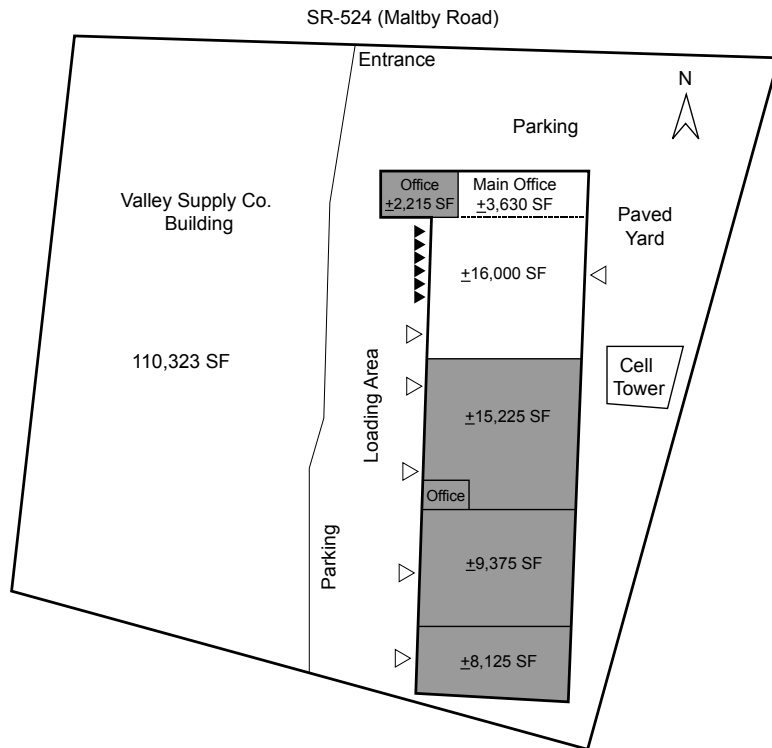
### Contact

**Roger Thorn**  
425.450.1120  
rthorn@kiddermathews.com

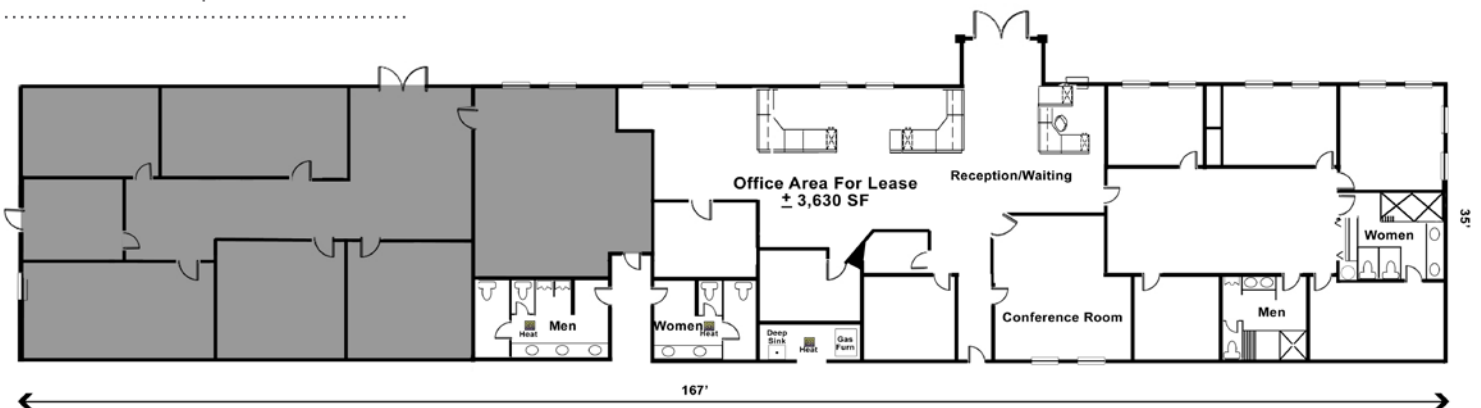
**Zach Vall-Spinosa**  
425.450.1115  
zachv@kiddermathews.com

## Northlake Building

Site plan



Main office floor plan



### Contact

**Roger Thorn**  
425.450.1120  
rthorn@kiddermathews.com

**Zach Vall-Spinosa**  
425.450.1115  
zachv@kiddermathews.com