

PROFESSIONAL OFFICE FOR LEASE

COOK STREET BUSINESS AREA

AVAILABLE
Jan. 1, 2021



75150 Sheryl Avenue, Ste E, Palm Desert
Off Cook Street, N. of Fred Waring

SIZE: 2,000 SF
PRICE: \$1.00/ SF Modified Gross



GREAT LOCATION!

- Suite E - 2,000 SF Available
- Large Bullpen Area with Cubicle Furniture
- Or Remove furniture for Large Pen Space
- 3 Private Offices
- Built in 1990
- Plenty of Parking
- IP (Industrial Park) Zoning
- APN: 634-260-029



www.baxleyproperties.com
Phone: 760-773-3310
Fax: 760-773-3013
73712 Alessandro Drive, Ste B-4, Palm Desert, CA 92260

Donna Rodriguez
donna@baxleyproperties.com
760-773-6017
DRE# 01928453

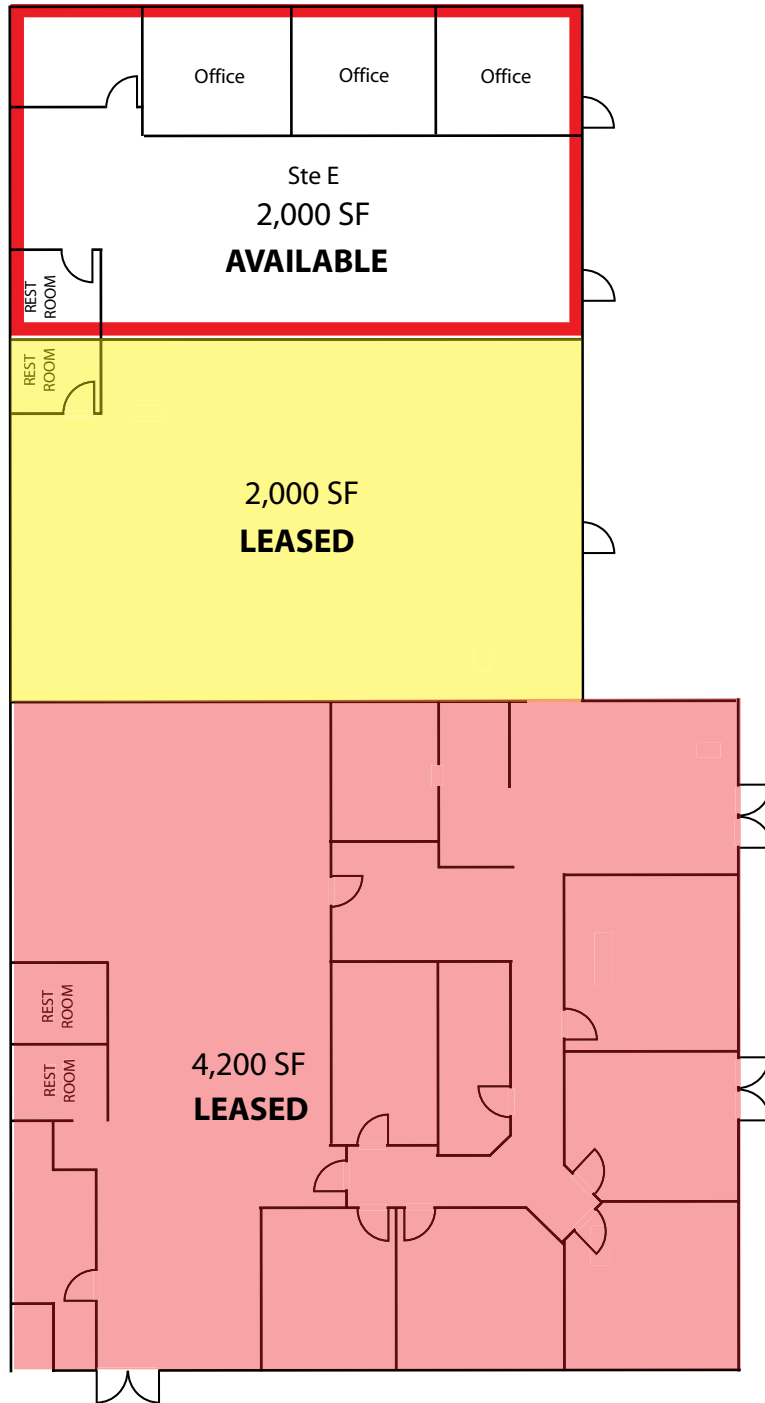
DISCLAIMER:
The information above has been obtained from sources believed reliable. While we do not doubt its accuracy, we have not verified it and make no guarantee, warranty or representation about it. It is your responsibility to independently confirm its accuracy and completeness. Any projections, opinions, assumptions or estimates used are for example only, and do not represent the current or future performance of the property.

11/13/2020

PROFESSIONAL OFFICE FOR LEASE

75150 Sheryl Avenue, Suite E, Palm Desert, CA

Floor Plan



Interior Photos



DISCLAIMER:

The information above has been obtained from sources believed reliable. While we do not doubt its accuracy, we have not verified it and make no guarantee, warranty or representation about it. It is your responsibility to independently confirm its accuracy and completeness. Any projections, opinions, assumptions or estimates used are for example only, and do not represent the current or future performance of the property.