



FORMER CARENOW - GRAPEVINE MILLS MALL AVAILABLE

8235 Douglas Ave
Suite 720
Dallas, Texas 75225
T 214.378.1212
venturedfw.com

2355 E. GRAPEVINE MILLS CIRCLE
GRAPEVINE, TX



BRYAN CORNELIUS BCORNELIUS@VENTUREDFW.COM | ALBERT HERNANDEZ AHERNANDEZ@VENTUREDFW.COM

LOCATION

2355 E. GRAPEVINE MILLS CIRCLE
GRAPEVINE, TX

SIZE

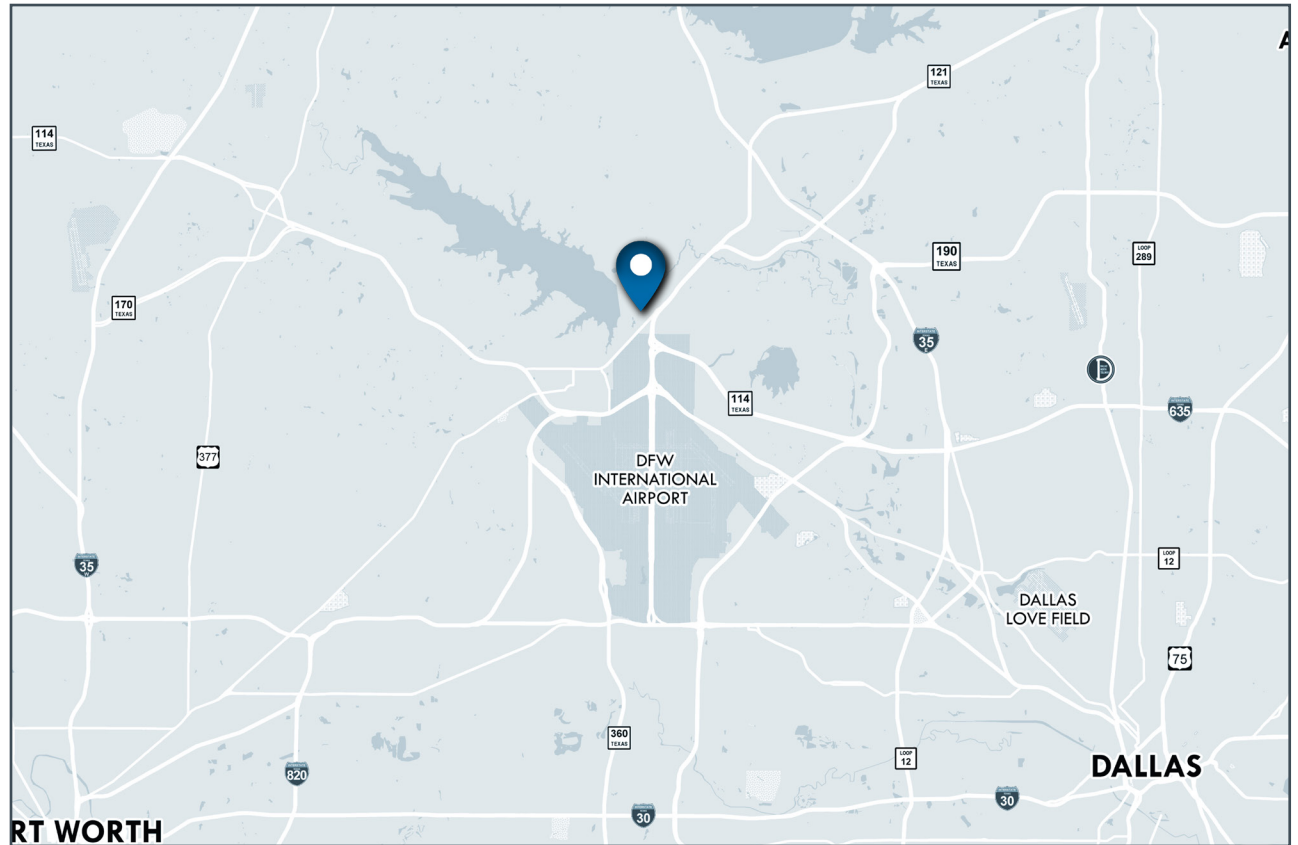
LAND ±23,598 SF **GLA** ±3,855 SF

TRAFFIC COUNTS

SH 121 108,000 VPD **HIGHWAY 26** 19,100 VPD

PROPERTY HIGHLIGHTS

- ★ Pad to Grapevine Mills Outlet Mall, the largest outlet center in North Texas.
- ★ Adjacent to Bass Pro Shops, Cowboys Golf Club, Grapevine Recreational Area, Great Wolf Lodge and numerous hotels and resorts that support DFW Airport.
- ★ Close proximity to DFW Airport.
- ★ Area tenants include Legoland Discovery Center, AMC Theaters, Nike Outlet, Neiman Marcus, Saks Fifth Avenue, Lunar Mini Golf, Forever 21 and Ross.



2018 DEMOGRAPHIC SUMMARY

	1 MILE	3 MILES	5 MILES
EST. POPULATION	2,022	35,524	167,670
EST. DAYTIME POPULATION	6,407	41,260	110,918
EST. AVG. HH INCOME	\$63,600	\$128,209	\$125,158

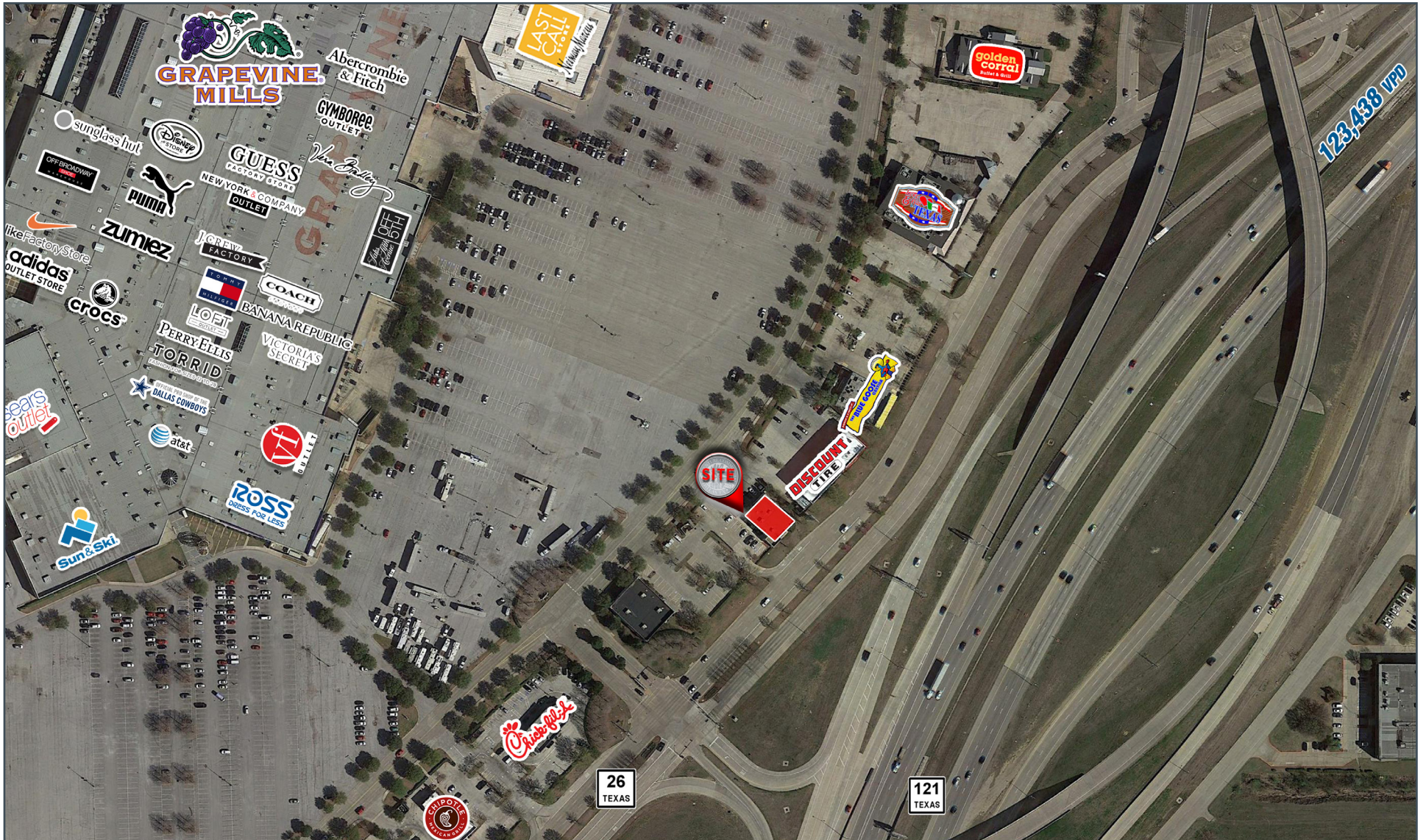
AREA ATTRACTIONS

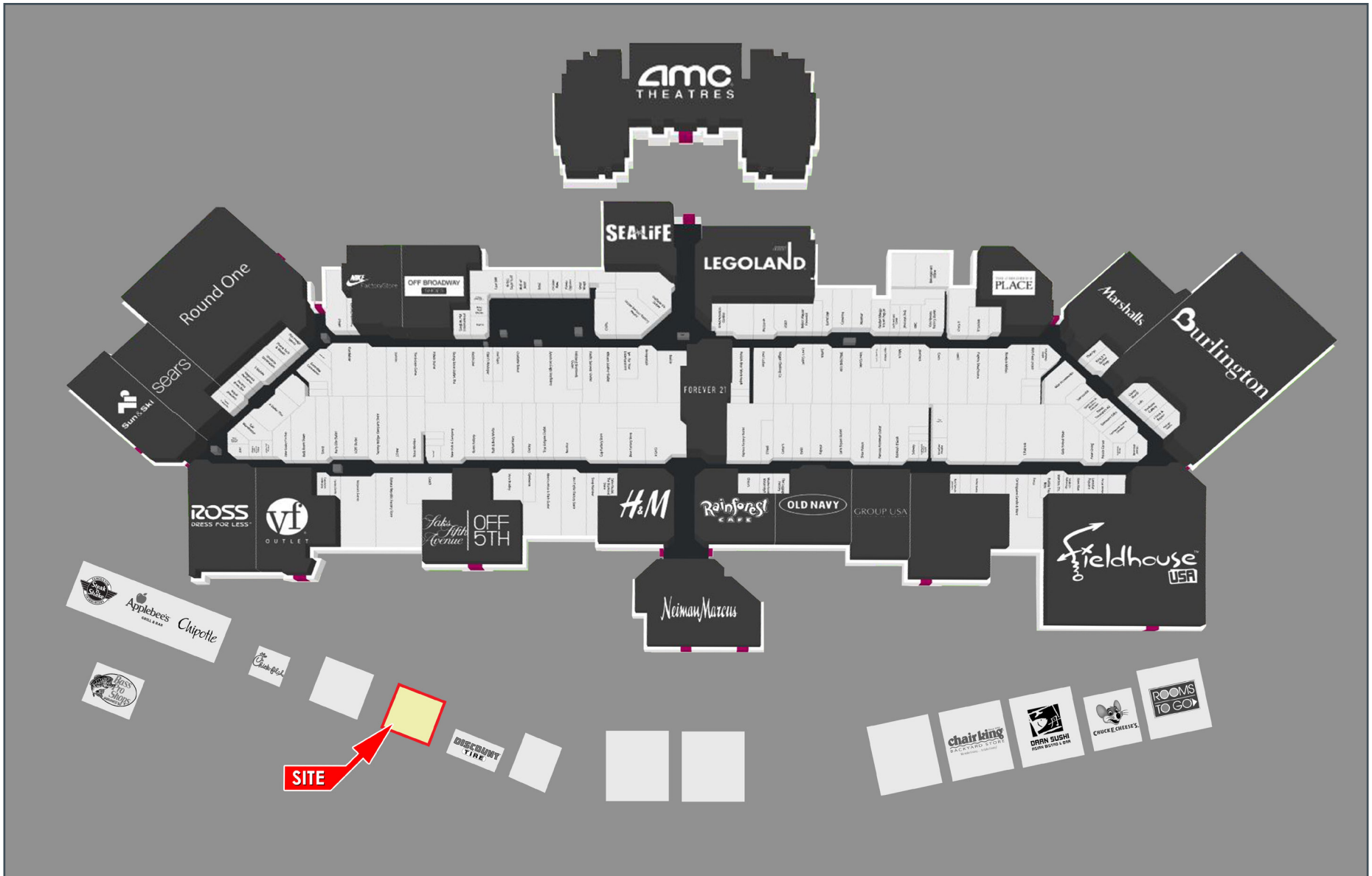


VENTUREDFW.COM

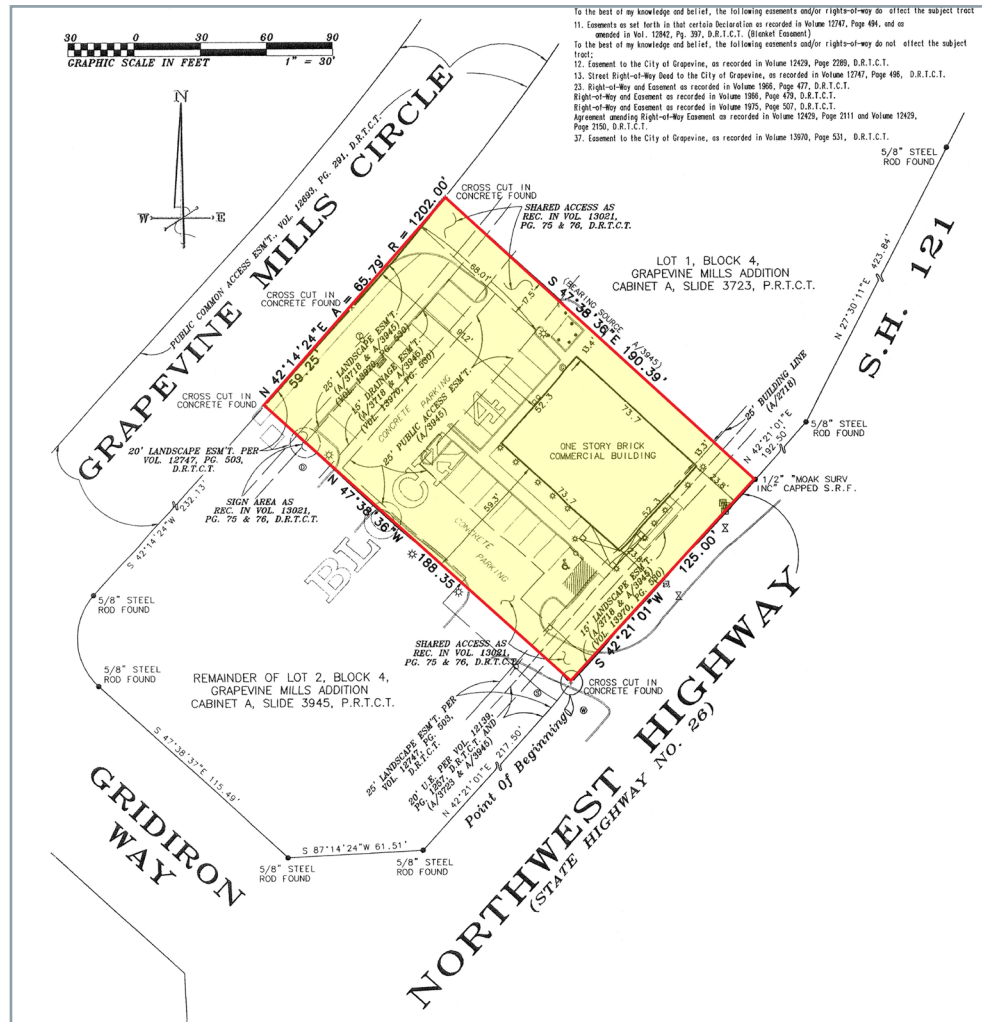
BRYAN CORNELIUS BCORNELIUS@VENTUREDFW.COM
ALBERT HERNANDEZ AHERNANDEZ@VENTUREDFW.COM











8235 Douglas Ave
Suite 720
Dallas, TX 75225
T 214.378.1212
venturedfw.com

BRYAN CORNELIUS
Principal
214.378.1212
bcornelius@venturedfw.com

ALBERT HERNANDEZ
Vice President
214.378.1212
ahernandez@venturedfw.com