

Oswego Towne Square

9 SW Monroe Parkway, Lake Oswego, Oregon



OFFICE FOR LEASE

Oswego Towne Square

9 SW Monroe Parkway, Lake Oswego, Oregon



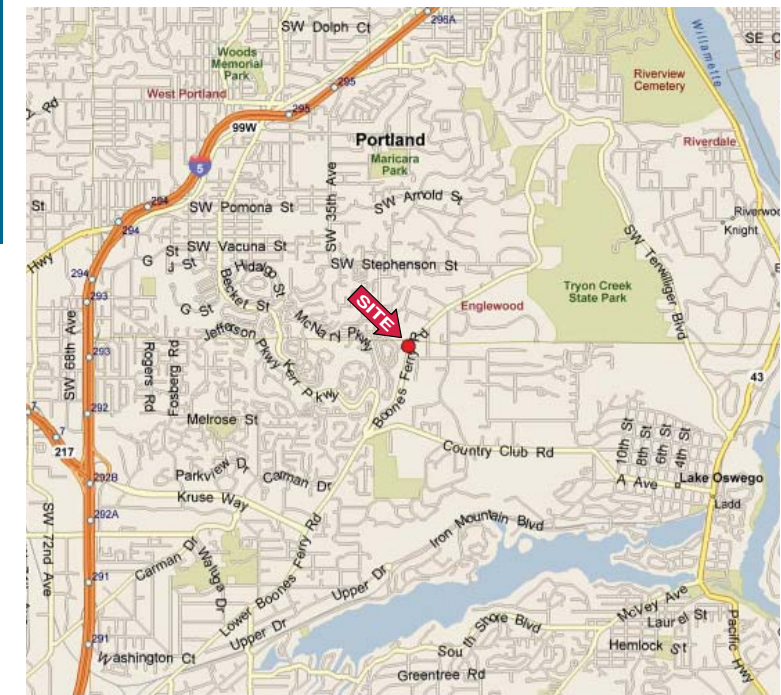
AVAILABLE

Suite 910: 3,567 SF at \$9.00/SF/
Full Service

Suite 295: 760 SF at \$1,450.00/mo/
Full Service

Suite 140: 2,413 SF at \$18.95/SF/
Full Service

- Amenities in adjacent retail complex include Starbucks, New Seasons, a daycare center and various shops. Amenity map on reverse.
- 3-story, 38,230 SF building just off Boones Ferry Road.
- Parking ratio of 3.8/1,000.
- Only 12% load factor.
- Floor plans on inside.



NAI Norris, Beggs & Simpson
Commercial Real Estate Services, Worldwide.

John Medak
tel 503 273 0352
jmedak.com

Contact Information

Jennifer Medak
tel 503 273 0335
jamedak@nbsrealtors.com

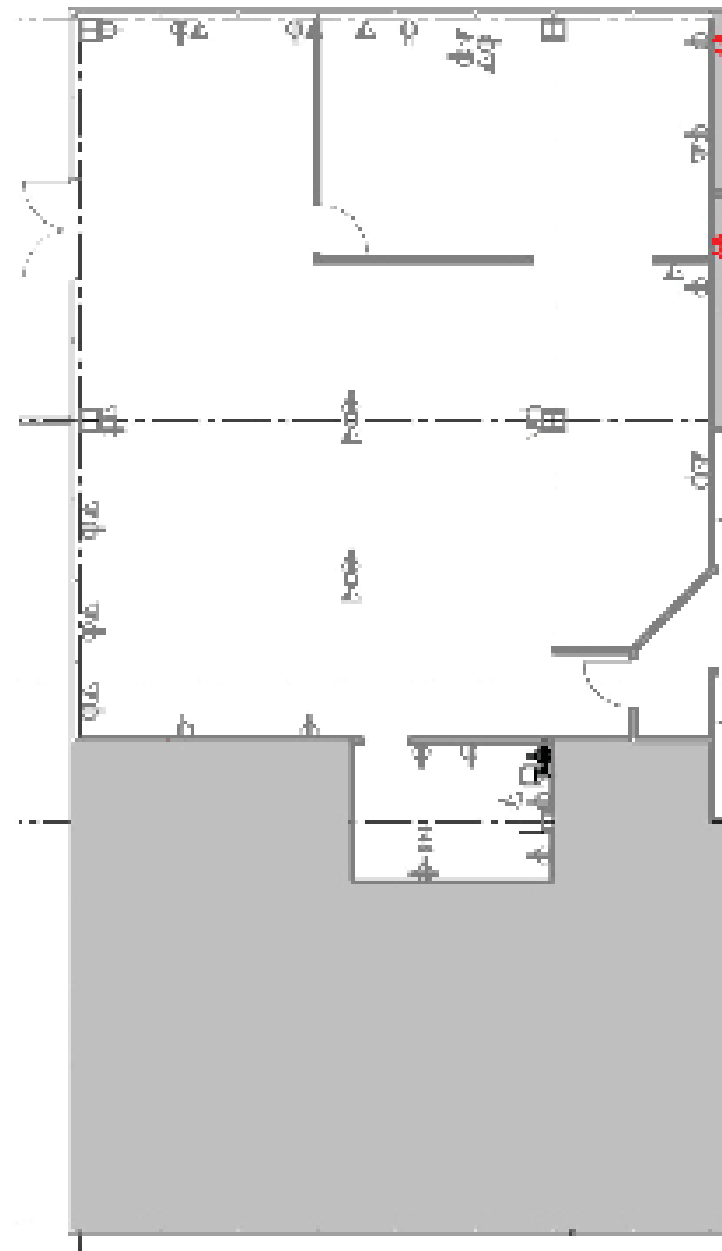
NAI Norris, Beggs & Simpson
Commercial Real Estate Services, Worldwide.

John Medak
tel 503 273 0352
jmedak.com

Contact Information

Jennifer Medak
tel 503 273 0335
jamedak@nbsrealtors.com

Suite 140



Suite 295

