

LINCOLN SQUARE

LINCOLN SQUARE NORTH

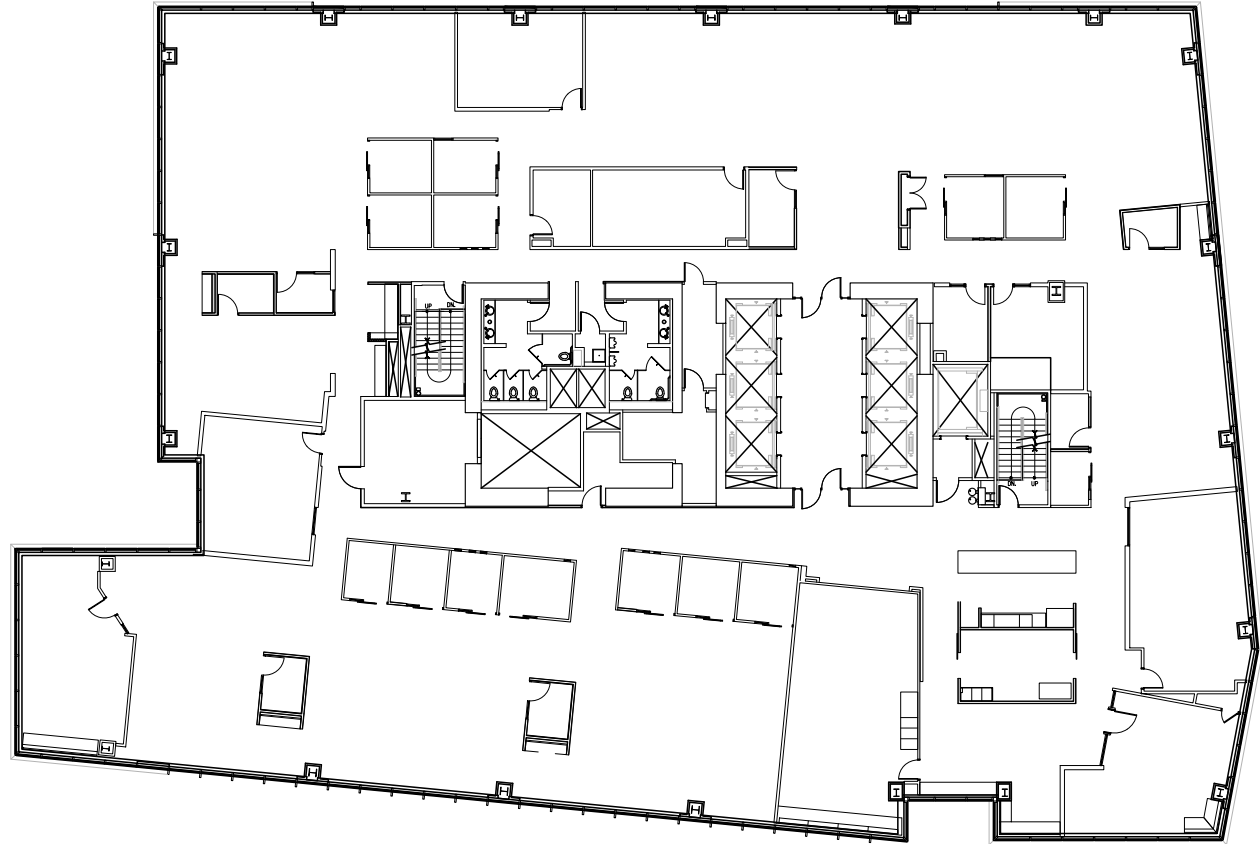
10401 NE 8th
Bellevue, WA 98004

LINCOLN SQUARE NORTH

Floor 27 • 22,401 RSF • As-Built Plan

SPACE FEATURES

- Available with 120 days notice
- Unobstructed Lake Washington and Seattle Skyline views
- Former Microsoft floor
- 16 foot floor to floor ceiling height



For more information or to
schedule a tour, please contact:

PAUL SWEENEY
425.646.5225
sweeney@broderickgroup.com

JIM KINERK
425.646.5221
kinerk@broderickgroup.com

CLAYTON HOLM
425.274.4287
holm@broderickgroup.com



[BACK TO AVAILABILITIES](#)