

2346 LOMBARD STREET

S A N F R A N C I S C O

G R O U N D F L O O R C O M M E R C I A L



2346 LOMBARD STREET



FEATURES

- +/- 510 SF Retail
- +/- 1,100 SF Office
- 2019 Development
- Delivery condition negotiable
- Close proximity to the best Union & Chestnut Street blocks
- Public transportation & monthly parking nearby

98 WALK SCORE

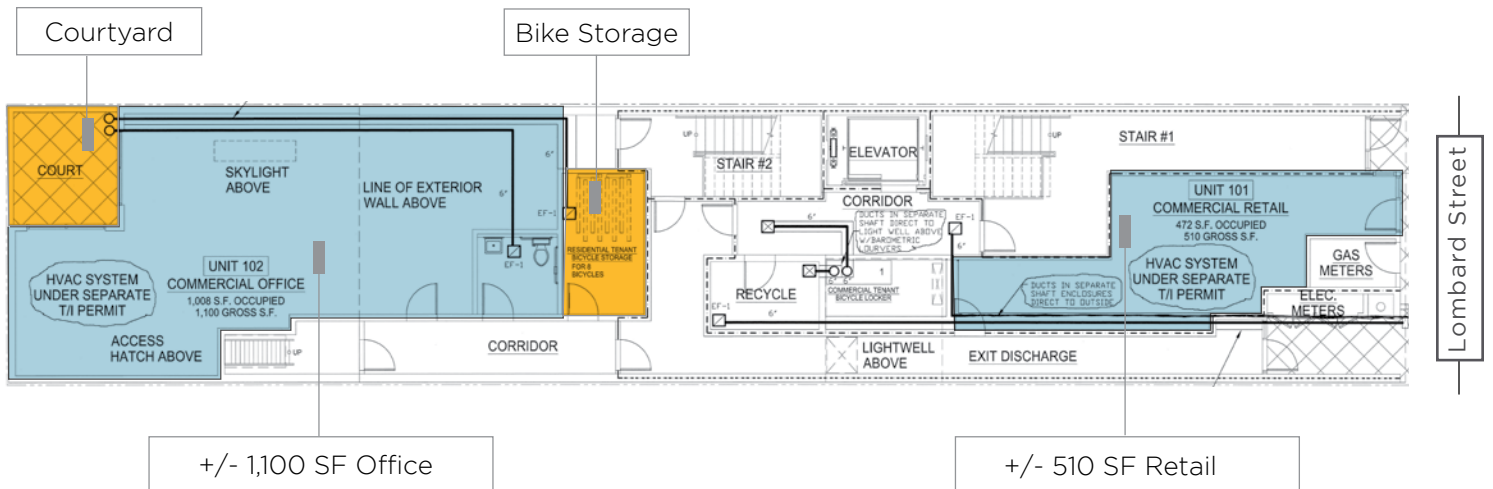
2346 Lombard Street has a Walk Score of 98 out of 100. This location is a Walker's Paradise daily errands do not require a car.

This location is in the Marina District neighborhood in San Francisco. Nearby parks include Funston Playground, Presidio and Moscone Recreation Center.

EXCELLENT TRANSIT

2346 Lombard Street has excellent transit which means transit is convenient for most trips. Bus stops 28, 43, 91 are steps away. Also bus lines 30 and 30x are a few yards away.

GROUND LEVEL FLOOR PLAN



2346 LOMBARD NEIGHBORHOOD



Crissy Field

Yacht Harbor

Palace of Fine Arts

Presidio



Crunch Fitness

A16

Lucky Brand

Marina Supermarket

Bus: 30, 30X

Chestnut Street Coffee Roastery

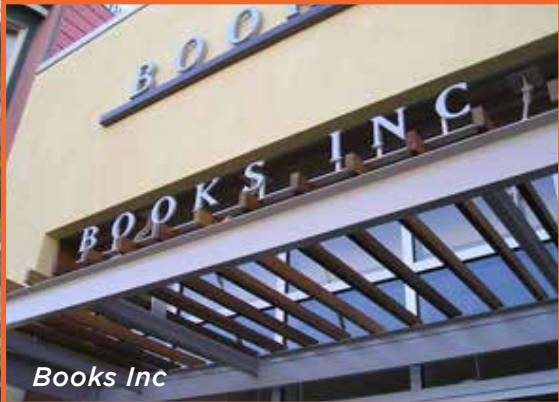
Bus: 28, 43, 91

Original Buffalo Wings

C C's Cocktail Lounge

Broderick Street

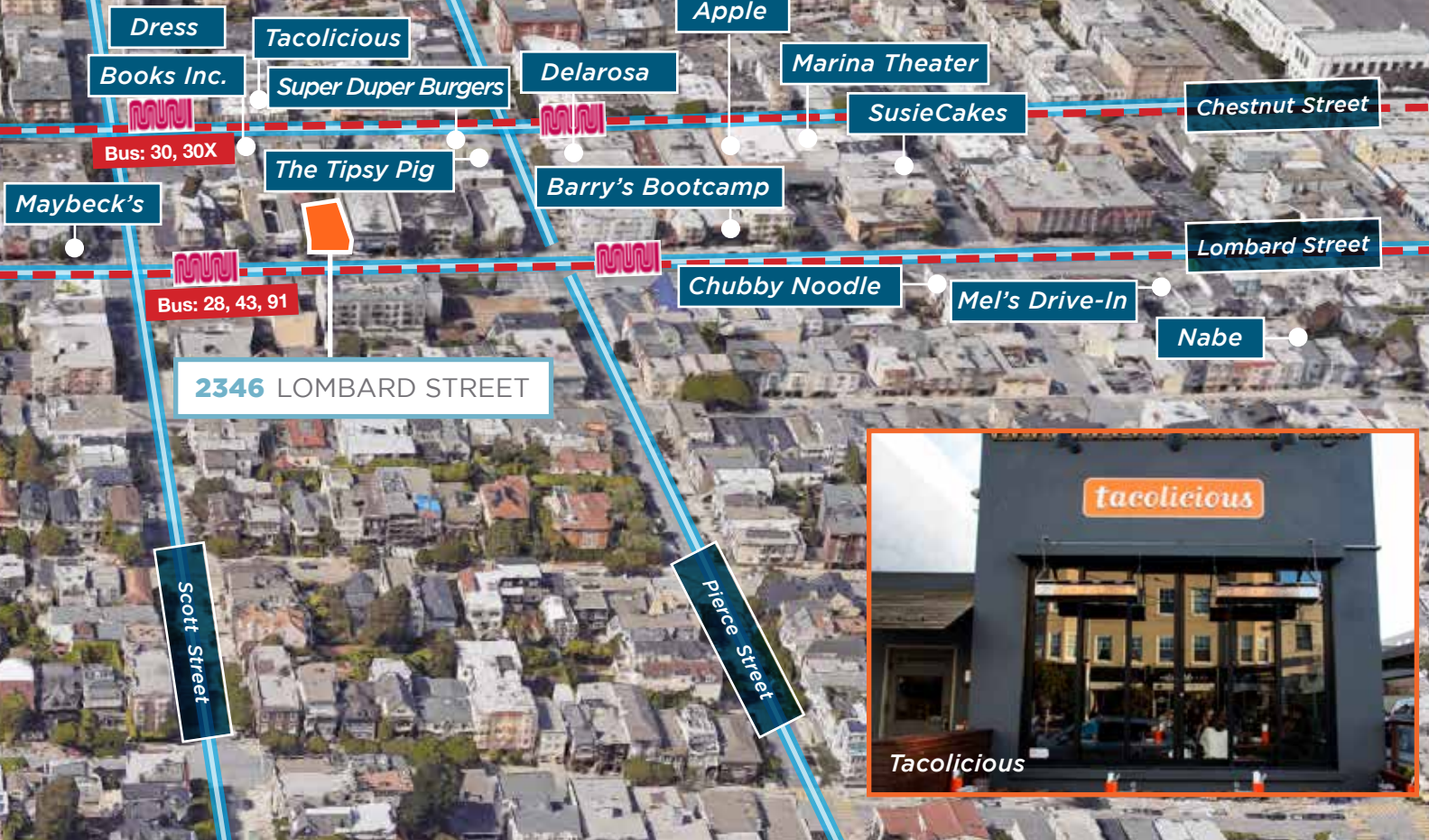
Divisadero Street



Marina Green

Fort Mason

2346 LOMBARD is less than two miles away from the Presidio, and a mile away from Ghirardelli Square and close proximity to the best Union & Chestnut Street blocks.



2346 LOMBARD STREET

S A N F R A N C I S C O

maven
RETAIL • OFFICE • INDUSTRIAL

SANTINO DEROSE

office 415.404.7337
sd@mavenproperties.com
BRE #01338326

DOMINIC MORBIDELLI

office 415.404.7314
dom@mavenproperties.com
BRE # 02024348

NOTICE: This information has been secured from sources we believe to be reliable but we make no representations, warranties, express or implied, as to the accuracy of the information. Listing broker has been given enough information to provide only a preliminary interest in the property. The materials are not to be considered fact. The information contained herein is not a substitute for thorough due diligence investigation. References to square footage, zoning, use, or age are approximate. Please contact the San Francisco Planning Department to verify zoning at (415) 558-6378, as neither broker or landlord represent that this space is suitable for your use. Tenant or Buyer must verify the information at their own expense and bears all the risk for any inaccuracies. By receiving these materials you are agreeing to the disclaimers set forth herein. BRE#01878802